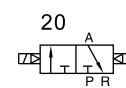
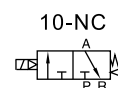
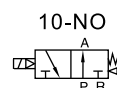


3V300 Series



Ordering code

3V 3 10 10 NO A □ T

1 2 3 4 5 6 7 8

① Model

3V: Solenoid valve
(3/2 way)

② Code

3: 300 Series

③ Valve type

10: Single solenoid
20: Double solenoid

④ Port size

08: 1/4"
10: 3/8"

⑤ Acting type

NC: Normally closed
NO: Normally opened

⑥ Standard voltage

A: AC220V
B: DC24V
C: AC110V
E: AC24V
F: DC12V

⑦ Electrical entry

Blank: Terminal
I: Grommet

⑧ Thread type

T: NPT

Please refer to 43 for manifold specification and the order way.

Specification

Model	3V310-08	3V320-08	3V310-10	3V320-10
Fluid	Air(to be filtered by 40 μ m filter element)			
Acting	Internal pilot			
Port size [Note1]	In=Out=1/4"		In=Out=3/8"	
Orifice size	25.0mm ² (Cv=1.39)		30.0mm ² (Cv=1.67)	
Valve type	3 port 2 position			
Lubrication [Note2]	Not required			
Operating pressure	21~114psi(0.15~0.8MPa)			
Proof pressure	175psi(1.2MPa)			
Temperature	-20~70℃			
Material of body	Aluminum alloy			

[Note 1] NPT thread is available.

[Note 2] Once lubricated air is used, continue with same medium to optimise valve life span.
Lubricants like ISO VG32 or equivalent are recommended.

Product feature

1. Structure in sliding column mode: good tightness and sensitive reaction.
2. Double control solenoid valves have memory function.
3. Internal hole adopts special processing technology which has little attrition friction, low start pressure and long service life.
4. No need to add oil for lubrication.
5. Affiliated manual devices are equipped to facilitate installation and debugging.
6. Several standard voltage grades are optional.
7. Integrate with the manifold to save installation space.

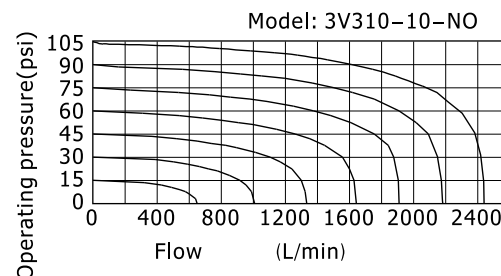
3V300 Series

Coil specification

Item	Specification				
Standard voltage	AC220V	AC110V	AC24V	DC24V	DC12V
Scope of voltage	AC: $\pm 15\%$		DC: $\pm 10\%$		
Power consumption	4.5VA	4.5VA	5.0VA	3.0W	3.0W
Protection	IP65(DIN40050)				
Temperature classification	B Class				
Electrical entry	Terminal, Grommet				
Activating time	0.05 sec and below				
Max. frequency [Note 1]	5 cycle/sec				

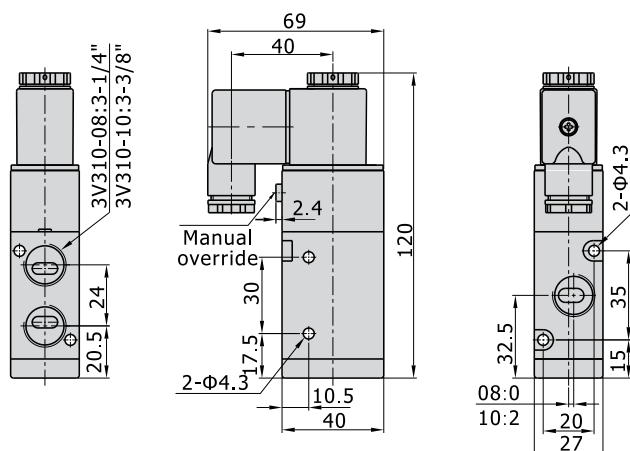
[Note1] The maximum actuation frequency is in the no-load state.

Flow chart



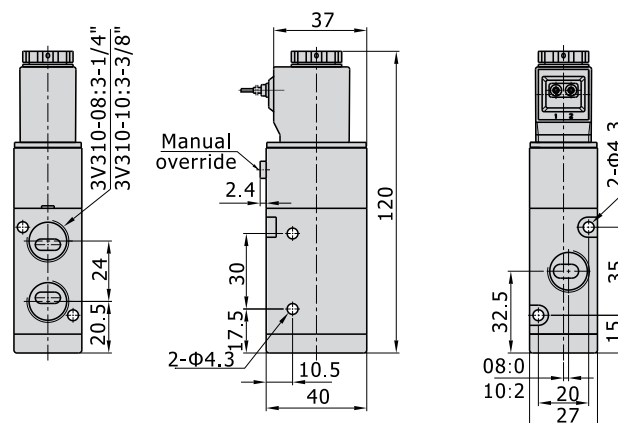
Dimensions

3V310(Terminal)

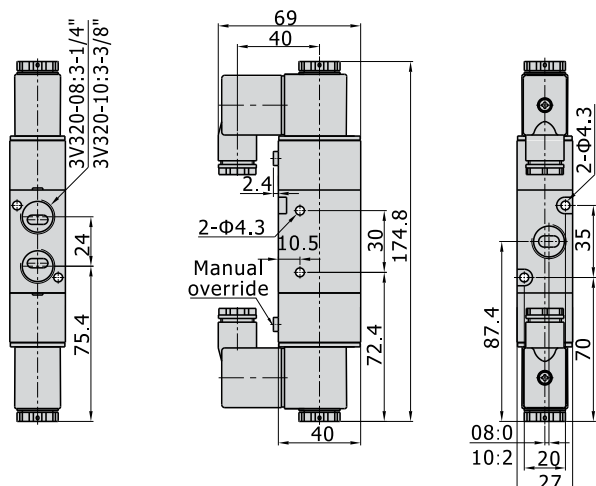


3V310(Grommet)

[Unit: mm]



3V320(Terminal)



3V320(Grommet)

