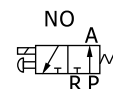
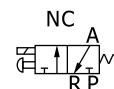


3V3 Series



Ordering code

3V 3 08 NC A □ T

① ② ③ ④ ⑤ ⑥ ⑦

① Model

3V: Solenoid valve
(3/2 way)

② Code

3: 3 Series

③ Port size

08: 1/4"

④ Acting type

NC: Normally closed
NO: Normally opened

⑤ Standard voltage

A: AC220V
B: DC24V
C: AC110V
E: AC24V
F: DC12V

⑥ Electrical entry

Blank: Terminal
I: Grommet

⑦ Thread type

T: NPT

Specification

Model		3V308
Fluid		Air(to be filtered by 40 μ m filter element)
Acting		Direct acting
Port size [Note1]		1/4"
Valve type		3 port 2 position
Orifice size		11mm ² (Cv=0.62)
Lubrication		Not required
Operating pressure	Common	0~114psi(0~0.8MPa)
	vacuum	-1.45~14.2psi(-102.2kPa~0.1MPa)
Proof pressure		175psi(1.2MPa)
Temperature		-20~70℃
Material of body		Aluminum alloy

[Note1] NPT thread is available.

Coil specification

Item	specification
Standard voltage	AC220V、AC110V、AC24V、DC24V、DC12V
Scope of voltage	AC: ±15% DC: ±10%
Power consumption	AC: 10VA DC: 6.5W
Protection	IP65(DIN40050)
Temperature classification	B Class
Electrical entry	Terminal, Grommet
Activating time	0.05 sec and below
Max. frequency [Note1]	10 cycle/sec

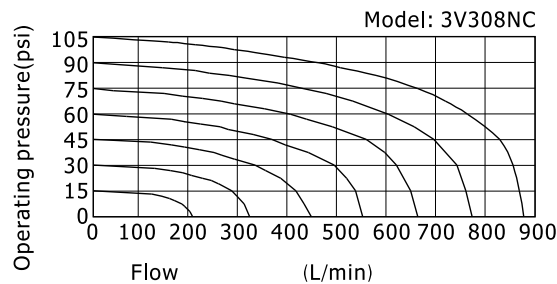
[Note1] The maximum actuation frequency is in the no-load state.

3V3 Series

Product feature

1. Direct acting type and normally closed mode, flexible in direction change.
2. Normally closed and normally open types are optional.
3. Structure in coaxial blanking mode: leakage proof and large air flow.
4. No need to add oil for lubrication.
5. Affiliated manual devices are equipped to facilitate installation and debugging.
6. Several standard voltage grades are optional.
7. Can be used under vacuum condition.

Flow chart

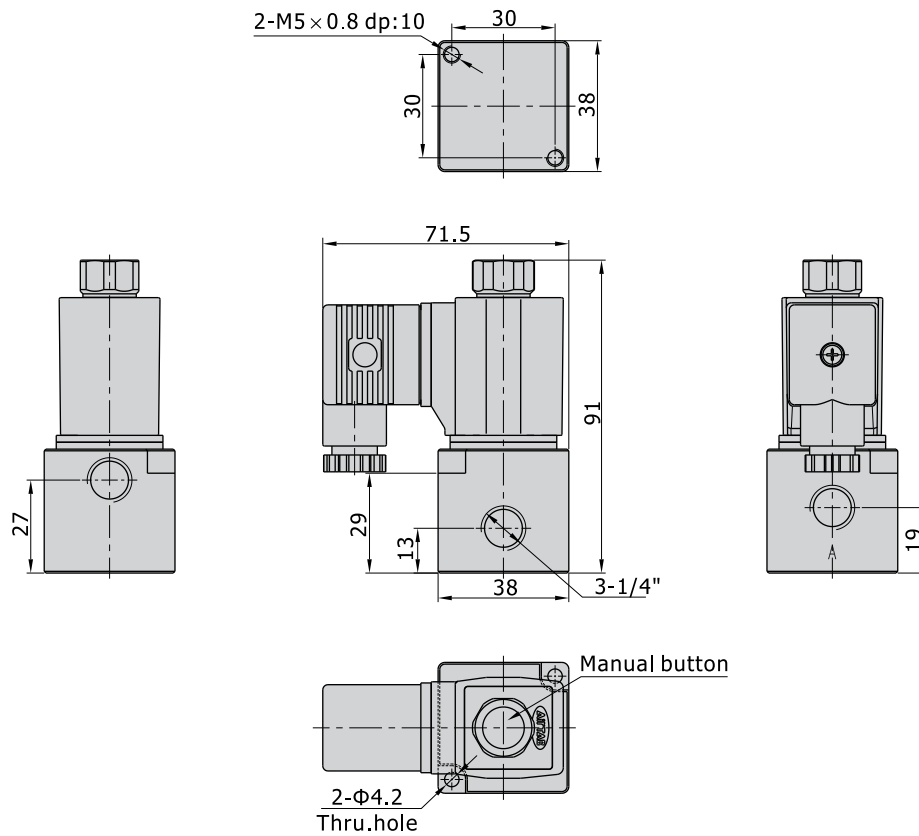


3V3 Series

Dimensions

Terminal

[Unit: mm]



Grommet

