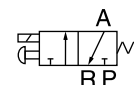


3V1 Series



Ordering code

3V 1 06 A □ T

① ② ③ ④ ⑤ ⑥

① Model

3V: Solenoid valve
(3/2 way)

② Code

1: 1 Series

③ Port size

M5: M5
06: 1/8"

④ Standard voltage

A: AC220V
B: DC24V
C: AC110V
E: AC24V
F: DC12V

⑤ Electrical entry

Blank: Terminal
I: Grommet

⑥ Thread type

T: NPT

Specification

| Model | 3V1-M5 | 3V1-06 |
|--------------------|--|--------|
| Fluid | Air(to be filtered by 40 μ m filter element) | |
| Acting | Direct acting | |
| Port size [Note1] | M5 | 1/8" |
| Valve type | 3 port 2 position | |
| Lubrication | Not required | |
| Operating pressure | 0~114psi(0~0.8MPa) | |
| Proof pressure | 175psi(1.2MPa) | |
| Temperature | -20~70℃ | |
| Orifice size | Φ1.2mm | |
| Material of body | Aluminum alloy | |

[Note1] NPT thread is available.

Product feature

1. Direct acting type and normally closed mode, flexible in direction change.
2. No need to add oil for lubrication.
3. Several valves can be installed integrately to save installation space.
4. Affiliated manual devices are equipped to facilitate installation and debugging.
5. Several standard voltage grades are optional.

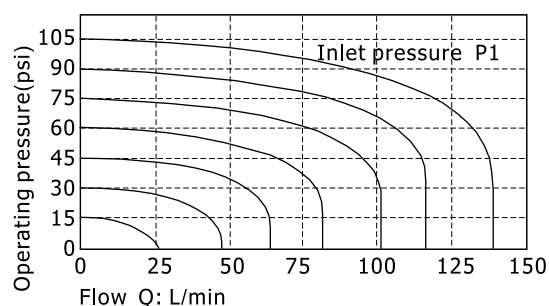
3V1 Series

Coil specification

| Item | Specification | | | | |
|----------------------------|--------------------|--------|----------------|-------|-------|
| Standard voltage | AC220V | AC110V | AC24V | DC24V | DC12V |
| Scope of voltage | AC: $\pm 15\%$ | | DC: $\pm 10\%$ | | |
| Power consumption | 4.5VA | 4.5VA | 5.0VA | 3.0W | 3.0W |
| Protection | IP65(DIN40050) | | | | |
| Temperature classification | B Class | | | | |
| Electrical entry | Terminal, Grommet | | | | |
| Activating time | 0.05 sec and below | | | | |
| Max. frequency [Note 1] | 10 cycle/sec | | | | |

[Note1] The maximum actuation frequency is in the no-load state.

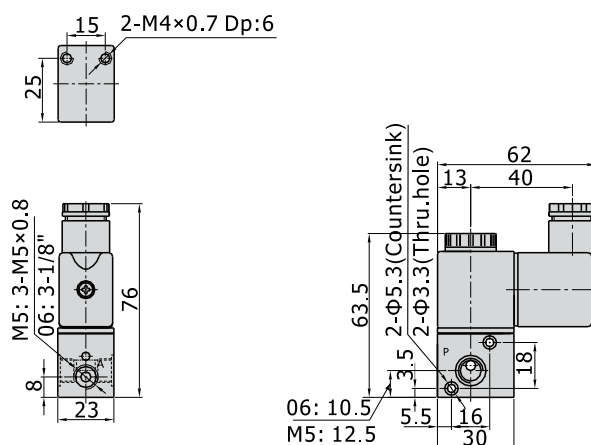
Flow chart



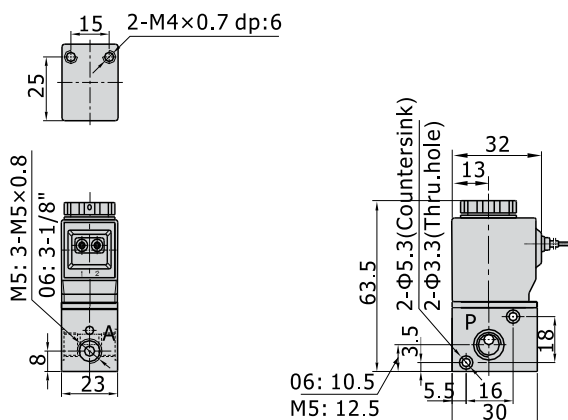
Dimensions

Terminal

[Unit: mm]



Grommet



3V1 Series

Ordering code for series

3V 1 06 A □ 3F T

① ② ③ ④ ⑤ ⑥ ⑦

① Model

3V: Solenoid valve
(3/2 way)

② Code

1: 1 Series

③ Port size

M5: M5
06: 1/8"

④ Standard voltage

A: AC220V
B: DC24V
C: AC110V
E: AC24V
F: DC12V

⑤ Electrical entry

Blank: Terminal
I: Grommet

⑦ Thread type

T: NPT

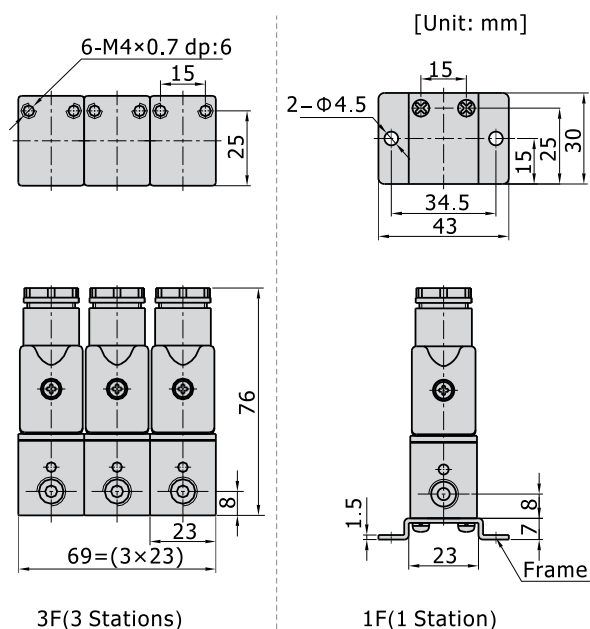
□ Number of stations

1F: 1 Station
2F: 2 Stations
3F: 3 Stations
.....
20F: 20 Stations

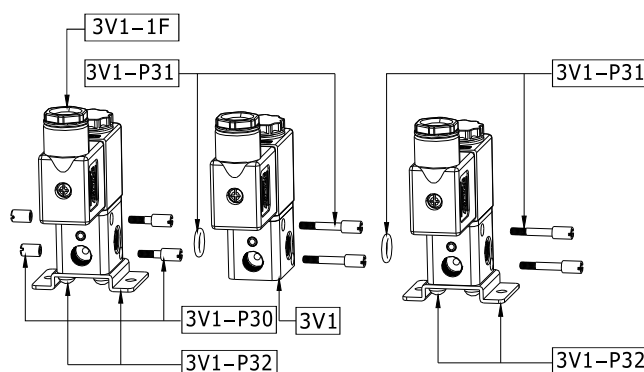
The above codes have included the series accessories,
so it is unnecessary to order the accessories specially. But if you like, you could order as follows.

| Code of accessories | Accessory name | Part code | Part name | Quantity |
|---------------------|-------------------------|-------------|------------------------|----------|
| 3V1-P30 | Coupling screw assembly | F-3V1002B | Coupling screw(S) | 2 |
| | | F-3V1003B | Coupling screw(M) | 2 |
| 3V1-P31 | Coupling screw assembly | GOR20008N75 | O-Ring | 1 |
| | | F-3V1004B | Coupling screw(L) | 2 |
| 3V1-P32 | Bracket assembly | F-3V1001B | Fixed mounting | 1 |
| | | GSDA04008ZA | Cross round head screw | 2 |

Dimensions of series



How to joint



Product structure

| Connection Amount\Q.TY | 3V1 | 3V1-P30 | 3V1-P31 | 3V1-P32 |
|------------------------|----------|---------|-------------|---------|
| 3V1-□-□-1F | 1 | 0 | 0 | 1 |
| 3V1-□-□-2F | 2 | 1 | 1 | 1 |
| | | | | |
| 3V1-□-□- <i>n</i> F | <i>n</i> | 1 | <i>n</i> -1 | 2 |

Note: "n" is the number of junction valve, and $n \geq 3$.