

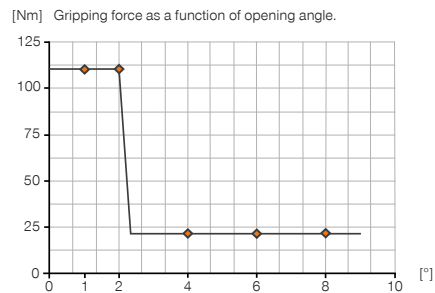
CUTTING TONGS

INSTALLATION SIZE ZK33

▶ PRODUCT SPECIFICATIONS



▶ Gripping moment diagram



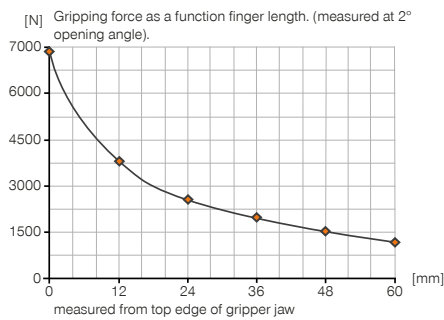
▶ Forces and moments

Displays static forces and moments that can also have an effect, besides the gripping force.



Mr [Nm]	26
My [Nm]	40
Fa [N]	720

▶ Gripping force diagram



▶ RECOMMENDED ACCESSORIES



GRIPPING COMPONENTS



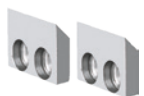
UB22
Universal jaw set steel



BK22
Cutter mounting set



BK22-1
Cutter set with double ground cutting edge



BK22-2
Cutter set with single ground cutting edge



BK22-3
Cutter set with shearing blades



ENERGY SUPPLY



GVM5
Straight Fittings - Quick Connect Style



WVM5
Angled Fittings - Quick Connect Style



SENSORS



KB3
Mounting block

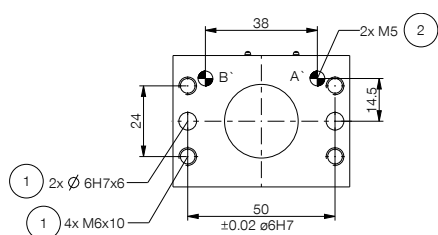


NJ3-E2
Inductive proximity switch - Cable 5 m

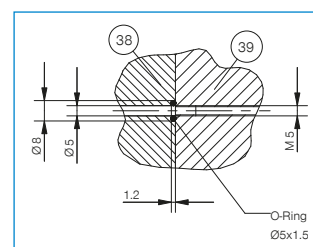


NJ3-E2SK
Inductive Proximity Switch Cable 0,3 m - Connector M8

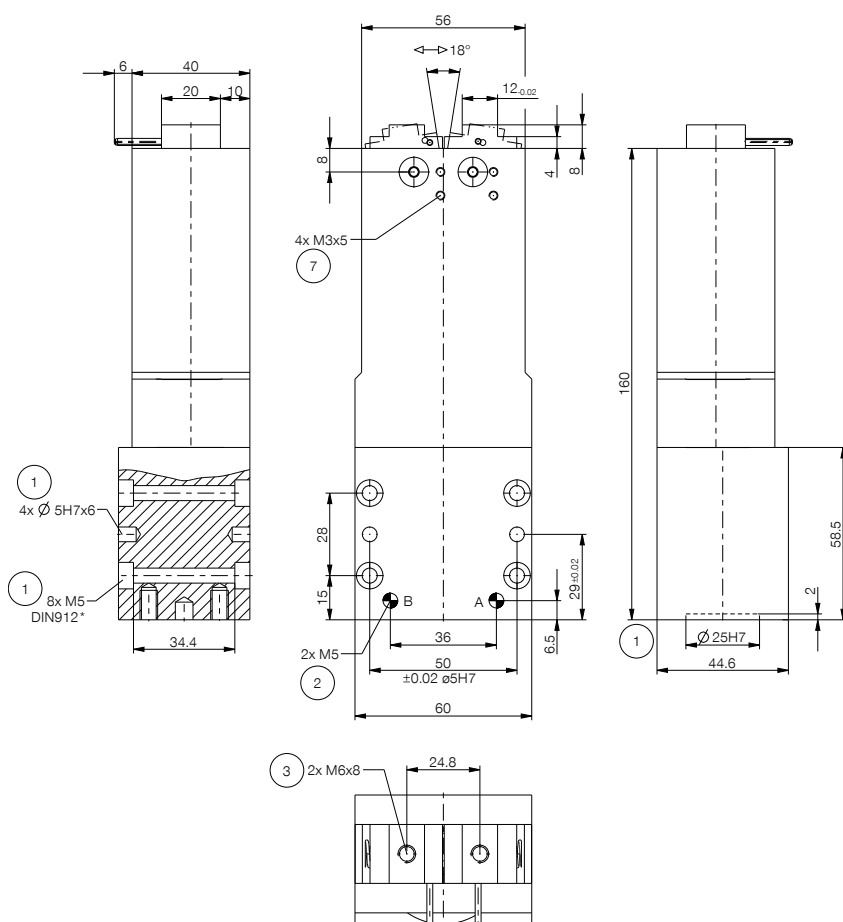
Order no.	Technical data
	ZK33
Stroke per jaw [°]	9
Gripping moment in closing [Nm]	110
Gripping force in closing [N]	6800
Closing time [s]	0.2
Opening time [s]	0.2
Repetition accuracy +/- [mm]	0.1
Operating pressure min. [bar]	3
Operating pressure max. [bar]	8
Nominal operating pressure [bar]	6
Operating temperature min. [°C]	5
Operating temperature max. [°C]	+80
Air volume per cycle [cm³]	73
Weight [kg]	1.3



- ① Gripper attachment
- ② Energy supply
- ③ Cutting insert mounting
- ⑦ Fixing for mounting block
- ③⑧ Adapter
- ③⑨ Gripper
- Ⓐ Air connection (close)
- Ⓑ Air connection (open)
- Ⓐ Air connection, alternative (close)
- Ⓑ Air connection, alternative (open)



Hoseless air feed-through



CUTTING TONGS




SERIES ZK

▶ PRODUCT ADVANTAGES



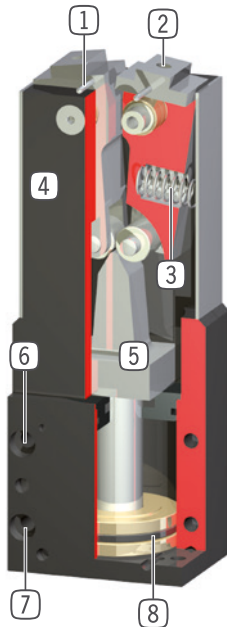
- ▶ **Flat structure**
Reduces the interference contours and enables simple integration into your machine design
- ▶ **Decide for yourself!**
The gripper jaw holder provides the option to adapt standard cutting, gripper jaws or your own design
- ▶ **Failure-free continuous operation**
Our uncompromising “Made in Germany” quality guarantees up to 5 million maintenance-free gripping cycles

▶ SERIES CHARACTERISTICS

Installation size		
ZKXX		
<div>  <div>5 million maintenance-free cycles (max.)</div> </div>		●
<div>  <div>Inductive sensor</div> </div>		●
<div>  <div>IP40</div> </div>		●



► BENEFITS IN DETAIL



- ① **Switch cam**
 - for position sensing
- ② **Mounting**
 - for individual jaws, knives, chucks and similar
- ③ **Integrated spring**
 - supports jaw return (ZK33)
- ④ **Robust, lightweight housing**
 - Hard-coated aluminum alloy
- ⑤ **Force transfer**
 - via wedge and rollers
- ⑥ **Mounting and positioning**
 - mounting possible from several sides for versatile positioning
- ⑦ **Energy supply**
 - possible from several sides
- ⑧ **Drive**
 - double-acting pneumatic cylinder

► TECHNICAL DATA

Installation size	Stroke	Gripping moment	Weight	IP class
	[°]	[Nm]	[kg]	
ZK22	7.5	54	0.79	IP40
ZK33	9	110	1.3	IP40

► FURTHER INFORMATION IS AVAILABLE ONLINE



All information just a click away at: www.zimmer-group.com. Find data, illustrations, 3D models and operating instructions for your installation size using the order number for your desired product. Quick, clear and always up-to-date.