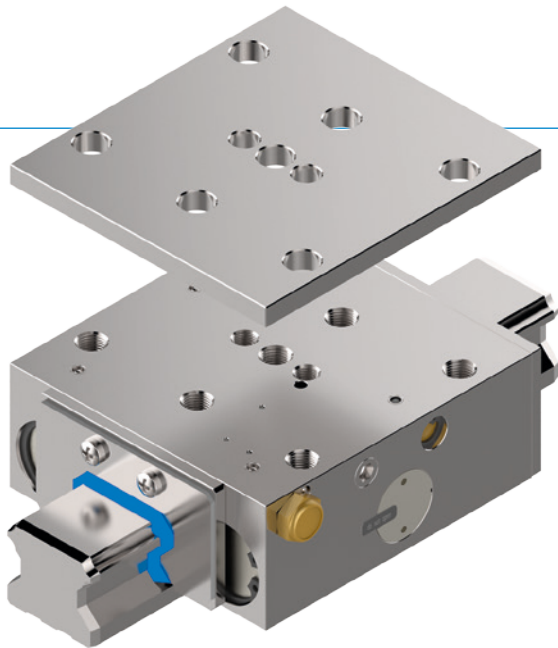


CLAMPING AND BRAKING ELEMENTS | PNEUMATIC SERIES UBPS

► PRODUCT ADVANTAGES



- **broad range of products**
For all common profile rail guides
- **Energize to open (NC)**
through spring-loaded energy storage
- **high durability**
Up to 5 million static clamping cycles
- **Higher holding force**
Via activation with PLUS air
- **Safety element**
Safe braking in case of energy failure

► THE BEST PRODUCT FOR YOUR APPLICATION

APPLICATION SCENARIOS

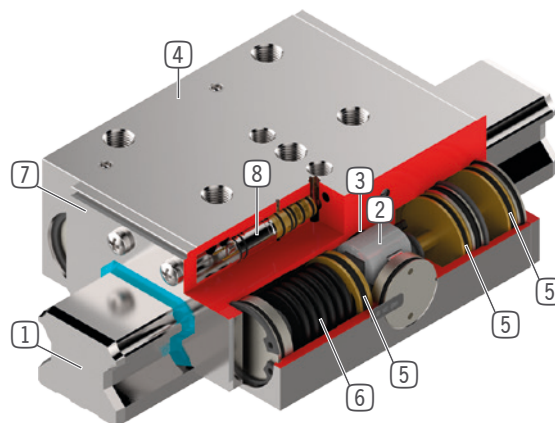
- **Emergency OFF function**
- **Z-axes positioning in neutral position**
- **Machine table clamping of work centre**

FURTHER INFORMATION

- **Spacer plate**
In addition, a spacer plate might have to be ordered as height compensation, depending on the height of the rail carriage (dimension D).
- **Special variants on request, e.g.**
 - With proximity switch monitoring
 - With low opening pressure (3.0 bar or 4.0 bar)
 - With additional air connection (from above, from the front)
 - Integrated valve for reduced closing time

► BENEFITS IN DETAIL

- ① **Profile rail guide**
 - Available for all common profile rail guides
- ② **Wedge-type gear**
 - Power transmission between the pistons and clamping jaws and brake shoes
- ③ **Clamping jaws and brake shoes**
 - Pressed at the free surfaces of the profile rail guide
- ④ **Housing**
 - chemically nickel plated steel
- ⑤ **Pneumatic piston**
 - The piston moves the wedge-type gear longitudinally
- ⑥ **Spring-loaded energy storage**
 - For non-pressurized closing of the clamping unit
- ⑦ **Scraper**
 - Can also be ordered as an option
- ⑧ **Integrated valve (optional)**
 - Up to 60% faster closing time
 - regardless of the cable length



► INFORMATION ON THE SERIES

TECHNICAL DATA

Rail size	20-65 mm
Holding force	1500-7700 (9200) N
Pressure min. / max.	5.5 / 6.5
Spring storage	existing
PLUS connection	Yes
Static clamping cycles (B10d value)	up to 5 million
Dynamic braking cycles	up to 2000
Operation	pneumatic
Operating temperature	-10 ... +70 [°C]



► Technical Information

All information just a click away at: www.zimmer-group.de

Find data, illustrations, 3D models and operating instructions for your installation size using the order number for your desired model.

Quick, clear and always up-to-date.

► Selection guide for clamping and braking elements

Whatever the possible application – here, you'll find the right product.

Easy selection of the right element for any rail-carriage combination: www.zimmer-group.de/de/plr.