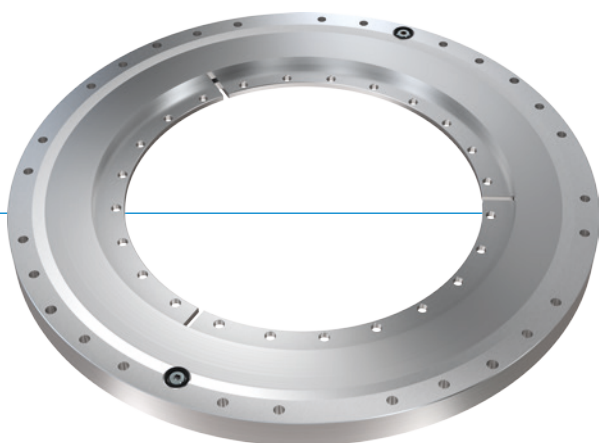


CLAMPING ELEMENTS | HYDRAULIC

SERIES DKHS1000

► PRODUCT ADVANTAGES



► Highest accuracy in rotational axis

No moving functional parts and therefore backlash-free
Drive can be taken out of the drive control

► Fastest reaction time and pressureless safety function

Due to a low displacement volume and internal stress of the housing

► Market leading cycles

Housing strain stays below the elastic fatigue limit

► THE BEST PRODUCT FOR YOUR APPLICATION

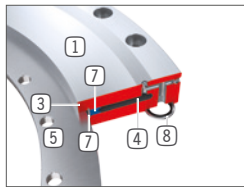
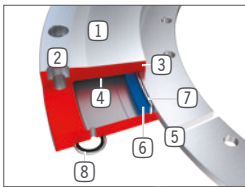
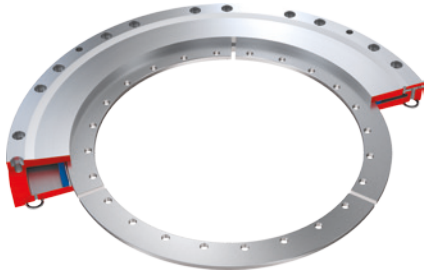
APPLICATION SCENARIOS

- Torque take-up of shafts
- Clamping of torque drive
- Clamping of C-axis
- Fixing and safeguarding of swivel bridge
- Clamping of spindle tilting axis

TECHNICAL DATA

Shaft diameter	200-340 mm
Holding torque	1600-4200 Nm
Pressure min. / max.	100 / 110
Spring storage	existing
PLUS connection	No
Static clamping cycles (B10d value)	up to 5 million
Dynamic braking cycles	not suitable
Operation	hydraulic
Operating temperature	5 ... +80 [°C]

► BENEFITS IN DETAIL



- ① **Housing**
 - Holding torque due to pre-stressed, high tensile tool steel
- ② **Housing connection**
 - Screw connection to the connecting construction
- ③ **Clamping area**
 - Backlash-free Clamping of the rotary axis
- ④ **Pressure chamber**
 - Opens the element under pressure in the elastic range
- ⑤ **Shaft connection**
 - Connection with the rotary axis
- ⑥ **Sealing**
 - Prestressed and self-enforcing under pressure
- ⑦ **Retain plate**
 - Secures and holds the sealing in position
- ⑧ **Hydraulic connection**
 - Sealing through O-Ring and surrounding cutting ring

► TECHNICAL DATA

► SERIES DKHS1000 HYDRAULIC CLAMPING NC (NORMALLY CLOSED) CLOSED WITHOUT PRESSURE

	Order no.	Shaft Ø	Holding torque	B	ØD1	ØLK1	ØLK2
		[mm]	[Nm]	[mm]	[mm]	[mm]	[mm]
	DKHS1200-00-A	200	1600	20	328	310	189
	DKHS1260-00-A	260	2600	22	388	370	249
	DKHS1340-00-A	340	4200	22	468	450	329