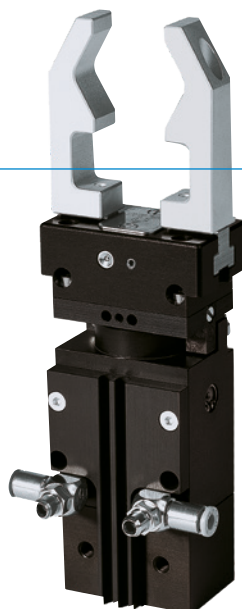


# 2-JAW PARALLEL ROTARY GRIPPERS

## SERIES DGP400

### ► PRODUCT ADVANTAGES



#### “TWO in ONE”

##### ► Proven T slot guide

This established and proven guiding technology stands for the highest process reliability like no other





##### ► 2 in 1

Gripping and swivelling in a module allows optimum utilisation of the installation space

##### ► Individually adjustable

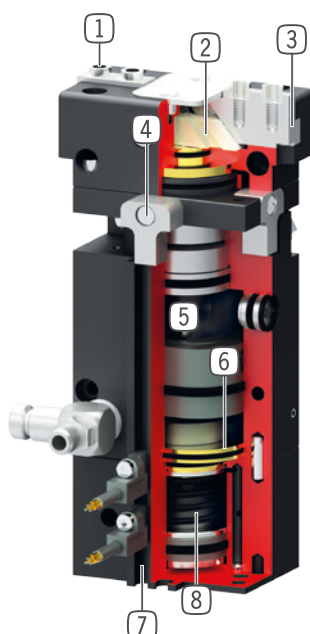
How you stay flexible: 90° or 180° swivel angle - You decide what your application requires on site

### ► SERIES CHARACTERISTICS

Installation size		Version		
DGP40X		N	NC	NO
 1.5 Mio	1.5 million maintenance-free cycles (max.)	•	•	•
	Spring closing C		•	
	Spring opening O			•
	IP40	•	•	•



## ► BENEFITS IN DETAIL



- ① **Removable centering sleeves**
  - quick and economical positioning of the gripper fingers
- ② **Wedge hook mechanism**
  - synchronized the movement of the gripper jaws
- ③ **Precise T-Slot guide**
  - high forces and moments capacity
- ④ **Endposition 0°/90°/180° adjustment**
  - endstops for 0°/90°/180° included with purchase
- ⑤ **Rotating-drive mechanism**
  - robust, wear-resistant
- ⑥ **Drive**
  - two double-acting pneumatic cylinders
- ⑦ **Slot for magnetic field sensor**
  - sensing of the rotational position and gripper jaw position
- ⑧ **Integrated gripping force safety device**
  - optional via integrated spring (C or O models)

## ► TECHNICAL DATA

Installation size	Stroke per jaw [mm]	Gripping force [N]	Weight [kg]	IP class
DGP404	4	115 - 155	0,44 - 0,48	IP40

## ► FURTHER INFORMATION IS AVAILABLE ONLINE



All information just a click away at: [www.zimmer-group.com](http://www.zimmer-group.com). Find data, illustrations, 3D models and operating instructions for your installation size using the order number for your desired product. Quick, clear and always up-to-date.

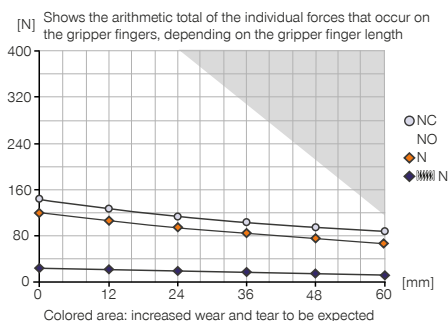
# 2-JAW PARALLEL ROTARY GRIPPERS

## INSTALLATION SIZE DGP404

### PRODUCT SPECIFICATIONS

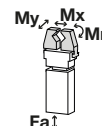


#### Gripping force diagram



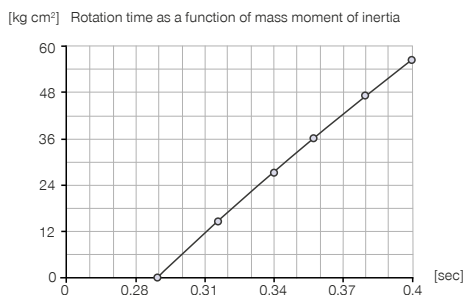
#### Forces and moments

Displays static forces and moments that can also have an effect, besides the gripping force.



Mr [Nm]	8
Mx [Nm]	15
My [Nm]	10
Fa [N]	300

#### Rotation time diagram



### INCLUDED IN DELIVERY



2 [piece]  
Flow Control Valves - with Swivel joint  
**DRVM5X4**



4 [piece]  
Centering Disc  
**DST40400**



1 [piece]  
Stop 90° + 180°  
**ANS0065**

### RECOMMENDED ACCESSORIES



#### ENERGY SUPPLY



**GVM5**  
Straight Fittings - Quick Connect Style



#### SENSORS



**MFS01-S-KHC-P1-PNP**  
Magnetic field sensor angled, cable 0.3 m - M8 connector



#### SENSORS



**MFS01-K-KHC-P1-PNP**  
Magnetic field sensor angled, cable 5 m



**MFS02-K-KHC-P1-PNP**  
Magnetic field sensor straight, cable 5 m



**MFS02-S-KHC-P1-PNP**  
Magnetic field sensor straight, cable 0.3 m - M8 connector

