

AASHTOWare Project Data Analytics™



AASHTOWare Project Data Analytics puts your agency in the driver's seat to make well-informed, data-driven decisions. Tailored specifically to the highway construction industry, this module is built to maximize the potential of the AASHTOWare Project unified database. Analyze data, find patterns, and draw key conclusions throughout the entire construction process.

DATA-DRIVEN DECISION MAKING



Drive Analysis Forward with Agency-Specific Tools

Unlike other generic analysis programs, the Data Analytics module was designed specifically for agency infrastructure construction management. Improve decision making with a toolkit built for analyzing broad sets of current and historical data.

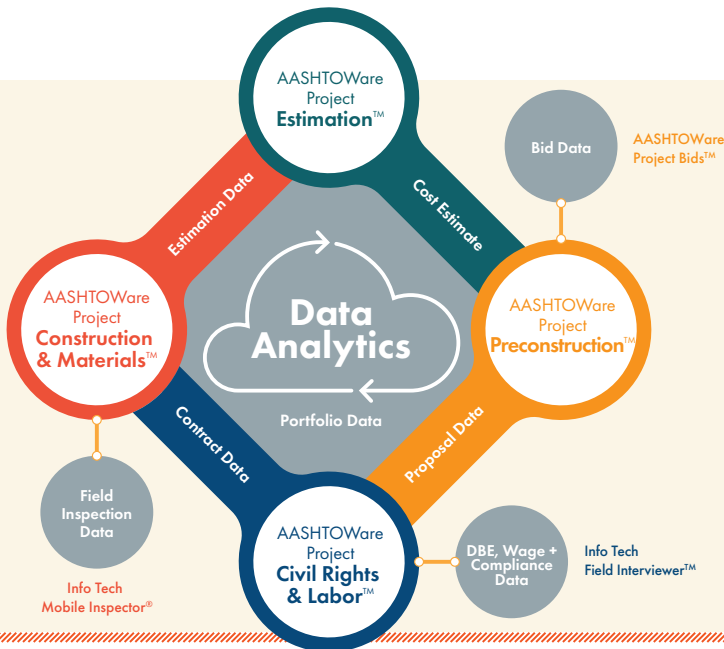
- Quickly analyze vendor bidding patterns for irregularities.
- Drive key performance indicators based on historical analysis.
- Dashboard display of key information to aid in data interpretation.
- Respond rapidly to requests with user-friendly tools.



Enjoy the Benefits of a Software- as-a-Service (SaaS) Platform

Users can perform data analytics in web-based and SaaS environments. The Data Analytics SaaS platform benefits from a number of features that improve efficiency, access, and implementation.

- Minimal user training, minimal IT support, and no agency deployment needed with the SaaS completely supported by Info Tech, Inc., a licensed AASHTOWare contractor.
- Rapid delivery model allows you to stay up-to-date with new features going live every two weeks.
- Accessible from anywhere internet is available and mobile-friendly.
- No additional licensing required for statistical analysis.



Break Down Silos with a User-Driven Unified Database

All AASHTOWare Project modules work seamlessly together in a unified database, promoting collaboration and acting as a single source of truth for your construction portfolio. New features, enhancements, and even modules come at the direction of key user groups.

- Inform regular feature updates and improvements with comprehensive user feedback functionality.
- Use and analyze data from the estimate, letting, bids, construction, materials, civil rights and labor modules.
- Integrated with the rest of AASHTOWare Project software to maximize the unified database.

To learn more about the AASHTOWare Data Analytics module and the unified database, contact AASHTO or the AASHTOWare contractor:

AMERICAN ASSOCIATION OF
STATE HIGHWAY AND
TRANSPORTATION OFFICIALS
AASHTO

444 North Capitol Street
N.W., Suite 249
Washington, DC 20001
(202) 624-5821
kplatte@ashto.org
www.aashtoware.org

infotech

2970 SW 50th Terrace
Gainesville, FL 32608
Phone (352) 381-4400
info@ashtowareproject.org
www.aashtowareproject.org