

dip powder

Common Steps



1. Sanitize hands.
2. **A)** Prep the Nail.
B) Push back the cuticle.
C) Remove shine from the natural nail with a file or drill. (Especially around the cuticle and edges of the nail.)



3. Apply **BOND** to the natural nail.



4. ***For Artificial Nails***
(For natural nails proceed to step 5.)
A) Put nail glue on the artificial nail tip and attach it to the natural nail.

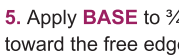


- B)** File or drill where the artificial nail tip meets the natural nail to create even surface.

Color



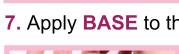
- C)** Apply **BASE** right below where the nail tip meets the natural nails & dip into **NATURAL POWDER**.



5. Apply **BASE** to $\frac{3}{4}$ of the nail toward the free edge.



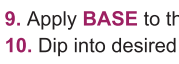
6. Dip into **NATURAL POWDER**.



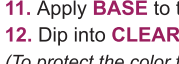
7. Apply **BASE** to the entire nail.



8. Dip into desired color.



9. Apply **BASE** to the entire nail.



10. Dip into desired color.



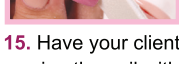
11. Apply **BASE** to the entire nail.



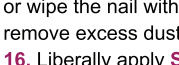
12. Dip into **CLEAR DIP POWDER**. (To protect the color from filing).



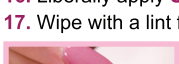
13. Liberally apply **SEAL PROTECT**.



14. File / Shape / Buff



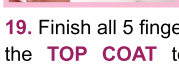
15. Have your client wash their hands or wipe the nail with an alcohol pad to remove excess dust.



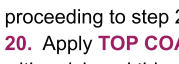
16. Liberally apply **SEAL PROTECT**



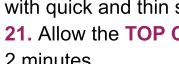
17. Wipe with a lint free cloth.



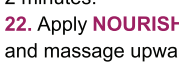
18. Apply **TOP COAT** with quick, thin strokes.



19. Finish all 5 fingers, and allow the **TOP COAT** to air dry before proceeding to step 20.



20. Apply **TOP COAT** again, with quick and thin strokes.



21. Allow the **TOP COAT** to air dry for 2 minutes.



22. Apply **NOURISH OIL** to the cuticle and massage upward.

Pink & White

- C)** Apply **BASE** right below where the nail tip meets the natural nails & dip into desired **PINK POWDER**.



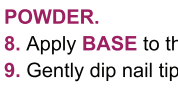
5. Apply **BASE** to $\frac{3}{4}$ of the nail toward the free edge.



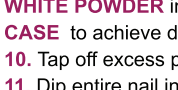
6. Dip into desired **PINK POWDER**.



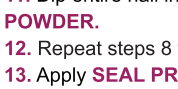
7. Fill the **FRENCH DIP CASE** with **PURE WHITE POWDER**.



8. Apply **BASE** to the entire nail.



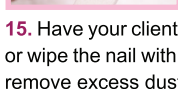
9. Gently dip nail tip into **PURE WHITE POWDER** in the **FRENCH DIP CASE** to achieve desired smile line.



10. Tap off excess powder.



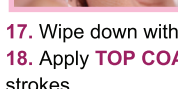
11. Dip entire nail into desired **PINK POWDER**.



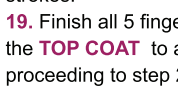
12. Repeat steps 8 to 11.



13. Apply **SEAL PROTECT**.



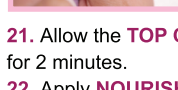
14. File / Shape / Buff



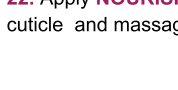
15. Have your client wash their hands or wipe the nail with an alcohol pad to remove excess dust.



16. Liberally apply **SEAL PROTECT**.



17. Wipe down with a lint free cloth.



18. Apply **TOP COAT** with quick, thin strokes.



19. Finish all 5 fingers, and allow the **TOP COAT** to air dry before proceeding to step 20.



20. Apply **TOP COAT** again, with quick & thin strokes.

21. Allow the **TOP COAT** to air dry for 2 minutes.

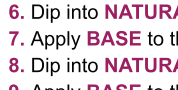
22. Apply **NOURISH OIL** to the cuticle and massage upward.

Gel Polish on Dip Powder

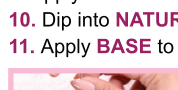
- C)** Apply **BASE** right below where the nail tip meets the natural nails & dip into **NATURAL POWDER**.



5. Apply **BASE** to $\frac{3}{4}$ of the nail toward the free edge.



6. Dip into **NATURAL POWDER**.



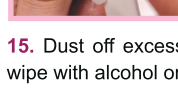
7. Apply **BASE** to the entire nail.



8. Dip into **NATURAL POWDER**.



9. Apply **BASE** to the entire nail.



10. Dip into **NATURAL POWDER**.



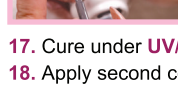
11. Apply **BASE** to the entire nail.



12. Dip into **CLEAR DIP POWDER**.



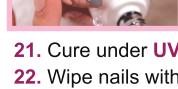
13. Liberally apply **SEAL PROTECT**.



14. File / Shape / Sand to achieve a rough texture.



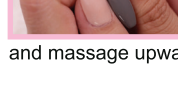
15. Dust off excess powder, do not wipe with alcohol or wash hands.



16. Apply one coat of gel color.



17. Cure under **UV/LED LAMP**.



18. Apply second coat of color.



19. Cure under **UV/LED LAMP**.



20. Apply **TOP COAT**.

21. Cure under **UV/LED LAMP**.

22. Wipe nails with alcohol to remove sticky layer.

23. Apply **NOURISH OIL** to the cuticle and massage upward.

Tips & Tricks



1. **Brush Technique:** Always brush parallel to the nail to ensure the bristles don't poke or indent the powder.



2. **Dip Technique:** Dip at a 45 degree angle and pull straight back out. Do not push the nail against the powder.



3. **Tap Technique:** Tap off excess powder with the finger pointing straight down. This ensures that the powder does not fall back onto the nail.



4. **Second Seal Protect:** After filing, buffing and sanitizing, apply the second layer of seal protect liberally. Ensuring that it soaks into the dip powder well.



5. **Top Coat:** Apply the dip top coat in quick thin strokes and let your first coat air dry before applying second coat.



6. Ensure all of your essentials are cleaned up properly and the caps are tightened well.

Show us Your Creativity #KiaraSky

Follow @KiaraSkyNails



© KIARA SKY NAILS
www.KiaraSky.com

