

# HEALING WORD W/ I LOVE YOU CHORUS

WORDS AND MUSIC BY HOLLAND DAVIS, RICK HARCHOL AND MARK MCCOY

ANDANTE ♩ = 88

INTRO - VIBEY AND COOL

F

F2/E

Dm7

Dm7/A



ESLOW GUITAR?

VOICE



5

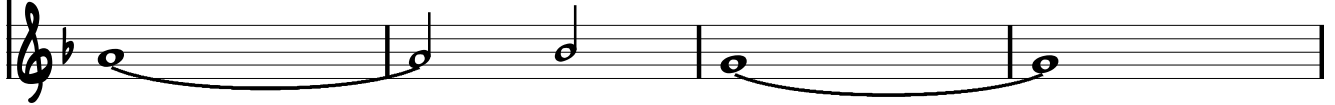
B<sup>b</sup>2

Dm7

Csus



VOICE



VERSE

9

F

F2/E

Dm7

Dm7/A



STAN DING HERE IN YOUR PRE SENCE

13

B<sup>b</sup>2

Dm7

Csus



IN THE STILL - NESS OF YOUR PEACE

17

F

F2/E

Dm7

Dm7/A



AS I AM YOU EM BRACE ME

21  $\flat^2$   $DM^7$   $Csus$

JUST SPEAK THE WORD AND I'LL BE FREE

Detailed description: This block contains the first system of music, measures 21 through 24. It features a single treble clef staff with a key signature of one flat (B-flat) and a 7/4 time signature. The melody begins with a quarter rest, followed by a quarter note G4, a quarter note A4, a quarter note B4, a quarter note C5, a quarter note B4, a quarter note A4, a quarter note G4, and a quarter note F4. The final measure of the system contains a whole rest. Chord symbols  $\flat^2$ ,  $DM^7$ , and  $Csus$  are positioned above the staff. The lyrics "JUST SPEAK THE WORD AND I'LL BE FREE" are written below the notes.

**CHORUS**

25 F  $Csus$   $Gm^7$   $\flat^2$

HEA - LING WORD YOU SPEAK THE HEA - LING WORD

Detailed description: This block contains the second system of music, measures 25 through 28. It features a single treble clef staff with a key signature of one flat and a 7/4 time signature. The melody starts with a quarter rest, followed by a quarter note G4, a quarter note A4, a quarter note B4, a quarter note C5, a quarter note B4, a quarter note A4, a quarter note G4, and a quarter note F4. The final measure of the system contains a whole rest. Chord symbols F,  $Csus$ ,  $Gm^7$ , and  $\flat^2$  are positioned above the staff. The lyrics "HEA - LING WORD YOU SPEAK THE HEA - LING WORD" are written below the notes.

VOICE

HEA - LING WORD

Detailed description: This block contains the voice part for measures 25 through 28. It features a single treble clef staff with a key signature of one flat. The vocal line is mostly silent, with a whole rest in the first measure. In the second measure, it begins with a quarter note G4, a quarter note A4, a quarter note B4, and a quarter note C5, all connected by a slur. The lyrics "HEA - LING WORD" are written below the notes.

29 F  $Csus$   $Gm^7$   $\flat^2$

YOUR HEA - LING WORD SETS ME FREE

Detailed description: This block contains the third system of music, measures 29 through 32. It features a single treble clef staff with a key signature of one flat and a 7/4 time signature. The melody starts with a quarter rest, followed by a quarter note G4, a quarter note A4, a quarter note B4, a quarter note C5, a quarter note B4, a quarter note A4, a quarter note G4, and a quarter note F4. The final measure of the system contains a whole rest. Chord symbols F,  $Csus$ ,  $Gm^7$ , and  $\flat^2$  are positioned above the staff. The lyrics "YOUR HEA - LING WORD SETS ME FREE" are written below the notes.

VOICE

VOICE

Detailed description: This block contains the voice part for measures 29 through 32. It features a single treble clef staff with a key signature of one flat. The vocal line is mostly silent, with whole rests in all four measures. The word "VOICE" is written to the left of the staff.

33 F  $Csus$   $Gm^7$   $\flat^2$

HEA - LING WORD YOU SPEAK THE HEA - LING WORD

Detailed description: This block contains the fourth system of music, measures 33 through 36. It features a single treble clef staff with a key signature of one flat and a 7/4 time signature. The melody starts with a quarter rest, followed by a quarter note G4, a quarter note A4, a quarter note B4, a quarter note C5, a quarter note B4, a quarter note A4, a quarter note G4, and a quarter note F4. The final measure of the system contains a whole rest. Chord symbols F,  $Csus$ ,  $Gm^7$ , and  $\flat^2$  are positioned above the staff. The lyrics "HEA - LING WORD YOU SPEAK THE HEA - LING WORD" are written below the notes.

VOICE

HEA - LING WORD

Detailed description: This block contains the voice part for measures 33 through 36. It features a single treble clef staff with a key signature of one flat. The vocal line is mostly silent, with a whole rest in the first measure. In the second measure, it begins with a quarter note G4, a quarter note A4, a quarter note B4, and a quarter note C5, all connected by a slur. The lyrics "HEA - LING WORD" are written below the notes.

37 F  $Csus$   $Gm^7$   $\flat^2$

YOUR HEA - LING WORD I RE CEIVE

Detailed description: This block contains the fifth system of music, measures 37 through 40. It features a single treble clef staff with a key signature of one flat and a 7/4 time signature. The melody starts with a quarter rest, followed by a quarter note G4, a quarter note A4, a quarter note B4, a quarter note C5, a quarter note B4, a quarter note A4, a quarter note G4, and a quarter note F4. The final measure of the system contains a whole rest. Chord symbols F,  $Csus$ ,  $Gm^7$ , and  $\flat^2$  are positioned above the staff. The lyrics "YOUR HEA - LING WORD I RE CEIVE" are written below the notes.

VOICE

VOICE

Detailed description: This block contains the voice part for measures 37 through 40. It features a single treble clef staff with a key signature of one flat. The vocal line is mostly silent, with whole rests in all four measures. The word "VOICE" is written to the left of the staff.

**DOUBLE CHORUS**

41 F Csus Gm7 Bb2

HEA - LING WORD\_ YOU SPEAK THE HEA - LING\_ WORD\_

VOICE

HEA - LING\_ WORD\_

45 F Csus Gm7 Bb2

YOUR HEA - LING WORD\_ SETS ME FREE\_

VOICE

49 F Csus Gm7 Bb2

HEA - LING WORD\_ YOU SPEAK THE HEA - LING\_ WORD\_

VOICE

HEA - LING\_ WORD\_

53 F Csus Gm7 Bb2

YOUR HEA - LING WORD\_ I RE CEIVE\_

57 F Csus Gm7 Bb2

YOUR HEA - LING WORD\_ I RE CEIVE\_

61 F Csus Gm7 Bb2

YOUR HEALING WORD I RECEIVE

65 F F2 Dm7

**I LOVE YOU CHORUS - VAMP**

I LOVE YOU LORD I LOVE

69 Bb2 Dm7 G#m7 Bb2

YOU LORD I LOVE YOU I LOVE YOU LORD

73 F2 F

I LOVE