

# My Offering

5

Capo 1 (G)

Words and Music by  
BRETT WILLIAMS

♩ = 86

Keyboard: A<sup>b</sup>  
Guitar: (G)

A<sup>b</sup>sus  
(G<sup>sus</sup>)

A<sup>b</sup>  
(G)

A<sup>b</sup>sus  
(G<sup>sus</sup>)



1. Here in my heart for - ev - er grate - ful  
2. I can't ex - plain this trans - for - ma - tion,

A<sup>b</sup>  
(G)

A<sup>b</sup>sus  
(G<sup>sus</sup>)

A<sup>b</sup>  
(G)

A<sup>b</sup>sus  
(G<sup>sus</sup>)



is all by my love for - ev - er faith - ful.  
but by Your Spir - it, I'm a - wak - ened!

D<sup>b</sup>  
(C)

E<sup>b</sup>2  
(D<sup>2</sup>)

D<sup>b</sup>/E<sup>b</sup>  
(C/D)

E<sup>b</sup>2/F  
(D<sup>2</sup>/E)



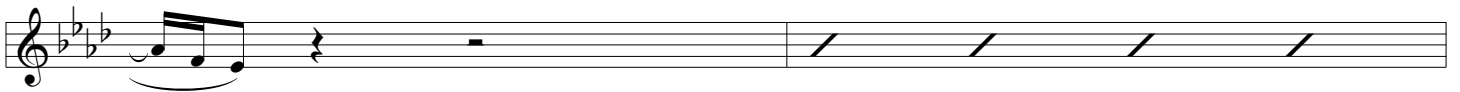
Lord, You're all I have, all I need, all I want.  
Lord, You're all I have, all I need, all I want.

A<sup>b</sup>  
(G)

A<sup>b</sup>sus  
(G<sup>sus</sup>)

A<sup>b</sup>  
(G)

A<sup>b</sup>sus  
(G<sup>sus</sup>)



A<sup>b</sup>  
(G)

A<sup>b</sup>sus  
(G<sup>sus</sup>)

A<sup>b</sup>  
(G)

A<sup>b</sup>sus  
(G<sup>sus</sup>)



My dear - est Friend, my true com - pan - ion,  
I can't re - pay so great a mer - cy

A<sup>b</sup>  
(G)

A<sup>b</sup>sus  
(G<sup>sus</sup>)

A<sup>b</sup>  
(G)

A<sup>b</sup>sus  
(G<sup>sus</sup>)



You took me in lost and a - ban - doned.  
poured out each day, but I am learn - ing.

D<sup>b</sup>  
(C)

E<sup>b</sup>2  
(D<sup>2</sup>)

D<sup>b</sup>/E<sup>b</sup>  
(C/D)

E<sup>b</sup>2/F  
(D<sup>2</sup>/E)



Lord, You're all I have, all I need, all I want.  
Lord, You're all I have, all I need, all I want.

© 2005 Brett Williams Music.  
All Rights Reserved. Used by Permission.

Ab (G) Absus (Gsus) Ab (G)

Oh, and this is just a

Bbm7 (Am7) Eb (D)

to - ken of de - vo - tion to Heav - en's love as

Bbm7 (Am7) Eb (D)

deep as an - y o - cean. All my life,

Ab (G) Fm (Em)

all my breath, ev - 'ry word, ev - 'ry step, ev - 'ry beat

Db (C) Eb (D) Ab (G)

of my heart will sing. Ev - 'ry joy, ev - 'ry fear, ev - 'ry smile,

Fm (Em) Db (C)

ev - 'ry tear is the least that my soul can bring.

Eb (D) Ab (G)

It's my of - fer - ing.

*Chords Used in this Song*

G	Gsus	C	D <sup>2</sup>	C/D	D <sup>2</sup> /E	Am <sup>7</sup>	D	Em
