

# Isn't He

Words and Music by  
John Wimber

♩ = 72

VERSE

G

C<sup>2</sup>/G

G

D/G



1. Is - n't He, \_ beau - ti - ful? \_ Beau - ti - ful, \_  
 2. Is - n't He, \_ won - der - ful? \_ Won - der - ful, \_  
 3. Yes, You are, \_ beau - ti - ful. \_ Beau - ti - ful, \_  
 4. Yes, You are, \_ won - der - ful. \_ Won - der - ful, \_

4

C<sup>2</sup>/G

C/G D/G

G

D/F#

Em<sup>7</sup>

D



is - n't He? \_ Prince of Peace, \_\_\_\_\_ Son of God. \_\_\_\_\_  
 is - n't He? \_ Coun - se - lor, \_\_\_\_\_ Al - might - y God. \_\_\_\_\_  
 yes, You are. \_ Prince of Peace, \_\_\_\_\_ Son of God. \_\_\_\_\_  
 yes, You are. \_ Coun - se - lor, \_\_\_\_\_ Al - might - y God. \_\_\_\_\_

7

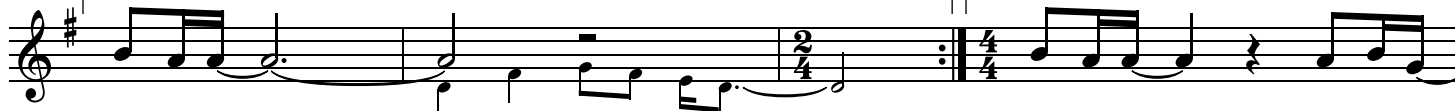
1, 3.  
G/C C<sup>6</sup>

D<sup>sus</sup> D G/D D C D

2.

G/C C<sup>6</sup>

Am<sup>7</sup>



Is - n't He? \_\_\_\_\_ Is - n't He? \_ Is - n't He? .  
 Yes, You are. \_\_\_\_\_

11

D<sup>7sus</sup>

G<sup>sus</sup>/D

G<sup>sus</sup>

G

C<sup>2</sup>/G D/G G<sup>sus</sup> G

C/G



Is - n't \_\_\_\_\_ He? \_\_\_\_\_

14

4.  
G/C C<sup>6</sup>

Am<sup>7</sup>

D<sup>7sus</sup>

G<sup>sus</sup>/D

G<sup>sus</sup>

G



Yes, You are. \_ Yes, You are. \_\_\_\_ Yes, You \_\_\_\_ are. \_\_\_\_\_