



Hale Trailer Brake & Wheel

20-89348



MC STEEL

JOB: 20-89348 **Weight** 4558 lbs. *** **Cubic Yards** 24

INSTALLATION

MOUNTING SHIP LOOSE: REAR HINGE, dump shoes

BODY

MC LITE MODEL SMOOTH SIDE
LENGTH 16
WIDTH 96 IN.
FLOOR 1/4 IN. AR450
10" LONGITUDINALS
SIDE MATERIAL 3/16 IN. AR450
WALL HEIGHT 54
TOP RAIL OPTION BRACKETS ONLY

2 IN. X 6 IN. BOARD ON EACH SIDE

REAR POCKET SLOPE 0
TARP BAR YES, SINGLE
BULKHEAD DOOR OPTION AVAILABLE FOR LARGE DOGHOUSE
SHOVEL HANGER SHIP LOOSE
CAB SHIELD FULL WIDTH
30" CABSHIELD - SHIP LOOSE - CABSHIELD HEIGHT TO BE AT 80"
D.S. FRONT STEPS INSIDE AND OUT
GRAB HANDLE YES, FRONT

CHASSIS BODY INTERFACE

HOIST NONE
BODY PROP SHIP LOOSE
HOIST MOUNT TYPE PIN TO PIN SHIP HOIST CRADLE LOOSE

LIGHTS

LIGHT TYPE GROTE L.E.D. W/ GROMMET
STD. MARKER LIGHTS SHIP FRONT REFLECTOR LOOSE
REAR POCKET LIGHTS 1 MARKER AT TOP THEN 2 OVAL STT

GATE

GATE SHEET THICKNESS 1/4 IN. AR450
GATE HEIGHT TO BE 60" FROM INSIDE OF FLOOR TO THE TOP OF THE GATE
GATE OPERATION MANUAL
HINGE TYPE SIDE SWING CS
COAL DOOR 14 IN. COAL DOOR
SPREADER CHAINS SHIP LOOSE
WINDERS / SAFETY LATCH SHIPPED LOOSE

CHASSIS

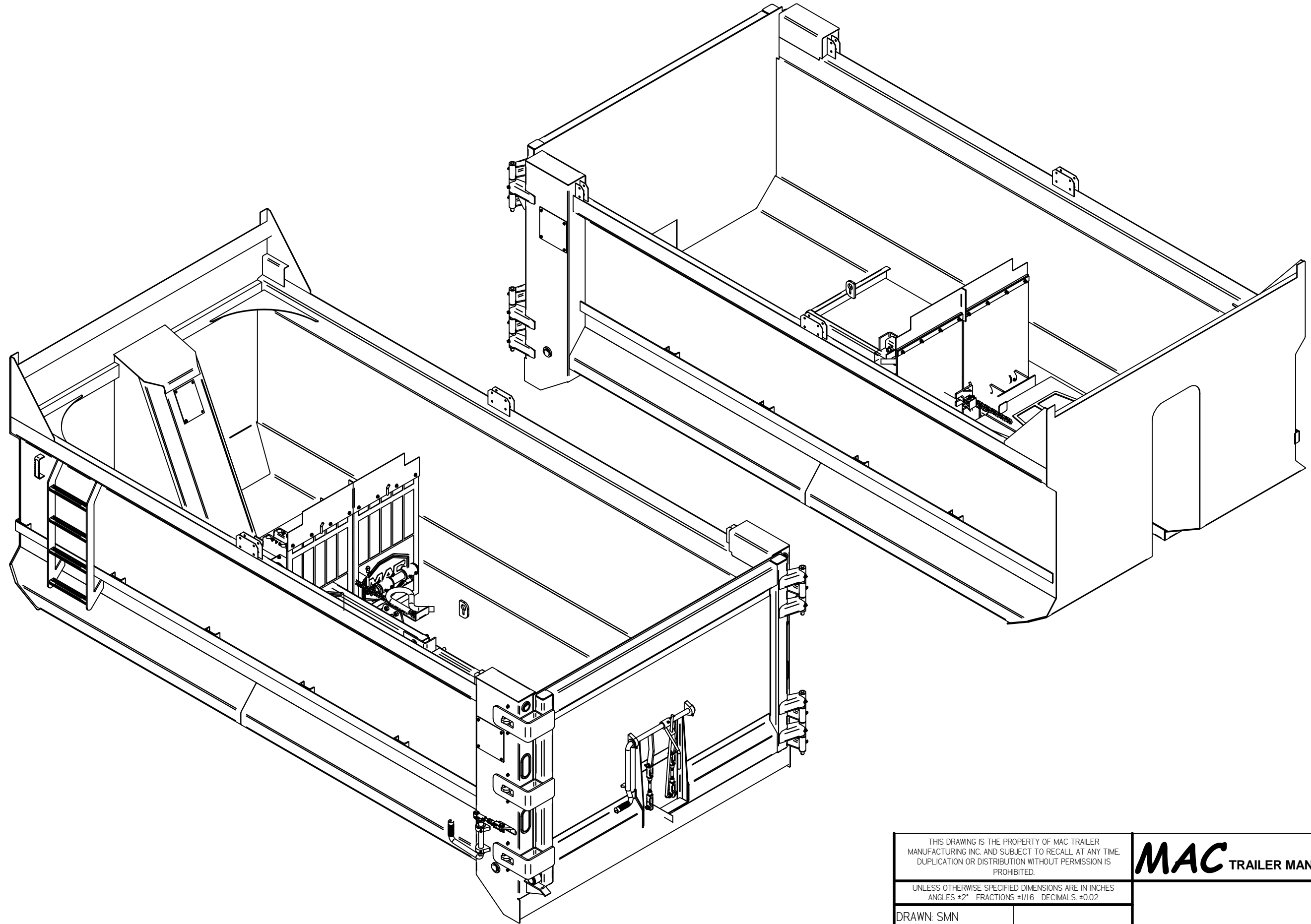
HYDRAULIC TANK NONE
FLAPS FRONT OF TIRES SHIP LOOSE
FLAPS REAR OF TIRES SHIP LOOSE
TOW HOOKS SHIP 2 RUBBER DOCK BUMPERS LOOSE

PAINT

BODY COLOR PRIMER ONLY
MAC DECALS SHIP LOOSE MAC DECALS

DISCLAIMER

Specifications are believed to be correct, but may contain errors and/or omissions. Photographs are the representative of the subject equipment but may not be identical. Equipment availability, prices and specifications are subject to change without notice.



THIS DRAWING IS THE PROPERTY OF MAC TRAILER
MANUFACTURING INC. AND SUBJECT TO RECALL AT ANY TIME.
DUPLICATION OR DISTRIBUTION WITHOUT PERMISSION IS
PROHIBITED.

UNLESS OTHERWISE SPECIFIED DIMENSIONS ARE IN INCHES
ANGLES $\pm 2^\circ$ FRACTIONS $\pm 1/16$ DECIMALS ± 0.02

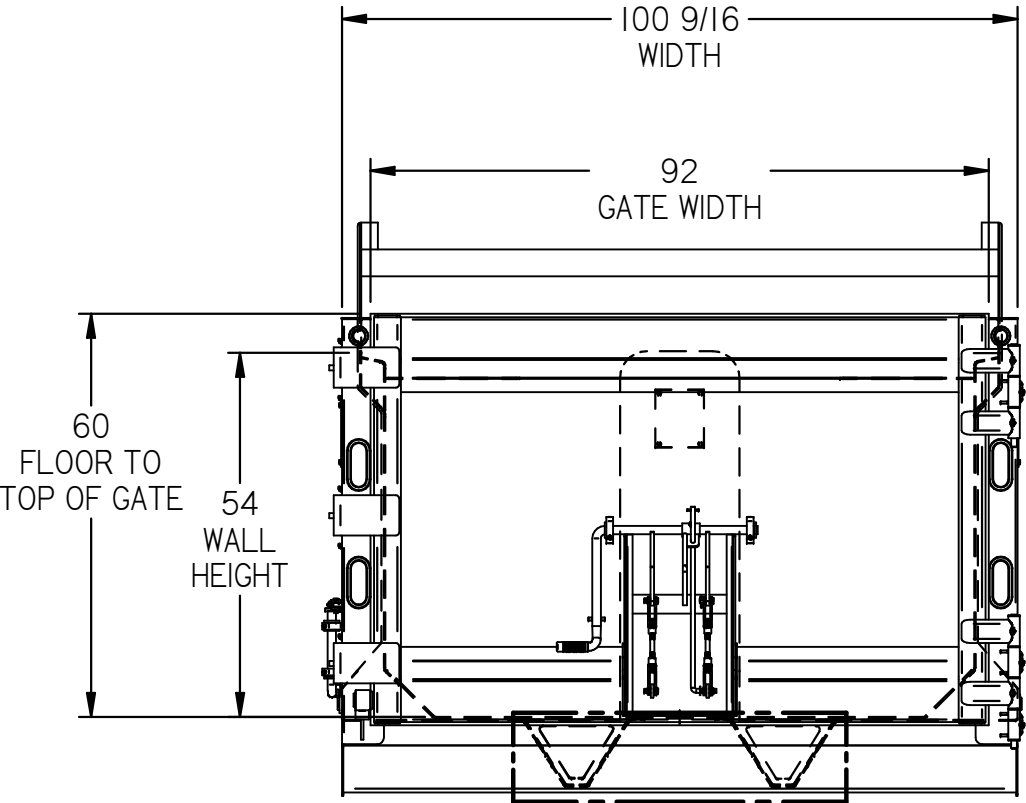
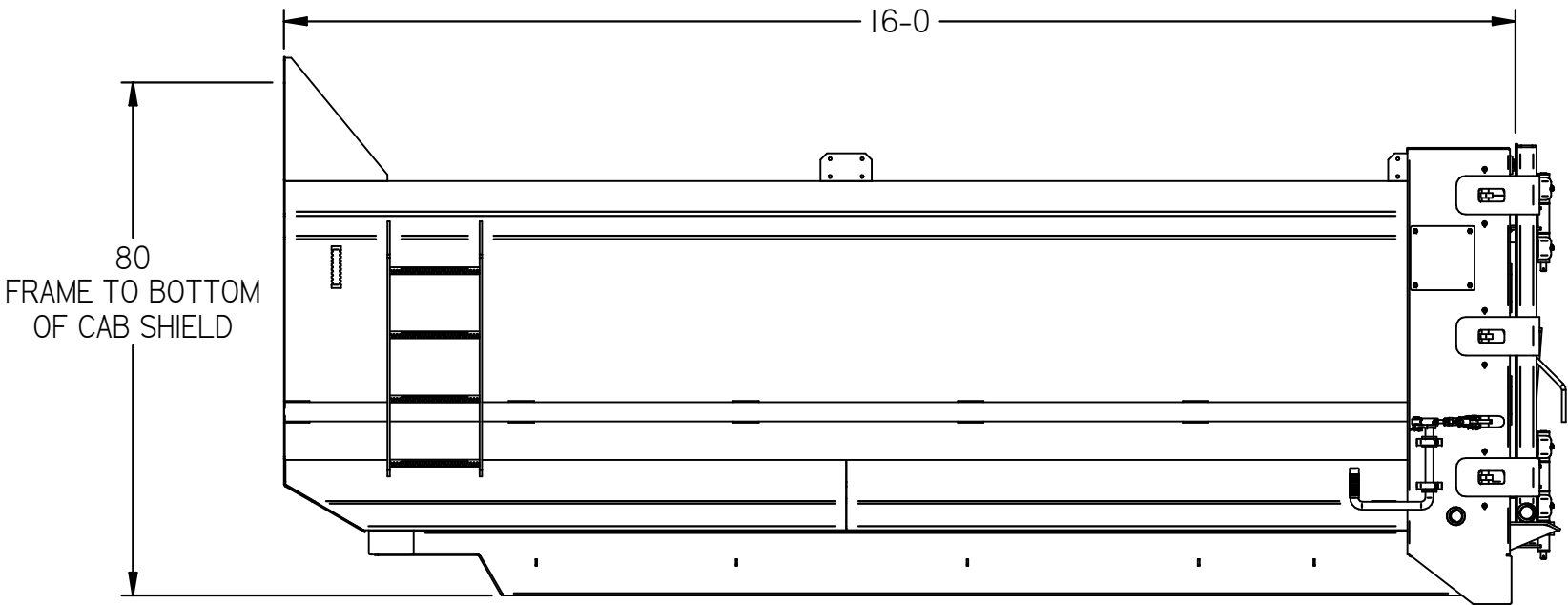
DRAWN: SMN

WEIGHT: 6407.7 lbm

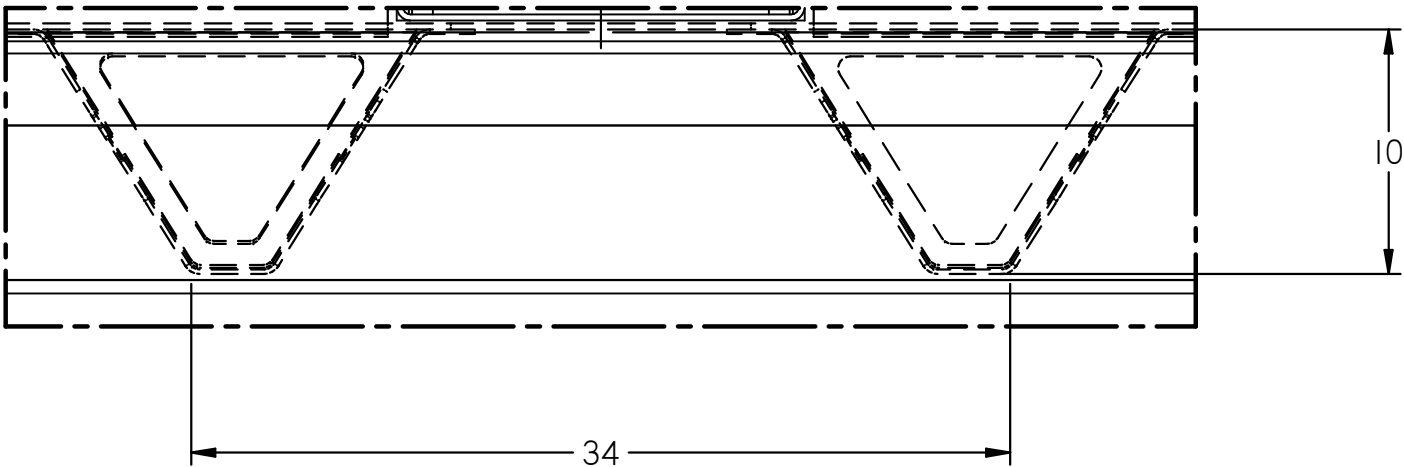
MAC TRAILER MANUFACTURING INC.

PAGE 1 OF 5

SHIP LOOSE			
ITEM	DESCRIPTION	ITEM	DESCRIPTION
1*	HOIST DOGHOUSE MOUNT	7*	FLAPS (FRONT AND REAR)
2*	HOIST CHASSIS MOUNT	8*	BODY PROP
3*	DOCK BUMPER	9*	REAR HINGE
4*	DECALS, DOT TAPE, LOGOS	10*	DUMP SHOES (HINGE CONNECTION)
5*	SPREADER CHAINS	11*	SHOVEL HANGER
6*	GATE WINDERS	12*	CAB SHIELD



A




DETAIL A

THIS DRAWING IS THE PROPERTY OF MAC TRAILER MANUFACTURING INC. AND SUBJECT TO RECALL AT ANY TIME. DUPLICATION OR DISTRIBUTION WITHOUT PERMISSION IS PROHIBITED.

UNLESS OTHERWISE SPECIFIED DIMENSIONS ARE IN INCHES
 ANGLES ±2° FRACTIONS ±1/16 DECIMALS ±0.02

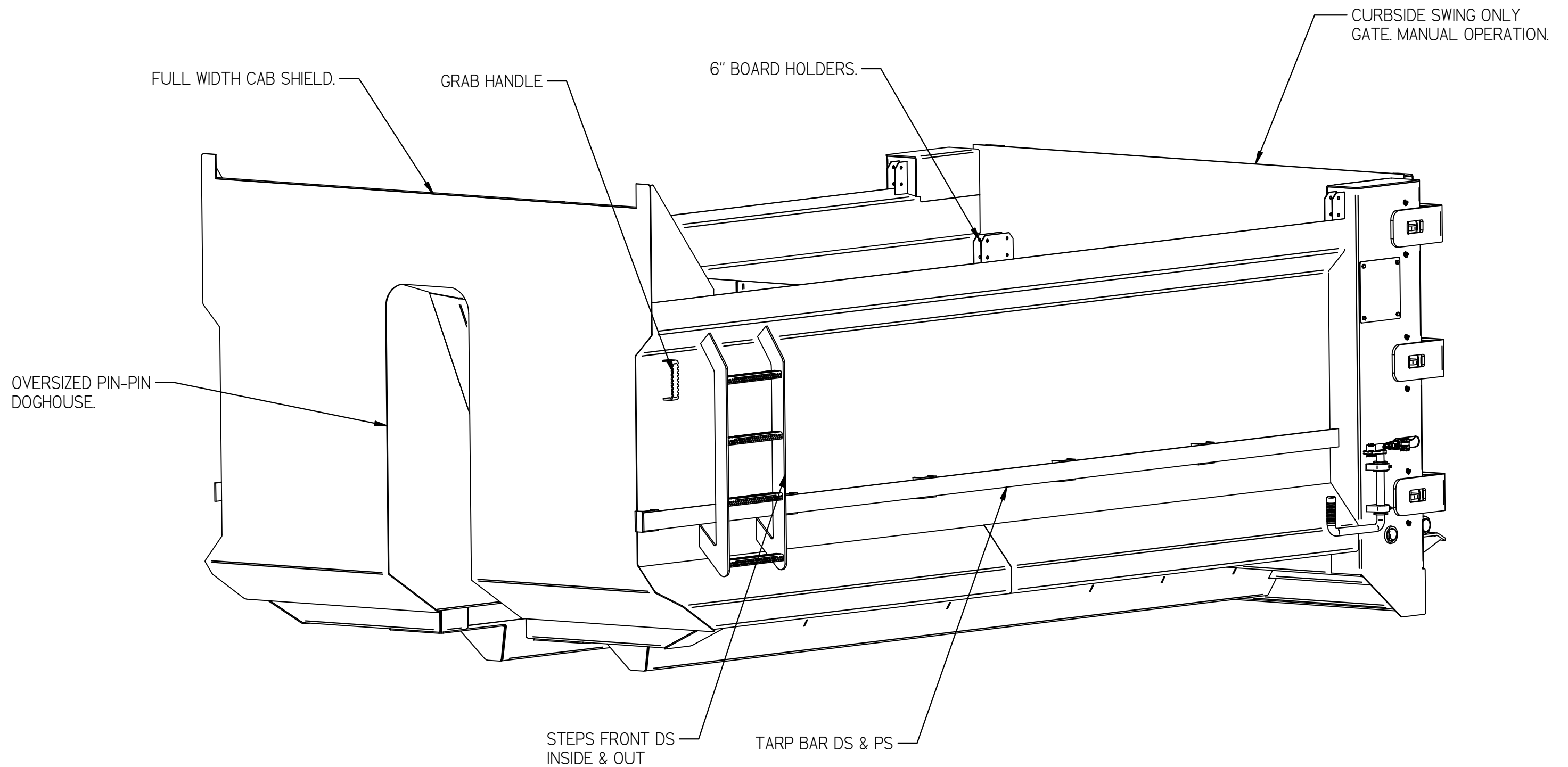
DRAWN: SMN

WEIGHT: 6407.7 lbm



TRAILER MANUFACTURING INC.

PAGE 2 OF 5



THIS DRAWING IS THE PROPERTY OF MAC TRAILER
MANUFACTURING INC. AND SUBJECT TO RECALL AT ANY TIME.
DUPLICATION OR DISTRIBUTION WITHOUT PERMISSION IS
PROHIBITED.

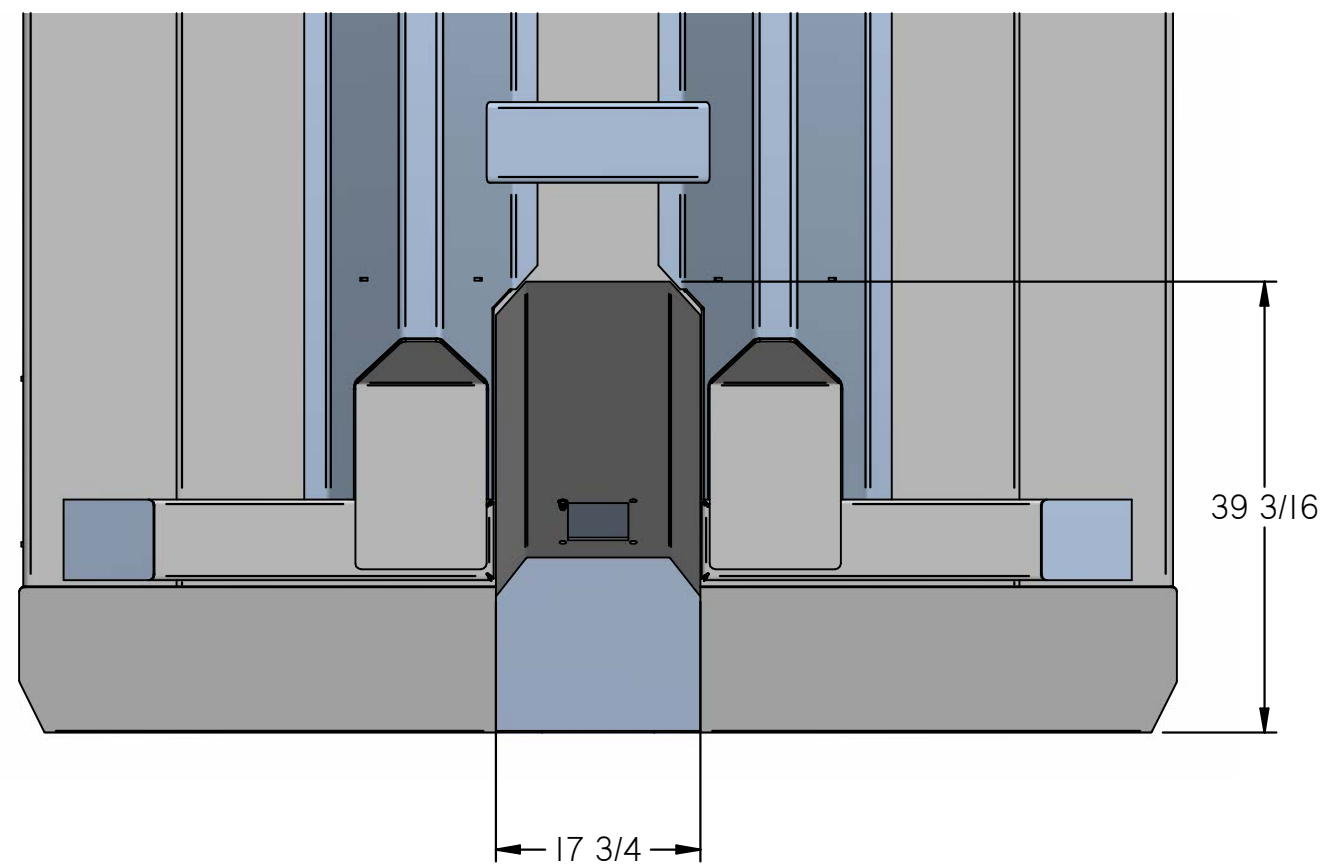
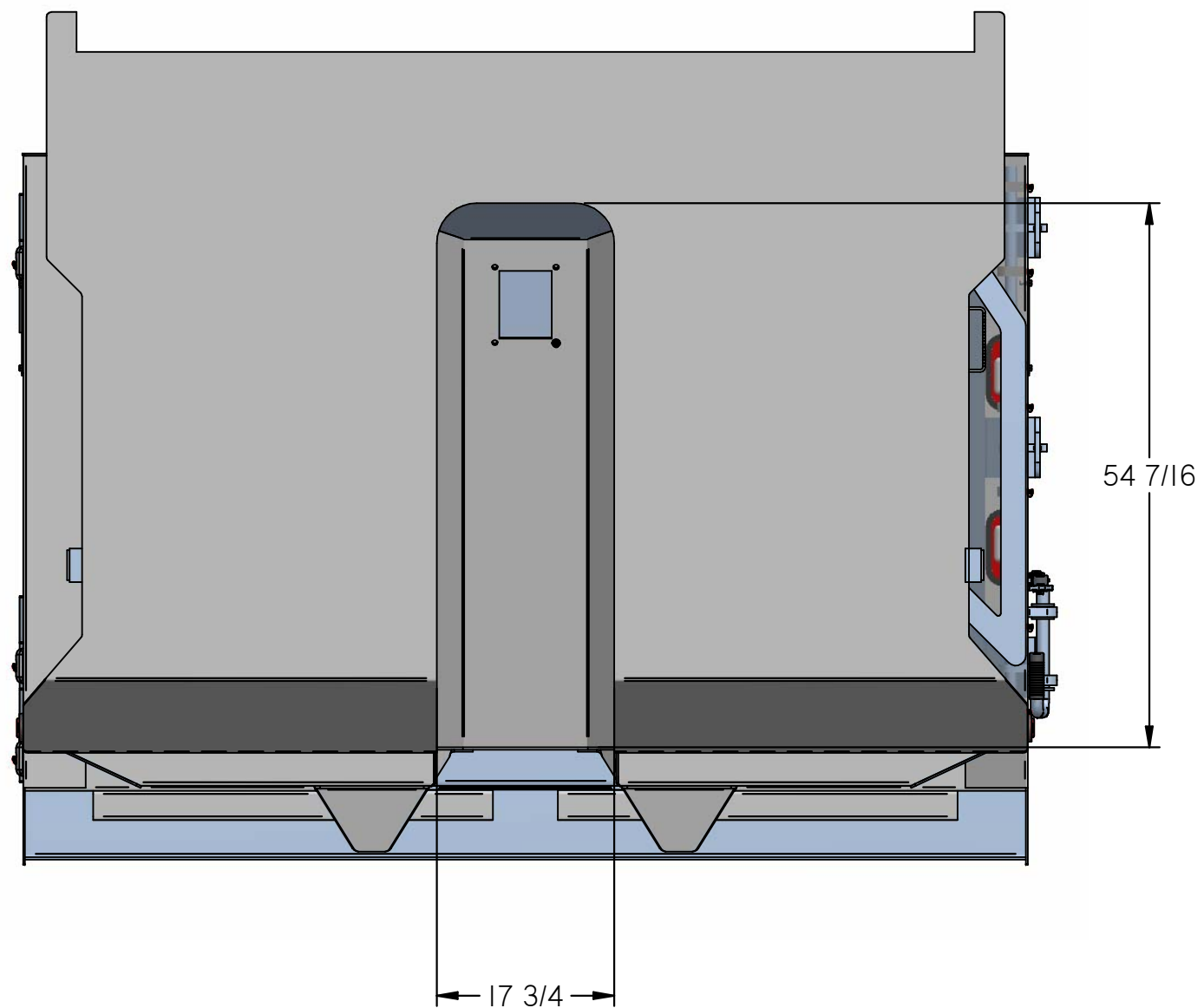
UNLESS OTHERWISE SPECIFIED DIMENSIONS ARE IN INCHES
ANGLES $\pm 2^\circ$ FRACTIONS $\pm 1/16$ DECIMALS ± 0.02

DRAWN: SMN

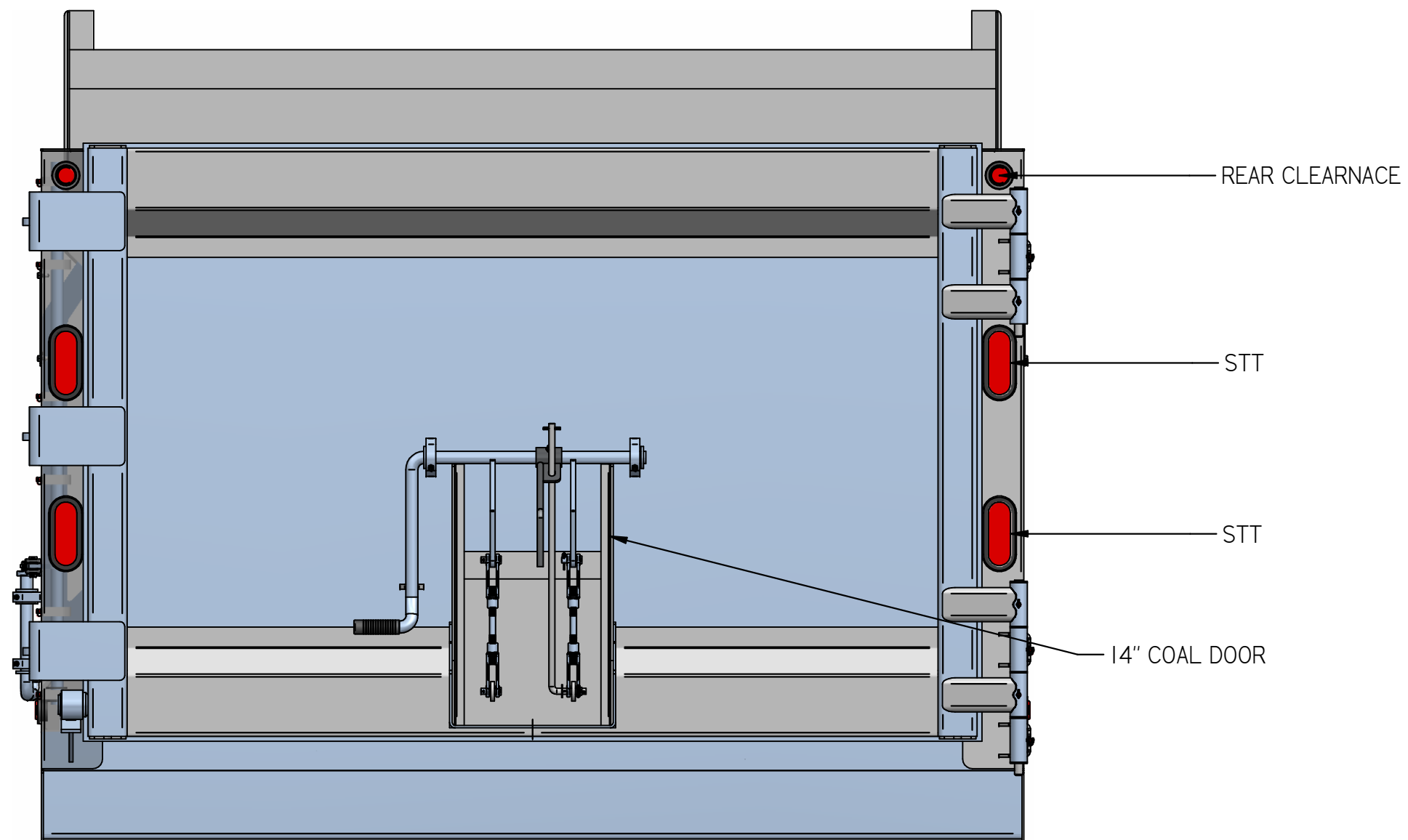
WEIGHT: 6407.7 lbm

MAC TRAILER MANUFACTURING INC.

PAGE 3 OF 5



THIS DRAWING IS THE PROPERTY OF MAC TRAILER MANUFACTURING INC. AND SUBJECT TO RECALL AT ANY TIME. DUPLICATION OR DISTRIBUTION WITHOUT PERMISSION IS PROHIBITED.		<div>MAC TRAILER MANUFACTURING INC.</div>	
UNLESS OTHERWISE SPECIFIED DIMENSIONS ARE IN INCHES ANGLES ±2° FRACTIONS 1/16 DECIMALS: ±0.02			
DRAWN: SMN		PAGE 4 OF 5	
WEIGHT: 6407.7 lbm			



THIS DRAWING IS THE PROPERTY OF MAC TRAILER
MANUFACTURING INC. AND SUBJECT TO RECALL AT ANY TIME.
DUPLICATION OR DISTRIBUTION WITHOUT PERMISSION IS
PROHIBITED.

UNLESS OTHERWISE SPECIFIED DIMENSIONS ARE IN INCHES
ANGLES $\pm 2^\circ$ FRACTIONS $\pm 1/16$ DECIMALS ± 0.02

DRAWN: SMN

WEIGHT: 6407.7 lbm

MAC TRAILER MANUFACTURING INC.

PAGE 5 OF 5