

'Q-DB' -QUICK START EXAMPLE

1. Go to http://www.ukseakayakguidebook.co.uk/short_articles/vhf_channels.htm

[Using the radio channel information](#)

[COMMUNITY TRIPS ALMANAC CONTRIBUTE BOOKS REVIEWS](#)

International Marine VHF Channels

These are the International Marine VHF Channels, as used by UK Coastguard. Note that Canadian and US Coastguards will use different channels.

Use Channel 16 for initial calling, and for Distress and Safety Calling. Once contact is established, the station called will nominate a Working Channel on which the contact is then continued. The calling station should acknowledge acceptance before changing channel. Note that after the initial contact, the station must switch to a Working Channel, except for safety matters. Working Channels are noted below on [QDB](#). It is advised to keep the Channels used by UK Coastguard clear, they will probably direct you to one of them for routine traffic.

Channel 13 is designated for navigation (sometimes known as "bridge to bridge") and may be a possible channel for calling a merchant ship if no contact on channel 16.

Are you close enough to use "line power" (1 watt)? - Doing so saves your battery and also reduces the range your signal achieves - this prevents the channel being cluttered and helps other people access it.

Channel 70 is exclusively for DSC calling for safety and emergency and must not be used for other purposes.

[Click here to download a PDF version of this page.](#)

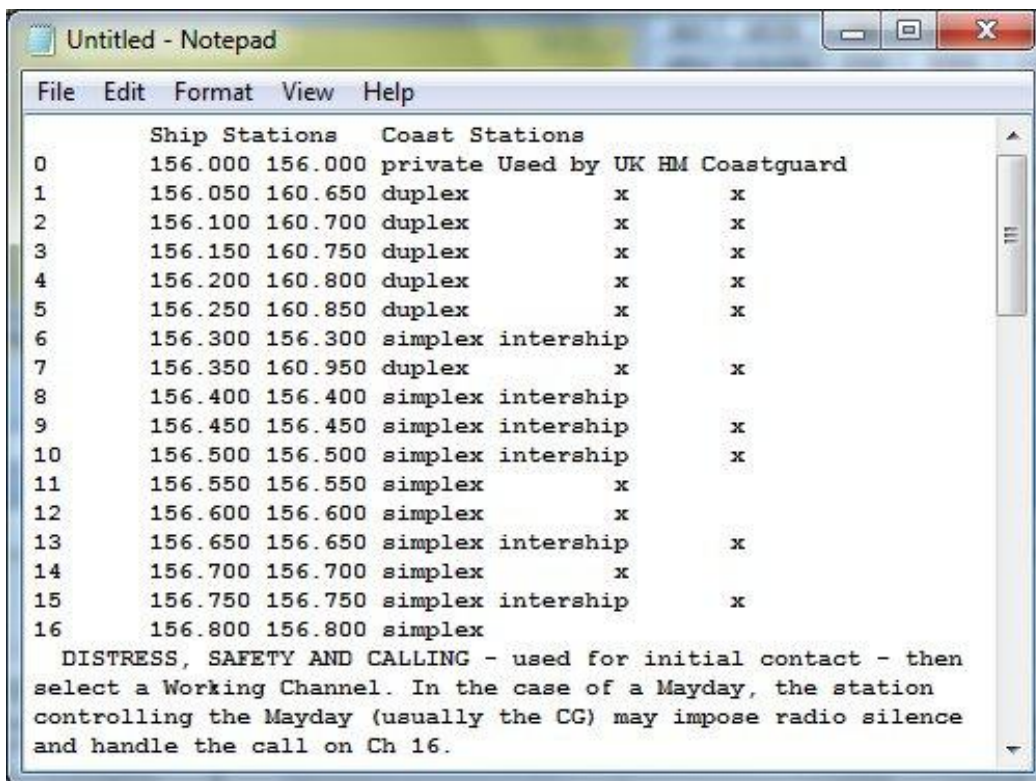
International VHF Channels	Transmitting Frequencies (MHz)		Intership	Port Operations and Ship Movement	Public correspondence
	Ship Stations	Coast Stations			
0	156.400	156.400	private		
1	156.400	160.650	Coastguard	Used by UK VHF Coastguard	x
2	156.100	160.700	Coastguard	x	x
3	156.150	160.750	Coastguard	x	x
4	156.200	160.800	Coastguard	x	x
5	156.450	160.850	Coastguard	x	x
6	156.300	158.300	Navigation	Intership	
7	156.350	160.250	Coastguard	x	
8	156.400	158.400	Navigation	Intership	x
9	156.450	158.450	Navigation	Intership	x
10	156.500	158.500	Navigation	Intership	x
11	156.550	158.550	Navigation	x	
12	156.600	158.600	Navigation	x	
13	156.650	158.650	Navigation	Intership	x
14	156.700	158.700	Navigation	x	
15	156.750	158.750	Navigation	Intership	x
16	156.800	158.800	Navigation	DISTRESS, SAFETY AND CALLING - used for initial contact - then select a Working Channel. In the case of a Mayday, the station controlling the Mayday (usually the CG) may impose radio silence and handle the call on Ch 16.	
17	156.850	158.850	Navigation	Intership	x
18	156.900	161.900	Navigation	x	
19	156.950	161.950	Navigation	x	
20	157.000	161.000	Navigation	x	
21	157.050	161.050	Navigation	x	
22	157.100	161.100	Navigation	x	
23	157.150	161.150	Navigation	x	
24	157.200	161.200	Navigation	x	
25	157.250	161.250	Navigation	x	
26	157.300	161.300	Navigation	x	
27	157.350	161.350	Navigation	x	
28	157.400	161.400	Navigation	x	
29 to 36					
37 (M)	157.450	157.450	Navigation	Used by UK Marines and Yacht Clubs	
38 to 39					
40	156.625	160.625	Navigation	x	x
41	156.675	160.675	Navigation	x	x
42	156.725	160.725	Navigation	x	x
43	156.775	160.775	Navigation	x	x
44	156.825	160.825	Navigation	x	x
45	156.875	160.875	Navigation	x	x
46	156.925	160.925	Navigation	x	x
47	156.975	158.975	Navigation	Intership	
48	156.425	158.425	Navigation	x	
49	156.475	158.475	Navigation	Intership	
50	156.525	158.525	Navigation	Used for selective calling (DSC) - DSC M	
51	156.575	158.575	Navigation	x	
52	156.625	158.625	Navigation	Intership	
53	156.675	158.675	Navigation	Intership	
54	156.725	158.725	Navigation	x	
55	156.775	158.775	Navigation	x	
56	156.825	158.825	Navigation	x	
57	156.875	158.875	Navigation	Intership	
58	156.925	161.925	Navigation	x	
59	156.975	161.975	Navigation	x	
60	157.025	161.025	Navigation	x	
61	157.075	161.075	Navigation	x	
62	157.125	161.125	Navigation	x	
63	157.175	161.175	Navigation	x	
64	157.225	161.225	Navigation	x	
65	157.275	161.275	Navigation	x	
66	157.325	161.325	Navigation	x	
67	157.375	161.375	Navigation	x	

2. Use the mouse to highlight the frequencies

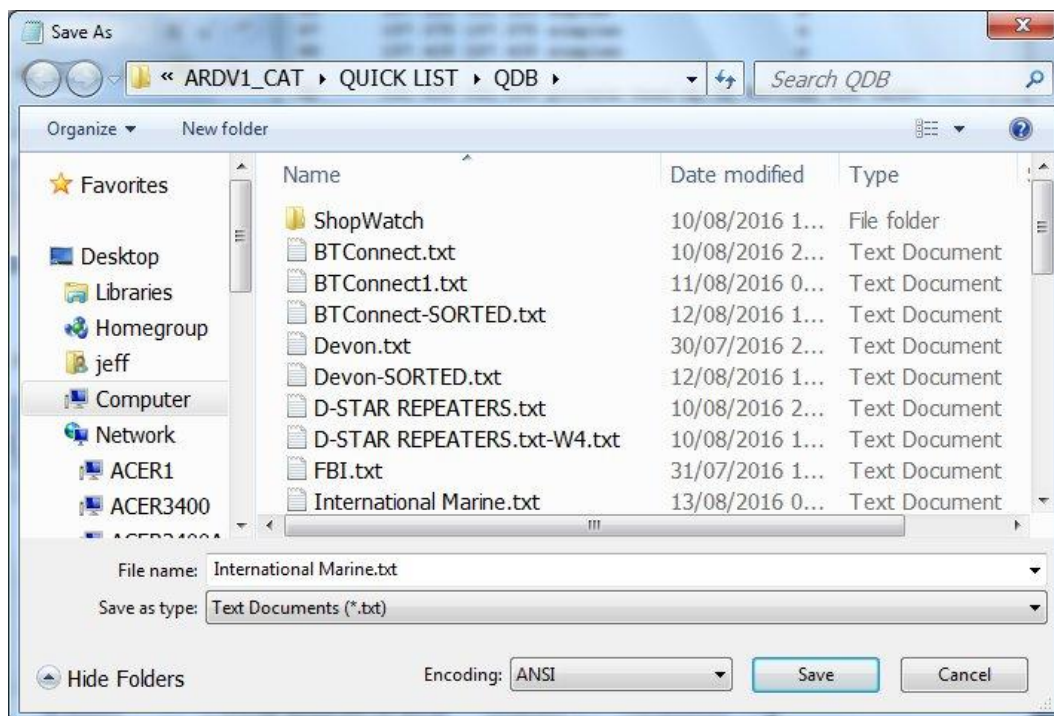
International VHF Channels	Transmitting Frequencies (MHz)		Intership	Port Operations and Ship Movement	Public correspondence
	Ship Stations	Coast Stations			
0	156.400	156.400	private		
1	156.400	160.240	Coastguard	Used by UK VHF Coastguard	x
2	156.100	160.700	Coastguard	x	x
3	156.100	160.740	Coastguard	x	x
4	156.200	160.800	Coastguard	x	x
5	156.450	160.850	Coastguard	x	x
6	156.300	158.300	Navigation	Intership	
7	156.300	160.200	Coastguard	x	
8	156.400	158.400	Navigation	Intership	x
9	156.450	158.450	Navigation	Intership	x
10	156.500	158.500	Navigation	Intership	x
11	156.550	158.550	Navigation	x	
12	156.600	158.600	Navigation	x	
13	156.650	158.650	Navigation	Intership	x
14	156.700	158.700	Navigation	x	
15	156.750	158.750	Navigation	Intership	x
16	156.800	158.800	Navigation	DISTRESS, SAFETY AND CALLING - used for initial contact - then select a Working Channel. In the case of a Mayday, the station controlling the Mayday (usually the CG) may impose radio silence and handle the call on Ch 16.	
17	156.850	158.850	Navigation	Intership	x
18	156.900	161.900	Navigation	x	
19	156.950	161.950	Navigation	x	
20	157.000	161.000	Navigation	x	
21	157.050	161.050	Navigation	x	
22	157.100	161.100	Navigation	x	
23	157.150	161.150	Navigation	x	
24	157.200	161.200	Navigation	x	
25	157.250	161.250	Navigation	x	
26	157.300	161.300	Navigation	x	
27	157.350	161.350	Navigation	x	
28	157.400	161.400	Navigation	x	
29 to 36					
37 (M)	157.450	157.450	Navigation	Used by UK Marines and Yacht Clubs	
38 to 39					
40	156.625	160.625	Navigation	x	x
41	156.675	160.675	Navigation	x	x
42	156.725	160.725	Navigation	x	x
43	156.775	160.775	Navigation	x	x
44	156.825	160.825	Navigation	x	x
45	156.875	160.875	Navigation	x	x
46	156.925	160.925	Navigation	x	x
47	156.975	158.975	Navigation	Intership	
48	156.425	158.425	Navigation	x	
49	156.475	158.475	Navigation	Intership	
50	156.525	158.525	Navigation	Used for selective calling (DSC) - DSC M	
51	156.575	158.575	Navigation	x	
52	156.625	158.625	Navigation	Intership	
53	156.675	158.675	Navigation	Intership	
54	156.725	158.725	Navigation	x	
55	156.775	158.775	Navigation	x	
56	156.825	158.825	Navigation	x	
57	156.875	158.875	Navigation	Intership	
58	156.925	161.925	Navigation	x	
59	156.975	161.975	Navigation	x	
60	157.025	161.025	Navigation	x	
61	157.075	161.075	Navigation	x	
62	157.125	161.125	Navigation	x	
63	157.175	161.175	Navigation	x	
64	157.225	161.225	Navigation	x	
65	157.275	161.275	Navigation	x	
66	157.325	161.325	Navigation	x	
67	157.375	161.375	Navigation	x	
68	157.425	157.425	Navigation	Used by UK Marines and Yacht Clubs	
69	156.425	158.425	Navigation	x	
70	156.625	160.625	Navigation	Used for selective calling (DSC) - DSC M	
71	156.975	161.975	Navigation	Used by UK Marines and Yacht Clubs	

Summary
Primary Intership Working Channels: 06, 08, 09, 10, 11, 12, 13, 15, 16, 17, 21, 22, 23, 24, 25, 26, 27, 28, 29, 30, 31, 32, 33, 34, 35, 36, 37, 38, 39, 40, 41, 42, 43, 44, 45, 46, 47, 48, 49, 50, 51, 52, 53, 54, 55, 56, 57, 58, 59, 60, 61, 62, 63, 64, 65, 66, 67, 68, 69, 70, 71, 72, 73, 74, 75, 76, 77, 78, 79, 80, 81, 82, 83, 84, 85, 86, 87, 88, 89, 90, 91, 92, 93, 94, 95, 96, 97, 98, 99, 100, 101, 102, 103, 104, 105, 106, 107, 108, 109, 110, 111, 112, 113, 114, 115, 116, 117, 118, 119, 120, 121, 122, 123, 124, 125, 126, 127, 128, 129, 130, 131, 132, 133, 134, 135, 136, 137, 138, 139, 140, 141, 142, 143, 144, 145, 146, 147, 148, 149, 150, 151, 152, 153, 154, 155, 156, 157, 158, 159, 160, 161, 162, 163, 164, 165, 166, 167, 168, 169, 170, 171, 172, 173, 174, 175, 176, 177, 178, 179, 180, 181, 182, 183, 184, 185, 186, 187, 188, 189, 190, 191, 192, 193, 194, 195, 196, 197, 198, 199, 200, 201, 202, 203, 204, 205, 206, 207, 208, 209, 210, 211, 212, 213, 214, 215, 216, 217, 218, 219, 220, 221, 222, 223, 224, 225, 226, 227, 228, 229, 230, 231, 232, 233, 234, 235, 236, 237, 238, 239, 240, 241, 242, 243, 244, 245, 246, 247, 248, 249, 250, 251, 252, 253, 254, 255, 256, 257, 258, 259, 260, 261, 262, 263, 264, 265, 266, 267, 268, 269, 270, 271, 272, 273, 274, 275, 276, 277, 278, 279, 280, 281, 282, 283, 284, 285, 286, 287, 288, 289, 290, 291, 292, 293, 294, 295, 296, 297, 298, 299, 300, 301, 302, 303, 304, 305, 306, 307, 308, 309, 310, 311, 312, 313, 314, 315, 316, 317, 318, 319, 320, 321, 322, 323, 324, 325, 326, 327, 328, 329, 330, 331, 332, 333, 334, 335, 336, 337, 338, 339, 340, 341, 342, 343, 344, 345, 346, 347, 348, 349, 350, 351, 352, 353, 354, 355, 356, 357, 358, 359, 360, 361, 362, 363, 364, 365, 366, 367, 368, 369, 370, 371, 372, 373, 374, 375, 376, 377, 378, 379, 380, 381, 382, 383, 384, 385, 386, 387, 388, 389, 390, 391, 392, 393, 394, 395, 396, 397, 398, 399, 400, 401, 402, 403, 404, 405, 406, 407, 408, 409, 410, 411, 412, 413, 414, 415, 416, 417, 418, 419, 420, 421, 422, 423, 424, 425, 426, 427, 428, 429, 430, 431, 432, 433, 434, 435, 436, 437, 438, 439, 440, 441, 442, 443, 444, 445, 446, 447, 448, 449, 450, 451, 452, 453, 454, 455, 456, 457, 458, 459, 460, 461, 462, 463, 464, 465, 466, 467, 468, 469, 470, 471, 472, 473, 474, 475, 476, 477, 478, 479, 480, 481, 482, 483, 484, 485, 486, 487, 488, 489, 490, 491, 492, 493, 494, 495, 496, 497, 498, 499, 500, 501, 502, 503, 504, 505, 506, 507, 508, 509, 510, 511, 512, 513, 514, 515, 516, 517, 518, 519, 520, 521, 522, 523, 524, 525, 526, 527, 528, 529, 530, 531, 532, 533, 534, 535, 536, 537, 538, 539, 540, 541, 542, 543, 544, 545, 546, 547, 548, 549, 550, 551, 552, 553, 554, 555, 556, 557, 558, 559, 560, 561, 562, 563, 564, 565, 566, 567, 568, 569, 570, 571, 572, 573, 574, 575, 576, 577, 578, 579, 580, 581, 582, 583, 584, 585, 586, 587, 588, 589, 590, 591, 592, 593, 594, 595, 596, 597, 598, 599, 600, 601, 602, 603, 604, 605, 606, 607, 608, 609, 610, 611, 612, 613, 614, 615, 616, 617, 618, 619, 620, 621, 622, 623, 624, 625, 626, 627, 628, 629, 630, 631, 632, 633, 634, 635, 636, 637, 638, 639, 640, 641, 642, 643, 644, 645, 646, 647, 648, 649, 650, 651, 652, 653, 654, 655, 656, 657, 658, 659, 660, 661, 662, 663, 664, 665, 666, 667, 668, 669, 670, 671, 672, 673, 674, 675, 676, 677, 678, 679, 680, 681, 682, 683, 684, 685, 686, 687, 688, 689, 690, 691, 692, 693, 694, 695, 696, 697, 698, 699, 700, 701, 702, 703, 704, 705, 706, 707, 708, 709, 710, 711, 712, 713, 714, 715, 716, 717, 718, 719, 720, 721, 722, 723, 724, 725, 726, 727, 728, 729, 730, 731, 732, 733, 734, 735, 736, 737, 738, 739, 740, 741, 742, 743, 744, 745, 746, 747, 748, 749, 750, 751, 752, 753, 754, 755, 756, 757, 758, 759, 760, 761, 762, 763, 764, 765, 766, 767, 768, 769, 770, 771, 772, 773, 774, 775, 776, 777, 778, 779, 780, 781, 782, 783, 784, 785, 786, 787, 788, 789, 790, 791, 792, 793, 794, 795, 796, 797, 798, 799, 800, 801, 802, 803, 804, 805, 806, 807, 808, 809, 810, 811, 812, 813, 814, 815, 816, 817, 818, 819, 820, 821, 822, 823, 824, 825, 826, 827, 828, 829, 830, 831, 832, 833, 834, 835, 836, 837, 838, 839, 840, 841, 842, 843, 844, 845, 846, 847, 848, 849, 850, 851, 852, 853, 854, 855, 856, 857, 858, 859, 860, 861, 862, 863, 864, 865, 866, 867, 868, 869, 870, 871, 872, 873, 874, 875, 876, 877, 878, 879, 880, 881, 882, 883, 884, 885, 886, 887, 888, 889, 890, 891, 892, 893, 894, 895, 896, 897, 898, 899, 900, 901, 902, 903, 904, 905, 906, 907, 908, 909, 910, 911, 912, 913, 914, 915, 916, 917, 918, 919, 920, 921, 922, 923, 924, 925, 926, 927, 928, 929, 930, 931, 932, 933, 934, 935, 936, 937, 938, 939, 940, 941, 942, 943, 944, 945, 946, 947, 948, 949, 950, 951, 952, 953, 954, 955, 956, 957, 958, 959, 960, 961, 962, 963, 964, 965, 966, 967, 968, 969, 970, 971, 972, 973, 974, 975, 976, 9

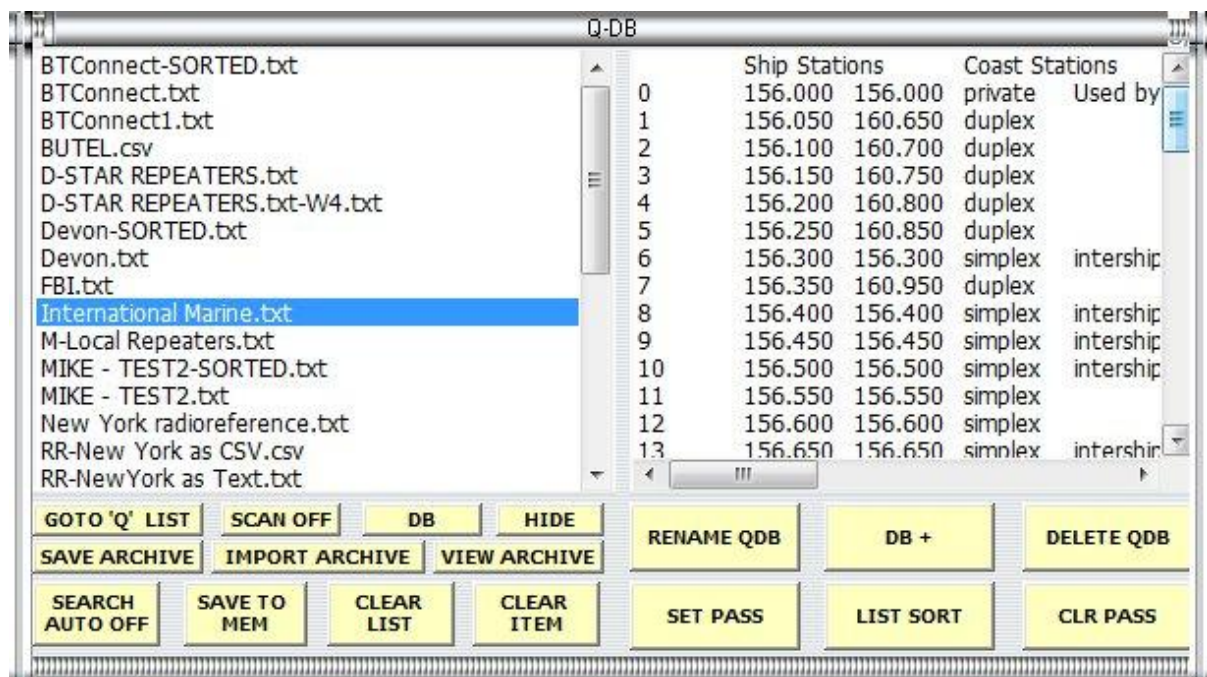
3. Open Notepad, paste the information into it



4. Save it to the 'QDB' directory



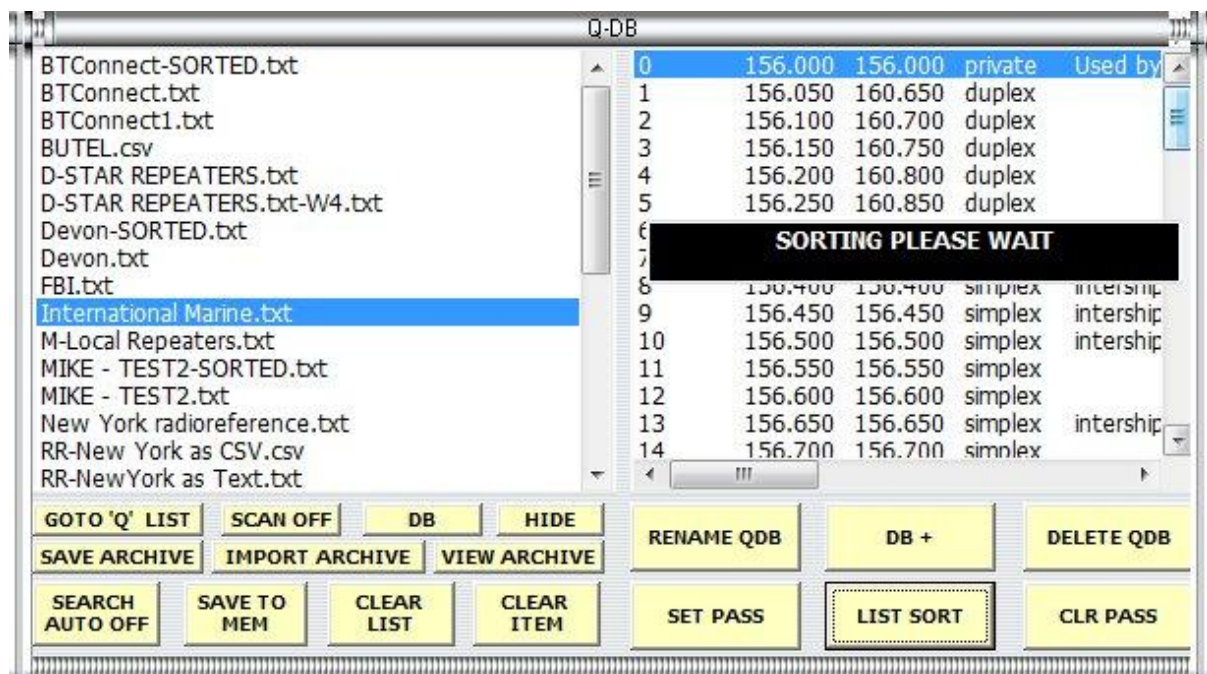
5. Click the 'DB' button in eSPYonARD



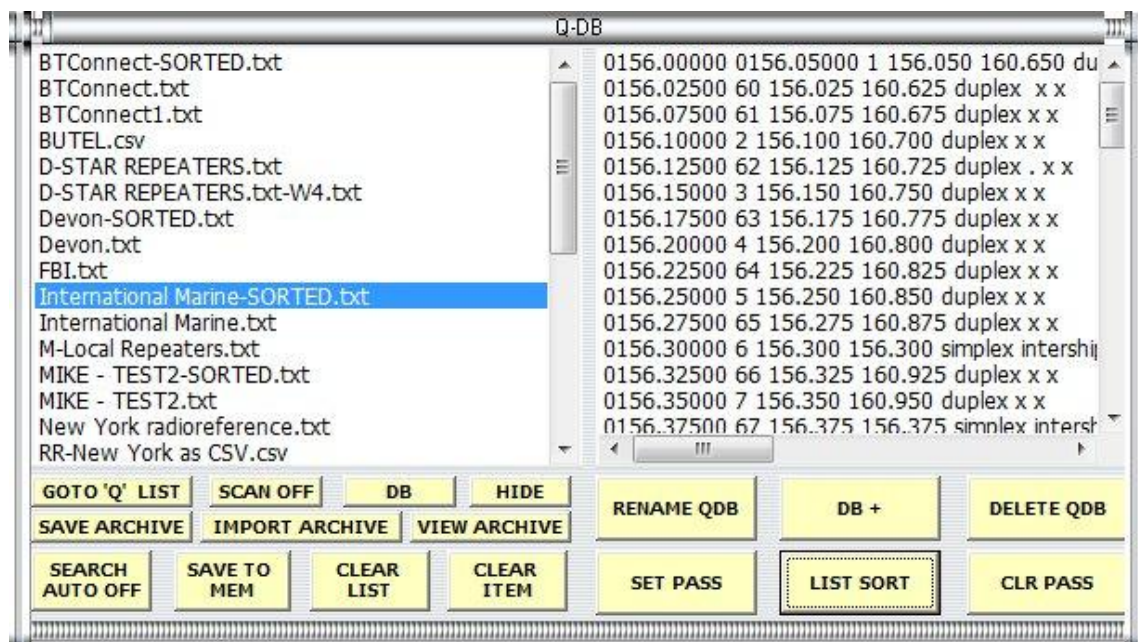
The list is in the right hand window.

As no MODE is shown in the list, the program defaults to using 'FM'.

5. Click the 'SORT LIST' button



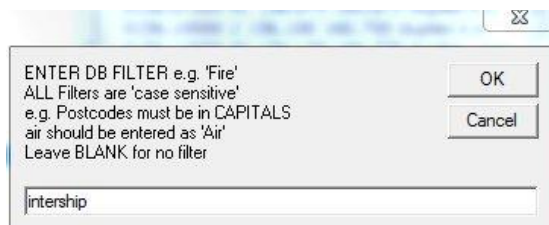
7. When complete, the frequency sorted list is shown, and automatically saved



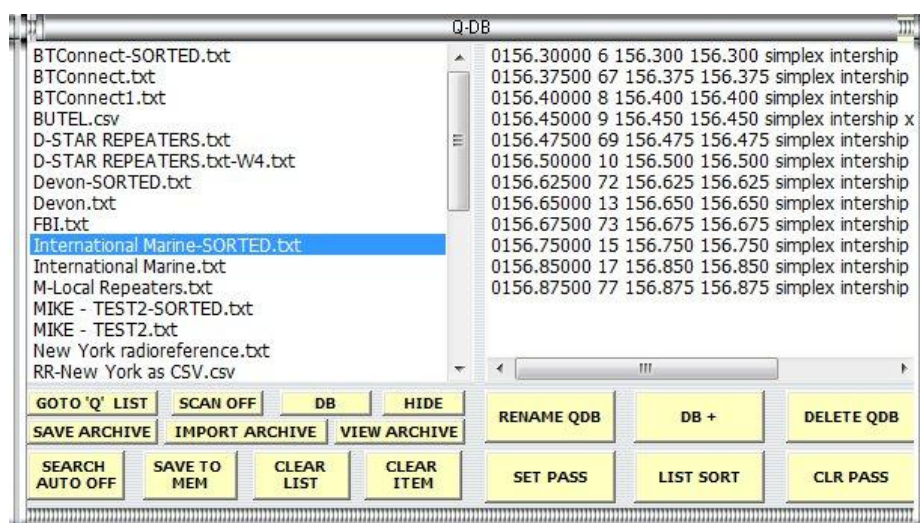
NOTE, in the left table both the original and sorted files are shown.

In either list, double click on any line, the frequency is transferred to the AR-DV1 and program's display, or click SCAN.

8. Right click the 'DB' button, and type in 'intership'



9. Click 'OK'



The filtered list can be scanned or any individual frequency transferred with a simple double-click.

To remove the filter, right click on the 'DB' button, remove the filter you entered so the line is now blank, and click 'OK'

Ask yourself this question:-

If you had read an article claiming that a software package could

"IMPORT ALMOST ANY FREQUENCY LIST, FROM ANYWHERE, AND HAVE IT UP AND RUNNING IN A SCANNER/RECEIVER, IN JUST A FEW SECONDS, for instant frequency transfer or scanning,

AND

You could create your own frequency lists in a Notepad file, or edit one you have downloaded with ease, and ready for immediate use in your receiver"

Would you have believed it, or thought it was IMPOSSIBLE

Well the impossible is here, and if doing the impossible does not convince you that **eSPYonARD (and consequently the AR-DV1) are now the most unique and powerful combination around**, then you are very, very hard to please.

Of course this is just one part of all that eSPYonARD has to offer.