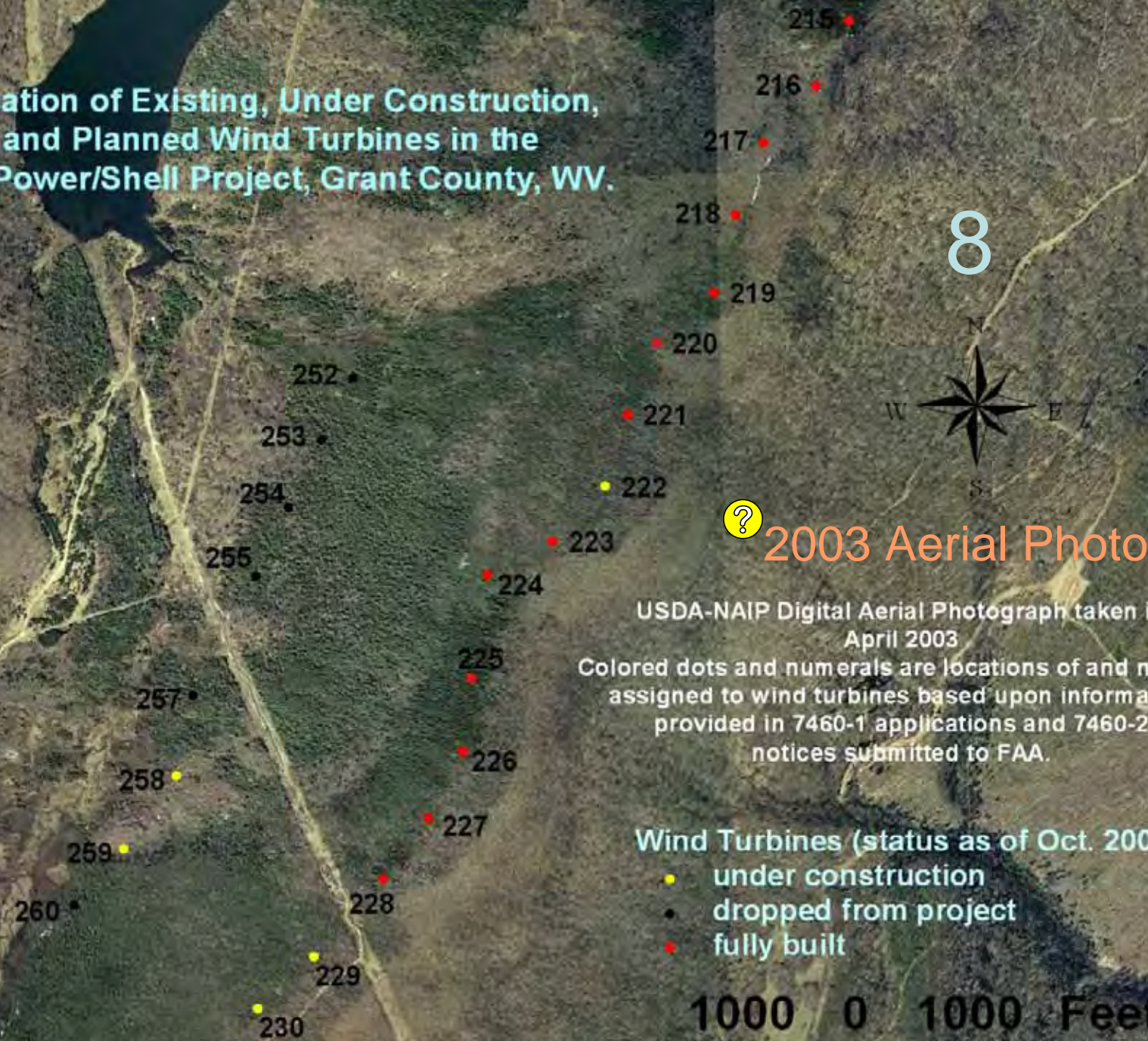


Location of Existing, Under Construction,
and Planned Wind Turbines in the
NedPower/Shell Project, Grant County, WV.



? 2003 Aerial Photo

USDA-NAIP Digital Aerial Photograph taken in
April 2003
Colored dots and numerals are locations of and number
assigned to wind turbines based upon information
provided in 7460-1 applications and 7460-2
notices submitted to FAA.

Wind Turbines (status as of Oct. 2008)

- under construction
- dropped from project
- fully built

1000 0 1000 Feet



Photograph by Bruce Halgren of NedPower/Shell wind energy project along Allegheny Front in Grant Co., WV – September 29, 2008





Photograph by Bruce Halgren of NedPower/Shell wind energy project along Allegheny Front in Grant Co., WV – September 29, 2008





222 is
being
built

223

224

225

Photograph by Bruce Halgren of NedPower/Shell wind energy project along Allegheny Front in Grant Co., WV – September 29, 2008





Photograph by Bruce Halgren of NedPower/Shell wind energy project along Allegheny Front in Grant Co., WV – September 29, 2008





215

216

217

218

Photograph by Bruce Halgren of NedPower/Shell wind energy project
along Allegheny Front in Grant Co., WV – September 29, 2008





Photograph by Bruce Halgren of NedPower/Shell wind energy project
along Allegheny Front in Grant Co., WV – September 29, 2008

