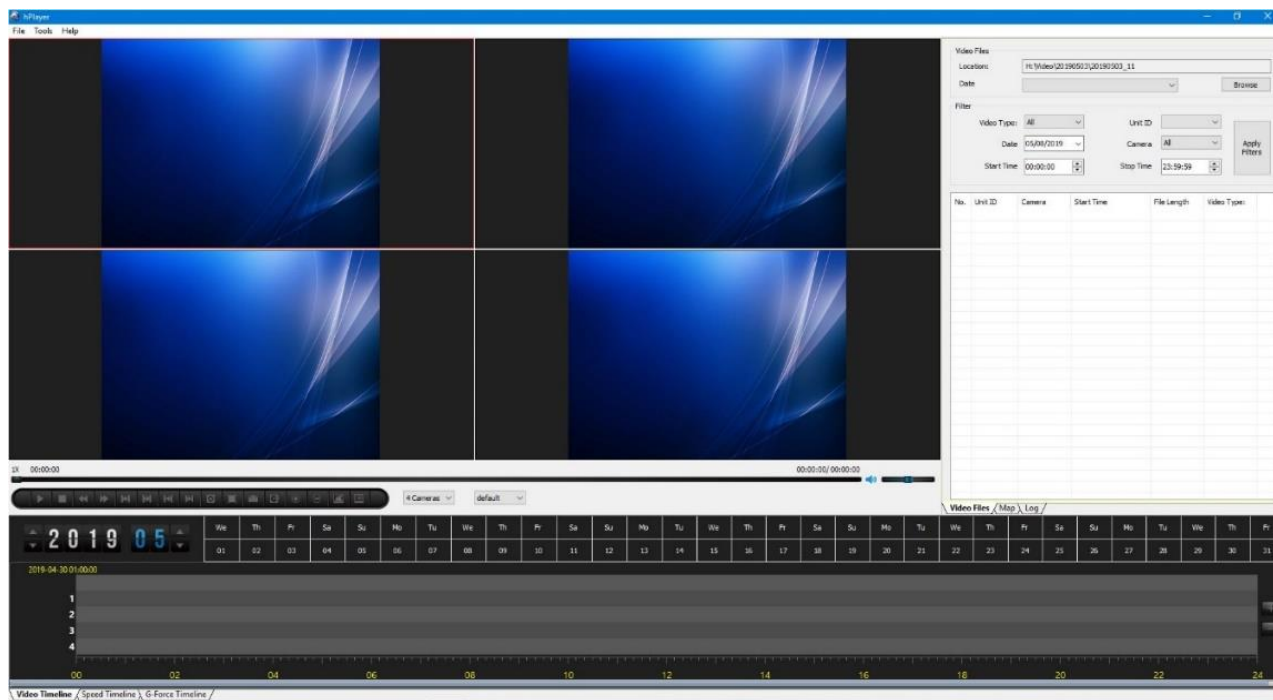


D4M Mobile Video Recorder

HDD Reader; hPlayer PC Software





Instructions for hPlayer PC Software and HDD Reader

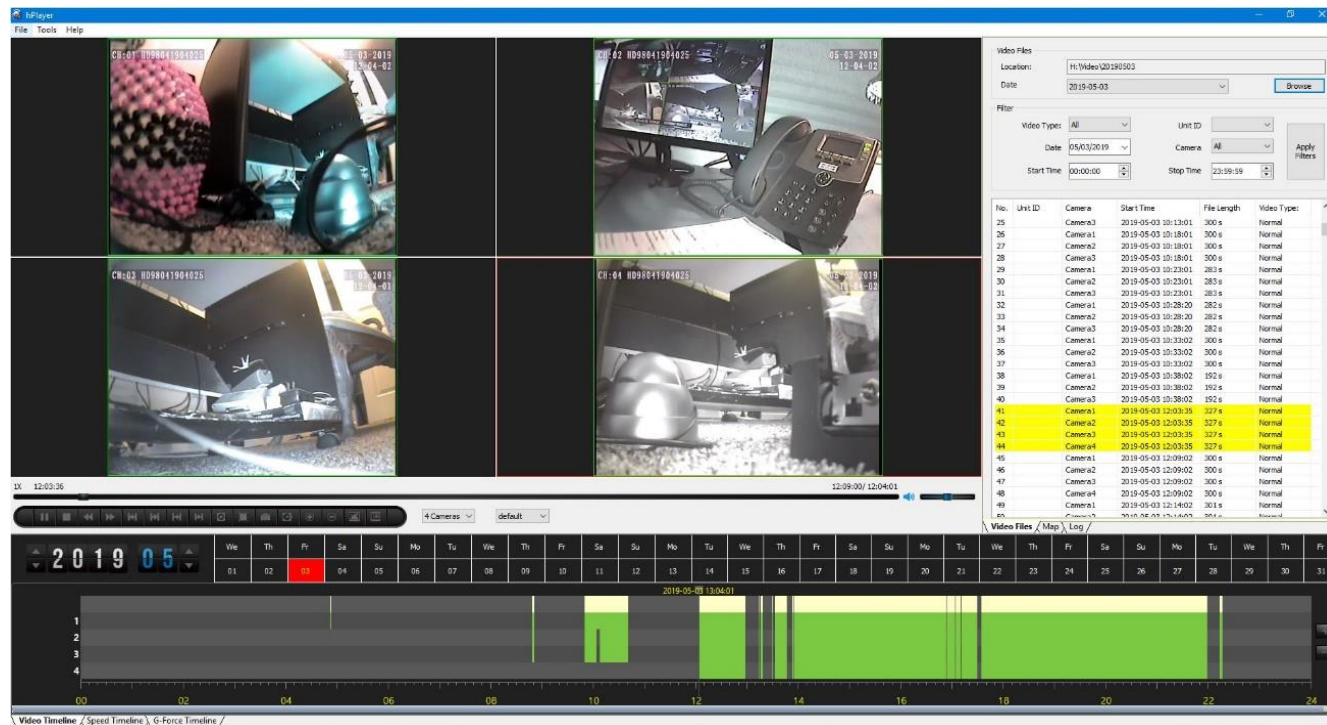
Content

Local player software	3
1.1 Function and interface.....	3
Local player software Installation (Windows 7, 8, 10)	4
1.2 hPlayer Software Installation / Setup wizard.....	4
Retrieving a HDD and attaching the HDD Reader	6
1.3 SSD/HDD Sled Removal (Sled is also known as SSD, HDD, or Cartridge)	6
1.4 HDD Reader (SATA to USB).....	6
1.5 hPlayer tools (setting first).....	7
1.6 hPlayer opening a file or browsing the HDD.....	7
1.7 Player Controls.....	8
Saving a File to your PC	9
1.8 Backing up a File	9
GPS Options.....	10
1.9 GPS Map	10

1.1 Function and interface

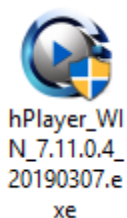
● Function

- The player can simultaneously play 4-channel video files
- Backup to save (export) up to 4 video streams into one composite video
- Time line search; by day hour and minute
- Includes selectable Audio stream (if built into camera)
- Includes GPS Mapping display (if optional GPS is attached)



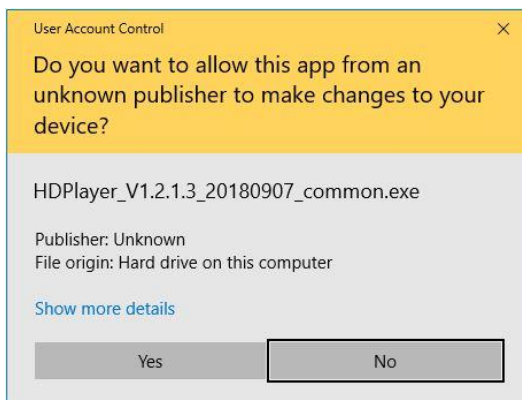
Local player software Installation (Windows 7, 8, 10)

1.2 hPlayer Software Installation / Setup wizard

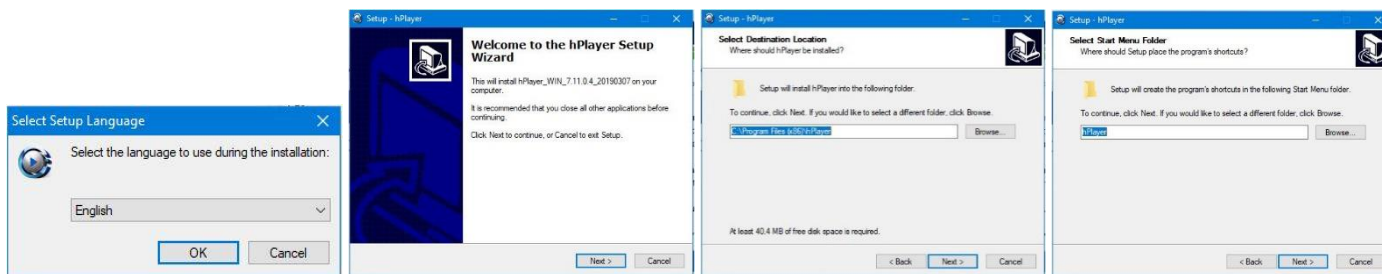


Please refer to the following illustrations:

1. Double left-click the .exe file
2. The following flyout(s) may appear as Windows may not recognize the software manufacturer
 - Select show more details (if interested),
 - then click Yes to allow this App to make changes to your device (for installation to PC registry)



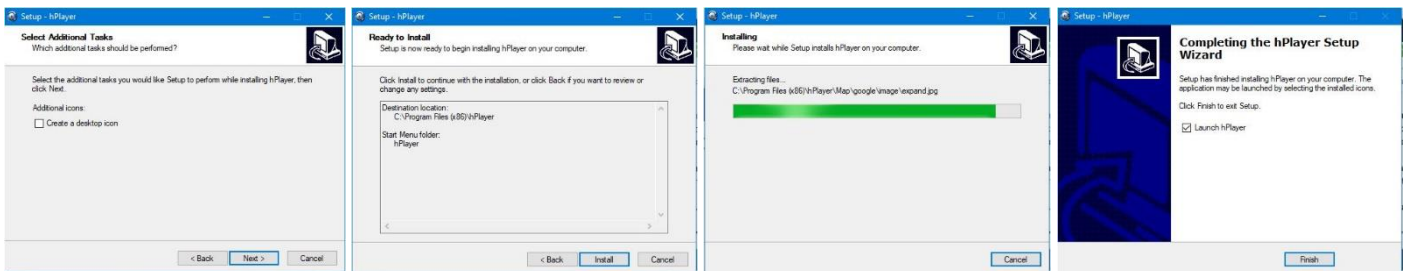
3. The next window(s) appear announcing the installation of the HD Player and confirming the location of the installation folder into your PC; Select Next (or change the location and select Next)



4. Accept the program folder location and creation; click Next and check to a Program Shortcut added to your Start Menu Folder

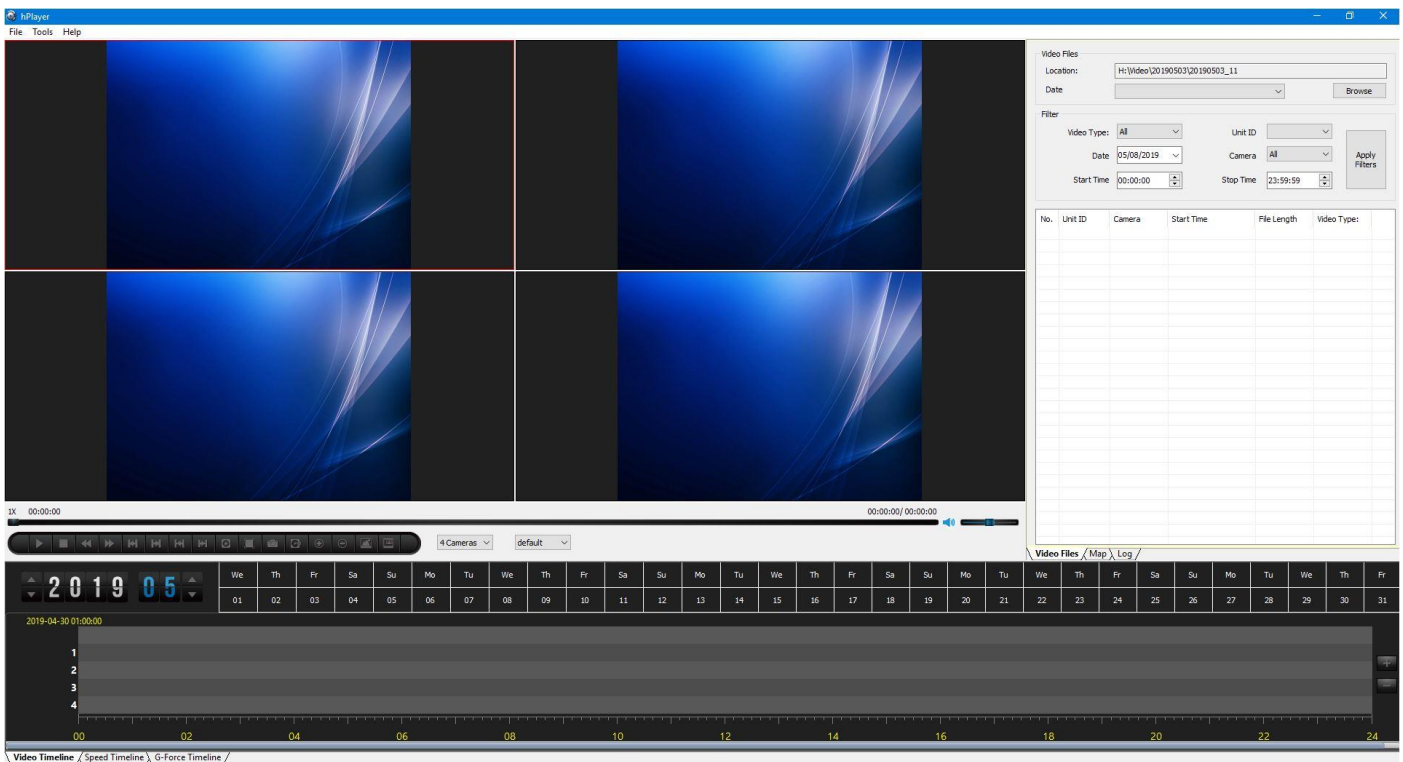
5. The following screens will appear;

- add a Desktop Icon
- show the program location
- start the Installation
- finish and open hPlayer Software



Player interface

hPlayer will start and display the following interface:



Retrieving a HDD and attaching the HDD Reader

Next you will need to connect a removeable HDD from the D4M Mobile Video Recorder to the PC to search and view on the hPlayer software...



1.3 SSD/HDD Sled Removal (Sled is also known as SSD, HDD, or Cartridge)

- Make sure the key lock is rotated Vertical to the deck (unlocked)
- Grasp the HDD and pull from the deck
 - At this point you may insert a spare HDD into the deck, so the vehicle can stay in service

1.4 HDD Reader (SATA to USB)

- Make sure the key lock is rotated Vertical to the deck (unlocked)
- Grasp the HDD and pull from the deck
 - At this point you may insert a spare HDD into the deck, so the vehicle can stay in service
- On a stable flat surface connect the HDD to the USB-SATA HDD Reader (make sure you line up the connections)
- Plug the "straight USB cable" into the PC with the hPlayer Software installed
 - Note: the second (thin USB cable) is for those connections where the USB hub does not supply enough power to the attached Reader and HDD, you may need to plug both in for extra power)



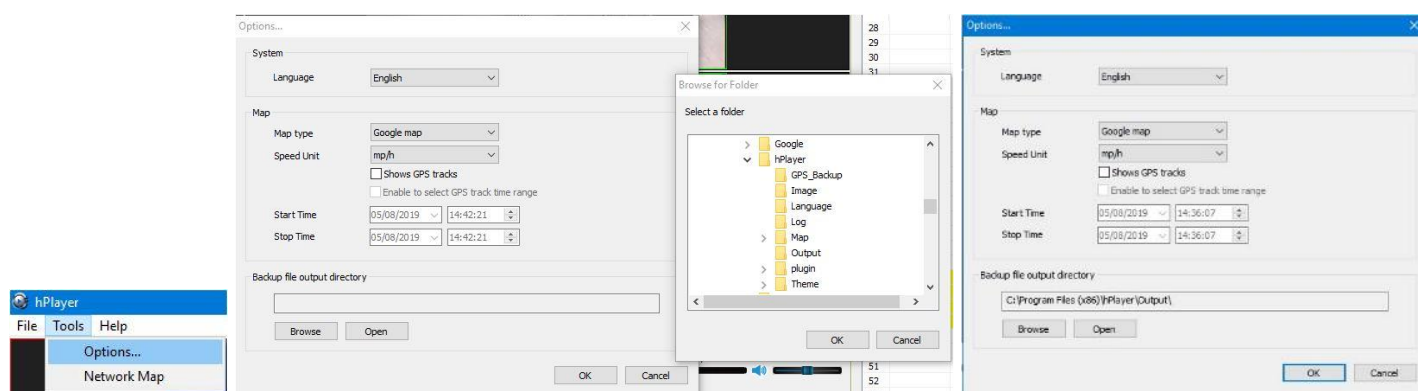
1.5 hPlayer tools (setting first)

On the open player, select the Tools>Options menu from the top right-hand side of the screen

- select Language
- Select Google Maps for USA
- Select MPH for USA

Make a selection for the back-up location

- Select Browse
- Navigate to c:\Program Files (or x86)\hPlayer\Output
 - This will be the location for all videos when backing up a video from the software/HDD
- Confirm the location is displayed as selected in the directory box and click OK

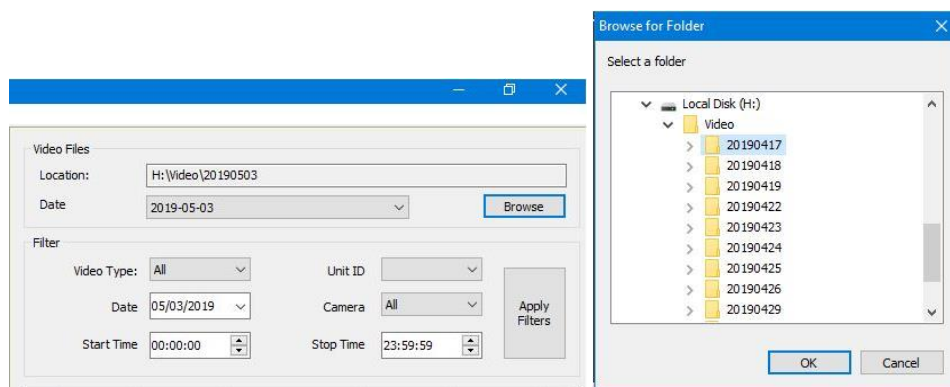


1.6 hPlayer opening a file or browsing the HDD

Click the Browse button on the top right of the screen and choose a file path. All video files under this directory will be listed in the file list by YYYY MM DD

Select the folder you wish to list, then hit OK

Note: - Typically, the external HDD Reader (when plugged in) will appear as a new “drive letter” in your “Computer” list





The folder list will now populate the hPlayer video window

- select any grouping of cameras at the same time by double clicking the time of the group and up to 4 camera will display in the player window
- the video segment will begin to play

The screenshot displays the Idrive software interface. On the left, a 'Video Files' panel shows a list of video files with columns for No., Unit ID, Camera, Start Time, File Length, and Video Type. The list contains 23 entries, mostly from Camera 2. The main window shows a multi-camera playback view with four camera feeds. On the right, a 'Video Files' panel shows a list of video files with columns for No., Unit ID, Camera, Start Time, File Length, and Video Type. The list contains 23 entries, mostly from Camera 2. Below the video feeds is a timeline and a 'Video Files / Map / Log' panel.

1.7 Player Controls

Mouse over the Player Controls for feature identification

Note: not all features are available (even if clickable)



The drop downs select;



Cameras

how many cameras display on screen simultaneously (select4)

Default

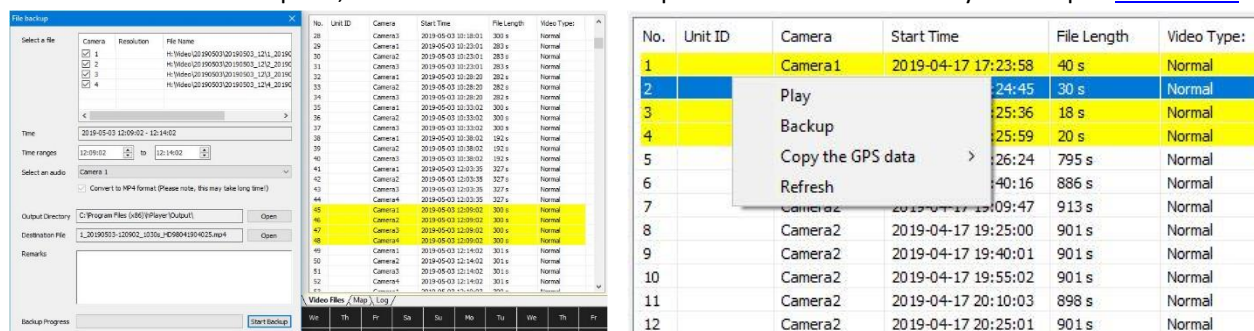
Audio channel you wish to listen to during playback (assuming your cameras have a built-in microphone)

Saving a File to your PC

1.8 Backing up a File

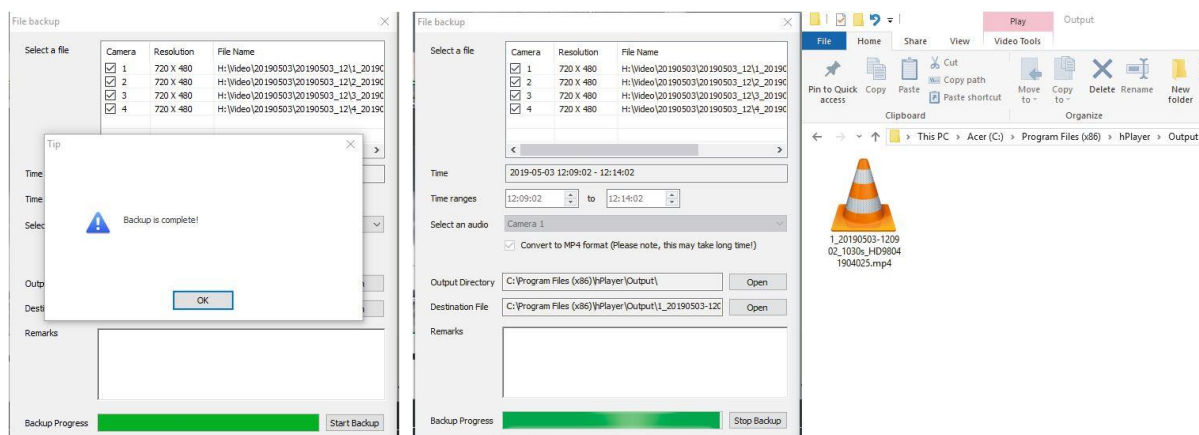
After viewing a video grouping and you wish to backup (copy) up to 4 channels into a single video

- Right click the selected files from the options menu on the right
- Select the Backup option and hPlayer will process and combine up to 4 camera videos into a single composite stream
- When Complete, the file will be saved in the preset folder location that you set up in [section 1.5](#)



No.	Unit ID	Camera	Start Time	File Length	Video Type:
1		Camera1	2019-04-17 17:23:58	40 s	Normal
2		Play	24:45	30 s	Normal
3		Backup	25:36	18 s	Normal
4		Copy the GPS data	25:59	20 s	Normal
5		Refresh	26:24	795 s	Normal
6			40:16	886 s	Normal
7		Camera2	2019-04-17 19:09:47	913 s	Normal
8		Camera2	2019-04-17 19:25:00	901 s	Normal
9		Camera2	2019-04-17 19:40:01	901 s	Normal
10		Camera2	2019-04-17 19:55:02	901 s	Normal
11		Camera2	2019-04-17 20:10:03	898 s	Normal
12		Camera2	2019-04-17 20:25:01	901 s	Normal

- When the Backup is completed, the exported mp4 file will open and play with your Media Player on your PC
 - It is recommended to open mp4 files with the free open source video player “VLC Media Player”
 - Go to <http://www.videolan.org/>



Tip: Backup is complete!

File backup window showing the backup progress bar at 100% and the 'Start Backup' button.

File explorer showing the resulting mp4 file: 1_20190503-120902_1030x_4096x41904025.mp4.



GPS Options

1.9 GPS Map

If you are using the optional GPS Modules attached to the D4M Video Recorder, then GPS mapping will be available in the player if you select the Map tab at the bottom of the right options menu

