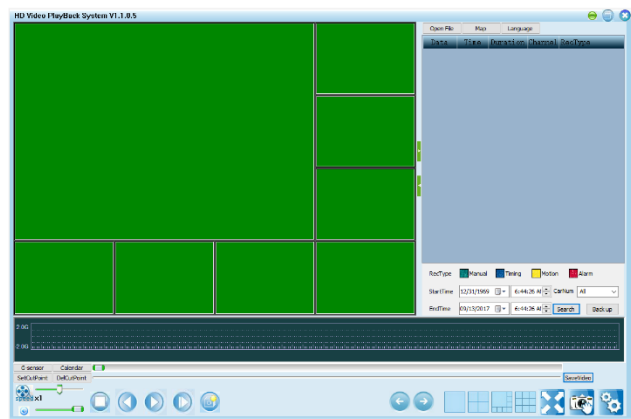




Idrive D8



HDD Reader; PC Software



Idrive Support; email support@idriveglobal.com • 805 273-4196

Instructions for MS Show PC Software and HDD USB Reader

Content

Local player software	3
1.1 Function and interface.....	3
1.1 MS Show Player Software Installation / Setup wizard.....	4
1.1 SSD/HDD Sled Removal.....	5
1.1 HDD Reader (SATA to USB) HDD Reader back side :	6
1.2 Video Player PC Software	8
1.2 G-Sensor three-dimensional acceleration curve	9
1.3 GPS Map	10
1.4 Calendar.....	10
1.5 Video clipping	10
1.6 Video format conversion (MSV to AVI)	10
1.7 Fast motion Viewing	11
1.8 Page Turning capability.....	11
1.9 Settings	11

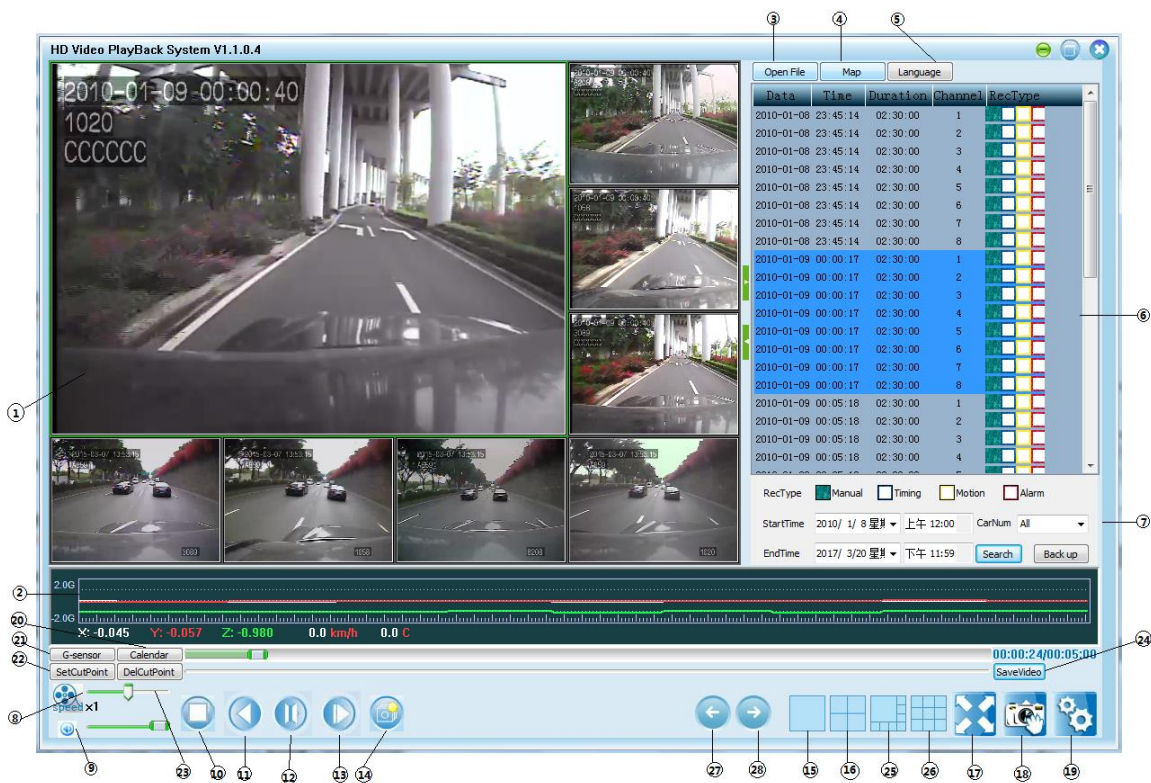
Local player software

1.1 Function and interface

● Function

The player can simultaneously play 8-channel video files with G-sensor three-dimensional acceleration, compartment temperature, speed and GPS information. The player supports to capture channel picture and the user can conveniently drag and drop any channel view.

- Running track can be displayed on Google Map.
- Calendar function supports to show whether or not the video is recorded within a month. Click on the calendar, and the video can be played from the time you click. User can easily check the video through this function.
- A video clip can be cut from the original video and saved as an AVI file.
- "MSV", which can save GPS, temperature and other data while saving the video, is our proprietary video file format. To convert to AVI format, user can use the method of video clip and select the whole video.
- The player can run on Win10, Win8, Win7 and Windows XP.



① Video display area (8 split screens)

② G-Sensor display

③ Open file

④ Google map

⑤ Language switch

⑥ File list

⑦ File Search area

⑧ Speed : 1/16x ~ 16x

⑨ Volume

⑩ Stop

⑪ Pause

⑫ Play

⑬ Single frame play

⑭ Seconds play

⑮ Single screen

⑯ Four split screens

⑰ Full screen

⑱ Snapshot

⑲ Setting

⑳ Calendar

㉑ G-Sensor

㉒ Set Cut Point

㉓ Del Cut Point

㉔ Save Video

㉕ 8 split screens

㉖ 9 split screens

㉗ Previous page

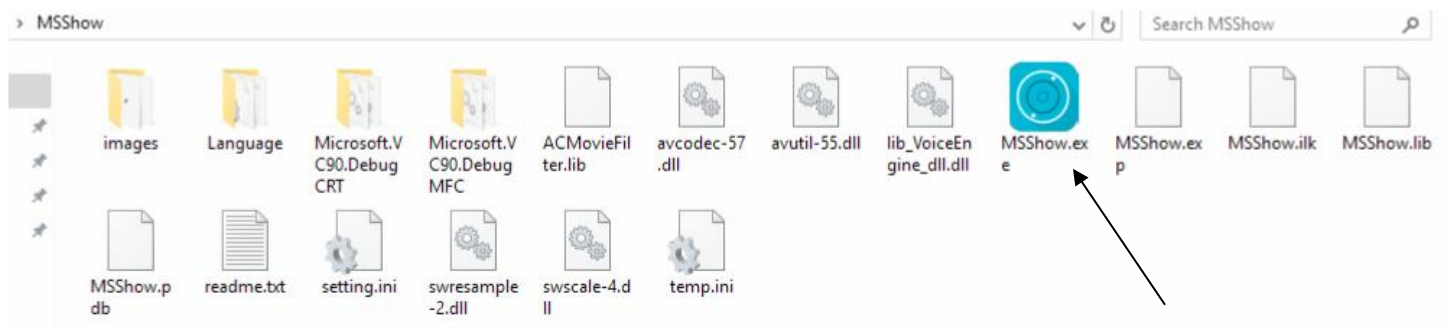
㉘ Next page

1.1 MS Show Player Software Installation / Setup wizard

Please refer to the following illustrations:

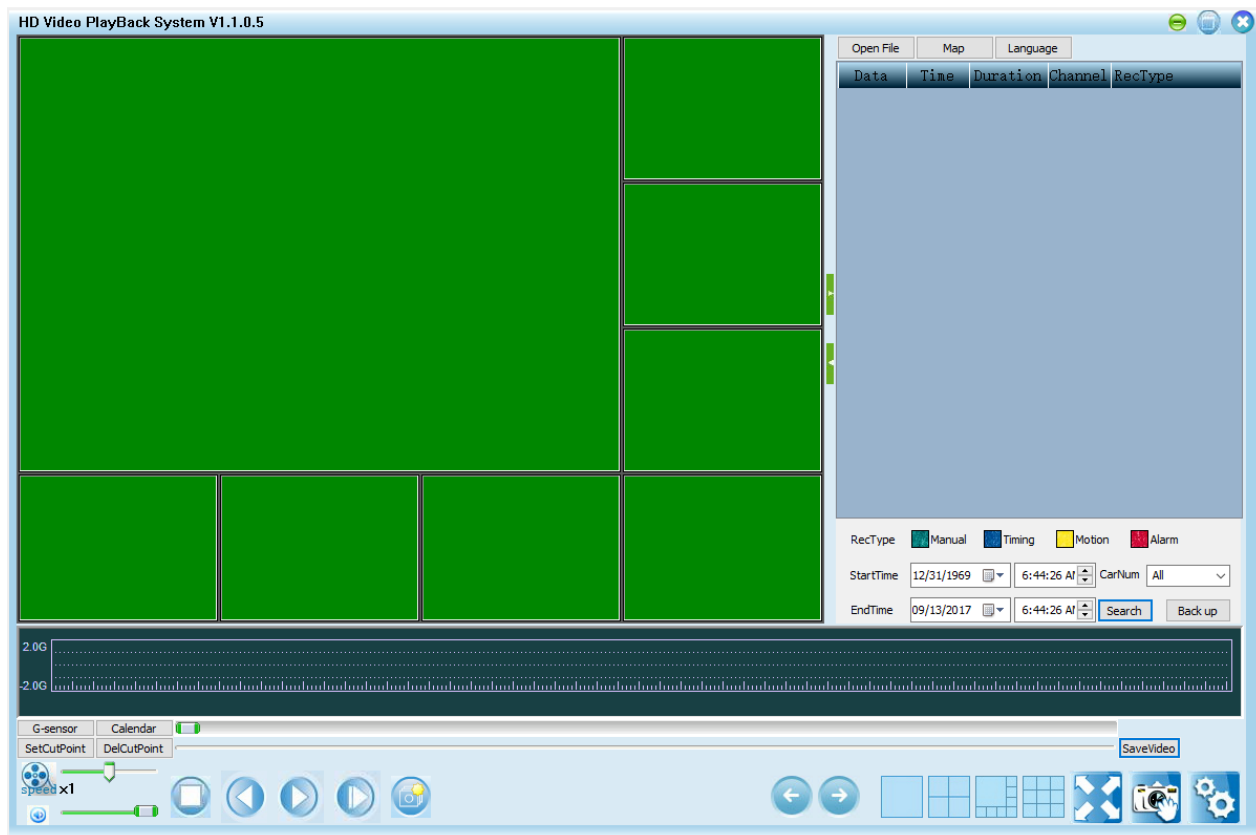


1. Right Click the zipped file for MSShow.zip; then select Extract All
2. Select a location for the destination **folder** "MSShow" – this is where the software will launch from; then hit "EXTRACT"
3. Inside the extracted folder is an Executable for "MSSHow.exe"
5. If you choose you can move the MSSHOW FOLDER to another location on the PC (instead of the desktop); just make a shortcut link to the MSSHOW.EXE for the desktop
4. Double left click the MSShow.exe and the software will start



Player interface

Run "MSShow.exe", it will display the following interface:



Retrieving a HDD to attach to the HDD Reader

Next you will need to connect a removeable HDD to the PC before anything is viewable on the MSSHow software...

1.1 SSD/HDD Sled Removal

Step 1: Make sure the lock is OPEN, open the two ears of the front panel, and pull down the front plate.



Step 2: Pull the hard disk case from the DVR by the ring.



1.1 HDD Reader (SATA to USB)



HDD Reader back side :

Note: DC Power Connector – Supply Power 12VDC

When using the USB HDD Reader connected to the front panel of a PC (or always when using a laptop), you need to supply power via the 12VDC power adapter.

When using the USB HDD Reader connected to the back panel of a PC, power typically is provided via the PC

USB 2.0

Red LED: Powered ON
Green LED: Reader is functioning

Reader front side :



HDD Reader and HDD Sled connected:

Note: Always connect a HDD Sled to the HDD Reader while both devices are on a stable flat surface so the pins connect in perfect alignment; otherwise pin damage can occur on the HDD Sled.



1.2 Video Player PC Software

The player can display 8-channel AVI/MSV video files at 8 split-screens simultaneously. During playback, user can drag the video to any channel according to their habits. Settings of playback include speed, stop, pause, play, single frame play and seconds play.

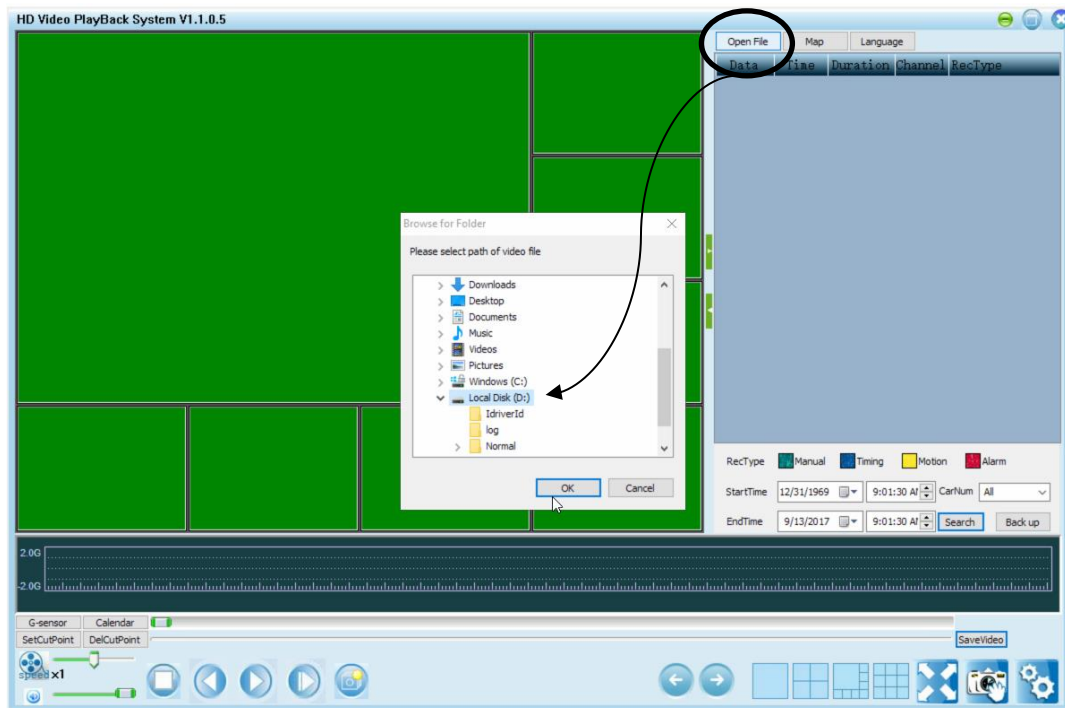
- **Open file**

Click the “OpenFile” button and choose a file path, all video files under this directory will be listed in the file list.

Select the HDD location, then hit OK

Note: - Typically, the external HDD Reader will appear as a new “drive letter” in your “Computer” list.

- Don't change the video file's name.



- **File Search**

Search the video files within the scope of specified time, video type, license plate number etc.

E.g. in the search area, if choose...

- manual recording type
- start date as 2017-9-01 and end date as 2017-9-12
- license number as ALL
- click the "search" button

all the recording files which meet the conditions will be displayed in the file list window.

- **Play**

Double-click the video file.

- **Snapshot**



During playback, press the "Snapshot" button to capture instant video images of the selected channel and save them to the default file path.

- **Single screen & multi screens**

During playback, it will change to single screen when you choose and double-click one channel.

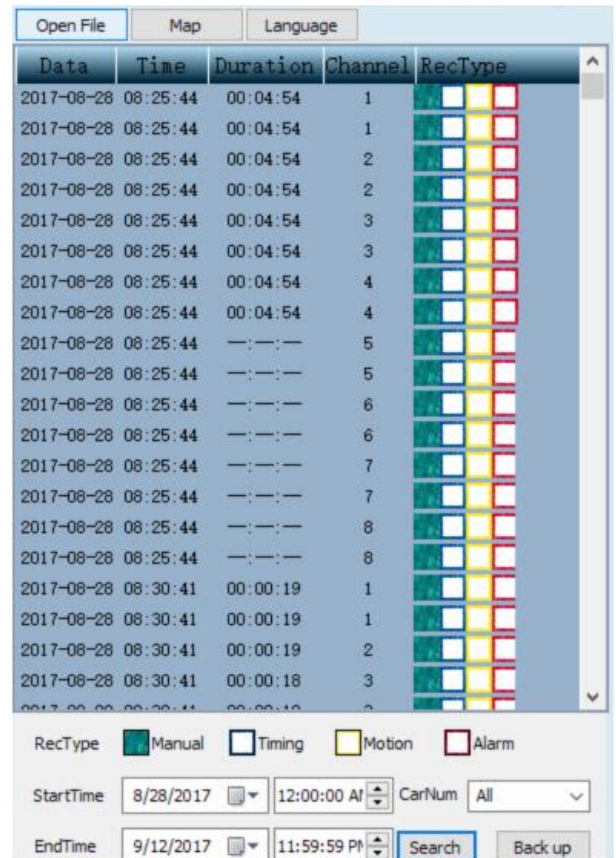
After double-click again, it will revert to multi screens (4/8/9 screens).

- **Drag and Drop**

Press and hold the left mouse button, drag a channel to the position of any other channels, and the two channels can be interchanged.

- **Audio**

Specify the sound of one channel to be played. Setting method: In the video display area, click the right mouse button, select "Audio 1" on the pop-up context menu, then the audio of Channel 1 will be played.

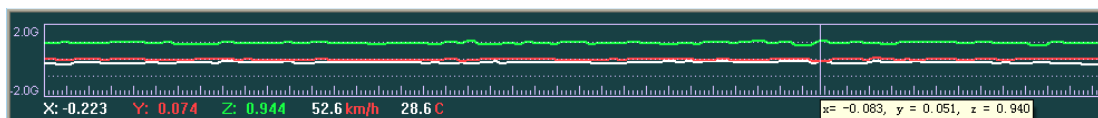


1.2 G-Sensor three-dimensional acceleration curve

Display the x, y, and z axis acceleration. White line is x-axis, red line is y-axis and green is z-axis, which displays the current point to the x, y and z values.

It can also display the cursor's x, y and z values.

Double-click G-sensor area, it will be enlarged, and easy to observe.



1.3 GPS Map

While playing a video with GPS data, click "Map" button, GPS routes on the Google map will show.

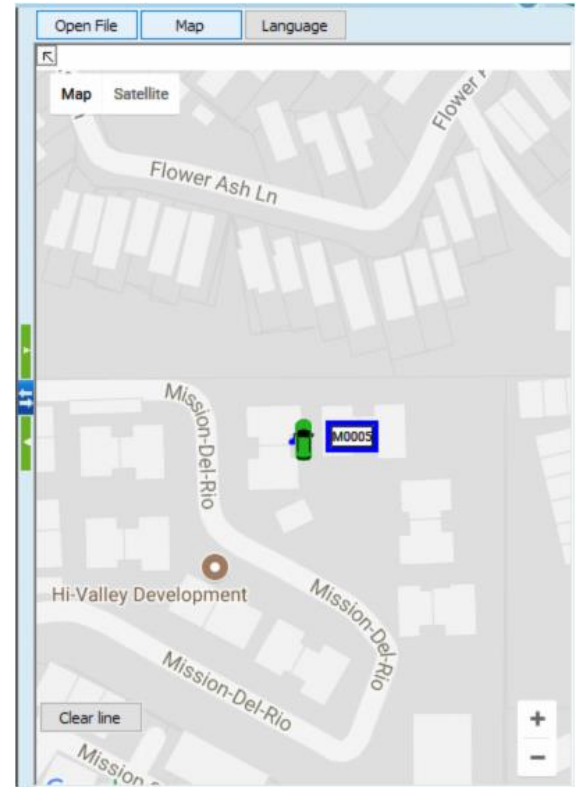
Satellite mode map is recommended.

For easy viewing of videos and maps, the player supports 3-level window enlargement.

If you click the icon "🔍", the map will be enlarged, and if click the icon "🖼️", the map will be maximized.

NOTE: if you receive this Google Maps JavaScript API error, simply click DISMISS and it will not interfere or return during this session.

You are using a browser that is not supported by the Google Maps JavaScript API. Consider changing your browser. [Learn more](#) [Dismiss](#)

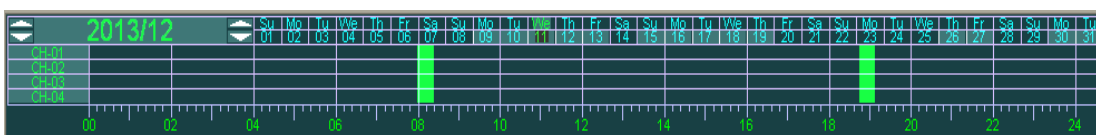


1.4 Calendar

Click on the "Calendar" button to display calendar chart, select the month and year to display the DVR (4 channels) in the video of that month, the background color of those dates having video files will be grayed out; it can easily view video files date.

Click on one of the days, recording situation of the 4-channel DVR will be displayed on the chart. Move the mouse to the bottom hour zone of the calendar and click your left mouse button, you can zoom hour time bar.

Click on the calendar of the video, the video can be played from the time you click. User can easily check the video this way.



1.5 Video clipping

A video clip can be cut from the original video and saved as an AVI file.

NOTE: Video Clips will only be of a single video stream from which ever camera is selected prior to performing steps below...

1. During video playback or pause time click "SetCutPoint" button to select the starting point
2. Click "SetCutPoint" button again to select the end point, then a video will be selected.
3. If you re-select it, click on "DelCutPoint" button to undo, and re-select.
4. Click "SaveVideo" button to save the clipped video files in AVI format.



1.6 Video format conversion (MSV to AVI)

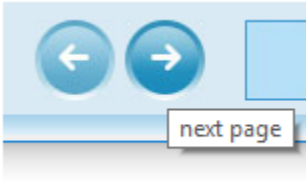
By selecting video clipping function and select the whole video, click "Save Video" button, files will convert to AVI automatically.

1.7 Fast motion Viewing



Selecting this icon while viewing a video will cause the player to accelerate each minute to approx. 1 second for fast viewing. Pressing the Pause Button, then pressing Play again will return the video to normal speed

1.8 Page Turning capability



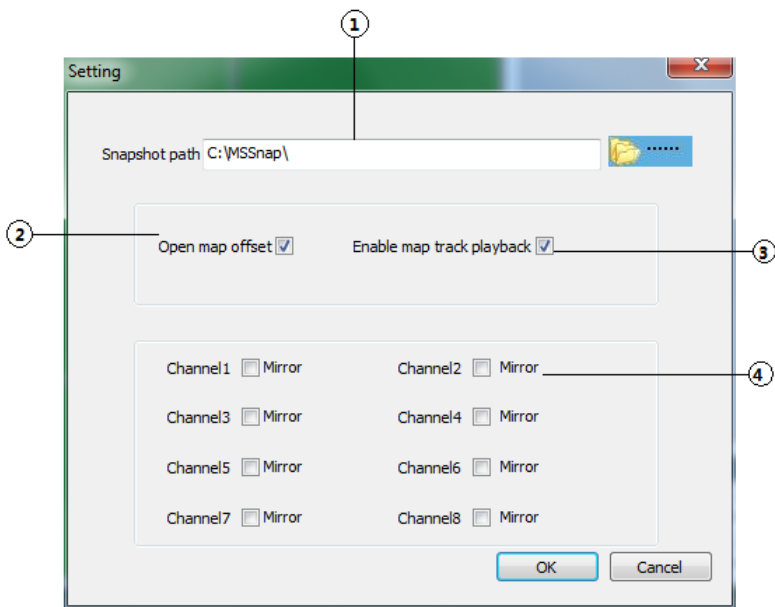
Page turning capability can be used under single screen or 4 spilt-screens only. Under single screen, you can press "Previous page" to show the video of previous channel and press "Next page" to show the video of next channel. If under 4-screens, you can press "Previous page" to show the videos of previous 4 channels and press "Next page" to show the videos of next 4 channels. The first channel video will be displayed if you press "Next page" while playing the video of the last channel and vice versa. The same goes for 4 spilt screens.

1.9 Settings

Click the Settings Icon



- ① Snapshot path
- ② Open map offset
- ③ Enable map track playback
- ④ Mirror image



● Settings introduction

Snapshot path: Determine the file path of the snapshot to be saved. The snapshot will be saved under this file path when you click "Snapshot" button on the main interface.

Open map offset: Map correction function is effective only in China, and invalid abroad.

Enable map track playback: The map tracks of the videos on the file list will be displayed on the map when this function is on. During playback, the map route that has been passed and the map route that has not passed are displayed in different colors.

Mirror: After select the mirror checkbox of each channel, the original video image will be rotated 180 degrees along the axis perpendicular to the ground.