



Idrive SDVR and AI Camera; IRIS Video Request Quick Reference Guide

Request DVR **NEW!**



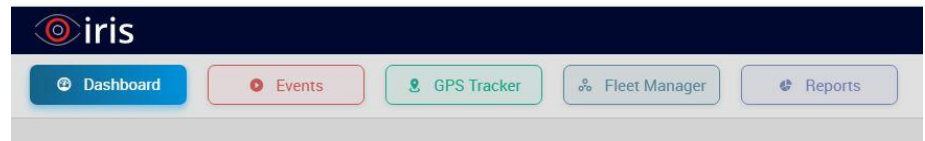
The **Idrive AI** (Artificial Intelligence) **Camera** together with an associated **Idrive SDVR** (4 or 8 Channel)



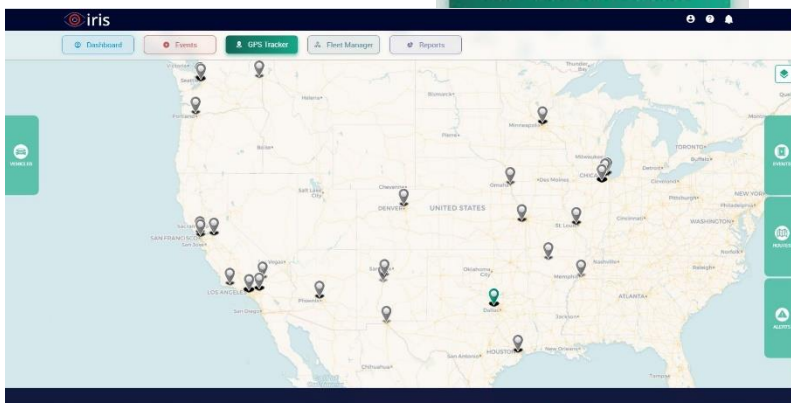
- can be remotely requested to transfer video through the Idrive online web portal **IRIS**



Sign into the online Idrive IRIS platform at
<https://iris.idriveglobal.com/>



Then on the top menu select -



As a permitted user, you can

- see your fleet of machines in real time
- perform an SDVR request from GPS Tracker
- track vehicle length of time used
- view any EVENTS that were transferred
- make Video Requests

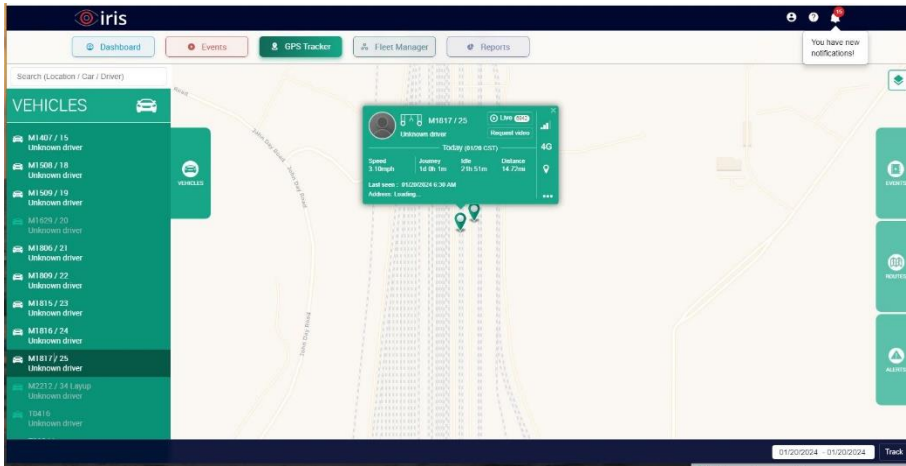
Idrive Technical Support is available Mon- Fri 8AM EST – 4PM PST (except major US Holidays)

support@idriveglobal.com

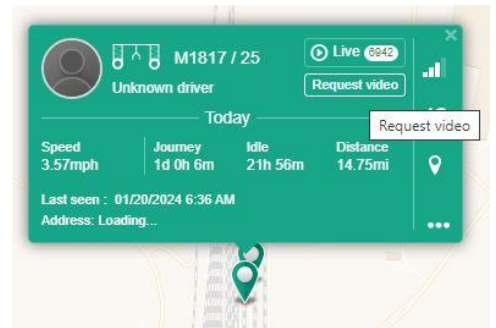
805 273-4196

Making a Video Request from an AI and SDVR

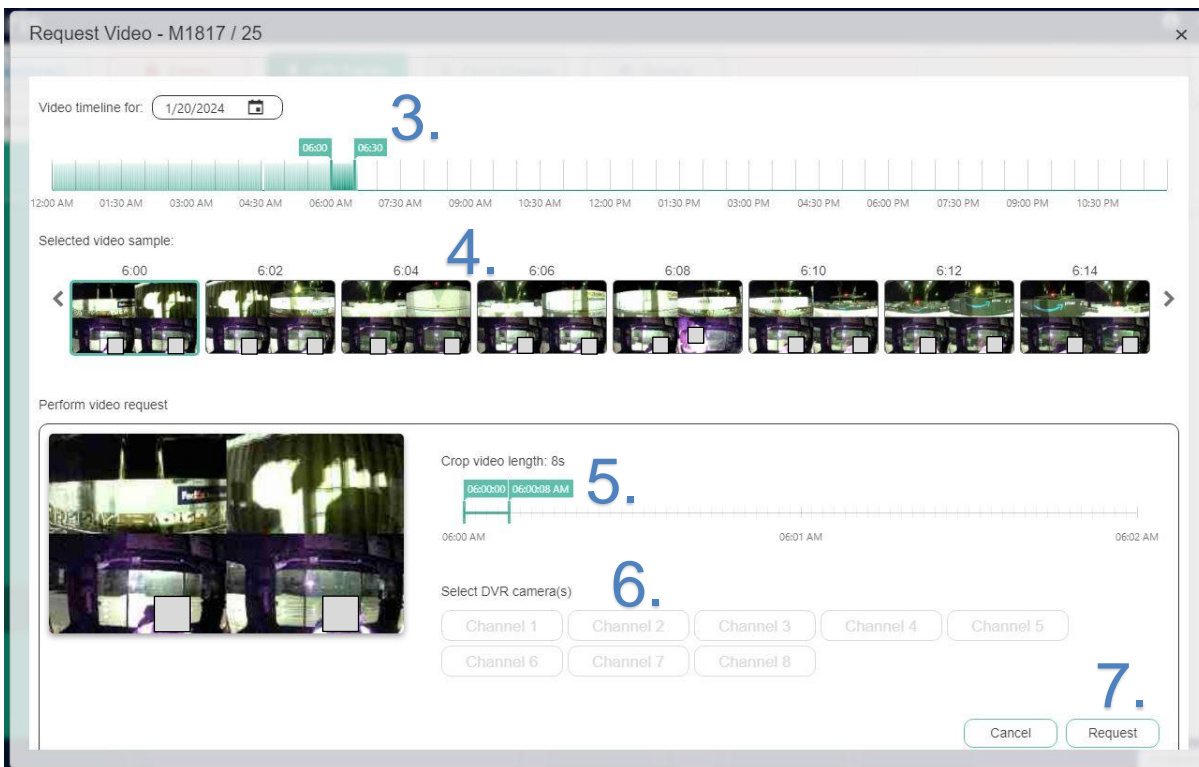
1. From the left menu Vehicles flyout



2. On the specific vehicle flyout, click on Request Video to open the next window

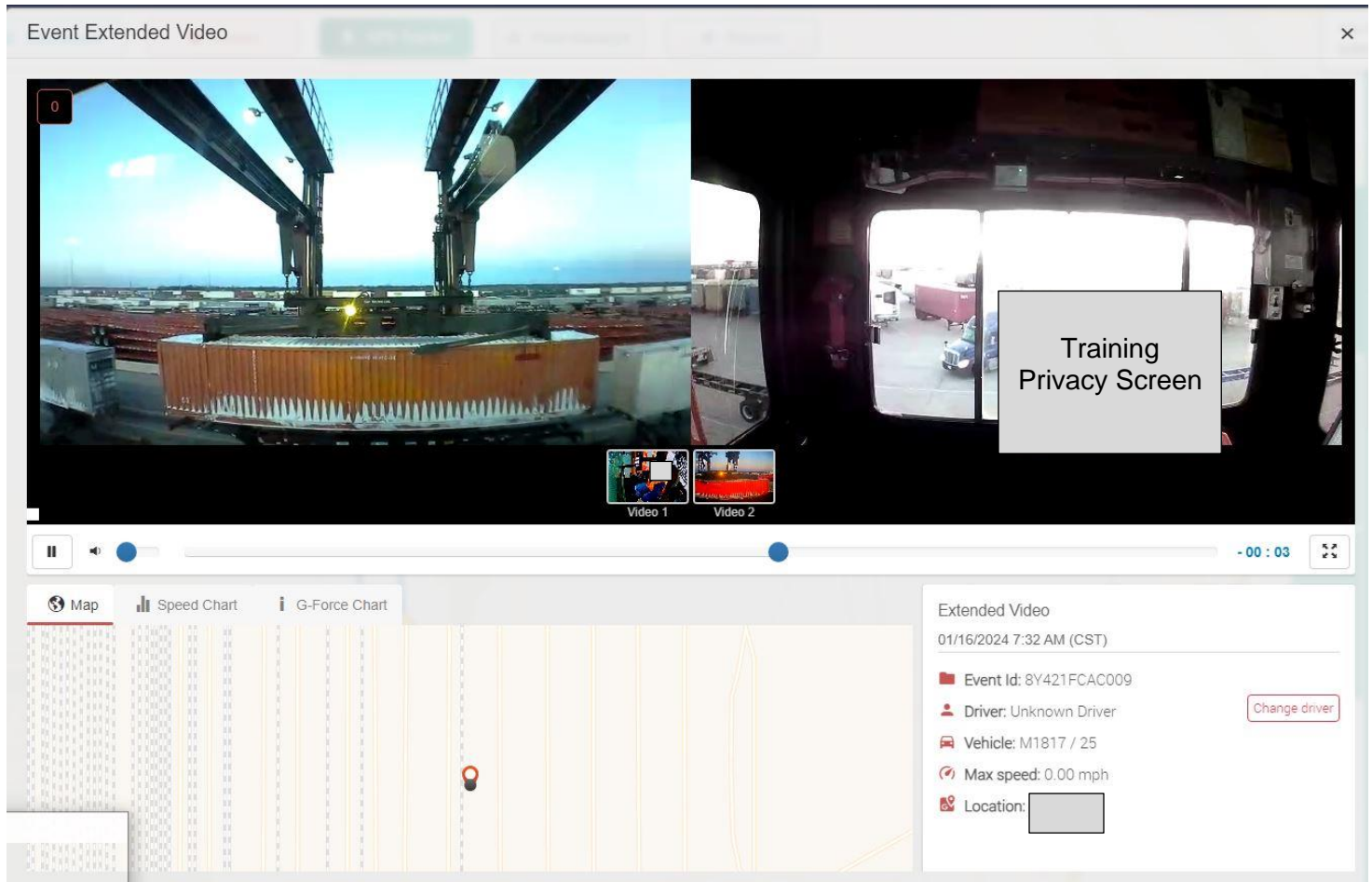


3. Drag the upper timeline to the 30 min windows you are looking for
4. Navigate through the "Selected Video Samples" for the specific 2 min interval window
5. Crop the Video Length is preset for 8 seconds (longer videos take longer to transfer via cellular)
6. Select the Video Channel(s) to request
7. Click on Request



Note: When the camera and SDVR are online it may take a few minutes until you get the video event.

- After the video is loaded it will play in the same pop-up window and then you can go back to the 'Request video' so you can make other requests.
- To switch to the video from DVR, click on small thumbnails under the larger video



Note: If the AI Camera and SDVR are offline, you will get the following message:

Request performed. At the moment camera is offline, you will be notified when the event is uploaded

Idrive Technical Support is available Mon- Fri 8AM EST – 4PM PST (except major US Holidays)

support@idriveglobal.com

805 273-4196