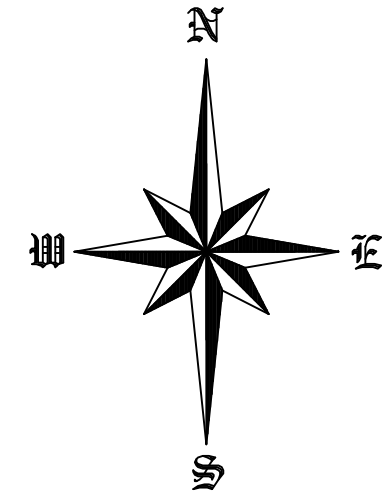


# BOULDER RIDGE SIXTH ADDITION

PART OF THE NW 1/4 OF  
SECTION 16, TOWNSHIP 139 NORTH, RANGE 80 WEST OF THE 5TH PRINCIPAL MERIDIAN, BURLEIGH COUNTY,  
BISMARCK, NORTH DAKOTA



UNITS SCALE: 1"=60'  
MAY 10, 2013  
DATUM: NGVD 1929

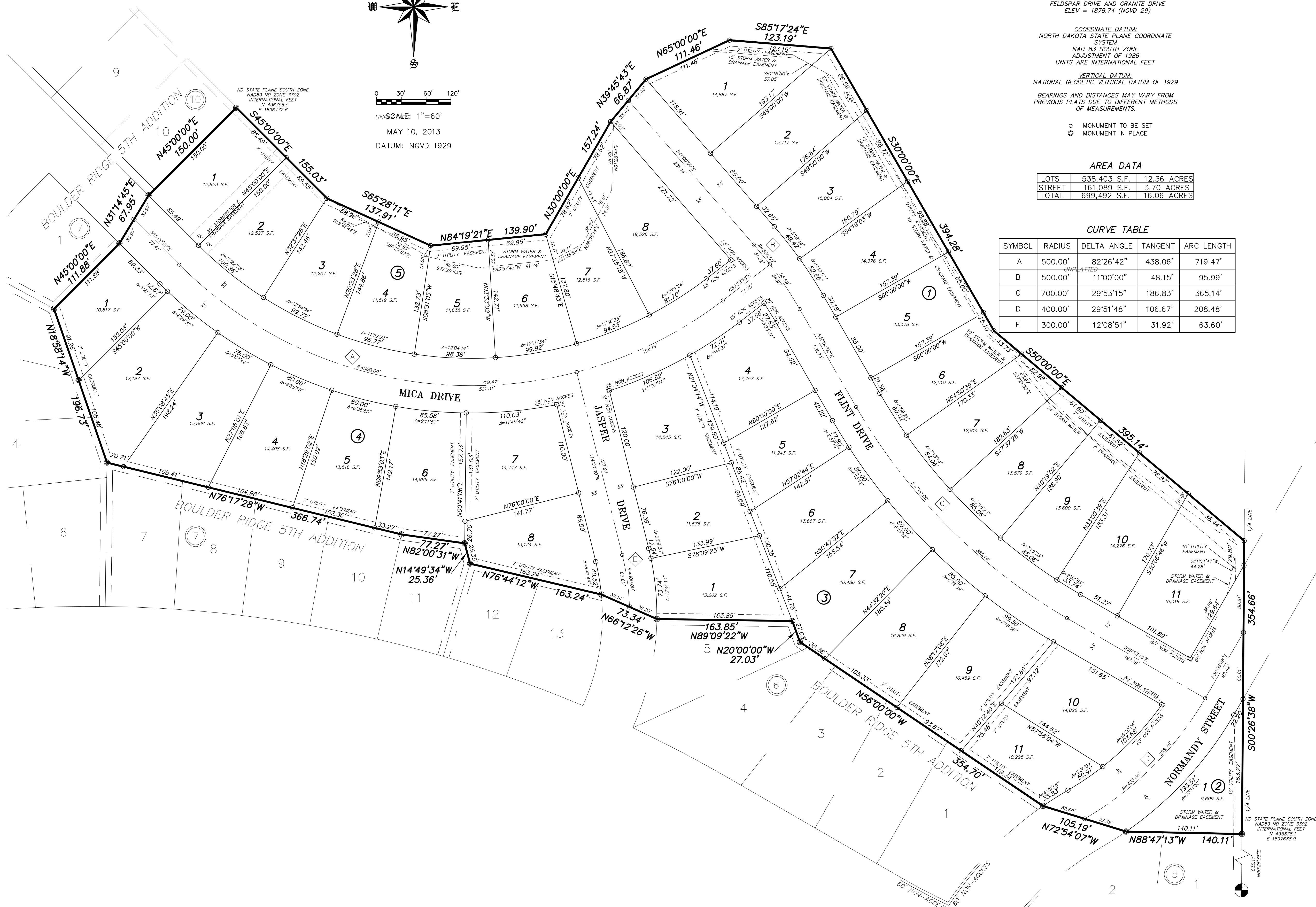
**NOTES**  
BASIS OF BEARING:  
NORTH DAKOTA STATE PLANE, SOUTH ZONE BY  
CITY ORDINANCE  
BENCHMARK:  
HYDRANT#2582 BOULDER RIDGE ROAD BETWEEN  
FELDSPAR DRIVE AND GRANITE DRIVE  
ELEV = 1878.74 (NGVD 29)  
COORDINATE DATUM:  
NORTH DAKOTA STATE PLANE COORDINATE  
SYSTEM  
NAD 83 SOUTH ZONE  
ADJUSTMENT OF 1986  
UNITS ARE INTERNATIONAL FEET  
VERTICAL DATUM:  
NATIONAL GEODETIC VERTICAL DATUM OF 1929  
BEARINGS AND DISTANCES MAY VARY FROM  
PREVIOUS PLATS DUE TO DIFFERENT METHODS  
OF MEASUREMENTS.

**AREA DATA**

LOTS	538,403 S.F.	12.36 ACRES
STREET	161,089 S.F.	3.70 ACRES
TOTAL	699,492 S.F.	16.06 ACRES

**CURVE TABLE**

SYMBOL	RADIUS	DELTA ANGLE	TANGENT	ARC LENGTH
A	500.00'	82°26'42"	438.06'	719.47'
B	500.00'	11°00'00"	48.15'	95.99'
C	700.00'	29°53'15"	186.83'	365.14'
D	400.00'	29°51'48"	106.67'	208.48'
E	300.00'	12°08'51"	31.92'	63.60'



ND STATE PLANE SOUTH ZONE  
NAD83 NO ZONE 3302  
INTERNATIONAL FEET  
N 435876.5  
E 1897688.9