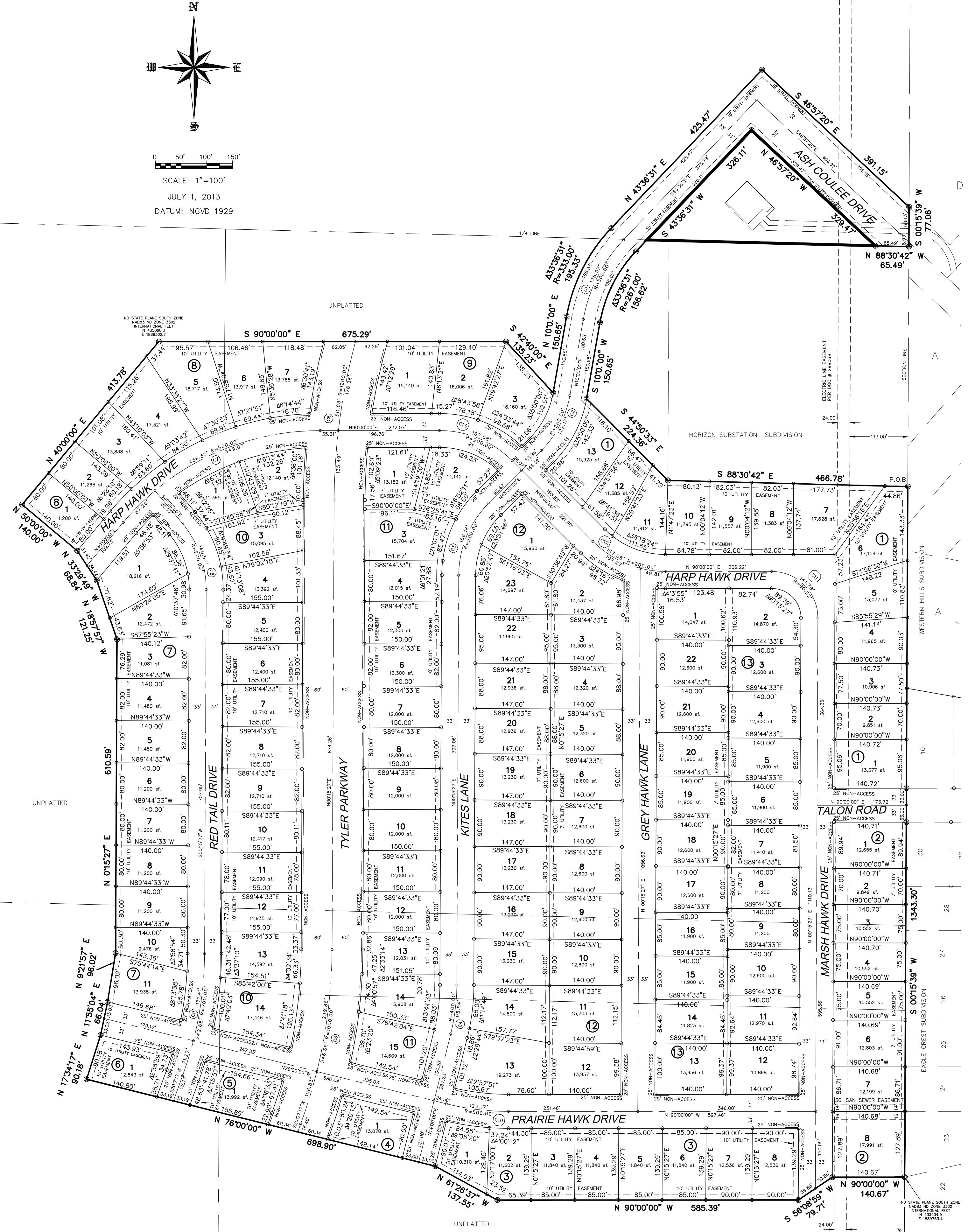
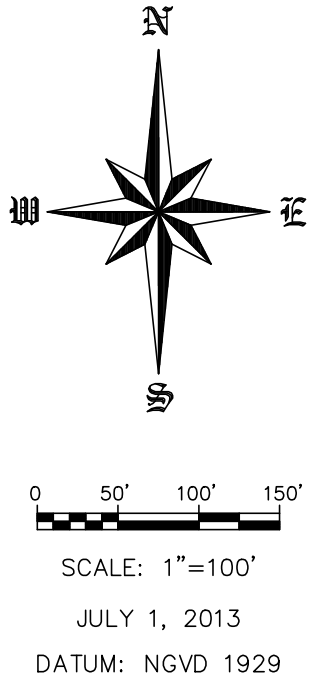


EAGLE CREST SIXTH ADDITION

PART OF THE SE 1/4 AND THE NE 1/4 OF SECTION 18, TOWNSHIP 139 NORTH, RANGE 80 WEST OF THE 5TH PRINCIPAL MERIDIAN,
BISMARCK, BURLEIGH COUNTY, NORTH DAKOTA



NOTES

BASE OF BEARING:
NORTH DAKOTA STATE PLANE, SOUTH ZONE BY CITY ORDINANCE

BENCHMARK:
HYDRANT #2425 EAGLE CREST LOOP
WEST OF GOLDEN EAGLE LAKE
ELEV: 1838.86

COORDINATE DATUM:
NORTH DAKOTA STATE PLANE COORDINATE SYSTEM
NAD 83 SOUTH ZONE
ADJUSTMENT OF 1986
UNITS ARE INTERNATIONAL FEET

VERTICAL DATUM:
NATIONAL GEODETIC VERTICAL DATUM OF 1929

BEARINGS AND DISTANCES MAY VARY FROM PREVIOUS PLATS DUE TO DIFFERENT METHODS OF MEASUREMENTS.

○ MONUMENT TO BE SET
● MONUMENT IN PLACE

AREA DATA

LOTS	1,644,108 S.F.	37.74 ACRES
STREET	775,870 S.F.	17.81 ACRES
TOTAL	2,419,978 S.F.	55.56 ACRES

CURVE DATA

CURVE	DELTA ANGLE	TANGENT	RADIUS	ARC LENGTH
C1	33°36'51"	90.60'	300.00'	176.97'
C2	35°00'00"	63.06'	200.00'	122.17'
C3	44°44'33"	82.32'	200.00'	156.18'
C4	13°44'33"	48.20'	400.00'	95.94'
C5	19°51'50"	175.10'	1000.00'	346.69'
C6	14°53'23"	156.81'	1200.00'	311.85'
C7	50°00'00"	233.15'	500.00'	436.33'
C8	40°15'27"	173.30'	200.00'	140.53'
C9	19°51'50"	122.57'	700.00'	242.68'
C10	14°00'00"	61.39'	500.00'	122.17'
C11	90°15'27"	90.41'	90.00'	141.78'
C12	45°00'00"	82.84'	200.00'	157.08'
C13	45°00'00"	82.84'	200.00'	157.08'

DESCRIPTION

PART OF THE SE 1/4 & THE NE 1/4 OF SECTION 18, TOWNSHIP 139 NORTH, RANGE 80 WEST OF THE 5TH PRINCIPAL MERIDIAN, BISMARCK, BURLEIGH COUNTY, NORTH DAKOTA DESCRIBED AS FOLLOWS:

BEGINNING AT THE SOUTHEAST CORNER OF HORIZON SUBSTATION SUBDIVISION, THENCE SOUTH 00 DEGREES 15 MINUTES 39 SECONDS WEST, ALONG THE WEST LINE OF WESTERN HILLS SUBDIVISION AND EAGLE CREST SUBDIVISION, A DISTANCE OF 1343.30 FEET; THENCE NORTH 90 DEGREES 00 MINUTES 00 SECONDS WEST, A DISTANCE OF 140.67 FEET; THENCE SOUTH 56 DEGREES 06 MINUTES 59 SECONDS WEST, A DISTANCE OF 78.71 FEET; THENCE NORTH 90 DEGREES 00 MINUTES 00 SECONDS WEST, A DISTANCE OF 885.39 FEET; THENCE NORTH 61 DEGREES 26 MINUTES 37 SECONDS WEST, A DISTANCE OF 137.55 FEET; THENCE NORTH 76 DEGREES 00 MINUTES 00 SECONDS WEST, A DISTANCE OF 698.90 FEET; THENCE NORTH 17 DEGREES 34 MINUTES 17 SECONDS EAST, A DISTANCE OF 90.18; THENCE NORTH 11 DEGREES 55 MINUTES 04 SECONDS EAST, A DISTANCE OF 66.04 FEET; THENCE NORTH 09 DEGREES 21 MINUTES 57 SECONDS EAST, A DISTANCE OF 96.02 FEET; THENCE NORTH 00 DEGREES 15 MINUTES 27 SECONDS EAST, A DISTANCE OF 610.59 FEET; THENCE NORTH 18 DEGREES 57 MINUTES 57 SECONDS WEST, A DISTANCE OF 121.25 FEET; THENCE NORTH 33 DEGREES 29 MINUTES 49 SECONDS WEST, A DISTANCE OF 68.84 FEET; THENCE NORTH 50 DEGREES 00 MINUTES 00 SECONDS WEST, A DISTANCE OF 140.00 FEET; THENCE NORTH 40 DEGREES 00 MINUTES 00 SECONDS WEST, A DISTANCE OF 413.78 FEET; THENCE SOUTH 90 DEGREES 00 MINUTES 00 SECONDS EAST, A DISTANCE OF 675.29 FEET; THENCE SOUTH 42 DEGREES 40 MINUTES 00 SECONDS EAST, A DISTANCE OF 135.23 FEET; THENCE NORTH 10 DEGREES 00 MINUTES 00 SECONDS EAST, A DISTANCE OF 150.65 FEET; THENCE NORTHWESTERLY AND TO THE RIGHT ON A 333.00 FOOT RADIUS CURVE, AN ARC LENGTH OF 189.33 FEET; THENCE NORTH 43 DEGREES 36 MINUTES 31 SECONDS EAST, A DISTANCE OF 425.47 FEET; THENCE SOUTH 46 DEGREES 57 MINUTES 20 SECONDS EAST, A DISTANCE OF 391.15 FEET, TO THE EAST LINE OF THE NE 1/4 OF SAID SECTION 18; THENCE SOUTH 00 DEGREES 15 MINUTES 39 SECONDS WEST, ALONG SAID EAST LINE, A DISTANCE OF 77.06 FEET, TO THE NORTHEAST CORNER OF SAID HORIZON SUBSTATION SUBDIVISION; THENCE NORTH 88 DEGREES 30 MINUTES 42 SECONDS WEST, ALONG THE NORTH BOUNDARY LINE OF SAID HORIZON SUBSTATION SUBDIVISION, A DISTANCE OF 68.49 FEET; THENCE NORTH 46 DEGREES 57 MINUTES 20 SECONDS WEST, A DISTANCE OF 329.47 FEET; THENCE SOUTH 43 DEGREES 36 MINUTES 31 SECONDS WEST, A DISTANCE OF 326.11 FEET; THENCE SOUTHWESTERLY AND TO THE LEFT ON A 267.00 FOOT RADIUS CURVE, AN ARC LENGTH OF 156.52 FEET; THENCE SOUTH 10 DEGREES 00 MINUTES 00 SECONDS WEST, A DISTANCE OF 150.65 FEET; THENCE SOUTH 44 DEGREES 50 MINUTES 33 SECONDS EAST, A DISTANCE OF 224.36 FEET, TO THE SOUTHWEST CORNER OF SAID HORIZON SUBSTATION SUBDIVISION; THENCE SOUTH 88 DEGREES 30 MINUTES 42 SECONDS EAST, ALONG THE SOUTH BOUNDARY LINE OF SAID HORIZON SUBSTATION SUBDIVISION, A DISTANCE OF 466.78 FEET, TO THE POINT OF BEGINNING.

THE ABOVE TRACT CONTAINS 55.56 ACRES, MORE OR LESS.

SURVEYOR'S CERTIFICATE

I, TIM LANGERUD, A PROFESSIONAL LAND SURVEYOR IN THE STATE OF NORTH DAKOTA, HEREBY CERTIFY THAT THE ANNEXED PLAT IS A TRUE COPY OF THE NOTES OF A SURVEY PERFORMED UNDER MY SUPERVISION AND COMPLETED ON JUNE 27, 2013, THAT ALL INFORMATION SHOWN HEREON IS TRUE AND CORRECT TO THE BEST OF MY KNOWLEDGE AND BELIEF, THAT ALL MONUMENTS SHOWN HEREON ARE CORRECT, THAT ALL REQUIRED MONUMENTS HAVE BEEN SET, AND THAT ALL DIMENSIONAL AND GEODETIC DETAILS ARE CORRECT.

STATE OF NORTH DAKOTA)
COUNTY OF BURLEIGH)

SWENSON, HAGEN & CO. P.C.
909 BASIN AVENUE
BISMARCK, NORTH DAKOTA

TIM LANGERUD
PROFESSIONAL LAND SURVEYOR
N.D. REGISTRATION NO. 5770

ON THIS _____ DAY OF _____, 2013, BEFORE ME PERSONALLY APPEARED TIM LANGERUD, KNOWN TO ME TO BE THE PERSON DESCRIBED IN AND WHO EXECUTED THE FOREGOING SURVEYOR'S CERTIFICATE AND HE ACKNOWLEDGED TO ME THAT HE EXECUTED THE SAME.

DAVID PATIENCE, NOTARY PUBLIC
BURLEIGH COUNTY, NORTH DAKOTA
MY COMMISSION EXPIRES AUGUST 24, 2016

APPROVAL OF CITY PLANNING COMMISSION

THE SUBDIVISION OF LAND AS SHOWN ON THE ANNEXED PLAT HAS BEEN APPROVED BY THE PLANNING COMMISSION OF THE CITY OF BISMARCK, ON THE _____ DAY OF _____, 2013, IN ACCORDANCE WITH LAWS OF THE STATE OF NORTH DAKOTA, ORDINANCES OF THE CITY OF BISMARCK, NORTH DAKOTA, AND DOES HEREBY VACATE ANY PREVIOUS PLATTING COMMISSION. IN WITNESS WHEREOF ARE SET THE HANDS AND SEALS OF THE CHAIRMAN AND SECRETARY OF THE PLANNING COMMISSION OF THE CITY OF BISMARCK.

WAYNE LEE YEAGER - CHAIRMAN
CARL D. HOKENSTAD - SECRETARY

APPROVAL OF BOARD OF CITY COMMISSIONERS

THE BOARD OF CITY COMMISSIONERS OF THE CITY OF BISMARCK, NORTH DAKOTA, HAS APPROVED THE SUBDIVISION OF LAND AS SHOWN ON THE ANNEXED PLAT, HAS ACCEPTED THE DEDICATION OF ALL STREETS SHOWN THEREON, HAS APPROVED THE GROUNDS AS SHOWN ON THE ANNEXED PLAT AS AN AMENDMENT TO THE MASTER PLAN OF THE CITY OF BISMARCK, NORTH DAKOTA, AND DOES HEREBY VACATE ANY PREVIOUS PLATTING WITHIN THE BOUNDARY OF THE ANNEXED PLAT.

THE FOREGOING ACTION OF THE BOARD OF CITY COMMISSIONERS OF BISMARCK, NORTH DAKOTA, WAS TAKEN BY RESOLUTION APPROVED THE _____ DAY OF _____, 2013.

ATTEST
W. C. WOCKEN - CITY ADMINISTRATOR

APPROVAL OF CITY ENGINEER

I, MELVIN J. BULLINGER, CITY ENGINEER OF THE CITY OF BISMARCK, NORTH DAKOTA, HEREBY APPROVE "EAGLE CREST SIXTH ADDITION", BISMARCK, NORTH DAKOTA AS SHOWN ON THE ANNEXED PLAT.

MELVIN J. BULLINGER
CITY ENGINEER

OWNER'S CERTIFICATE & DEDICATION

KNOW ALL MEN BY THESE PRESENTS THAT FIVE GUYS INVESTMENT, L.P., BEING THE OWNERS AND PROPRIETORS OF THE PROPERTY SHOWN HEREON HAS CAUSED THAT PORTION DESCRIBED HEREON TO BE SURVEYED AND PLATTED AS "EAGLE CREST SIXTH ADDITION", BISMARCK, NORTH DAKOTA, AND DO SO DEDICATE STREETS AS SHOWN HEREON INCLUDING ALL SEWER, CULVERTS, WATER AND OTHER PUBLIC UTILITY LINES WHETHER SHOWN HEREON OR NOT TO THE PUBLIC USE FOREVER.

THEY ALSO DEDICATE EASEMENTS TO THE CITY OF BISMARCK TO RUN WITH THE LAND, FOR GAS, ELECTRIC, TELEPHONE OR OTHER PUBLIC UTILITIES OR SERVICES OR UNDER THOSE CERTAIN STRIPS OF LAND DESIGNATED HEREON AS UTILITY, SANITARY SEWER, STORM SEWER & STORM WATER EASEMENTS.

THEY FURTHERMORE DEDICATE TO THE CITY OF BISMARCK "STORM WATER AND DRAINAGE EASEMENTS" TO RUN WITH THE LAND FOR THE PURPOSE OF STORM SEWER AND SURFACE WATER DRAINAGE UNDER, OVER, THROUGH AND/OR ACROSS THOSE AREAS DEDICATED HEREON AS "STORM WATER AND DRAINAGE EASEMENTS" FOR THE PURPOSE OF CONSTRUCTION, REPAIR, ENLARGING AND MAINTAINING STORM WATER MANAGEMENT FACILITIES TOGETHER WITH NECESSARY APPURTENANCES THERE TO FOR STORM WATER, STORM SEWER AND SURFACE WATER DRAINAGE AND MANAGEMENT OF SAID STORM WATER FLOW IN A MANNER THAT WILL PERMIT THE FREE AND UNOBSTRUCTED FLOW OF WATER UNDER, OVER AND/OR ACROSS THE EASEMENT AREA.

STATE OF NORTH DAKOTA)
COUNTY OF BURLEIGH)

JACK KNUTSON GENERAL PARTNER
FIVE GUYS INVESTMENT LLP
4308 BOULDER RIDGE ROAD
BISMARCK, N.D.

ON THIS _____ DAY OF _____, 2013, BEFORE ME PERSONALLY APPEARED JACK KNUTSON, KNOWN TO ME TO BE THE PERSON DESCRIBED IN AND WHO EXECUTED THE FOREGOING CERTIFICATE AND HE ACKNOWLEDGED TO ME THAT HE EXECUTED THE SAME.

DAVID PATIENCE, NOTARY PUBLIC
BURLEIGH COUNTY, NORTH DAKOTA
MY COMMISSION EXPIRES AUGUST 24, 2016

SWENSON, HAGEN & COMPANY P.C.

909 Basin Avenue
Bismarck, North Dakota 58504
sheng@swensons-hagen.com
Phone (701) 223-2600
Fax (701) 223-2606

Surveying
Hydrology
Land Planning
Civil Engineering
Landscape & Site Design
Construction Management