



MICROFINANCE RESPONSES TO THE REFUGEE AND MIGRANT SITUATION IN EUROPE

**Roundtable Discussion
Athens, 2nd March 2016**

Microfinance Responses to the Refugee and Migrant Situation in Europe

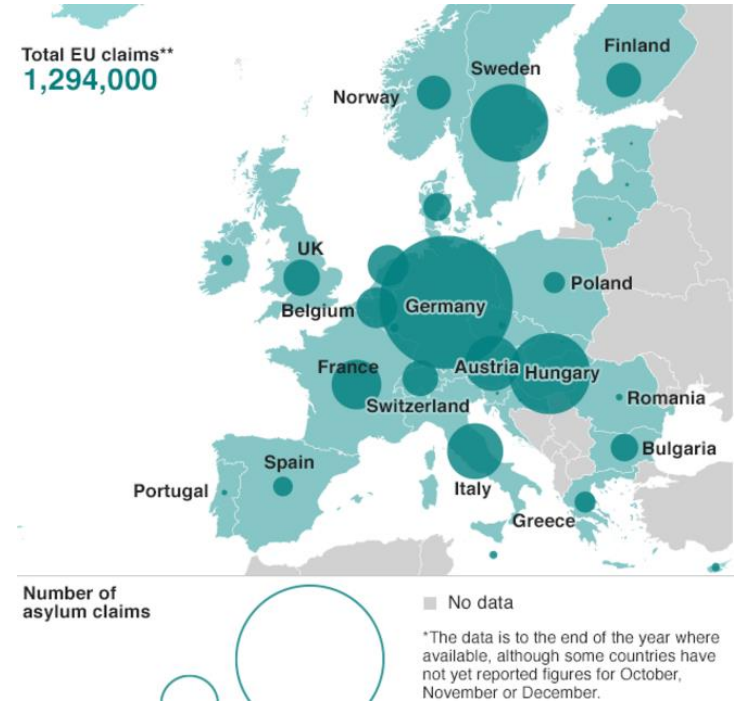
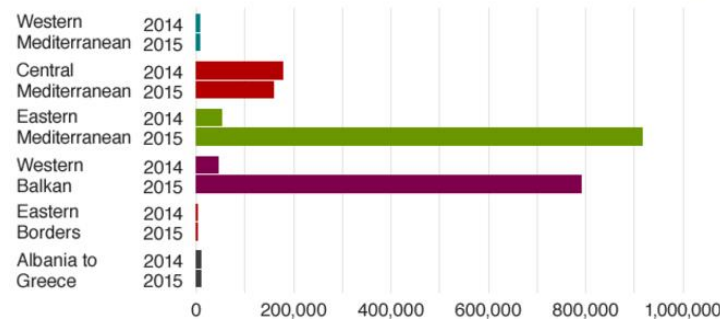
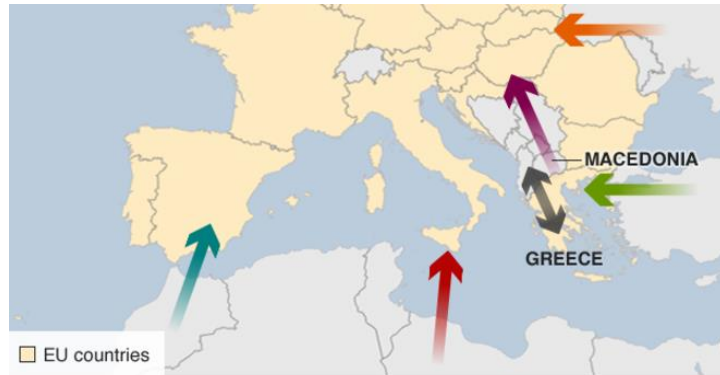


Agenda

1. Introduction
2. The Experience of Microfinance Development, Serbia
3. Round 1 (European Experience)
4. Round 2 (Transferability to the Greek Context)
5. Round 3 (Q & A)
6. Wrap-up



• (European) Context of the Refugee Crisis

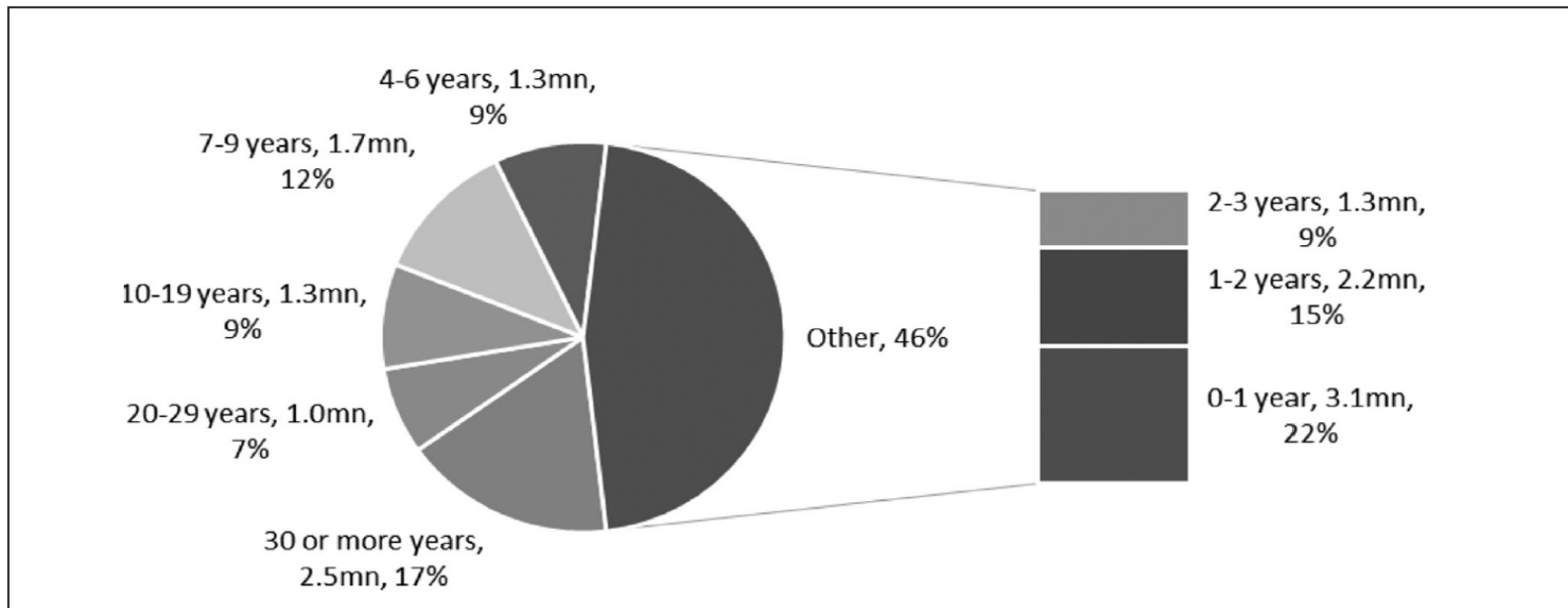


** Includes Switzerland and Norway

- About 20 mln international refugees and 230 mln migrant workers worldwide
- Europe hosts 1/3 of the migrant workers and increasingly refugees
- Turkey, Jordan and Lebanon host 4.5 mln Syrian refugees
- Increasing arrivals in Greece since early 2016....



• Duration of Refugee Displacement (2014)



- Analysis 1978-2014: from 20 larger refugee crisis ones (>400,000), 13 still endure
- Conflicts trigger crises; can explode (Syria 4.5 mln) or slowly evolve (Sudan)
- About 50% will never return to their homes
- Recent figures triggered by the situation at the border of Europe

Source: ODI/Humanitarian Policy Group (HPG) Report (2015): Protected replacement: uncertain paths to self-reliance in exile



• Migratory Phases & Financial Needs

Stage	Factors linked to the integration process	Financial Needs
INITIAL SETTLEMENT (around 1.5 years)	<ul style="list-style-type: none">• Job search• Documentation• Linguistic constraints• Community as only point of reference	Access to payments system Savings Remittances (debt repayment)
STABLE SETTLEMENT (2 to 7 years)	<ul style="list-style-type: none">• Job stability• Beginning of the integration process	Savings Access to credit Remittances (support to family)
INTEGRATION (over 7 years)	<ul style="list-style-type: none">• Decision to permanently live in host country• Family reunification• Marriage/children born in host country	Complex financial needs: credit, mortgage, insurance, pensions, investments in children's future Remittances (support to family and investment)

Source: Frigeri D. (ed) (2014), CeSPI, Rome and De Mateis. L. (2015): Financial Inclusion: Policy and Instruments for Migrants in Italy



Silke Mueffelmann

EaSI TA Team Leader

Frankfurt School of Finance & Management www.fs.de

s.mueffelmann@fs.de ; easi.ta@fs.de

Tel. +49 69 154 008 622

Thank you

www.fi-compass.eu