



# SUNLIGHT

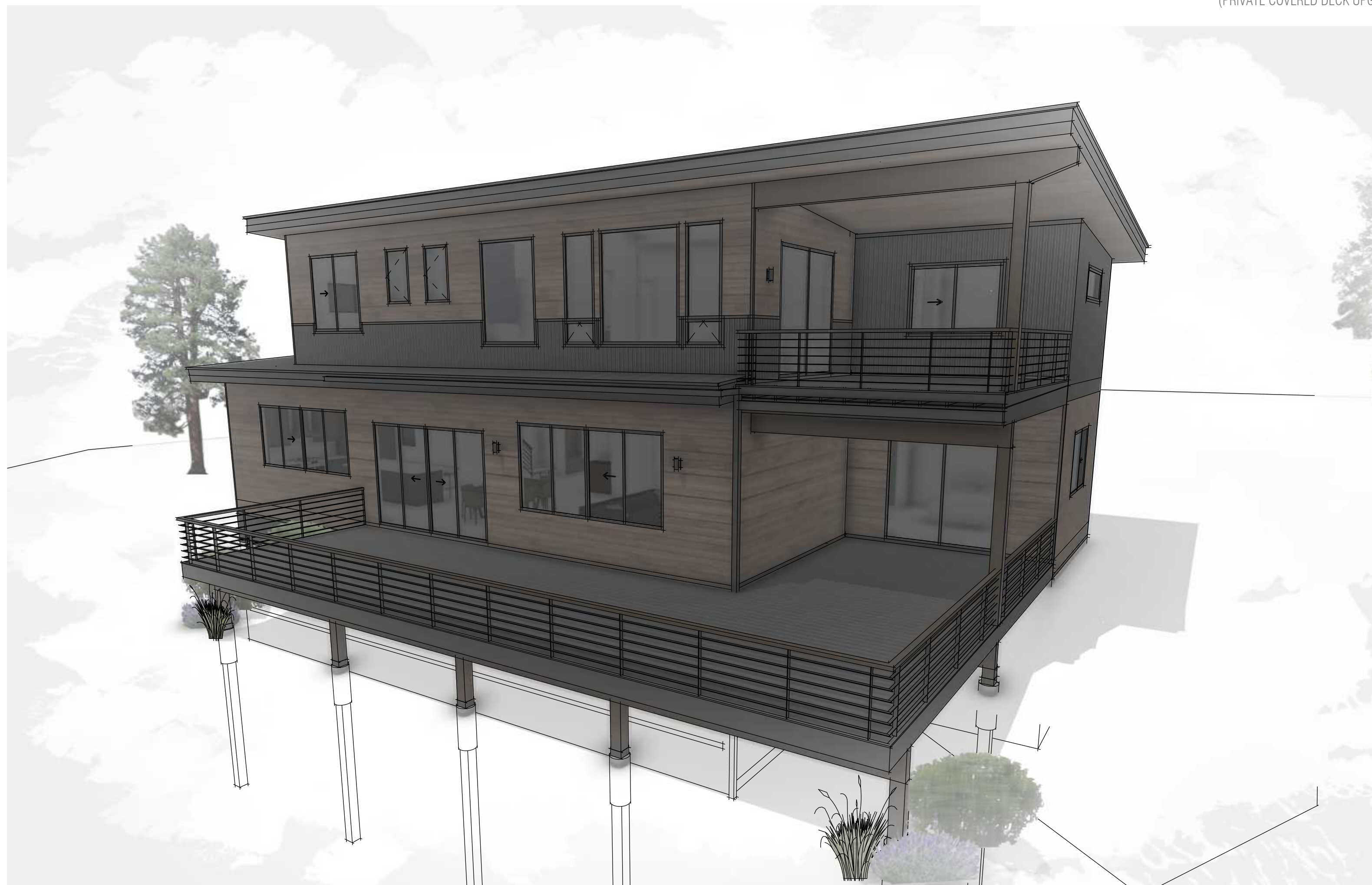
ASCENT SERIES  
3,182 SQ FT

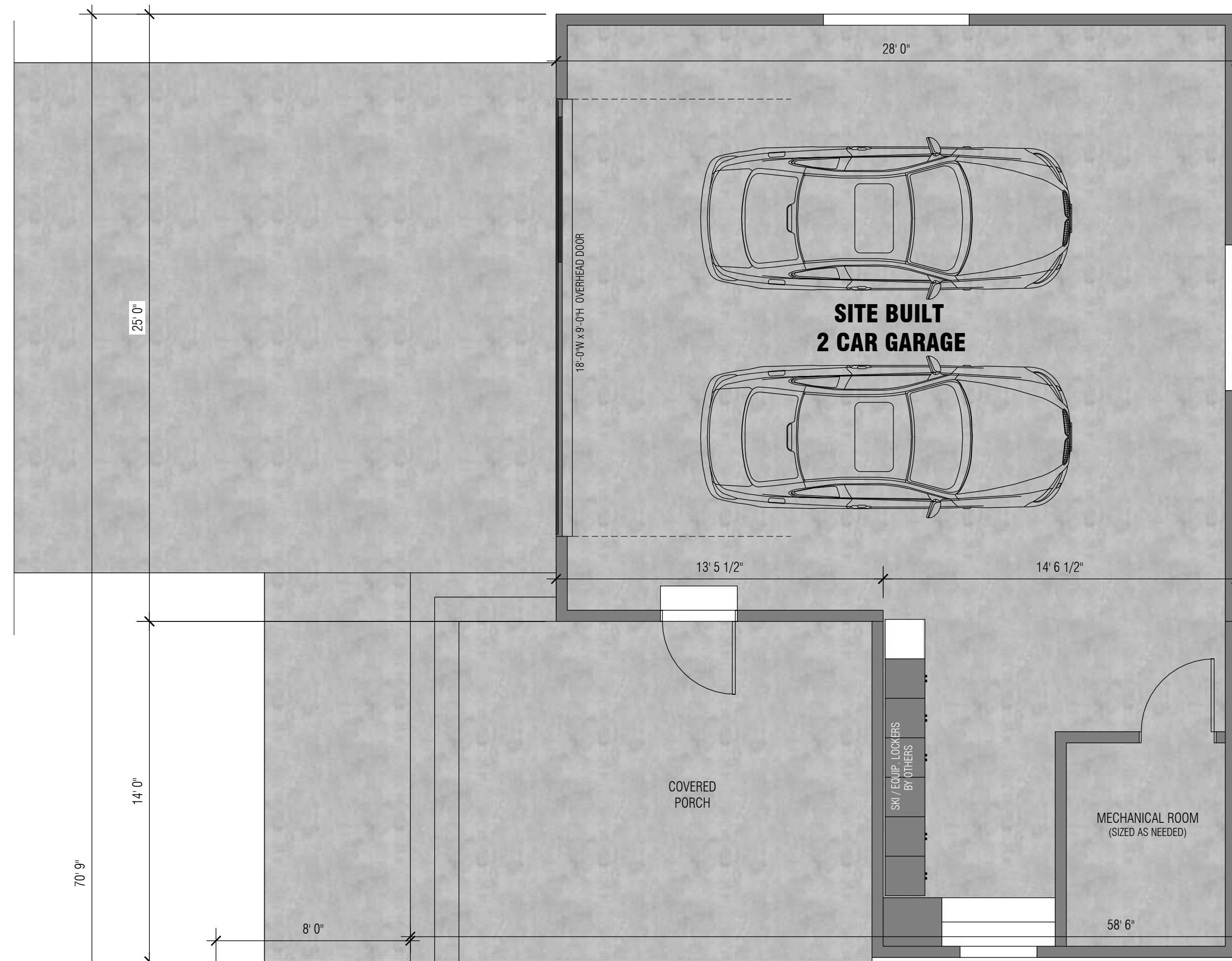
3,182 SQ. FT. • 4 MODS • 5 BEDROOMS • 3.5 BATHS • 2 PRIMARY BEDROOMS •  
OPEN CONCEPT • 10'-0" MAIN LVL CEILINGS • SLOPED UPPER LVL CEILINGS TO 10'-10" • LARGE WALK-OUT DECK  
BASEMENT-COMBATIBLE • GARAGE /ENTRY OPTIONS • MIRRORED OPTIONS • PRIVATE COVERED DECK UPGRADE



## EXTERIOR PERSPECTIVES

(PRIVATE COVERED DECK UPGRADE DEPICTED IN THESE RENDERINGS)





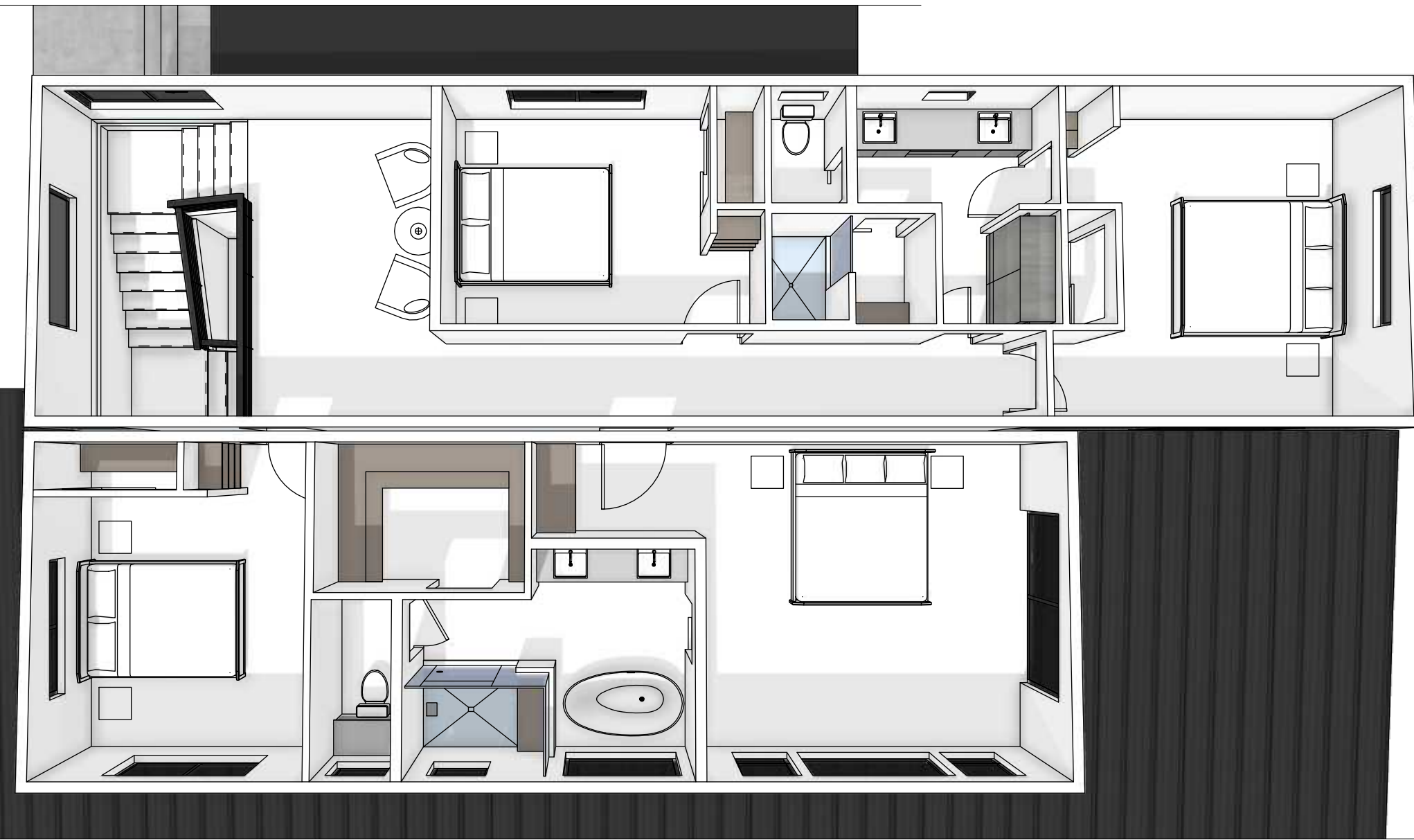
BIRD'S EYE: MAIN LEVEL

SCALE: NTS



FLOOR PLAN: MAIN LEVEL

SCALE: 1/4" = 1' 0"



BIRD'S EYE: UPPER LEVEL  
SCALE: NTS



FLOOR PLAN: UPPER LEVEL  
SCALE: 1/4" = 1'-0"



**ELEVATION: FRONT**

SCALE: 1/4" = 1'-0"



**ELEVATION: REAR**

SCALE: 1/4" = 1'-0"



**ELEVATION: RIGHT**

SCALE: 1/4" = 1'-0"



**ELEVATION: LEFT**

SCALE: 1/4" = 1'-0"

## INCLUDED IN BASE COST:

### Exterior:

- Andersen 100 Series Windows and Doors (per Plan)
- STK Cedar with Metal Accents (per Plan)

### Interior Finishes:

- Semi-custom cabinetry by Cliq Studio
- LVP Flooring throughout
- Tiled bathroom floors and shower surrounds
- Quartz countertops throughout
- Custom-built painted Bench and Cubbies in Mudroom

### Appliances and Mechanical:

- Electric Cove Heating System
- Whirlpool Stainless Appliances

## AVAILABLE UPGRADES:

### Exterior:

- Hardie Board & Batten and Lap siding alternatives
- Architectural metal panel accents

### Interior Finishes:

- Expanded cabinetry color & style options
- Engineered Hardwood Flooring
- Tile upgrade options
- Upgrade Mudroom Bench and Cubbies to match cabinetry

### Appliances and Mechanical:

- Warmboard Radiant Heat
- KitchenAid and GE Café Appliances
- Gas or Electric Fireplace & Surround finish options
- Accent lighting & system wiring

# SUNLIGHT

ASCENT SERIES  
3,182 SQ FT

