



SNOWTRACE

ASCENT SERIES
1,520 SQ FT

1,520 SQ. FT. · 2 MODS · 3 BEDROOMS · 2 BATHS · SINGLE STORY LIVING · DEDICATED FOYER
OPEN CONCEPT · SLOPED UPPER LVL CEILINGS TO 10'-6" · LARGE WINDOWS IN LIVING / DINING / KITCHEN
GENEROUSLY-SIZED PRIMARY EN SUITE · MIRRORED OPTIONS · COVERED DECKS INCLUDED IN MODS



EXTERIOR PERSPECTIVES

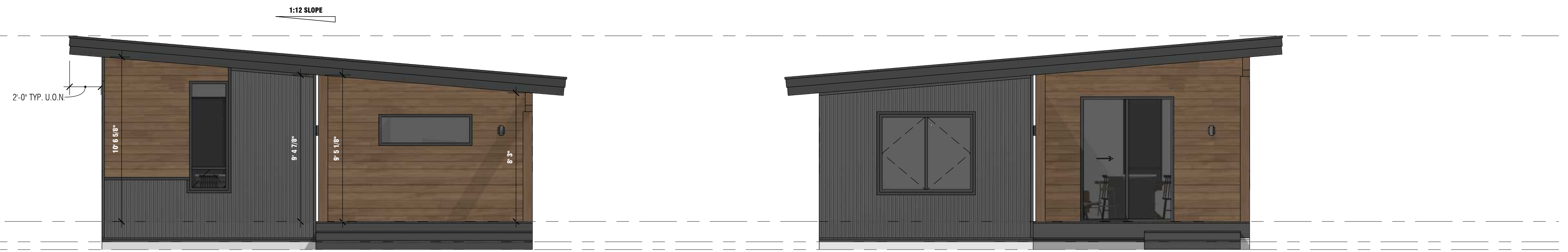


MAX. ROOF HEIGHT
ELEV = 125'-5 3/4"

T.O. MAIN LEVEL SUBFLOOR
ELEV = 101'-9 5/8"

T.O. CONC. WALL
ELEV = 100'-6"

MAX. FINISHED GRADE
ELEV = 100'-0"



ELEVATION: FRONT

SCALE: 1/4" = 1'-0"

ELEVATION: REAR

SCALE: 1/4" = 1'-0"

MAX. ROOF HEIGHT
ELEV = 125'-5 3/4"

T.O. MAIN LEVEL SUBFLOOR
ELEV = 101'-9 5/8"

T.O. CONC. WALL
ELEV = 100'-6"

MAX. FINISHED GRADE
ELEV = 100'-0"



ELEVATION: LEFT

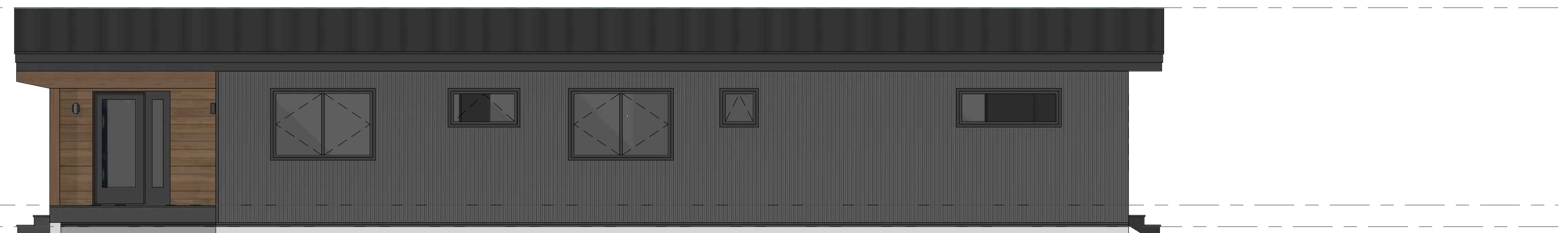
SCALE: 1/4" = 1'-0"

MAX. ROOF HEIGHT
ELEV = 125'-5 3/4"

T.O. MAIN LEVEL SUBFLOOR
ELEV = 101'-9 5/8"

T.O. CONC. WALL
ELEV = 100'-6"

MAX. FINISHED GRADE
ELEV = 100'-0"



ELEVATION: RIGHT

SCALE: 1/4" = 1'-0"



INCLUDED IN BASE COST:

Exterior:

- Andersen 100 Series Windows and Doors (per Plan)
- STK Cedar with Metal Accents (per Plan)

Interior Finishes:

- Semi-custom cabinetry by Cliq Studio
- LVP Flooring throughout
- Tiled bathroom floors and shower surrounds
- Quartz countertops throughout
- Custom-built painted Bench and Cubbies in Mudroom

Appliances and Mechanical:

- Electric Cove Heating System
- Whirlpool Stainless Appliances

AVAILABLE UPGRADES:

Exterior:

- Hardie Board & Batten and Lap siding alternatives
- Architectural metal panel accents

Interior Finishes:

- Expanded cabinetry color & style options
- Engineered Hardwood Flooring
- Tile upgrade options
- Upgrade Mudroom Bench and Cubbies to match cabinetry

Appliances and Mechanical:

- Warmboard Radiant Heat
- KitchenAid and GE Café Appliances
- Gas or Electric Fireplace & Surround finish options
- Accent lighting & system wiring

SNOWTRACE

**ASCENT SERIES
1,520 SQ FT**