



## POWDER RUN

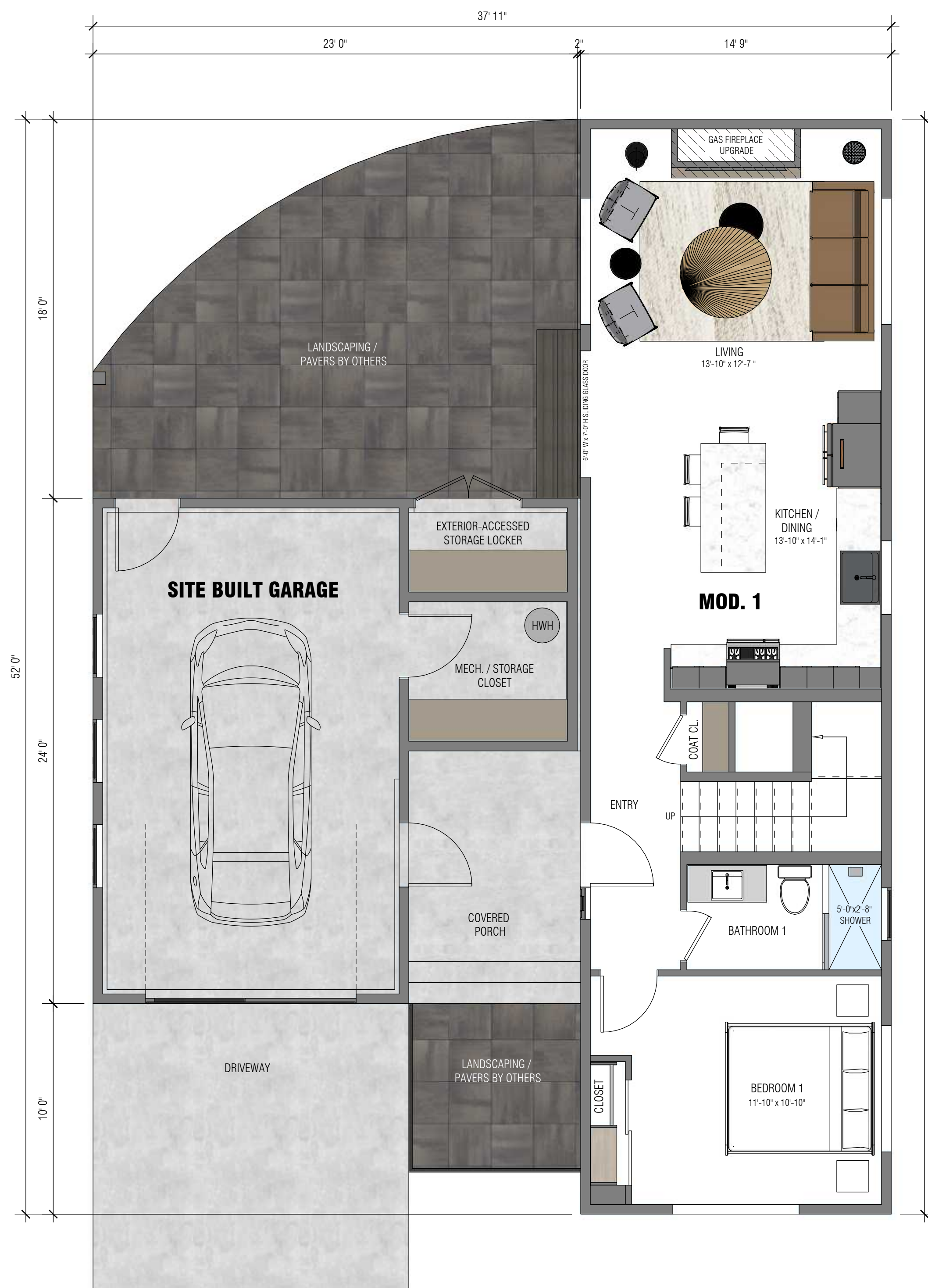
ASCENT SERIES  
1,386 SQ FT

1,386 SQ. FT. • 2 MODS • 3 BEDROOMS • 3 BATHS • EFFICIENT LAYOUT WITH MINIMAL FOOTPRINT  
PRIVATE UPPER LEVEL DECKS • COVERED PATIO • 9'-0" LOWER LVL AND UP TO 10'-10" UPPER LVL CEILINGS  
AMPLE WINDOWS & NATURAL SUNLIGHT • MIRRORED OPTIONS • OPTIONAL GAS FIREPLACE • INTEGRATED GARAGE



EXTERIOR PERSPECTIVES





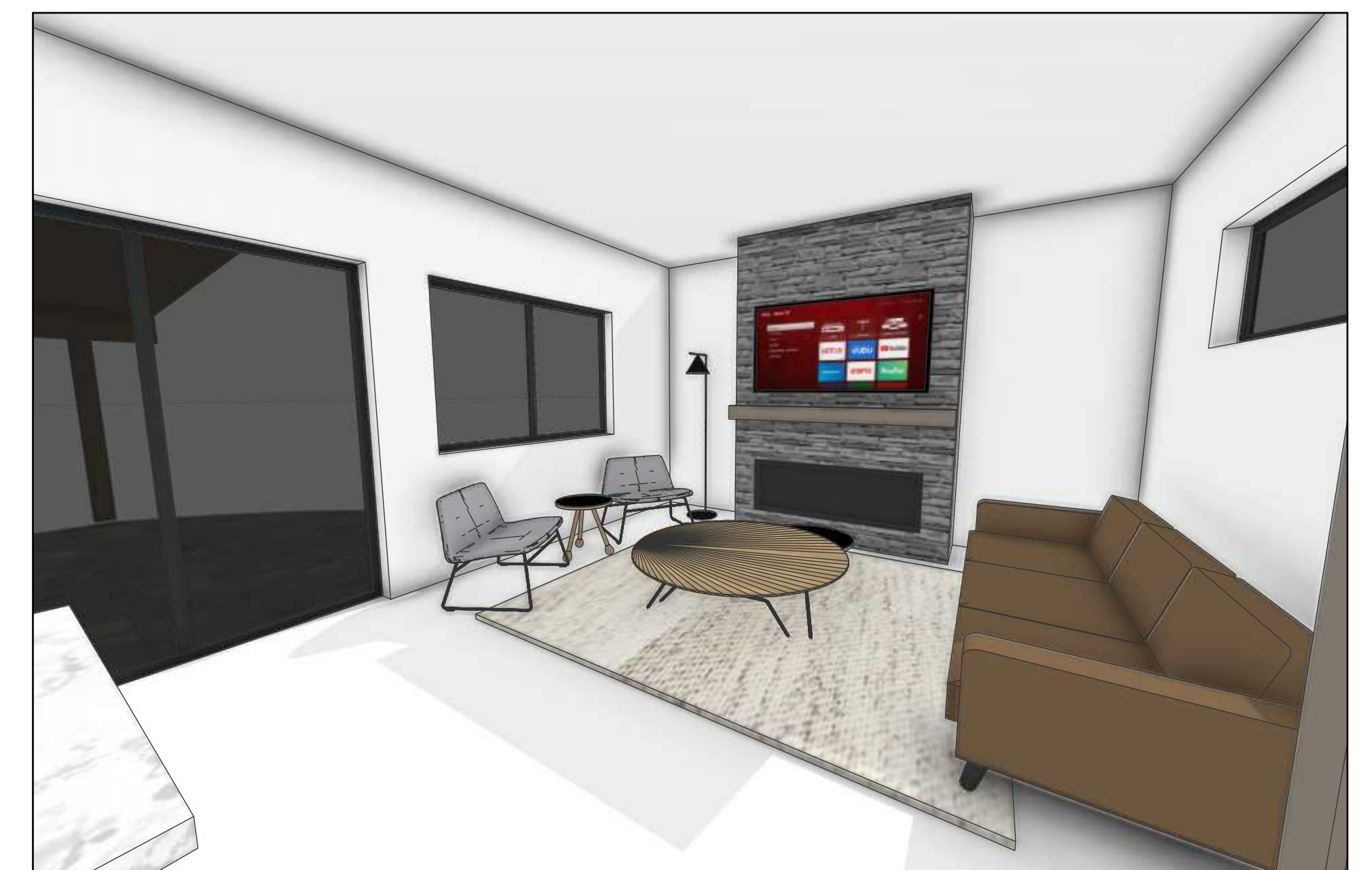
FLOOR PLAN: MAIN LEVEL

SCALE: 1/4" = 1' 0"



BIRD'S EYE: MAIN LEVEL

SCALE: NTS





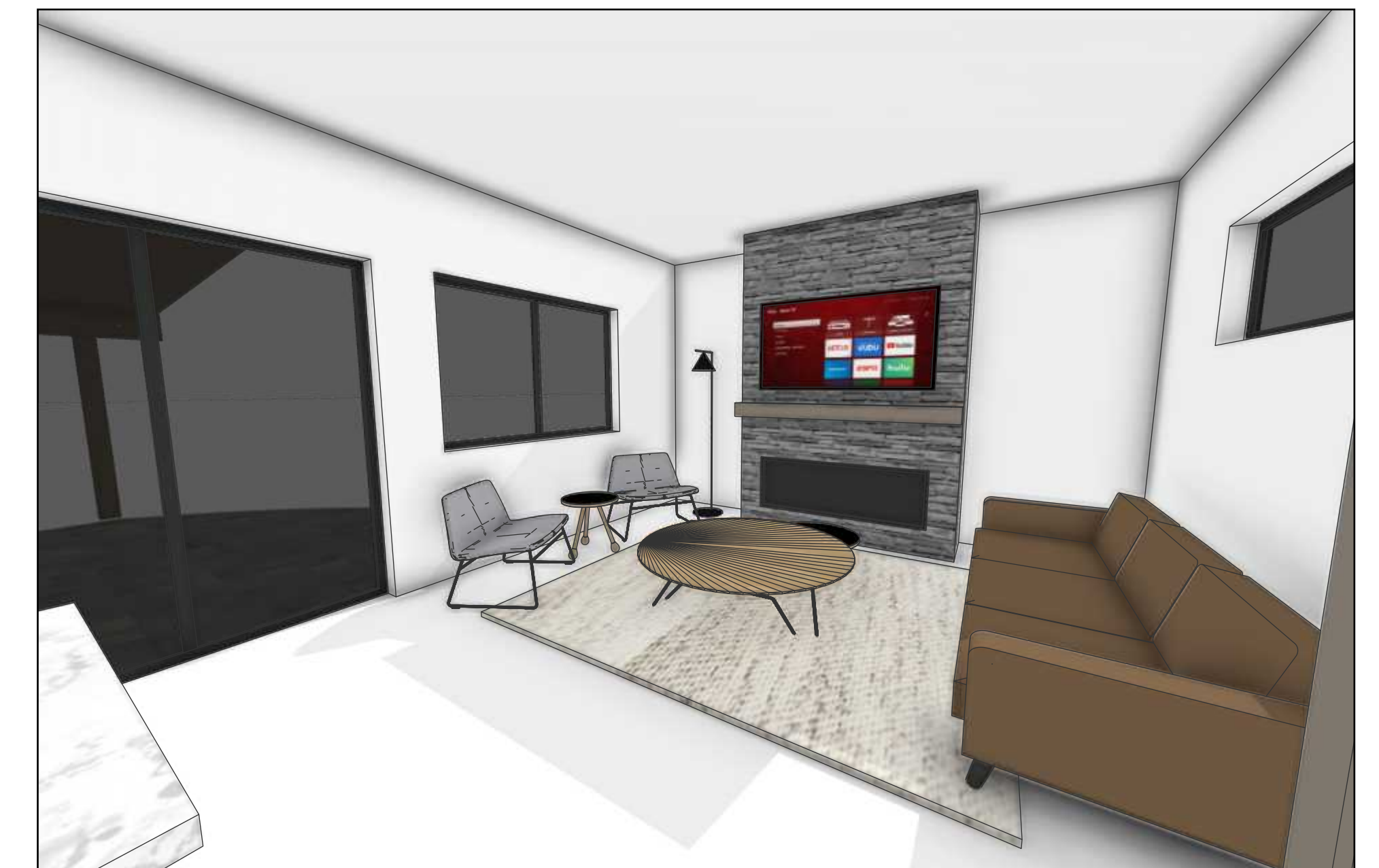
FLOOR PLAN: MAIN LEVEL

SCALE: 1/4" = 1' 0"



BIRD'S EYE: MAIN LEVEL

SCALE: NTS





ELEVATION: FRONT

SCALE: 1/4" = 1' 0"



ELEVATION: RIGHT

SCALE: 1/4" = 1' 0"



ELEVATION: REAR

SCALE: 1/4" = 1' 0"



ELEVATION: LEFT

SCALE: 1/4" = 1' 0"

## INCLUDED IN BASE COST:

### Exterior:

- Andersen 100 Series Windows and Doors (per Plan)
- STK Cedar with Metal Accents (per Plan)

### Interior Finishes:

- Semi-custom cabinetry by Cliq Studio
- LVP Flooring throughout
- Tiled bathroom floors and shower surrounds
- Quartz countertops throughout
- Custom-built painted Bench and Cubbies in Mudroom

### Appliances and Mechanical:

- Electric Cove Heating System
- Whirlpool Stainless Appliances

## AVAILABLE UPGRADES:

### Exterior:

- Hardie Board & Batten and Lap siding alternatives
- Architectural metal panel accents

### Interior Finishes:

- Expanded cabinetry color & style options
- Engineered Hardwood Flooring
- Tile upgrade options

### Appliances and Mechanical:

- Warmboard Radiant Heat
- KitchenAid and GE Café Appliances
- Gas or Electric Fireplace & Surround finish options
- Accent lighting & system wiring

# POWDER RUN

ASCENT SERIES  
1,386 SQ FT