



# HIDEAWAY

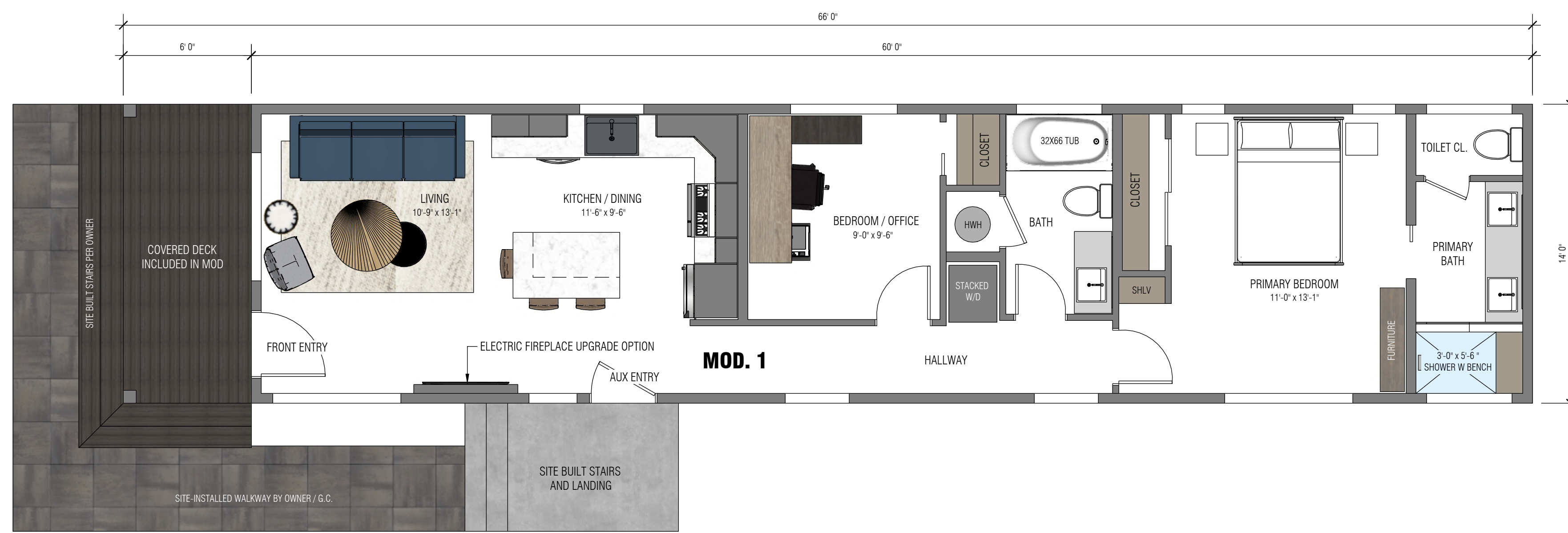
BASECAMP SERIES  
840 SQ FT

840 SQ. FT. · 1 MODS · 2 BEDROOMS · 2 BATHS · OPTIONAL ELECTRIC FIREPLACE  
PRIMARY EN SUITE · PERFECT FOR NARROW LOTS · SLOPED CEILINGS TO 10'-5"  
COVERED FRONT DECK · MIRRORED OPTIONS · DECK AND ROOF INCLUDED IN MODULAR BUILD

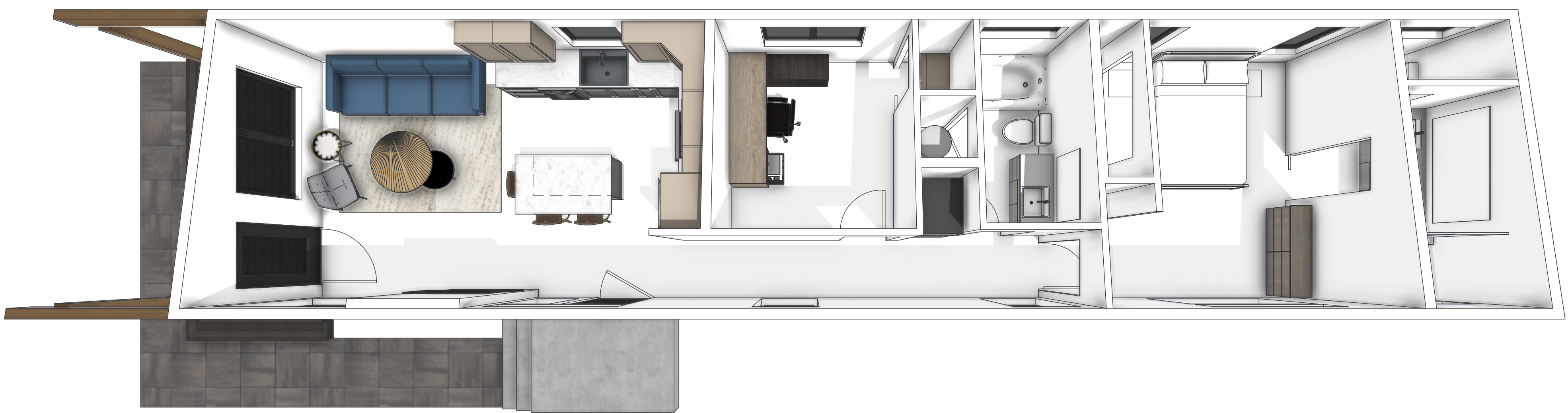


EXTERIOR PERSPECTIVES

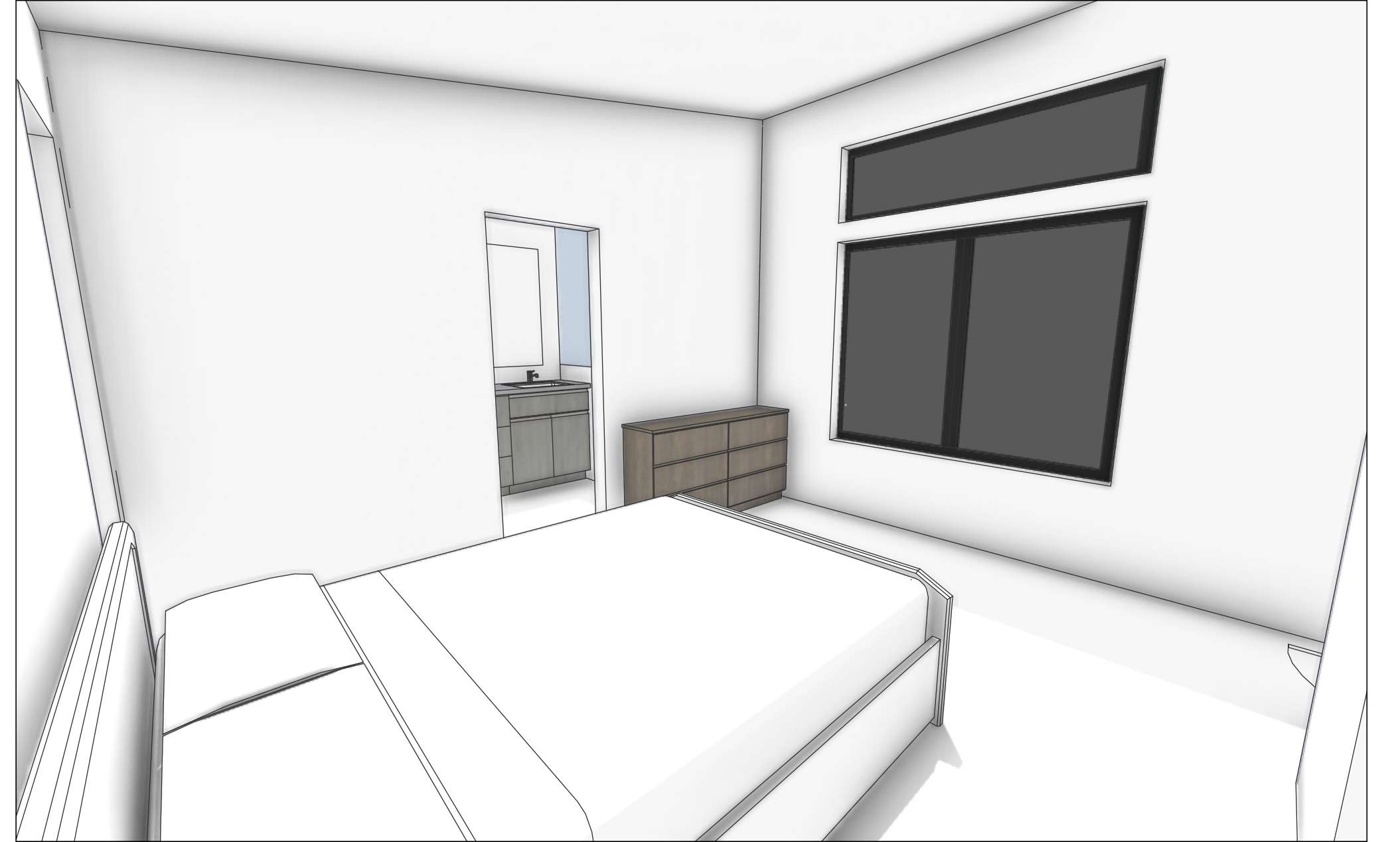




FLOOR PLAN: MAIN LEVEL  
SCALE: 1/4" = 1' 0"



BIRD'S EYE: MAIN LEVEL  
SCALE: NTS





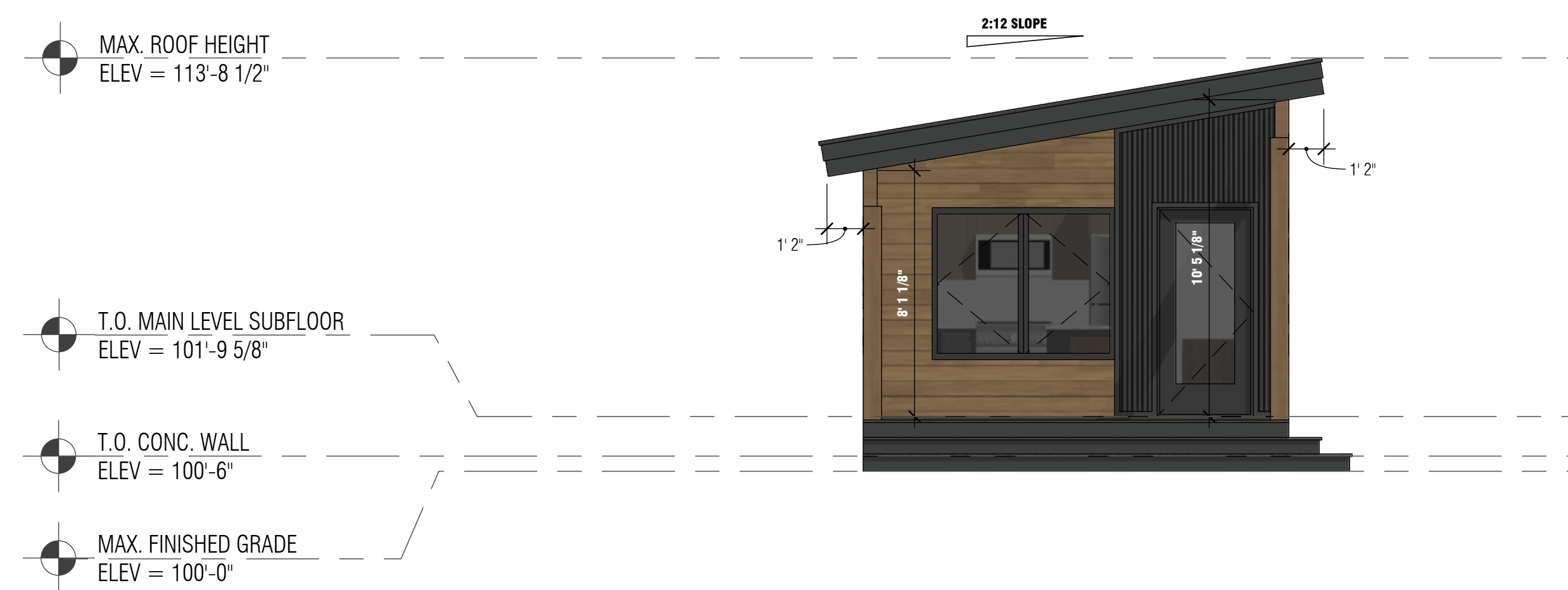
**ELEVATION: LEFT**

SCALE: 1/4" = 1' 0"



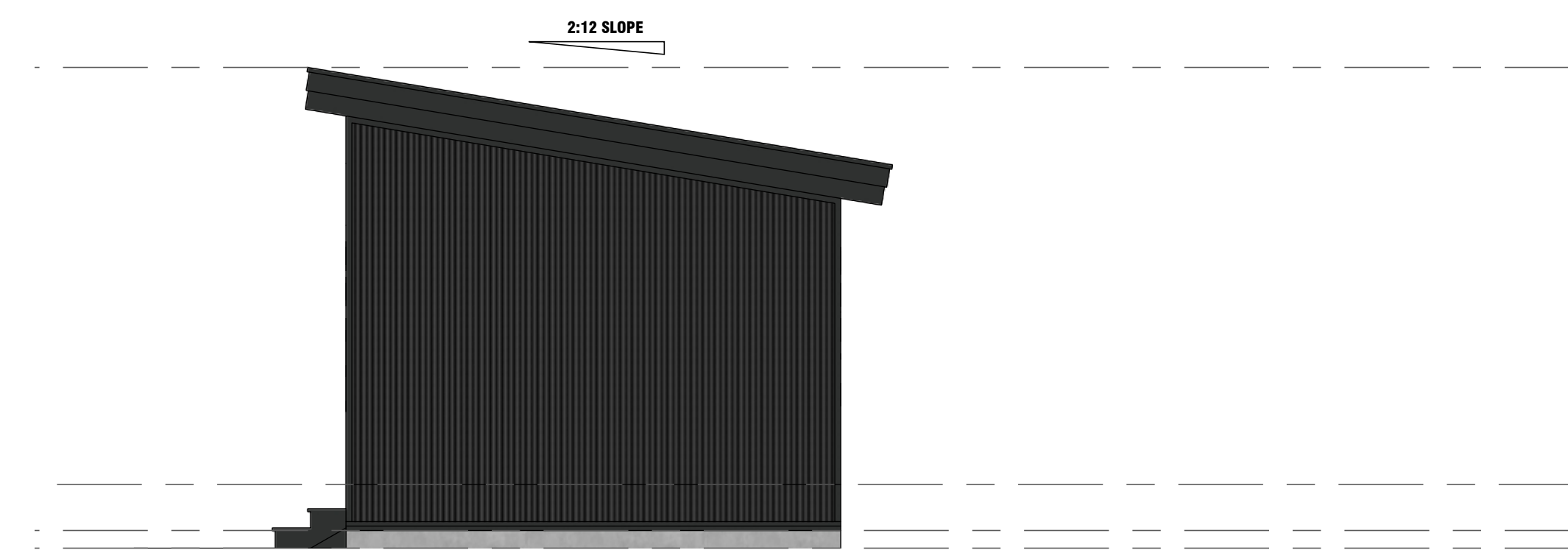
**ELEVATION: RIGHT**

SCALE: 1/4" = 1' 0"



**ELEVATION: FRONT**

SCALE: 1/4" = 1' 0"



**ELEVATION: REAR**

SCALE: 1/4" = 1' 0"

## INCLUDED IN BASE COST:

### Exterior:

- Andersen 100 Series Windows and Doors (per Plan)
- STK Cedar with Metal Accents (per Plan)

### Interior Finishes:

- Semi-custom cabinetry by Cliq Studio
- LVP Flooring throughout
- Tiled bathroom floors and shower surrounds
- Quartz countertops throughout

### Appliances and Mechanical:

- Electric Cove Heating System
- Whirlpool Stainless Appliances

## AVAILABLE UPGRADES:

### Exterior:

- Hardie Board & Batten and Lap siding alternatives
- Architectural metal panel accents

### Interior Finishes:

- Expanded cabinetry color & style options
- Engineered Hardwood Flooring
- Tile upgrade options

### Appliances and Mechanical:

- Warmboard Radiant Heat
- KitchenAid and GE Café Appliances
- Electric Fireplace & Surround finish options
- Accent lighting & system wiring

# HIDEAWAY

BASECAMP SERIES  
840 SQ FT