



FIRESIDE

BASECAMP SERIES
990 SQ FT

990 SQ. FT. • 1 MOD • 2 BEDROOMS • 2 BATHS • CEILINGS UP TO 10'-10"
GENEROUS BEDROOM SIZES • LARGE PRIMARY EN SUITE • LARGE WINDOWS FOR STELLAR VIEWS
• MIRRORED OPTIONS • OPTIONAL GAS FIREPLACE • MINIMAL ON-SITE SCOPE



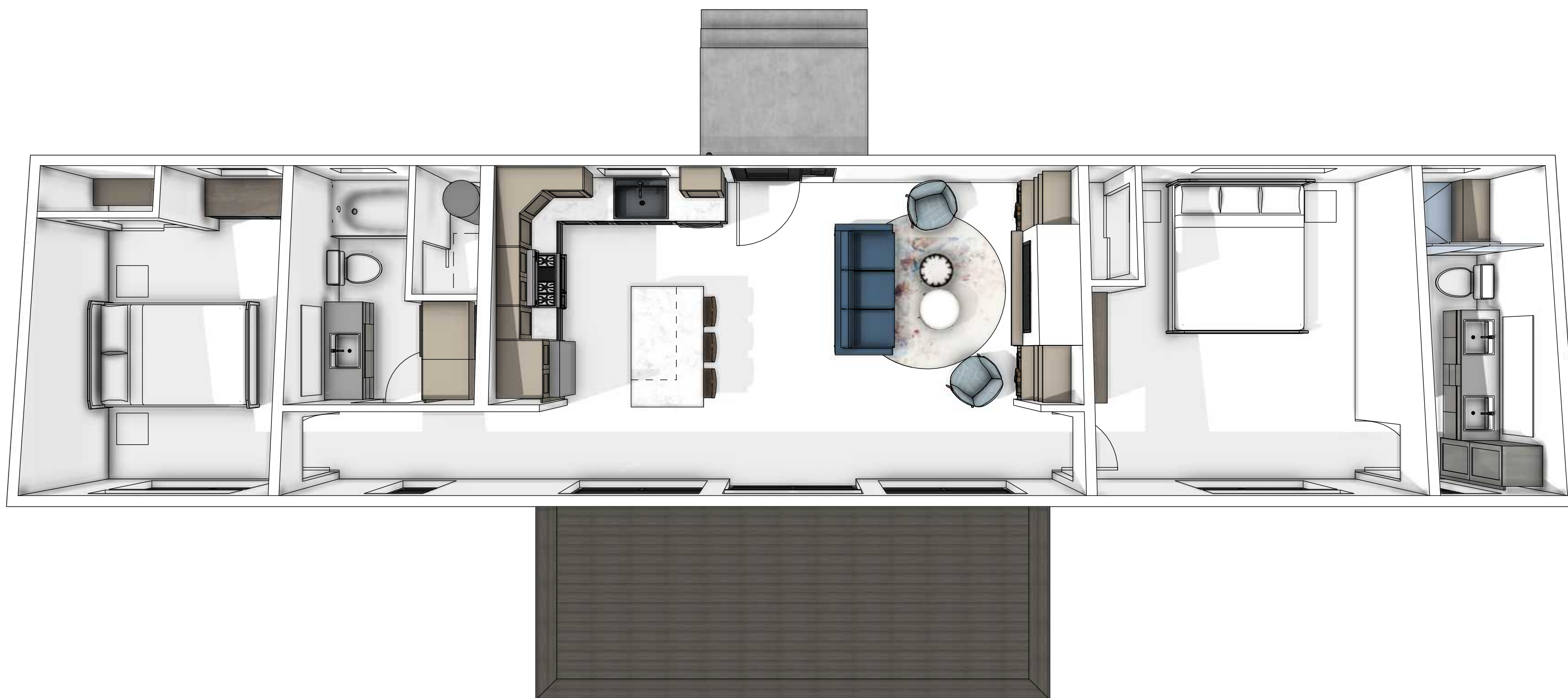
EXTERIOR PERSPECTIVES





FLOOR PLAN: MAIN LEVEL

SCALE: 1/4" = 1' 0"



BIRD'S EYE: MAIN LEVEL

SCALE: NTS





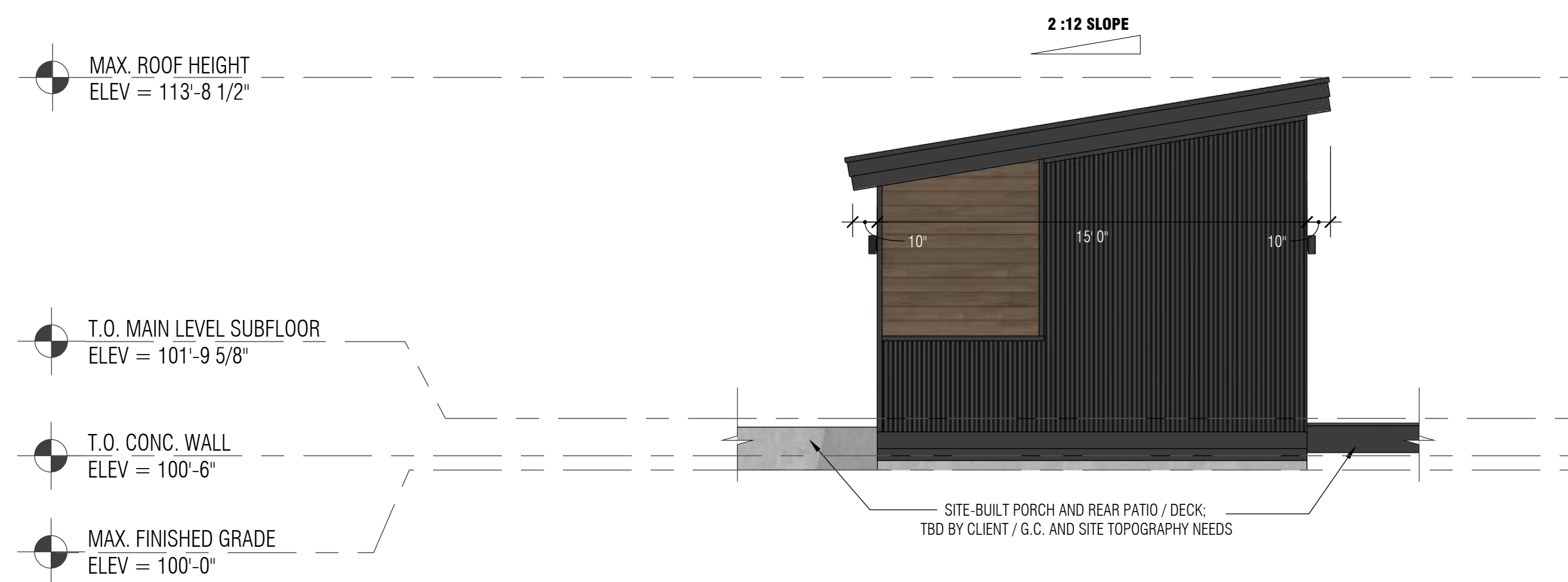
ELEVATION: FRONT

SCALE: 1/4" = 1' 0"



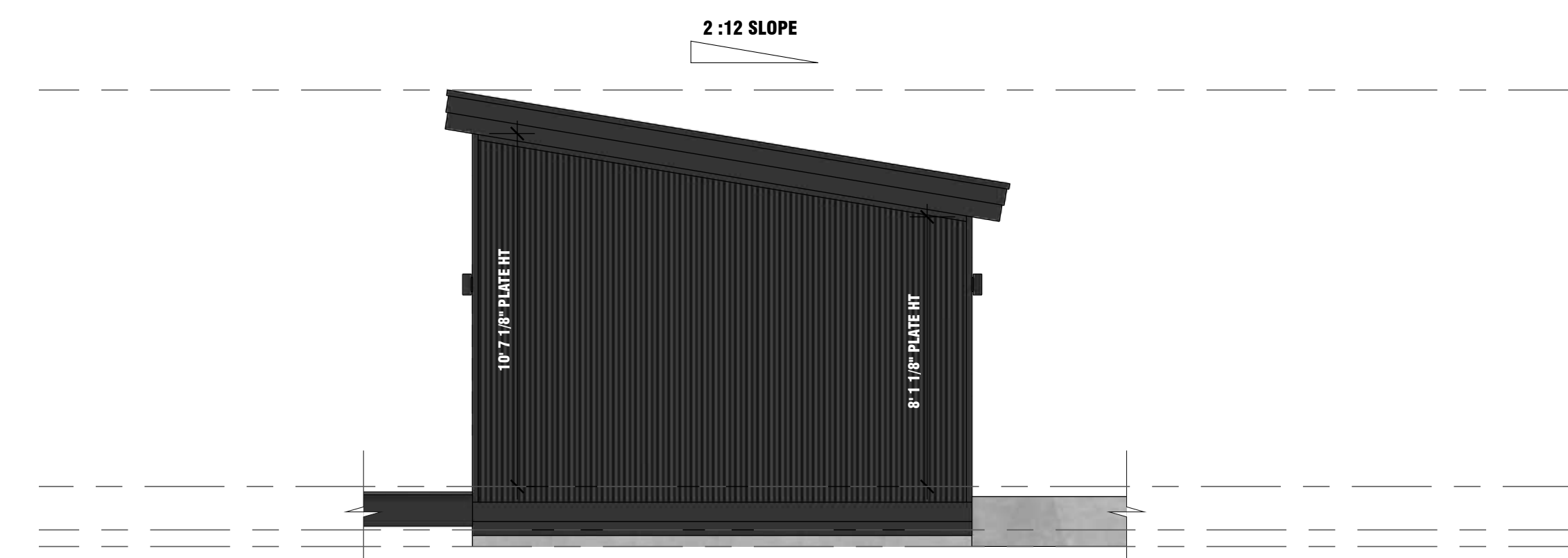
ELEVATION: REAR

SCALE: 1/4" = 1' 0"



ELEVATION: RIGHT

SCALE: 1/4" = 1' 0"



ELEVATION: LEFT

SCALE: 1/4" = 1' 0"

SITE-BUILT PORCH AND REAR PATIO / DECK;
TBD BY CLIENT / G.C. AND SITE TOPOGRAPHY NEEDS

INCLUDED IN BASE COST:

Exterior:

- Andersen 100 Series Windows and Doors (per Plan)
- STK Cedar with Metal Accents (per Plan)

Interior Finishes:

- Semi-custom cabinetry by Cliq Studio
- LVP Flooring throughout
- Tiled bathroom floors and shower surrounds
- Quartz countertops throughout
- Custom-built painted Bench and Cubbies in Mudroom

Appliances and Mechanical:

- Electric Cove Heating System
- Whirlpool Stainless Appliances

AVAILABLE UPGRADES:

Exterior:

- Hardie Board & Batten and Lap siding alternatives
- Architectural metal panel accents

Interior Finishes:

- Expanded cabinetry color & style options
- Engineered Hardwood Flooring
- Tile upgrade options

Appliances and Mechanical:

- Warmboard Radiant Heat
- KitchenAid and GE Café Appliances
- Gas or Electric Fireplace & Surround finish options
- Accent lighting & system wiring

FIRESIDE

BASECAMP SERIES
990 SQ FT