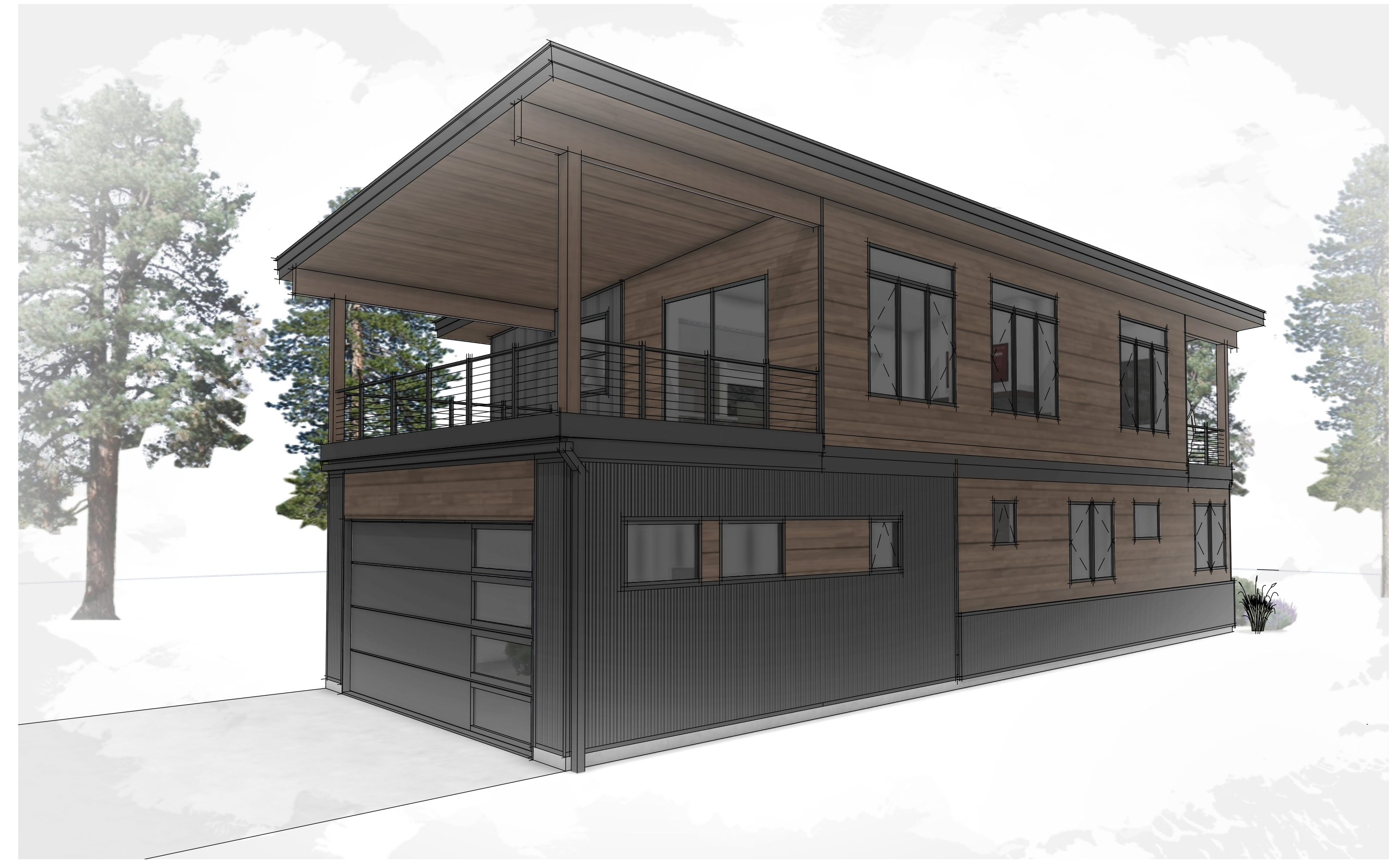
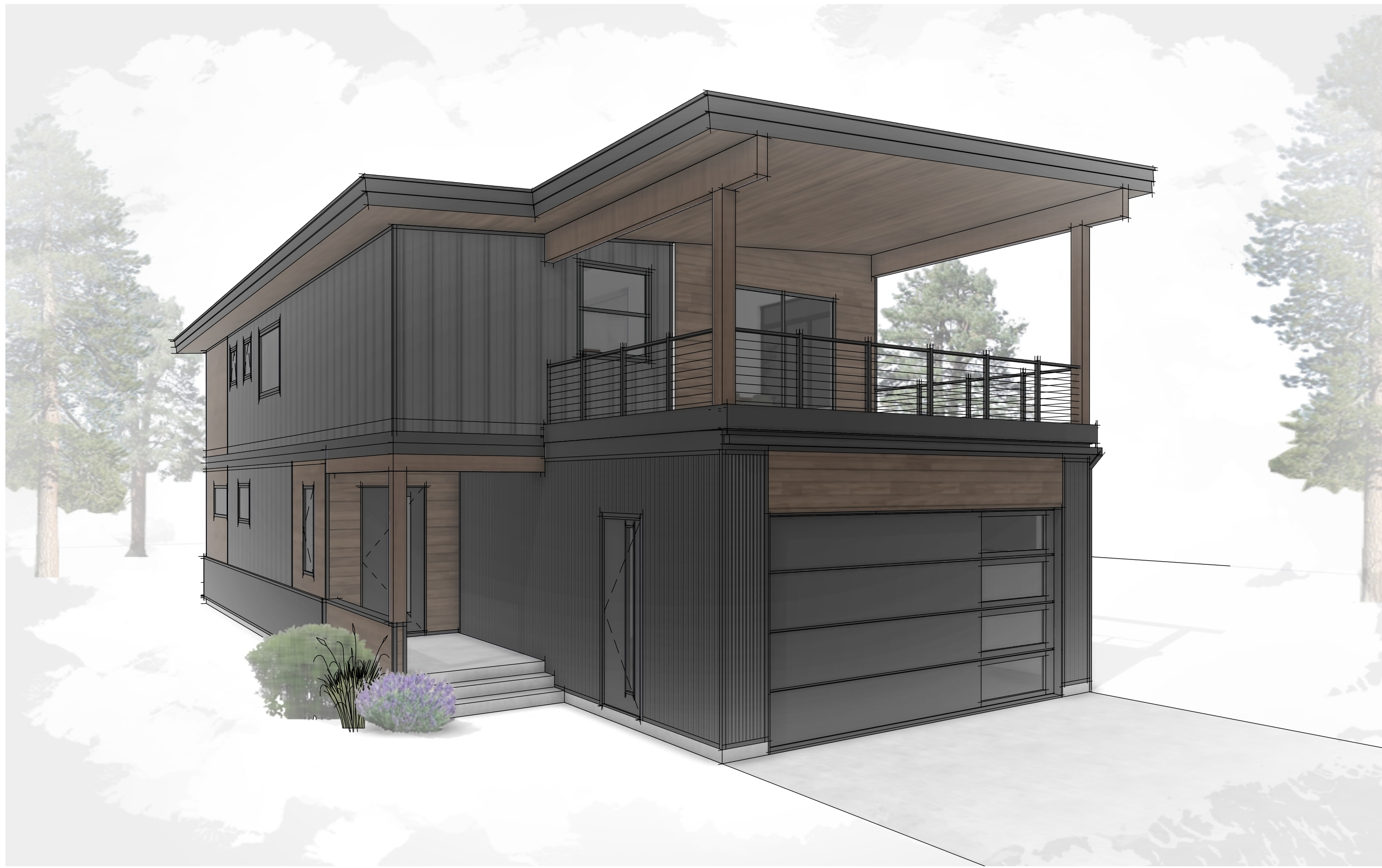




BLUEBIRD

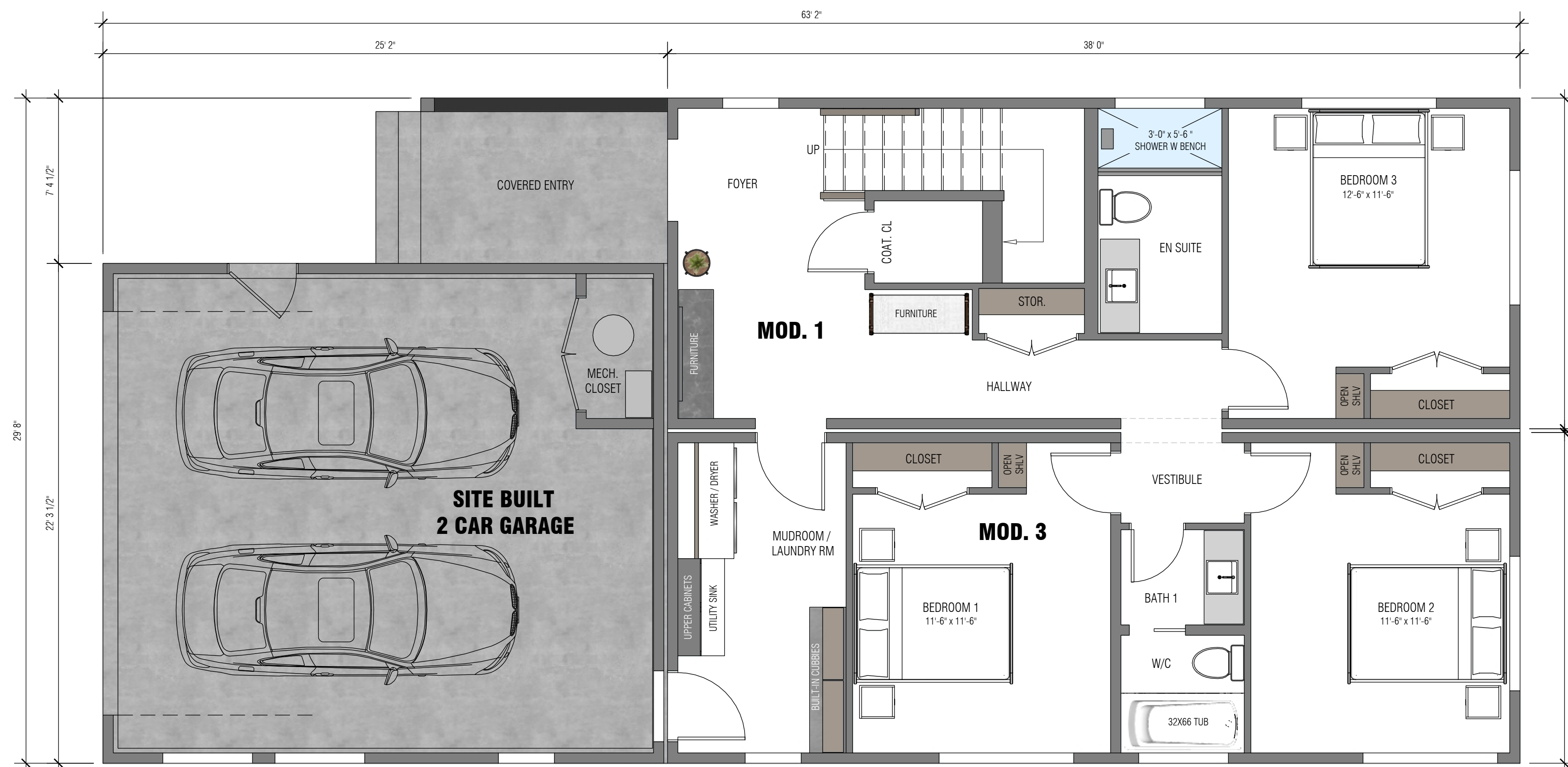
ASCENT SERIES
2,385 SQ FT

2,385 SQ. FT. · 4 MODS · 4 BEDROOMS · 3.5 BATHS · UPSTAIRS LIVING · LARGE COVERED UPPER LVL DECK
OPEN CONCEPT · 9'-4" MAIN LVL CEILINGS · SLOPED UPPER LVL CEILINGS TO 10'-11" · PRIVATE PRIMARY DECK
BASEMENT-COMBATIBLE · PLANNED ATTACHED GARAGE · MIRRORED OPTIONS



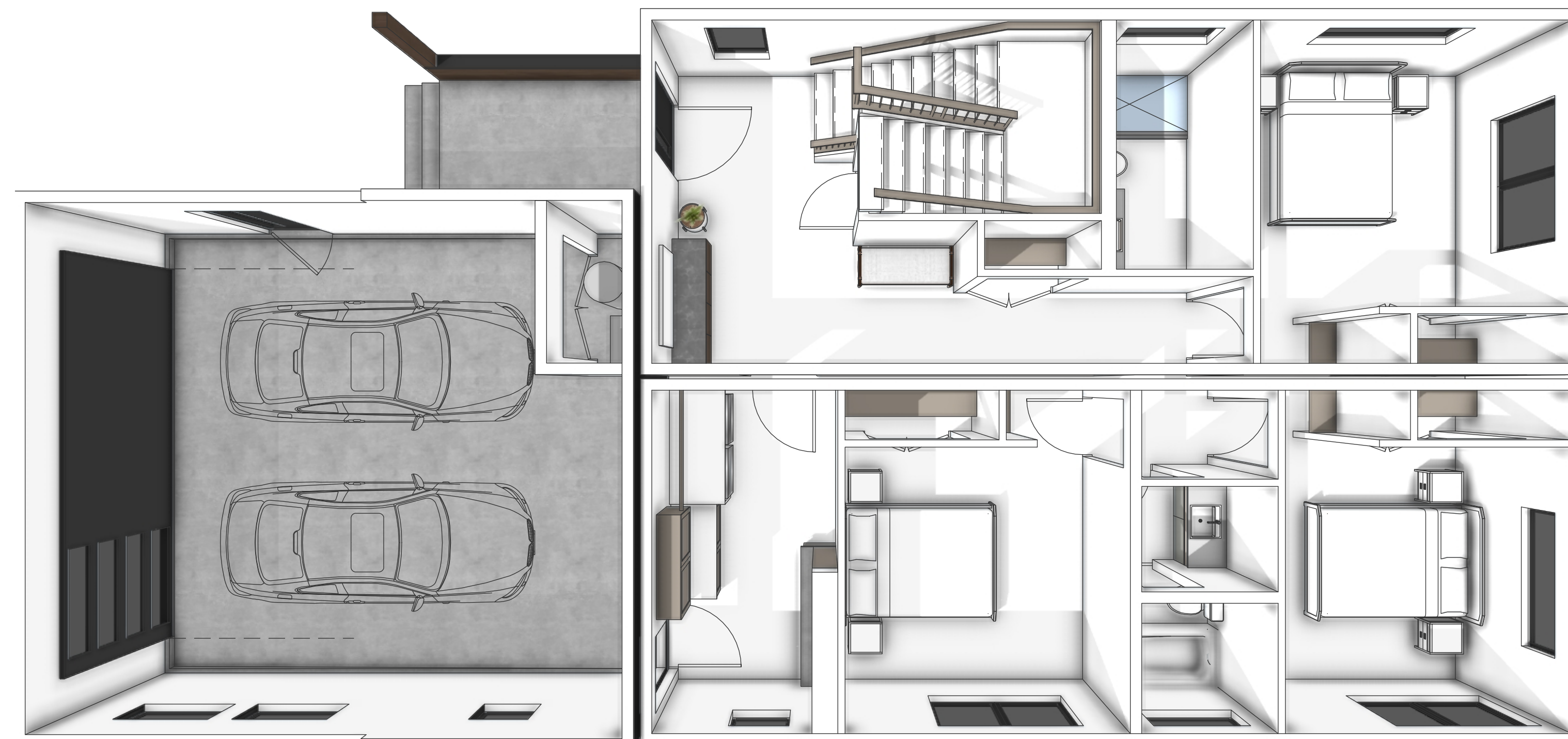
EXTERIOR PERSPECTIVES





FLOOR PLAN: MAIN LEVEL

SCALE: 1/4" = 1'0"



BIRD'S EYE: MAIN LEVEL

SCALE: NTS



MAX. ROOF HEIGHT
ELEV = 125'-3 5/8"

T.O. UPPER LEVEL SUBFLOOR
ELEV = 112'-11 3/4"

T.O. MAIN LEVEL SUBFLOOR
ELEV = 101'-9 5/8"

T.O. CONC. WALL
ELEV = 100'-6"

MAX. FINISHED GRADE
ELEV = 100'-0"



ELEVATION: FRONT

SCALE: 1/4" = 1'-0"



ELEVATION: RIGHT

SCALE: 1/4" = 1'-0"

MAX. ROOF HEIGHT
ELEV = 125'-5 3/4"

T.O. UPPER LEVEL SUBFLOOR
ELEV = 113'-1/2"

T.O. MAIN LEVEL SUBFLOOR
ELEV = 101'-9 5/8"

T.O. CONC. WALL
ELEV = 100'-6"

MAX. FINISHED GRADE
ELEV = 100'-0"



ELEVATION: REAR

SCALE: 1/4" = 1'-0"



ELEVATION: LEFT

SCALE: 1/4" = 1'-0"

INCLUDED IN BASE COST:

Exterior:

- Andersen 100 Series Windows and Doors (per Plan)
- STK Cedar with Metal Accents (per Plan)

Interior Finishes:

- Semi-custom cabinetry by Cliq Studio
- LVP Flooring throughout
- Tiled bathroom floors and shower surrounds
- Quartz countertops throughout
- Custom-built painted Bench and Cubbies in Mudroom

Appliances and Mechanical:

- Electric Cove Heating System
- Whirlpool Stainless Appliances

AVAILABLE UPGRADES:

Exterior:

- Hardie Board & Batten and Lap siding alternatives
- Architectural metal panel accents

Interior Finishes:

- Expanded cabinetry color & style options
- Engineered Hardwood Flooring
- Tile upgrade options

Appliances and Mechanical:

- Warmboard Radiant Heat
- KitchenAid and GE Café Appliances
- Gas or Electric Fireplace & Surround finish options
- Accent lighting & system wiring

BLUEBIRD

ASCENT SERIES
2,385 SQ FT