



PROPERTIES FOR SALE “AS-IS”

FEBRUARY 2019

OFFER DUE DATE

SEALED OFFERS MUST BE POSTMARKED OR RECEIVED BY FEBRUARY 15, 2019 AT 5PM

To be considered, please complete the “OFFER AND ACCEPTANCE FOR LANDUS COOPERATIVE PROPERTY”. The form is available online at

<http://www.landuscooperative.com/properties-for-sale/>

For additional information on the offer process, please contact:

Scott Smyth

2321 North Loop Drive, Ste. 220

Ames, IA 50010-8218

Office: 515-817-2170

scott.smyth@landuscooperative.com

PROPERTY ADDRESS & PARCEL INFORMATION

2990 360th Street, Lohrville, IA 51453
Parcel #863214200005 (Calhoun County, IA)
3.13 Acres

LOCATION CONTACT INFORMATION

Location Manager Contact

Matt Thompson

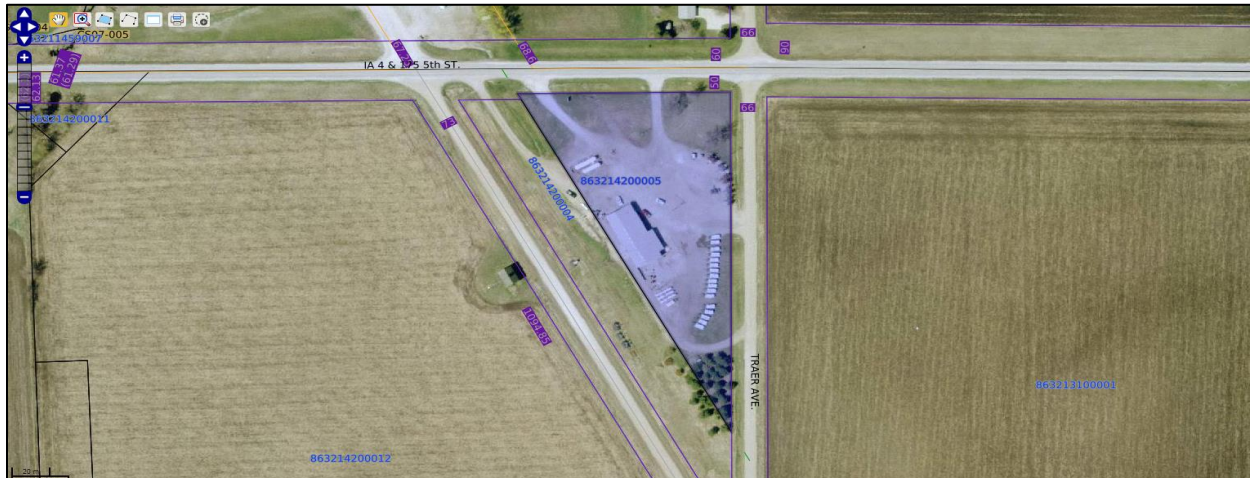
O: 515-351-7443

Matt.Thompson@landuscooperative.com

FIXED ASSETS – “AS-IS” CONDITION

Building #1	Fertilizer Storage Building, built in 1965, 6000 SF
Other Item #1	In Ground full-size Truck Scale

Property – Lohrville, IA



Additional Photos

