



PROPERTIES FOR SALE “AS-IS”

FEBRUARY 2019

OFFER DUE DATE

SEALED OFFERS MUST BE POSTMARKED OR RECEIVED BY FEBRUARY 15, 2019 AT 5PM

To be considered, please complete the “OFFER AND ACCEPTANCE FOR LANDUS COOPERATIVE PROPERTY”. The form is available online at

<http://www.landuscooperative.com/properties-for-sale/>

For additional information on the offer process, please contact:

Scott Smyth

2321 North Loop Drive, Ste. 220

Ames, IA 50010-8218

Office: 515-817-2170

scott.smyth@landuscooperative.com

PROPERTY ADDRESS & PARCEL INFORMATION

2150 320th Street, Fort Dodge, IA 50501 (Palm Grove)

Parcel #1425100005 (Webster County, IA)

1.00 Acre

LOCATION CONTACT INFORMATION

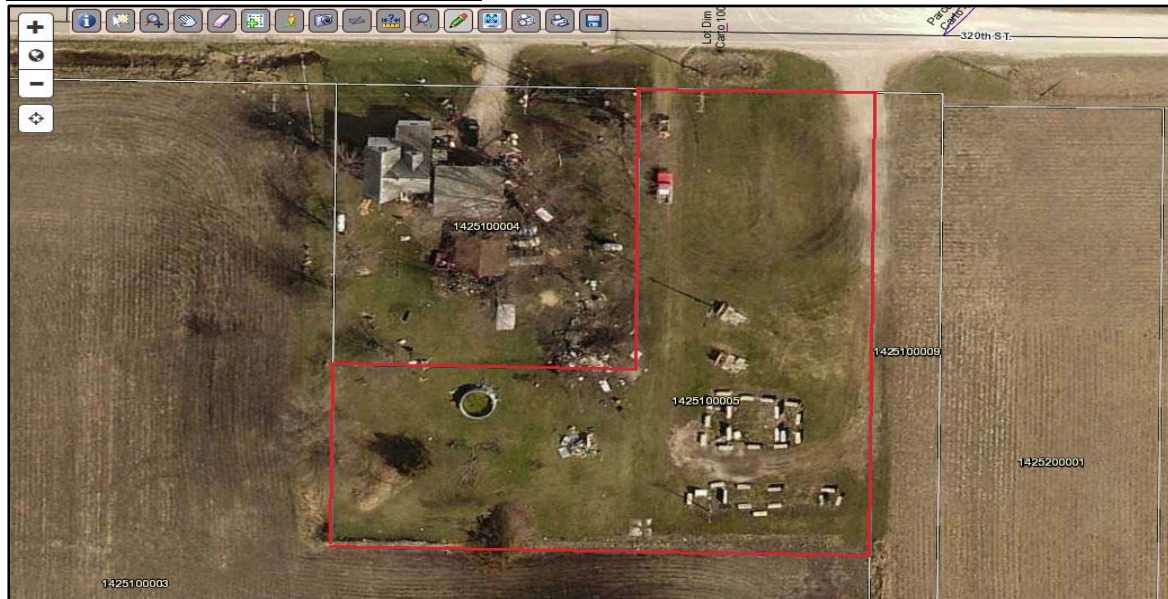
Location Manager Contact

Matt Thompson

O: 515-351-7443

Matt.Thompson@landuscooperative.com

Property – Palm Grove (Fort Dodge, IA)



Additional Photos

