



---

## PROPERTIES FOR SALE “AS-IS”

### FEBRUARY 2019

---

#### OFFER DUE DATE

**SEALED OFFERS MUST BE POSTMARKED OR RECEIVED BY FEBRUARY 15, 2019 AT 5PM**

To be considered, please complete the “OFFER AND ACCEPTANCE FOR LANDUS COOPERATIVE PROPERTY”. The form is available online at

<http://www.landuscooperative.com/properties-for-sale/>

For additional information on the offer process, please contact:

Scott Smyth

2321 North Loop Drive, Ste. 220

Ames, IA 50010-8218

Office: 515-817-2170

[scott.smyth@landuscooperative.com](mailto:scott.smyth@landuscooperative.com)

## PROPERTY ADDRESS & PARCEL INFORMATION

637 280<sup>th</sup> Street, Ogden, IA 50025 (Berkley)  
Parcel #088327313400003 (Boone County, IA)  
4.07 Acres

## LOCATION CONTACT INFORMATION

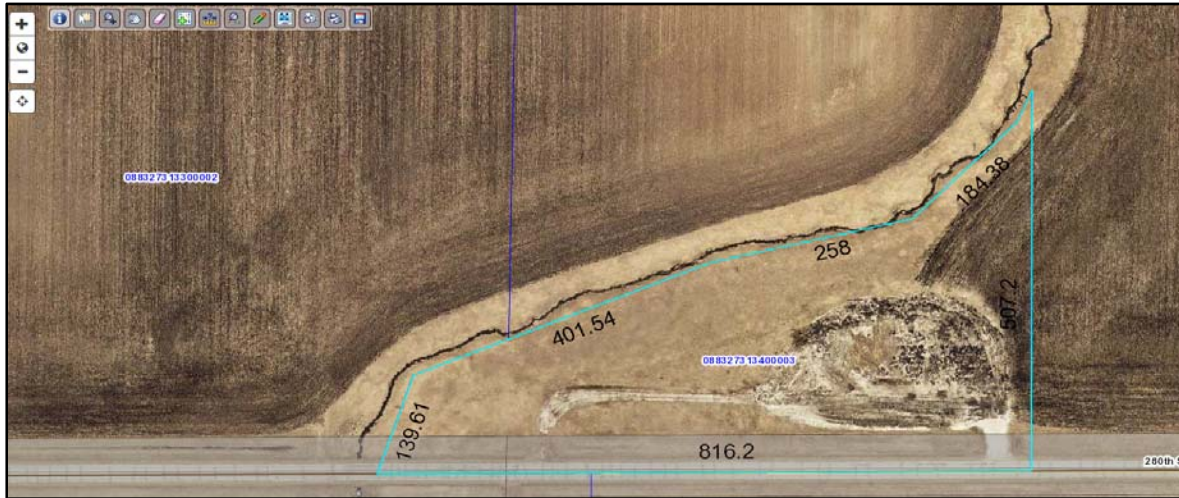
Location Manager Contact

Kevin Brant

O: 515-453-4563

[Kevin.Brant@landuscooperative.com](mailto:Kevin.Brant@landuscooperative.com)

### Property – Berkley (Ogden, IA)



### Additional Photos

