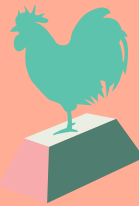


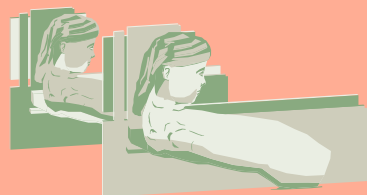
## GARDEN HIGHLIGHTS

### KATHARINA FRITSCH HAHN/COCK



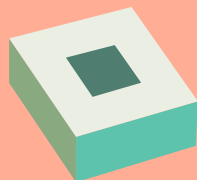
When does the ordinary become extraordinary? Towering nearly 25 feet over the park, the gigantic blue rooster is at once lifelike and completely unreal. (#6)

### MARK MANDERS SEPTEMBER ROOM ...



Enter a fantastic space where the past and present, the familiar and unfamiliar meet, where you'll become—for a brief time—a part of the artist's imagined room. (#27)

### JAMES TURRELL SKY PESHER



In a subterranean chamber known as a "Skyspace," a 16-foot opening frames a view of the infinite sky above. Take a seat inside to experience nature at its most elemental. You'll find this artwork in the Wurtele Upper Garden. (#51)

### CLAES OLDENBURG AND COOSJE VAN BRUGGEN SPOONBRIDGE AND CHERRY



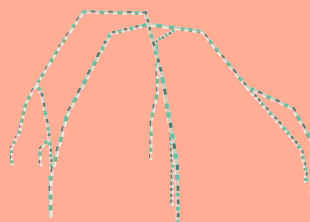
Why not a fork? A giant ice cream cone, a huge bag of fries—these are just a few of the artists' other works. Find out the story behind the beloved fountain-sculpture *Spoonbridge and Cherry* on the labels in the park or at ArtGarden.org. (#19)

### THEASTER GATES BLACK VESSEL FOR A SAINT



A statue of Saint Laurence, the patron saint of librarians and archivists, welcomes us into a small, circular temple. The sculpture serves as a sanctuary, a place open to all for gathering and reflection. (#12)

### EVA ROTHSCHILD EMPIRE



The title *Empire* suggests a great power or a vast reach. Appearing both delicate and strong, this mammoth archway meets the ground at 10 different points. Red, black, and green—the colors disrupt the way our eyes move across the form. (#22)

Learn more at [ArtGarden.org/map](https://www.artgarden.org/map).



#### ART + NATURE

Open daily, 6 am–12 midnight



#### GARDEN RULES

Please don't touch or climb on the sculptures, unless signs tell you it's okay. Help us protect the art. No smoking or alcoholic beverages. Picnicking is encouraged!



#### FREE WI-FI

Connect to Walker&Garden.



#### TOURS

Learn more on a guided tour: Saturdays and Sundays, 12 noon; Thursdays, 6 pm. Find fun facts and learn more about the sculptures at [ArtGarden.org/map](https://www.artgarden.org/map).



#### SKYLINE MINI GOLF

Play a round on the rooftop (#45)! Open May 16–September 29, Tuesday–Sunday. Get tickets inside at the Walker's Main Lobby desk.

Join the Walker as a new member and get free mini-golf tickets. Membership starts at \$5/month. [walkerart.org/membership](https://www.walkerart.org/membership) 612.375.7655



#### STEP INSIDE

The Walker Art Center is open Tuesday–Sunday; closed Mondays. Free for members and ages 0–18. Discounted admission with tickets to Skyline Mini Golf. [walkerart.org](https://www.walkerart.org) 612.375.7600



#### HUNGRY?

Esker Grove serves lunch, dinner, and weekend brunch. Open Tuesday–Sunday. Patio seating available. [eskergrove.com](https://www.eskergrove.com) 612.375.7542



#### SHOP

Visit the Walker Shop. All proceeds support the Walker's artistic and educational programs. [shop.walkerart.org](https://shop.walkerart.org)



#### SPECIAL EVENTS & PHOTOGRAPHY

To rent spaces in the Minneapolis Sculpture Garden, visit [minneapolis-parks.org](https://www.minneapolis-parks.org) or call 612.230.6400. Professional photography is welcome with an advance permit from the Park Board.

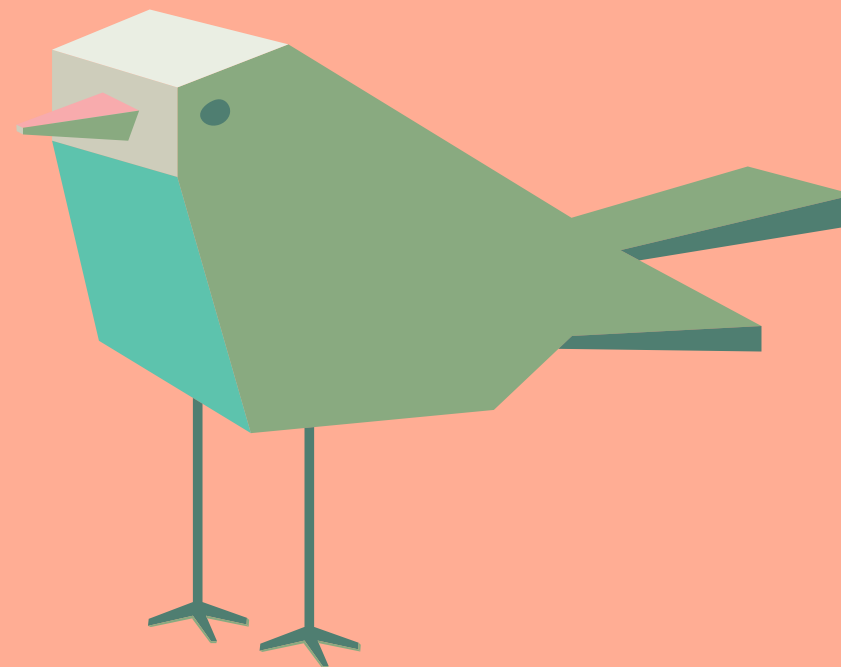
#WalkerArtCenter  
Follow us @WalkerArtCenter.



©2019 Walker Art Center  
Updated June 2019

The Minneapolis Sculpture Garden is a project of the Walker Art Center and the Minneapolis Park & Recreation Board.

# GARDEN MAP

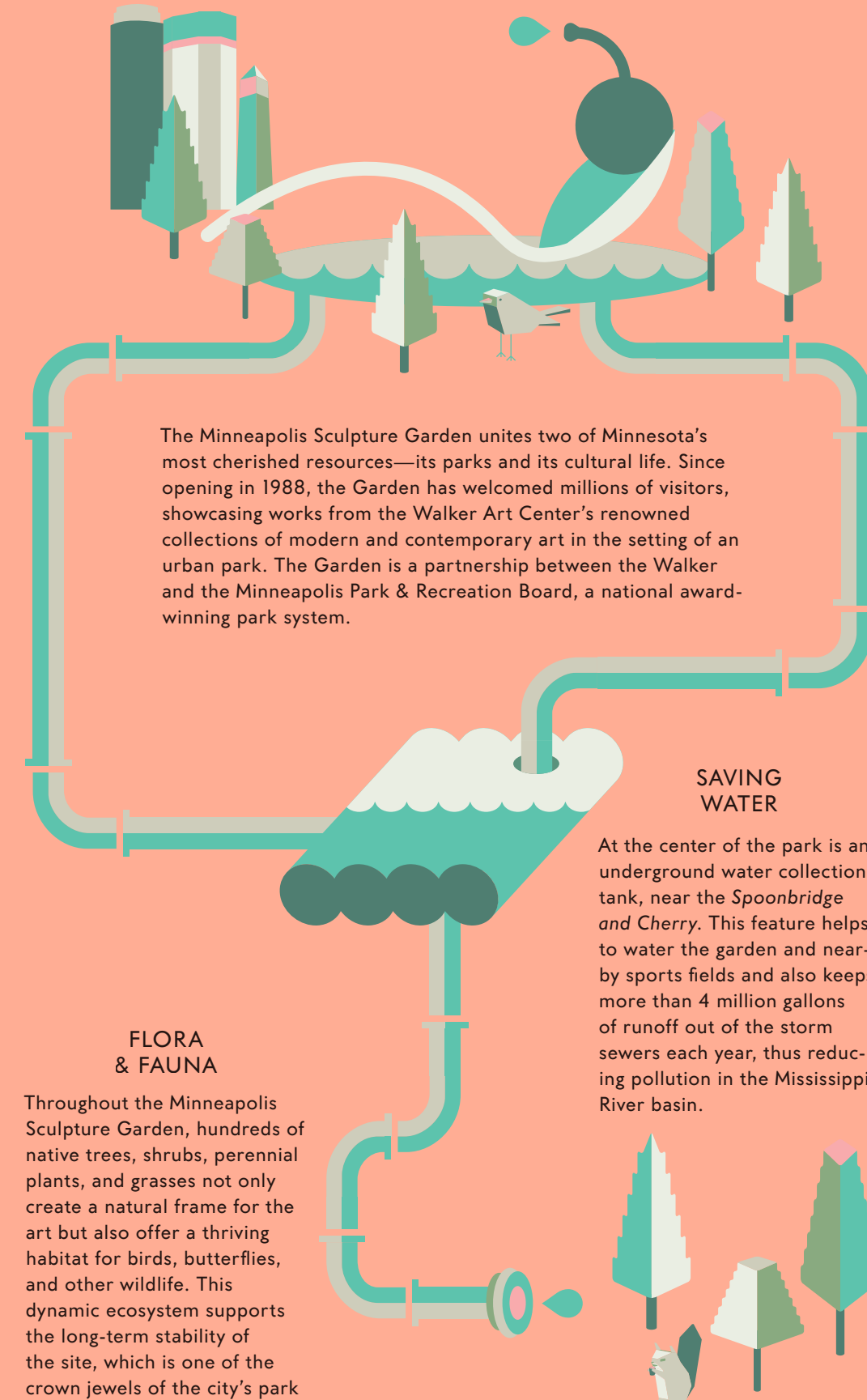


## MINNEAPOLIS SCULPTURE GARDEN & WURTELE UPPER GARDEN



WALKER

## THE HEART OF MINNEAPOLIS: A GARDEN IN THE CITY



OUTSIDE  
→

# MINNEAPOLIS SCULPTURE GARDEN

- 1

Kris Martin  
For Whom ... 2012
- 2

Alene Grossman Memorial  
Arbor and Flower Garden 1992
- 3

Louise Nevelson  
Dawn Tree 1976
- 4

Mark di Suvero  
Arikidea 1977-1982
- 5

Magdalena Abakanowicz  
Sagacious Head 6 and Sagacious Head 7 1989-1990
- 6

Katharina Fritsch  
Hahn/Cock 2013/2017
- 7

Isamu Noguchi  
Shodo Shima Stone Study 1978
- 8

Robert Indiana  
LOVE 1966-1998
- 9

Barry Flanagan  
Hare on Bell on Portland  
Stone Piers 1983
- 10

Pierre Huyghe  
Wind Chime (after  
"Dream") 1997/2009  
(on view seasonally)
- 11

Installation inspired by  
Joseph Beuys's 7000 Oaks 1997
- 12

Theaster Gates  
Black Vessel for  
a Saint 2017
- 13

Sol LeWitt  
X with Columns 1996
- 14

Deborah Butterfield  
Woodrow 1988
- 15

Philip Larson  
The Six Crystals 1988
- 16

Alexander Calder  
The Spinner 1966
- 17

Jene Highstein  
Untitled 1987-1988
- 18

Siah Armajani  
Irene Hixon Whitney  
Bridge 1988
- 19

Claes Oldenburg and  
Coosje van Bruggen  
Spoonbridge and Cherry 1985-1988
- 20

Matthew Monahan  
Hephaestus 2013
- 21

Kcho  
La soledad  
(The Loneliness)  
1999/2005
- 22

Eva Rothschild  
Empire 2011
- 23

Thomas Schütte  
Bronze Woman IV  
1998/2000
- 24

Kiki Smith  
Rapture 2001
- 25

Gary Hume  
Back of Snowman 2001
- 26

Tony Cragg  
Level Head 2007
- 27

Mark Manders  
September Room (Room  
with Two Reclining Figures  
and Composition with  
Long Verticals) 2017
- 28

Lucio Fontana  
Concetto Spaziale  
"Natura" (Spatial Concept  
"Nature") 1961
- 29

Jenny Holzer  
Selections from The  
Living Series 1989
- 30

Richard Serra  
Five Plates, Two  
Poles 1971
- 31

Tony Smith  
Amaryllis 1965/1968
- 32

Ellsworth Kelly  
Double Curve 1988
- 33

George Segal  
Walking Man 1988
- 34

Henry Moore  
Reclining Mother and  
Child 1960-1961
- 35

Henry Moore  
Standing Figure: Knife  
Edge 1961
- 36

Judith Shea  
Without Words 1988
- 37

Cowles Pavilion and  
Regis Promenade
- 38

Lazor Office  
FlatPak in the Garden  
2005/2008
- 39

Jim Hodges  
Untitled 2011
- 40

Dan Graham  
Two-way Mirror Punched  
Steel Hedge Labyrinth  
1994-1996
- 41

Ta-coumba Aiken and  
Seitu Jones Shadows at the  
Crossroads 2019  
7 Parts:  
A. Eliza Winston  
B. Time  
C. Harriet Robinson Scott  
D. Kirk Washington, Jr.  
E. Mahpiya Wicasta  
(Cloud Man)  
F. Siah Armajani  
G. Untitled (Child)
- 42

Monika Sosnowska  
Untitled (gate) 2014
- 43

Martin Puryear  
Gog & Magog (Ampersand)  
1987-1988

- KEY
- Restrooms

Restaurant/Bar

Shop

Entrances

Parking Ramp

Bus Stop

Mini Golf

DOWNTOWN  
MINNEAPOLIS

LORING  
PARK

INSIDE WALKER ART CENTER:

## WALKER TERRACES

- 44

Sol LeWitt  
Three x Four  
x Three 1984
- 45

Skyline Mini Golf  
(seasonal)
- 46

Claes Oldenburg  
Geometric Mouse—Scale A  
1969/1971
- 47

Sol LeWitt  
Arcs from four corners,  
with alternating bands of  
white and brown stone.  
The floor is bordered and  
divided horizontally and  
vertically by a black stone  
band 1988/2016

## WURTELE UPPER GARDEN

- 48

Roy Lichtenstein  
Salute to Painting  
1985-1986
- 49

Liz Larner  
X 2013
- 50

Aaron Spangler  
Bog Walker 2017
- 51

James Turrell  
Sky Peshier, 2005 2005
- 52

Alexander Calder  
Octopus 1964
- 53

Franz West  
Sitzwuste 2000
- 54

Kinji Akagawa  
Garden Seating, Reading,  
Thinking 1987/2017
- 55

Nairy Baghramian  
Privileged Points  
2011/2017
- 56

Scott Burton  
Seat-Leg Table 1986/1991
- 57

Danh Vo  
Tombstone for Phùng Vo  
from All your deeds shall  
in water be writ, but this  
in marble 2010

## SKYLINE MINI GOLF

Tee up on the Walker terraces (#45) and let the games begin! Open all summer. Get tickets inside at the Walker's Main Lobby desk.

All entrances to the Minneapolis Sculpture Garden and Wurtele Upper Garden are accessible.