

VERTICAL INTEGRATED LINEAR

By VONN Lighting

VVL12CCT/ VLV13CCT / VVL14CCT CCT / Wattage Adjustable

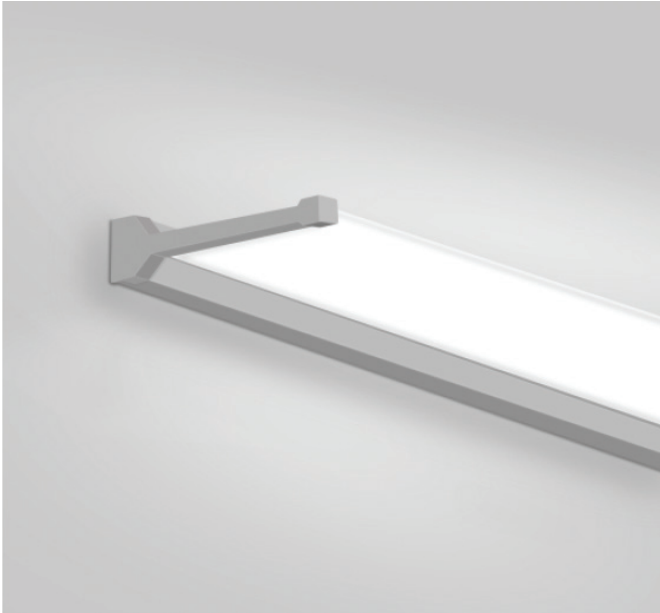


PROJECT:

TYPE:

CATALOG#:

DATE:



DESCRIPTION

The Vertical Integrated Linear offers a surface reverted design suitable for architectural lighting applications like corridors and stairwells. It features a sleek low-profile sensibility and an eye-catching, sloping silhouette profile. The luminaire can be easily mounted using simple screws or threaded studs. With wattage selectable and CCT adjustable function, it provides flexibility to illuminate various spaces. It delivers a powerful punch of up to 1600 lumen per foot with 90+CRI.

FEATURES

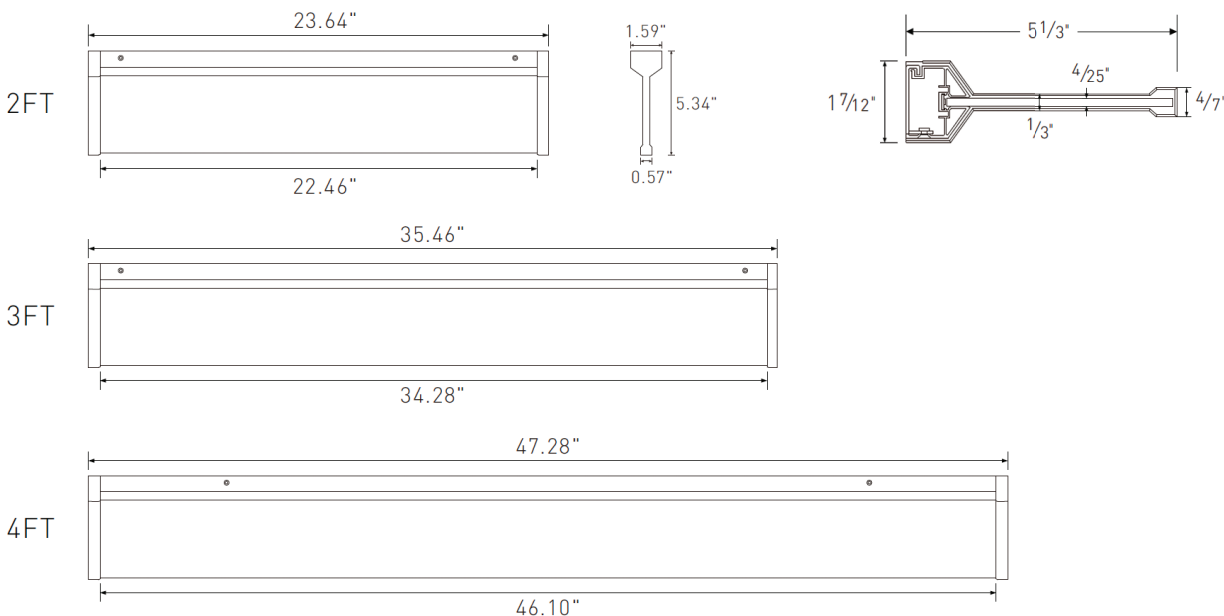
- 3 lengths & sloping silhouette
- Transparent optics
- Wattage selectable, up to 1600 lm/ft
- True color, 90+CRI
- CCT adjustable from 3000K, 3500K and 4000K

PERFORMANCE

MODEL	SIZE	WATTAGE	LUMEN PACKAGE		
			3000K	3500K (DLC QUALIFC.)	4000K (DLC QUALIFC.)
VVL12CCT	2' FT	20W	1150lm/ft, 115lm/w	1250lm/ft, 125lm/w	1200lm/ft, 120lm/w
VLV13CCT	3' FT	20W/30W/40W Selectable	750~1500lm/ft, 115lm/w	800~1650lm/ft, 125lm/w	800~1600lm/ft, 120lm/w
VVL14CCT	4' FT	20W/30W/40W Selectable	550~1150lm/ft, 115lm/w	600~1250lm/ft, 125lm/w	600~1200lm/ft, 120lm/w

*All efficacy is ±5% base on different CCT. Check the IES file to gain the accurate data.

DEMINSIONS



Theoretical Lumens: XXX LM (subject to change)

Theoretical Wattage: XXX W (subject to change)

***Please note lumens and wattage are subject to change and will be determined post production of the first articles.

*Any custom modifications are subject to minimum order quantity. (M.O.Q.)

© VONN Lighting, 2024



VERTICAL INTEGRATED LINEAR

By VONN Lighting

VVL12CCT/ VLV13CCT / VVL14CCT CCT / Wattage Adjustable



PROJECT:

TYPE:

CATALOG#:

DATE:

STRUCTURE

• Optics

Ultra-thin semi-transparent optics, enveloped in a signature sloping silhouette where the frame meets the optics.

• Finish

Extruded aluminum housing with powder coat white finish.

• Electrical

Min Internal: It is powered by Class 2 high efficiency LED driver, with a standard 1-10V dimming which continuous dims to 10% that works with many types of controls. Tested Dimmers: Lutron .
LED Driver Diva-Dvtv, Leviton IP-710-DL.
THD: <20%
Power Factor : >0.9
Input Voltage: Standard electronic drivers are UL recognized and available for 110-277V or 110-347V * AC input voltage.

• LED System

CRI: Minimum 90 color rendering index
CCT: CCT adjustable from 3000K, 3500K and 4000K with a great color consistency.
LED: Minimum 50,000h with 87.8% of lumen maintenance in 25°C ambient temperature, in compliance with IES LM-80 testing measurements.

• Approvals

- cULus listed
- DLC Qualification: DesignLights consortium qualified and classified for DLC Standard, refer to www.designlights.org for details.
- Suitable for damp locations
- Designed for indoor use only
- 5 years limited warranty

• Optional Function

Emergency: Optional high voltage 8W emergency LED driver EM-H08170-LBF can be provided. When AC power fails, it immediately switches to the emergency mode, operating for lighting up to 120 minutes. When AC power is restored, it automatically returns to the charging mode which meets critical life-safety lighting requirements. For more info or spec sheet, please visit our website or contact sales.
Option Emergency Lumen Output:



FIXTURE EFFICACY	OUTPUT POWER 8W
100lm/w	800 Lumens

OPTIONAL

OPTIONAL FUNCTION

☐ WALL MOUNT ACCESSORY SET (ORDER SEPARATED)

☐ LED EMERGENCY DRIVER (ORDER SEPARATED)

*Additional cost and/or lead time on customized fixtures may apply. Some fixtures require an MOQ. Please contact your sales rep for more information.

SAMPLE ORDERING SKU

1	2	3	4	5	6	7
VSL	SIZE	CCT	LUMENS	WATTAGE	DIMMING	VOLTAGE
1 - SKU	2 - SIZE	3 - CCT SELECTIBLE	4 - LUMENS	5 - WATTAGE ADJUSTABLE	6 - DIMMING	7 - VOLTAGE
VVL12CCT	2: 2' FT	3000K 3500K 4000K	2400LM	20W / 30W / 40W	1-10V	110-277V
VLV13CCT	3: 3' FT	3000K 3500K 4000K	2400lm(20W)/3600lm(30W)/4800lm(40W)	20W / 30W / 40W	1-10V	110-277V
VVL14CCT	4: 4' FT	3000K 3500K 4000K	2400lm(20W)/3600lm(30W)/4800lm(40W)	20W / 30W / 40W	1-10V	110-277V

Theoretical Lumens: XXX LM (subject to change)

Theoretical Wattage: XXX W (subject to change)

***Please note lumens and wattage are subject to change and will be determined post production of the first articles.

*Any custom modifications are subject to minimum order quantity. (M.O.Q.)

© VONN Lighting, 2024

VONN, LLC.

3323 NE 163rd St, PH-706
 North Miami Beach, FL 33160
 WWW.VONN.COM 888.604.8666

VONN, LLC. reserves the right to make any design changes for continuous improvement which will not affect the overall appearance or performance.



VERTICAL INTEGRATED LINEAR

By VONN Lighting

VVL12CCT/ VLV13CCT / VVL14CCT CCT / Wattage Adjustable

VONN

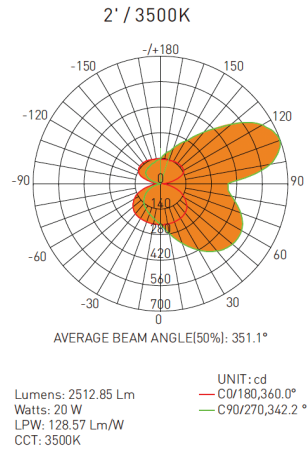
PROJECT:

TYPE:

CATALOG#:

DATE:

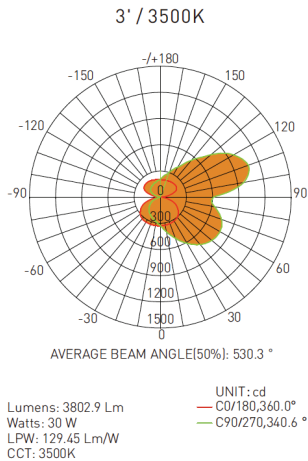
DISTRIBUTION DIAGRAM



Zonal Flux Diagram						
T	C0	C45	C90	C135	C180	
10	224.9	260.4	278.2	260.2	224.7	
20	223.0	303.3	347.6	303.8	223.2	
30	219.4	341.2	421.9	345.3	221.5	
40	209.9	369.1	482.6	378.7	215.3	
50	187.3	375.2	516.3	391.0	197.7	
60	151.2	351.3	514.3	373.0	166.9	
70	103.0	299.8	469.0	324.0	118.7	
80	43.46	236.7	398.2	249.3	50.06	
90	7.271	207.4	372.8	202.8	3.729	
100	53.79	302.1	611.9	293.1	46.49	
110	116.7	370.3	696.7	366.9	108.8	
120	145.2	364.3	646.1	364.2	140.2	
130	150.2	323.4	507.3	327.7	149.4	
140	147.6	267.5	370.0	272.0	150.2	
150	142.7	216.6	268.7	219.6	146.6	
160	137.6	181.8	210.5	186.2	141.7	
170	136.0	157.7	170.9	157.2	138.7	
180	136.0	136.0	136.0	136.0	136.0	
DEG	LUMINOUS INTENSITY:cd					

Zonal Lumens		
T	Φ total	
0-10	21.83	
10-20	89.49	
20-30	206.0	
30-40	370.8	
40-50	574.7	
50-60	796.0	
60-70	1005	
70-80	1171	
80-90	1289	
90-100	1432	
100-110	1649	
110-120	1892	
120-130	2015	
130-140	2269	
140-150	2383	
150-160	2457	
160-170	2449	
170-180	2513	
UNIT: lm		

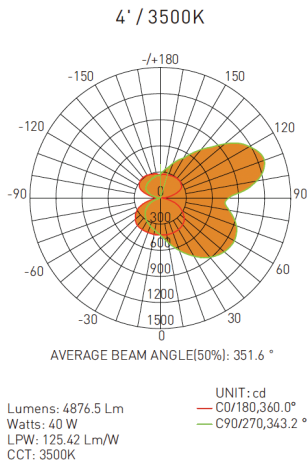
Luminance cd/[m2]			
G(DEG)	C0/180	C90/270	
85	2408	42710	
80	2502	22934	
75	2773	16727	
70	3012	13714	
65	3007	11767	
60	3023	10285	
55	2970	9059	
50	2913	8303	
45	2849	7119	



Zonal Flux Diagram						
T	C0	C45	C90	C135	C180	
10	327.0	376.9	403.0	380.7	331.1	
20	322.4	434.5	501.6	445.4	331.2	
30	315.6	487.4	610.2	510.0	331.4	
40	301.1	528.5	709.0	567.0	324.6	
50	270.2	543.4	769.8	594.9	301.4	
60	221.4	516.6	789.7	578.0	257.9	
70	153.7	452.4	745.3	516.0	185.8	
80	65.59	367.1	633.0	419.2	79.22	
90	10.93	327.3	611.0	362.3	6.695	
100	80.27	458.6	968.4	497.2	74.23	
110	173.8	552.4	1072	592.1	171.0	
120	215.3	535.8	972.4	568.2	217.3	
130	221.6	476.1	757.5	499.7	228.5	
140	217.8	391.5	553.5	410.8	227.4	
150	211.5	317.5	398.3	327.9	220.8	
160	204.9	267.5	309.8	275.7	212.4	
170	202.7	231.9	250.9	232.2	207.1	
180	202.5	202.5	202.5	202.5	202.5	
DEG	LUMINOUS INTENSITY:cd					

Zonal Lumens		
T	Φ total	
0-10	31.83	
10-20	130.3	
20-30	299.7	
30-40	540.2	
40-50	839.9	
50-60	1170	
60-70	1491	
70-80	1752	
80-90	1943	
90-100	2176	
100-110	2512	
110-120	2879	
120-130	3197	
130-140	3440	
140-150	3610	
150-160	3721	
160-170	3783	
170-180	3803	
UNIT: lm		

Luminance cd/[m2]			
G(DEG)	C0/180	C90/270	
85	3653	67819	
80	3777	36453	
75	4161	26822	
70	4493	21791	
65	4551	18383	
60	4429	15793	
55	4315	13717	
50	4203	11976	
45	4090	10537	



Zonal Flux Diagram						
T	C0	C45	C90	C135	C180	
10	428.0	488.8	519.1	489.2	424.6	
20	425.5	563.5	640.8	566.9	421.0	
30	418.3	636.4	770.2	646.8	419.7	
40	399.2	687.5	887.5	708.3	410.5	
50	355.2	705.3	961.5	738.4	378.7	
60	286.0	663.9	983.1	711.6	320.2	
70	195.1	576.6	929.4	637.5	228.5	
80	83.96	465.8	803.3	522.3	97.71	
90	16.76	414.9	786.3	452.3	7.746	
100	104.3	571.3	1124	586.8	92.95	
110	223.3	689.7	1273	702.4	214.3	
120	281.5	686.0	1185	711.2	280.1	
130	297.2	622.0	973.0	648.9	305.1	
140	297.6	528.1	729.5	553.2	310.6	
150	291.0	433.8	531.8	444.1	303.7	
160	281.6	367.9	426.6	380.2	291.7	
170	275.5	315.4	340.1	315.9	281.5	
180	269.6	269.6	269.6	269.6	269.6	
DEG	LUMINOUS INTENSITY:cd					

Zonal Lumens		
T	Φ total	
0-10	41.35	
10-20	169.2	
20-30	389.0	
30-40	699.7	
40-50	1084	
50-60	1504	
60-70	1906	
70-80	2233	
80-90	2476	
90-100	2762	
100-110	3174	
110-120	3636	
120-130	4052	
130-140	4379	
140-150	4611	
150-160	4764	
160-170	4850	
170-180	4877	
UNIT: lm		

Luminance cd/[m2]			
G(DEG)	C0/180	C90/270	
85	4834	85979	
80	4835	46260	
75	5283	33747	
70	5703	27174	
65	5816	22872	
60	5720	19661	
55	5627	17062	
50	5526	14958	
45	5412	13157	

Theoretical Lumens: XXX LM (subject to change)

Theoretical Wattage: XXX W (subject to change)

***Please note lumens and wattage are subject to change and will be determined post production of the first articles.

*Any custom modifications are subject to minimum order quantity. (M.O.Q.)

© VONN Lighting, 2024

