

SLIM CURVE SERIES DOT6-D10S

VTSLVOT06D10BL

By VONN Lighting

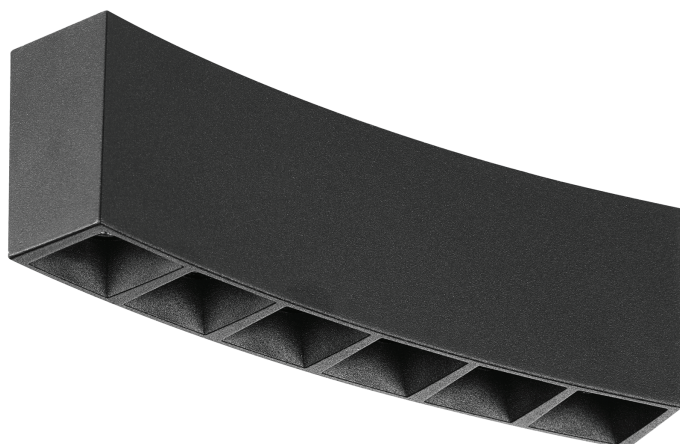
VONN

PROJECT:

TYPE:

CATALOG#:

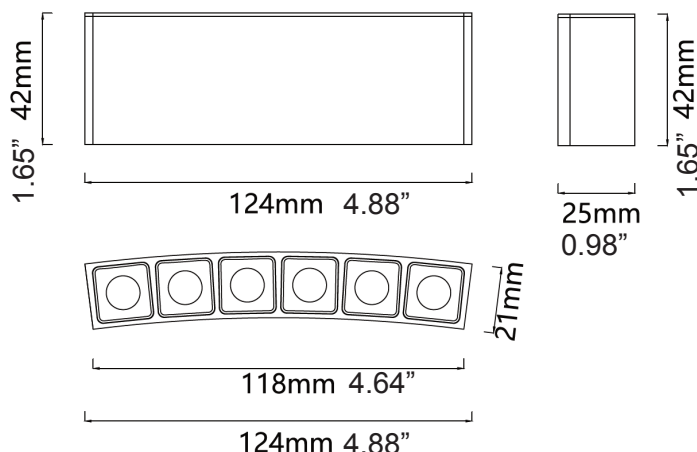
DATE:



DESCRIPTION

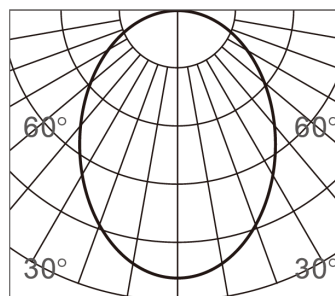
The perfect choice for those who appreciate the concept of an invisible light source, offering comfortable, glare-free illumination with multiple beam options. Its elegant body coating and anti-glare cover add a touch of sophistication, while the external dimming interface is compatible with Triac, 0/1-10V, and Dali systems, ensuring versatile control over the lighting ambiance.

DIMENSIONS



PHOTOMETRICS

Diffuse



h(m)	E(lx)	Φ(m)
1	2873	Φ0.33
2	718	Φ0.67
3	319	Φ1.01
4	179	Φ1.34
5	114	Φ1.68

SPECIFICATION

MODEL	SIZE	WATTAGE	CCT	LUMENS	CRI	BEAM ANGLE
VTSLVOT06D10BL	124mm x 21mm x 42mm (4.88" x 0.82" x 1.65")	8W	2700K/3000K/4000K	650Lm	>90	20D

Theoretical Lumens: XXX LM (subject to change)

Theoretical Wattage: XXX W (subject to change)

***Please note lumens and wattage are subject to change and will be determined post production of the first articles.

*Any custom modifications are subject to minimum order quantity. (M.O.Q.)

© VONN Lighting, 2024

VONN, LLC.
3323 NE 163rd St, PH-706
North Miami Beach, FL 33160
WWW.VONN.COM 888.604.8666

VONN, LLC. reserves the right to make any design changes for continuous improvement which will not affect the overall appearance or performance.

