

SLIM SERIES HALO HEAD DOTS/DIFFUSER VONN

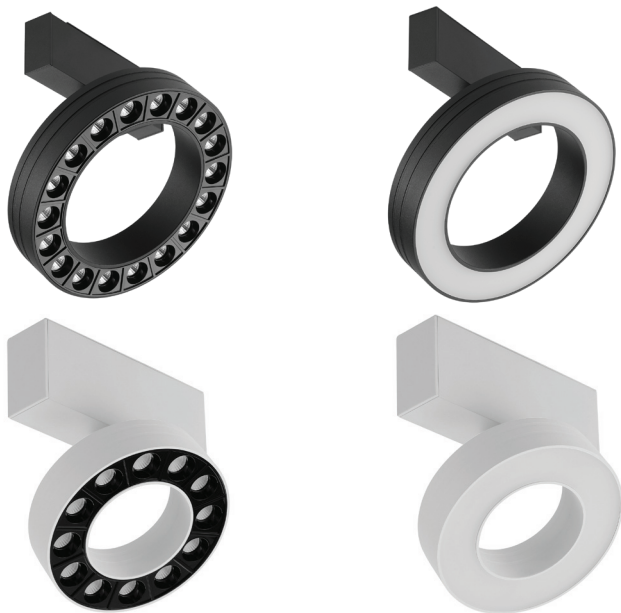
VTSLHD18BL / VTSLHL16BL / VTSLHD12BL / VTSLHL12BL By VONN Lighting

PROJECT:

TYPE:

CATALOG#:

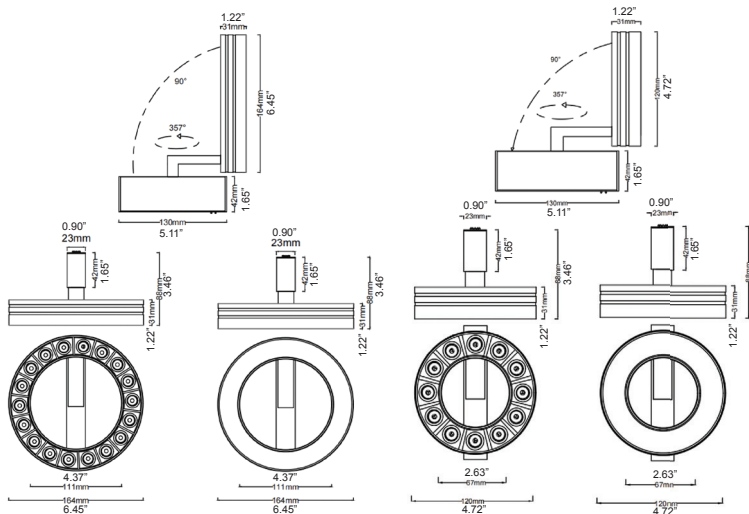
DATE:



DESCRIPTION

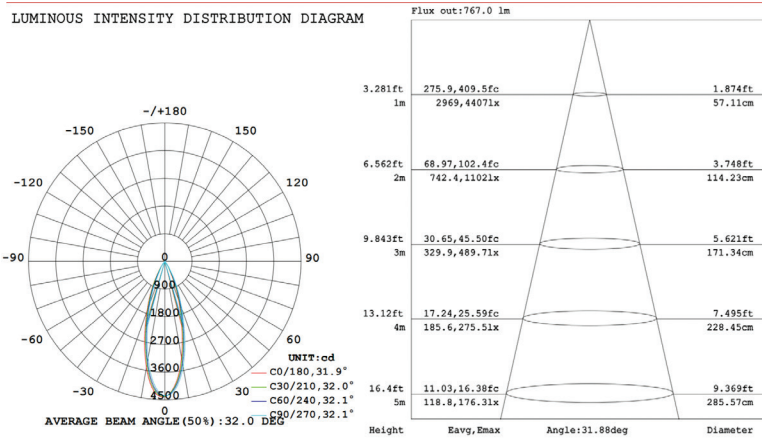
This luminaire embodies the concept of an invisible source of illumination, offering a soft and comforting glow without the harshness of glare. Its radiant light fills the space with warmth, gently caressing every corner, while remaining effortlessly discreet. Complemented by an anti-glare cover, this light creates a serene atmosphere that invites relaxation, and a touch of timeless elegance.

DIMENSIONS



PHOTOMETRICS

LUMINOUS INTENSITY DISTRIBUTION DIAGRAM



SPECIFICATION

MODEL	SIZE	WATTAGE	CCT	LUMENS	CRI	BEAM ANGLE
VTSLHD18BL	L: 165MM x W: 165MM x H: 102MM (L: 6.50" x W: 6.50" x H: 4.02")	18W	2700K/3000K/4000K	1565Lm	>90	20/34/48D
VTSLHL16BL	L: 164MM x W: 164MM x H: 102MM (L: 6.46" x W: 6.46" x H: 4.02")	18W	2700K/3000K/4000K	690Lm	>90	Diffuse
VTSLHD12BL	L: 120MM x W: 120MM x H: 102MM (L: 4.72" x W: 4.72" x H: 4.02")	12W	2700K/3000K/4000K	950Lm	>90	20/34/48D
VTSLHL12BL	L: 120MM x W: 120MM x H: 120MM (L: 4.72" x W: 4.72" x H: 4.02")	12W	2700K/3000K/4000K	470Lm	>90	Diffuse

Theoretical Lumens: XXX LM (subject to change)

Theoretical Wattage: XXX W (subject to change)

***Please note lumens and wattage are subject to change and will be determined post production of the first articles.

*Any custom modifications are subject to minimum order quantity. (M.O.Q.)

© VONN Lighting, 2024

VONN, LLC.

3323 NE 163rd St. PH-706
North Miami Beach, FL 33160

WWW.VONN.COM 888.604.8666

VONN, LLC. reserves the right to make any design changes for continuous improvement which will not affect the overall appearance or performance.

