

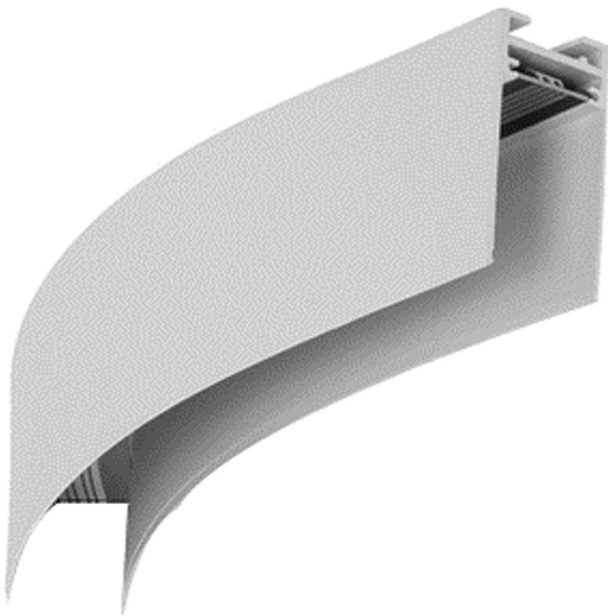
CURVE 1/8 TRACK

VTSCURVY45D9BL

By VONN Lighting



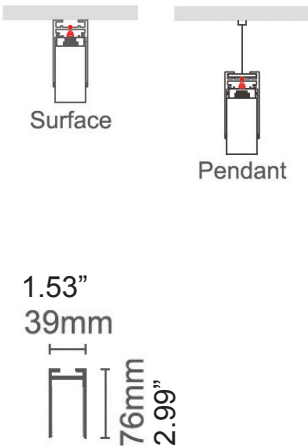
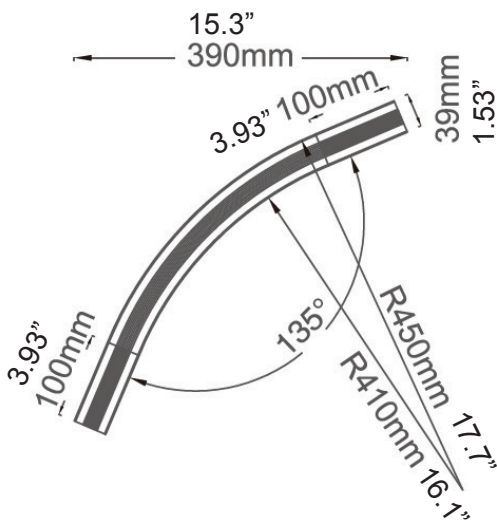
PROJECT:	TYPE:	CATALOG#:	DATE:
----------	-------	-----------	-------



DESCRIPTION

The Curve Track Series transforms the magnetic track system from simple straight lines into elegant, curvaceous designs. The focus is on creating stunning shapes with graceful lines. Available in various sizes and colors. The Curve Track Series seamlessly integrates with straight profiles to craft unique and captivating lighting scenes.

DIMENSIONS



SPECIFICATION

MODEL	SIZE	INSTALLATION	POWER
VTSCURVY45D9BL	900mm x 39mm x 76mm (35.4" x 1.53" x 2.99")	SURFACE / PENDANT	200W MAX

Theoretical Lumens: XXX LM (subject to change)
Theoretical Wattage: XXX W (subject to change)
***Please note lumens and wattage are subject to change and will be determined post production of the first articles.
*Any custom modifications are subject to minimum order quantity. (M.O.Q.)

© VONN Lighting, 2024

VONN, LLC.
3323 NE 163rd St. PH-706
North Miami Beach, FL 33160
WWW.VONN.COM 888.604.8666

VONN, LLC. reserves the right to make any design changes for continuous improvement which will not affect the overall appearance or performance.

