

# SLIM RECESSED FLAT PANEL By VONN Lighting

## VSR44CCT / VSR84CCT/ VSR46CCT / VSR86CCT Recessed LED Linear

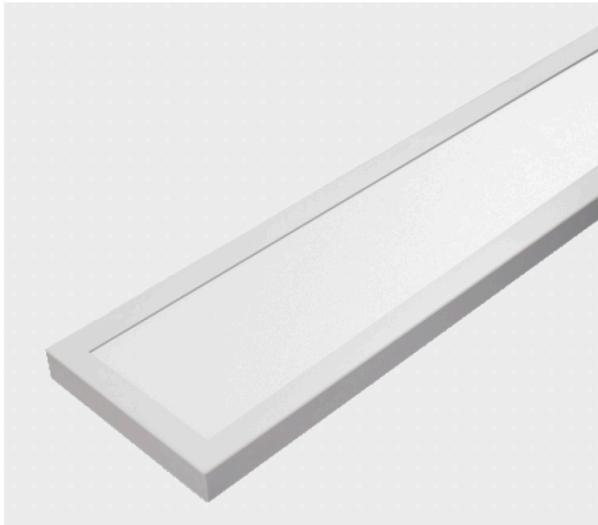


PROJECT:

TYPE:

CATALOG#:

DATE:



### DESCRIPTION

The Slim Recessed Flat Panel LED is available in popular widths of 4" and 6" inch and lengths up to 8' feet, delivering striking linear illumination for various applications. With wattage-selectable and CCT-adjustable technology, it offers exceptional adaptability. Compatible with most ceiling types, it's an excellent solution for offices, schools, hospitals, corridors, light industrial spaces, or any location where sleek and stylish lighting is desired.

### FEATURES

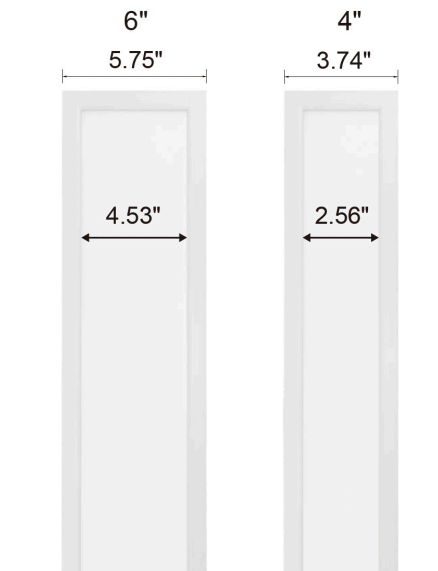
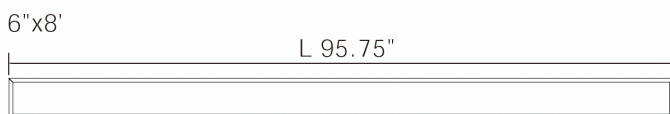
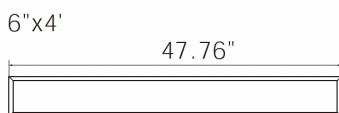
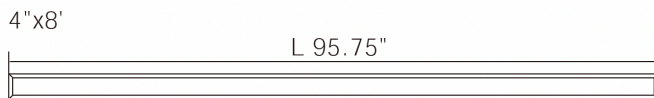
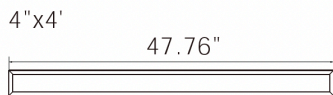
- Slim and linear design
- 2ft, 4ft and 8ft lengths, up to 1000lm/ft
- Available in 4", 6" width
- Wattage selectable (50%/75%/100%)
- CCT adjustable from 3000K, 3500K and 4000K

### PERFORMANCE

WIDTH	LENGTH	WATTAGE SELECTABLE	EFFICACY @4000K	LUMEN @4000K
4"	2 ft	20W/15W/10W	85lm/w,850lm/ft	1700lm
	4 ft	40W/30W/20W	90lm/w,900lm/ft	3600lm
	8 ft	80W/60W/40W	90lm/w,900lm/ft	7200lm
6"	2 ft	20W/15W/10W	100lm/w,1000lm/ft	2000lm
	4 ft	40W/30W/20W	100lm/w,1000lm/ft	4000lm
	8 ft	80W/60W/40W	100lm/w,1000lm/ft	8000lm

All efficacy is  $\pm 5\%$  base on different CCT and wattage. Check the IES file to gain the accurate data.

### DIMENSIONS



Theoretical Lumens: XXX LM (subject to change)

Theoretical Wattage: XXX W (subject to change)

\*\*\*Please note lumens and wattage are subject to change and will be determined post production of the first articles.

\*Any custom modifications are subject to minimum order quantity. (M.O.Q.)

© VONN Lighting, 2025



# SLIM RECESSED FLAT PANEL

By VONN Lighting

## VSR44CCT / VSR84CCT / VSR46CCT / VSR86CCT Recessed LED Linear



PROJECT:

TYPE:

CATALOG#:

DATE:

## PRODUCT PERFORMANCE

### • Construction

Extruded aluminum housing

### • Electrical

LED Driver: External  
 Dimming: Powered by high efficiency LED driver, with a standard 1-10V dimming which continuous dims to 10% that works with many types of controls. Tested Dimmers: Lutron @ Diva-Dvtv, Leviton @ IP-710-DL.  
 THD: <20%  
 Power Factor : >0.9  
 Input Voltage: Standard electronic driver is UL recognized and available for 120-277V AC.

### • LED System

CRI: Minimum 80 color rendering index  
 CCT: Choice of 3000K, 3500K, 4000K, 5000K color temperature or CCT adjustable from 3000K, 3500K and 4000K with a great color consistency.  
 LED: Life minimum 50,000h with 87.8% of lumen maintenance in 25°C ambient temperature, in compliance with IES LM-80 testing measurements.  
 Thermal : Aluminum housing acting as the heat sink to maximize life.

### • Mounting

Recessed

### • Approvals

- cULus listed for damp locations
- 5-year Limited Warranty

### • Optional Function

Emergency: Optional high voltage 8W emergency LED driver EM-H series can be provided. When AC power fails, it immediately switches to the emergency mode, operating for lighting up to 120 minutes. When AC power is restored, it automatically returns to the charging mode which meets critical life-safety lighting requirements. For more info or spec sheet, please visit our website or contact sales.



Sensor: We can provide a factory-installed integrated sensor system for multi-level control based on motion and/or daylight contribution with BR1810BI-level & daylight harvest microwave sensor from SHARKWARD. For more info or spec sheet, please contact sales.



## SAMPLE ORDERING SKU

1	2	3	4	5	6	7
VSR	44	CCT	LUMENS	WATTAGE	DIMMING	VOLTAGE
1 - SKU	2 - SIZE	3 - CCT ADJUST	4 - LUMENS	5 - WATTAGE ADJUST	6 - DIMMING	7 - VOLTAGE
VSR24CCT	24: 2' x 4"	3000K/3500K/4000K	1700Lm / 1275Lm / 850Lm	20W / 15W / 10W	1-10V	110-277V
VSR44CCT	44: 4' x 4"	3000K/3500K/4000K	3600Lm / 2700Lm / 900Lm	40W / 30W / 20W	1-10V	110-277V
VSR84CCT	84: 8' x 4"	3000K/3500K/4000K	7200Lm / 5400Lm / 3600Lm	80W / 60W / 40W	1-10V	110-277V
VSR26CCT	26: 2' x 6"	3000K/3500K/4000K	2000Lm / 1500Lm / 1000Lm	20W / 15W / 10W	1-10V	110-277V
VSR46CCT	46: 4' x 6"	3000K/3500K/4000K	4000Lm / 3000Lm / 2000Lm	40W / 30W / 20W	1-10V	110-277V
VSR86CCT	86: 8' x 6"	3000K/3500K/4000K	8000Lm / 6000Lm / 4000Lm	80W / 60W / 40W	1-10V	110-277V

\*ANY CUSTOM MODIFICATION Will SUBJECT TO MINIMUM ORDER QUANTITY. (M.O.Q.)

Theoretical Lumens: XXX LM (subject to change)

Theoretical Wattage: XXX W (subject to change)

\*\*\*Please note lumens and wattage are subject to change and will be determined post production of the first articles.

\*Any custom modifications are subject to minimum order quantity. (M.O.Q.)

© VONN Lighting, 2025



# SLIM RECESSED FLAT PANEL By VONN Lighting

## VSR44CCT / VSR84CCT/ VSR46CCT / VSR86CCT Recessed LED Linear



PROJECT:

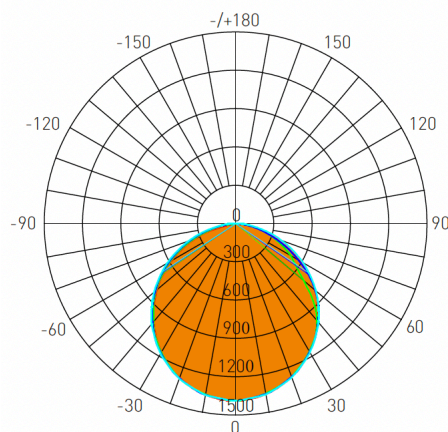
TYPE:

CATALOG#:

DATE:

### DISTRIBUTION DIAGRAM

4"x4'



AVERAGE BEAM ANGLE(50%): 110.2°

Lumens: 3773.4 Lm  
Watts: 40 W  
LPW: 94.34 Lm/W  
CCT: 3500K

UNIT: cd  
C0/180, 111.1°  
C30/210, 105.7°  
C60/240, 111.3°  
C90/270, 112.8°

Zonal Flux Diagram

T	C0	C45	C90	C135	C180
5	1378	1372	1373	1374	1381
10	1357	1352	1359	1356	1362
15	1324	1322	1322	1328	1331
20	1279	1274	1284	1279	1287
25	1224	1223	1225	1226	1232
30	1159	1158	1166	1158	1165
35	1085	1084	1088	1074	1089
40	1002	1004	1010	958.2	1003
45	912.5	885.3	916.5	780.5	909.0
50	815.0	735.3	822.7	609.3	807.8
55	711.5	600.0	716.0	490.2	698.2
60	599.9	498.1	609.2	394.6	581.3
65	481.9	403.6	494.7	307.4	457.1
70	361.4	305.2	380.1	221.3	331.1
75	234.4	211.9	270.0	140.1	168.8
80	131.0	122.2	159.9	75.20	59.38
85	28.69	51.55	81.29	29.13	10.88
90	1.227	4.243	2.669	2.701	1.005

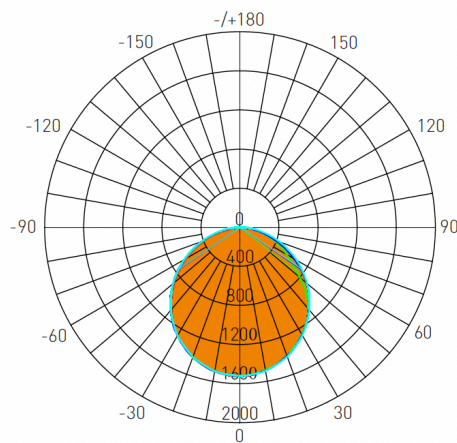
Zonal Lumens

T	φ total
0-5	32.98
5-10	130.7
10-15	289.8
15-20	504.6
20-25	767.9
25-30	1070
30-35	1402
35-40	1751
40-45	2104
45-50	2443
50-55	2757
55-60	3038
60-65	3279
65-70	3472
70-75	3616
75-80	3710
80-85	3759
85-90	3773

Luminance cd/(m2)

G(°)	C0/180	C90/270
85	4286	12145
80	9823	11991
75	11791	13583
70	13759	14470
65	14849	15240
60	15624	15865
55	16153	16254
50	16510	16666
45	16803	16877

6"x4'



AVERAGE BEAM ANGLE(50%): 110.2°

Lumens: 4180.4 Lm  
Watts: 40 W  
LPW: 104.51 Lm/W  
CCT: 3500K

UNIT: cd  
C0/180, 110.8°  
C30/210, 107.0°  
C60/240, 111.2°  
C90/270, 111.8°

Zonal Flux Diagram

T	C0	C45	C90	C135	C180
5	1513	1507	1508	1510	1518
10	1489	1485	1494	1491	1498
15	1452	1452	1452	1461	1464
20	1402	1399	1411	1408	1415
25	1340	1341	1345	1349	1354
30	1268	1269	1278	1271	1280
35	1185	1186	1192	1177	1195
40	1094	1098	1105	1067	1100
45	995.5	978.4	1002	914.6	995.9
50	889.3	838.9	898.4	746.0	884.3
55	777.1	689.3	783.0	605.3	764.9
60	659.0	562.4	667.6	484.8	639.7
65	536.6	454.9	546.6	376.9	511.3
70	413.3	349.1	425.5	276.8	382.3
75	287.0	244.2	309.4	186.1	238.8
80	164.7	144.4	193.3	107.6	79.40
85	40.56	63.05	98.59	46.12	17.81
90	3.175	4.753	3.887	2.886	0.5494

Zonal Lumens

T	φ total
0-5	36.22
5-10	143.5
10-15	318.2
15-20	553.9
20-25	842.6
25-30	1174
30-35	1537
35-40	1917
40-45	2303
45-50	2677
50-55	3025
55-60	3337
60-65	3605
65-70	3824
70-75	3990
75-80	4102
80-85	4162
85-90	4180

Luminance cd/(m2)

G(°)	C0/180	C90/270
85	3368	8185
80	6864	8054
75	8024	8650
70	8745	9002
65	9187	9358
60	9536	9662
55	9803	9878
50	10011	10113
45	10188	10249

Theoretical Lumens: XXX LM (subject to change)

Theoretical Wattage: XXX W (subject to change)

\*\*\*Please note lumens and wattage are subject to change and will be determined post production of the first articles.

\*Any custom modifications are subject to minimum order quantity. (M.O.Q.)

© VONN Lighting, 2025

VONN, LLC.

3323 NE 163rd St. PH-706  
North Miami Beach, FL 33160

WWW.VONN.COM 888.604.8666

VONN, LLC. reserves the right to make any design changes for continuous improvement which will not affect the overall appearance or performance.

