

VELLA 3" DEEP ANTI-GLARE DOWNLIGHT

VM060-VF64RF01

By VONN Lighting

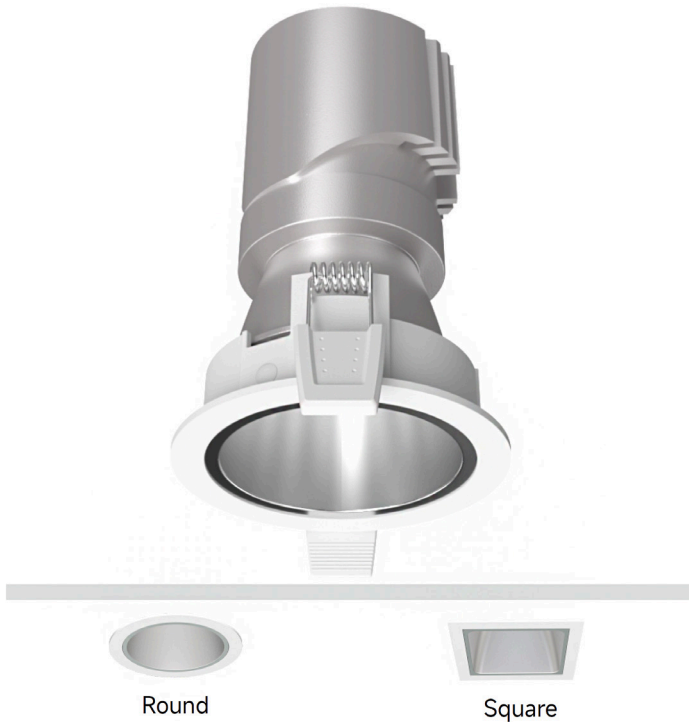
VONN

PROJECT:

TYPE:

CATALOG#:

DATE:




DESCRIPTION

The VELLA 3" Deep Anti-Glare Series, features a deep recessed mounting ring that enables a 48° cut-off for excellent glare control. The luminaires blend seamlessly into the ceiling layout, embodying the philosophy of "light instead of luminaires." With a highly modular design available in both round and square options, a honeycomb filter can also be added to maximize visual comfort.

FEATURES

- Elegant and compact in style, yet versatile in use.
- Precise light control, UGR <9.
- Super modular design, replacable LED module, mounting ring, beam lens and anti-glare accessories without any needs for tools.

SPECIFICATION

	VM060	
WATTAGE	10 W	15 W
LUMEN OUTPUT	962 LM	1284 LM
BEAM OPTICS	Narrow Spot: 15°, Spot: 24°, Flood: 38°, Wide Flood: 55°	
COLOR TEMP.	Static White: 2700K, 3000K, 3500K, 4000K Dim to Warm: 2000K - 3000K	
COLOR QUALITY	80+/90+, 3-step SDCM	
INPUT WATTAGE	10 W	15 W
INPUT VOLTAGE	120/277V input, 50/60Hz	
POWER FACTOR	Greater than 0.9	
DIMMING TYPE	Triac dimming & 0-10V dimming range: 1%-100%	
CEILING THICKNESS	 3/4" - 25/32" (1mm-20mm) Spring clip	
INSTALLATION	New Construction, Remodel, IC Rated Housing	
LISTINGS	ETL Listed to US and Canadian standards for damp locations. (IC) ETL listed for direct contact w/insulation.	
WARRANTY	5 year limited warranty	
AMBIENT OPERATING TEMPERATURE	-20°C to 40°C	
SYSTEM RATING	80% of initial lumens at 50000 hours (L80)	

Theoretical Lumens: XXX LM (subject to change)

Theoretical Wattage: XXX W (subject to change)

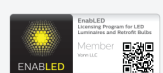
***Please note lumens and wattage are subject to change and will be determined post production of the first articles.

*Any custom modifications are subject to minimum order quantity. (M.O.Q.)

© VONN Lighting, 2025

VONN, LLC.
3323 NE 163rd St, PH-706
North Miami Beach, FL 33160
WWW.VONN.COM 888.604.8666

VONN, LLC. reserves the right to make any design changes for continuous improvement which will not affect the overall appearance or performance.



VELLA 3" DEEP ANTI-GLARE DOWNLIGHT

VM060-VF64RF01

By VONN Lighting

VONN

PROJECT:

TYPE:

CATALOG#:

DATE:

ORDERING INFORMATION

VM060	VF	6	1	-	-	-	-	-	-	-	-
Led Module	Trim	Dimensions of trim	Application	Trim Shape	Trim Style	Flangeless Trim	Safety Standard	Voltage	Lumen Output	Dimming Methods	Including Housing
VM060	VF	6 Nominal size: 60mm	4 Deep anti-glare	RF Round fixed	01 Standard	F Flangeless Trim	A American standard	277 120-277V	L08 800lm	V 0-10V	C New Construction
				SF Square fixed				120 100-120V	L12 1200lm	T Triac	R Remodel
										X 0-10V/Triac	H Housing

ACCESSORIES (TO BE ORDERED SEPARATELY)

FOR INSTALLATION CONSULT THE INSTRUCTION SHEET

OPTICAL ACCESSORY

☐ HONEYCOMB FILTER

VM060-H



☐ SOFT LENS

VM060-L



LUMEN MULTIPLIERS

CCT	MULTIPLIER
2700K	0.95
3000K	1.00
3500K	1.03
4000K	1.06

CRI	MULTIPLIER
80+	1.23
90+	1.00

STANDARD TRIM	MULTIPLIER
VF64RF01 (Round fixed)	0.98
VF64SF01 (Square fixed)	1.00

Applying Lumen Multipliers to Calculate Delivered Lumens

Base Fixture Delivered Lumens (from PHOTOMETRIC DATA)	x	CCT Multiplier	x	CRI Multiplier	x	TRIM Multiplier	=	Delivered Lumens for Desired Fixture
STANDARD TRIM Example: VM060-VF64RF01 3500K 80+								
894.97 lm	x	1.03	x	1.23	x	0.98	=	1109.9 lm

Theoretical Lumens: XXX LM (subject to change)

Theoretical Wattage: XXX W (subject to change)

***Please note lumens and wattage are subject to change and will be determined post production of the first articles.

*Any custom modifications are subject to minimum order quantity. (M.O.Q.)

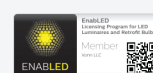
© VONN Lighting, 2025

VONN, LLC.

3323 NE 163rd St. PH-706
North Miami Beach, FL 33160

WWW.VONN.COM 888.604.8666

VONN, LLC. reserves the right to make any design changes for continuous improvement which will not affect the overall appearance or performance.



VELLA 3" DEEP ANTI-GLARE DOWNLIGHT

VM060-VF64RF01

By VONN Lighting

VONN

PROJECT:

TYPE:

CATALOG#:

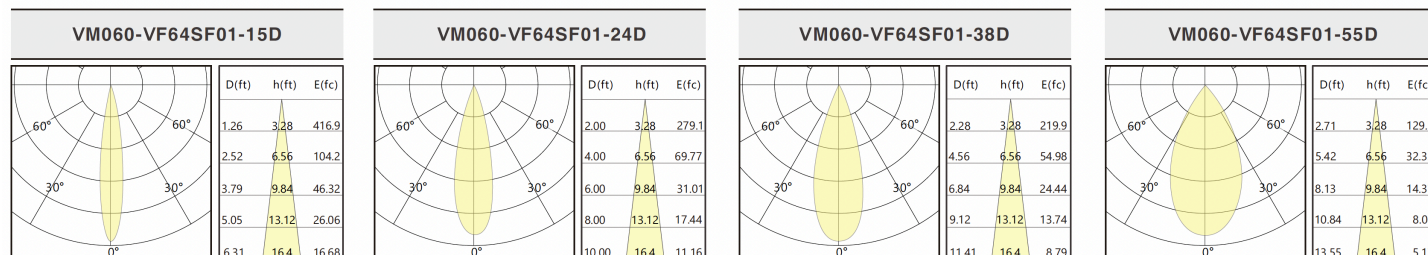
DATE:

PHOTOMETRIC DATA (NON-DIMMING)

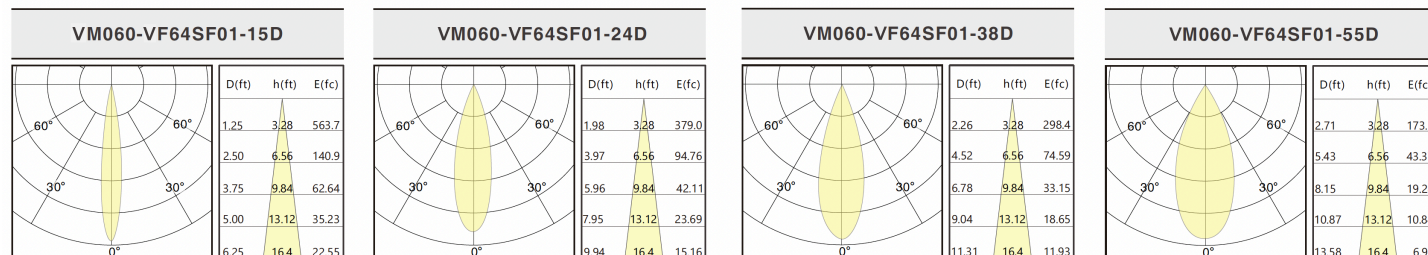
CCT (K)	CRI	LOAD (W)	BEAM OPTIC	LUMENS (lm)	EFFICACY (lm/w)	MAX CANDELA (cd)
3000K	90	10W	15°	894	89	4489
			24°	966	96	3002
			38°	962	96	2366
			55°	905	90	1395
		15W	15°	1184	86	6090
			24°	1284	93	4083
			38°	1274	93	3208
			55°	1206	87	1870

Above test data is based on **Square Fixed** trim with 3000K 90CRI LED.

VM060-VF64SF01 10W



VM060-VF64SF01 15W



Above test data is based on **Square Fixed** trim with 3000K 90CRI LED.

Theoretical Lumens: XXX LM (subject to change)

Theoretical Wattage: XXX W (subject to change)

***Please note lumens and wattage are subject to change and will be determined post production of the first articles.

*Any custom modifications are subject to minimum order quantity. (M.O.Q.)

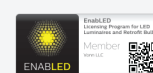
© VONN Lighting, 2025

VONN, LLC.

3323 NE 163rd St. PH-706
North Miami Beach, FL 33160

WWW.VONN.COM 888.604.8666

VONN, LLC. reserves the right to make any design changes for continuous improvement which will not affect the overall appearance or performance.



VELLA 3" DEEP ANTI-GLARE DOWNLIGHT

VM060-VF64RF01

By VONN Lighting

VONN

PROJECT:

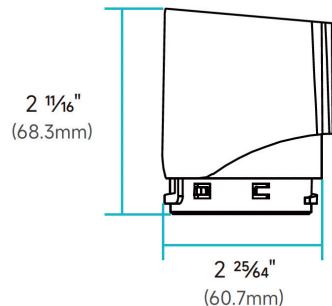
TYPE:

CATALOG#:

DATE:

DIMENSION

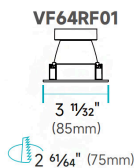
LED Module



Trim for Anti-Glare Series



Round



Square



Theoretical Lumens: XXX LM (subject to change)

Theoretical Wattage: XXX W (subject to change)

***Please note lumens and wattage are subject to change and will be determined post production of the first articles.

*Any custom modifications are subject to minimum order quantity. (M.O.Q.)

© VONN Lighting, 2025

VONN, LLC.

3323 NE 163rd St. PH-706
North Miami Beach, FL 33160

WWW.VONN.COM 888.604.8666

VONN, LLC. reserves the right to make any design changes for continuous improvement which will not affect the overall appearance or performance.



VELLA 3" DEEP ANTI-GLARE DOWNLIGHT

VM060-VF64RF01

By VONN Lighting

VONN

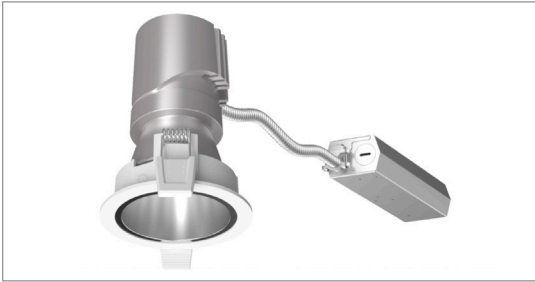
PROJECT:

TYPE:

CATALOG#:

DATE:

INSTALLATION

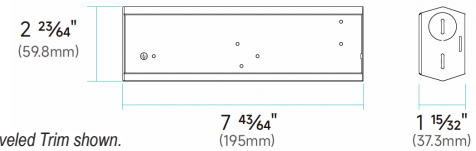


REMODEL

INSTALLATION

1. Direct connection with installed housing.
2. Operation temperature: -20°C - 40°C

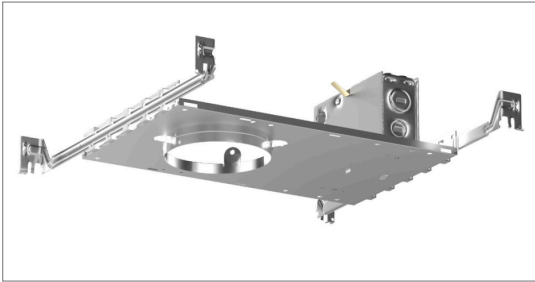
DIMENSIONS FOR REMODEL MOUNTED DRIVER



Note: Total height varies depending on trim, Beveled Trim shown.

Minimum height: 4 31/32" (126.2mm)

Maximum height: 4 31/32" (126.2mm)

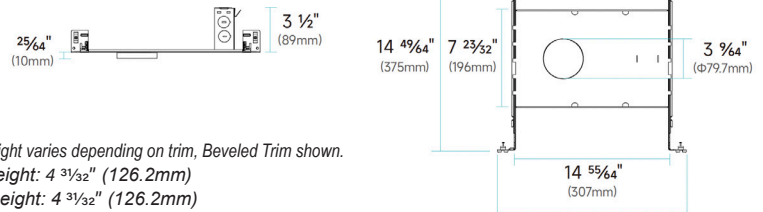


NEW CONSTRUCTION

INSTALLATION

1. Non-IC rated housings must be kept at a minimum of 3" away from insulation.
2. Fixture includes adjustable bar hangers (14"-25") for wood joist or t-bar ceiling installations.
3. Bar hangers can be installed in either direction.
4. Operation temperature: -20°C - 40°C.

DIMENSIONS



Note: Total height varies depending on trim, Beveled Trim shown.

Minimum height: 4 31/32" (126.2mm)

Maximum height: 4 31/32" (126.2mm)

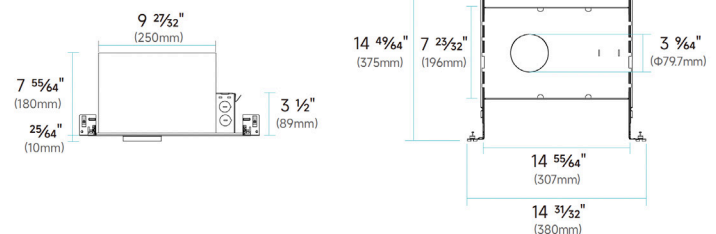


IC RATED HOUSING

INSTALLATION

1. ETL Listed for direct contact with insulation.
2. Fixture includes adjustable bar hangers (14"-25") for wood joist or t-bar ceiling installations.
3. Bar hangers can be installed in either direction.
4. Operation temperature: -20°C - 40°C.

DIMENSIONS



Theoretical Lumens: XXX LM (subject to change)

Theoretical Wattage: XXX W (subject to change)

***Please note lumens and wattage are subject to change and will be determined post production of the first articles.

*Any custom modifications are subject to minimum order quantity. (M.O.Q.)

© VONN Lighting, 2025