

VELLA 2" HOTEL DOWNLIGHT

VM050-VF51RA01

By VONN Lighting

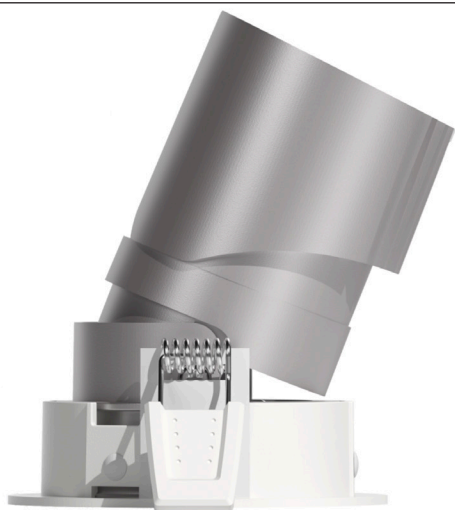
VONN

PROJECT:

TYPE:

CATALOG#:

DATE:



Round



Round Flangeless


DESCRIPTION

The VELLA 2" Hotel series is not only an aesthetically designed downlight but also delivers high-quality illumination, thanks to a combination of a precision light beam lens and a secondary reflector. These luminaires blend seamlessly into the ceiling layout, embodying the philosophy of "light instead of luminaires." With a super modular design available in both round and square shapes, as well as adjustable and fixed options in various wattages, the VELLA Hotel series is an excellent choice for creating a unified lighting experience in any environment.

FEATURES

- Elegant & compact in its style, versatile in its use.
- Precise light control, 15°, 24°, 38°, 55° beam lens options.
- Interchangeable different color secondary reflectors for anti-glare and decorative function.
- Super modular design, replacing LED module, trims, beam lens, honeycomb filter and secondary reflectors without any needs for tools.
- 355° rotation and 30° tilt.
- Anti-glare accessories provide maximum visual comfort.
- Service the LED optics and Driver from above the ceiling.

SPECIFICATION

	VM050	
WATTAGE	5 W	8 W
LUMEN OUTPUT	326 LM	519 LM
BEAM OPTICS	Narrow Spot: 15°, Spot: 24°, Flood: 38°, Wide Flood: 55°	
COLOR TEMP.	Static White: 2700K, 3000K, 3500K, 4000K Dim to Warm: 2000K - 3000K	
COLOR QUALITY	80+/90+, 3-step SDCM	
INPUT WATTAGE	5 W	8 W
INPUT VOLTAGE	120/277V input, 50/60Hz	
POWER FACTOR	Greater than 0.9	
DIMMING TYPE	Triac dimming & 0-10V dimming range: 1%-100%	
CEILING THICKNESS	 $\frac{3}{64}$ " - $\frac{25}{32}$ " (1mm-20mm) Spring clip	
INSTALLATION	Remodel	
LISTINGS	ETL Listed to US and Canadian standards for damp locations. (IC) ETL listed for direct contact w/insulation.	
WARRANTY	5 year limited warranty	
AMBIENT OPERATING TEMPERATURE	-20°C to 40°C	
SYSTEM RATING	5000h @80% (L80)	

Theoretical Lumens: XXX LM (subject to change)

Theoretical Wattage: XXX W (subject to change)

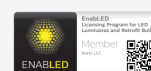
***Please note lumens and wattage are subject to change and will be determined post production of the first articles.

*Any custom modifications are subject to minimum order quantity. (M.O.Q.)

© VONN Lighting, 2025

VONN, LLC.
3323 NE 163rd St, PH-706
North Miami Beach, FL 33160
WWW.VONN.COM 888.604.8666

VONN, LLC. reserves the right to make any design changes for continuous improvement which will not affect the overall appearance or performance.



VELLA 2" HOTEL DOWNLIGHT

VM050-VF51RA01

By VONN Lighting

VONN

PROJECT:

TYPE:

CATALOG#:

DATE:

ORDERING INFORMATION

VM050	VF	5	1	-	-	-	-	-	-	-	-
Led Module	Trim	Dimensions of trim	Application	Trim Shape	Trim Style	Flangeless Trim	Safety Standard	Voltage	Lumen Output	Dimming Methods	Including Housing
VM050	VF	5 Nominal size: 50mm	1 Hotel	RA Round adjustable	01 Standard	F Flangeless Trim	A American standard	MV 120-277V	L03 300lm	V 0-10V	R Remodel
				RF Round fixed					L05 500lm	T Triac	
										X 0-10V/Triac	
										D Dali	

ACCESSORIES (TO BE ORDERED SEPARATELY)

FOR INSTALLATION CONSULT THE INSTRUCTION SHEET

OPTICAL ACCESSORY

☐ HONEYCOMB FILTER

VM050-H



☐ SOFT LENS

VM050-L



SECONDARY REFLECTOR COLOR

☐ BLACK

VF51RA-SB
VF51RF-SB



☐ BRIGHT SILVER

VF51RA-SS
VF51RF-SS



☐ MATT SILVER

VF51RA-SM
VF51RF-SM



☐ MATT WHITE

VF51RA-SW
VF51RF-SW



LUMEN MULTIPLIERS

CCT	MULTIPLIER	CRI	MULTIPLIER	STANDARD TRIM	MULTIPLIER
2700K	0.94	80+	1.19	VF51RA01 (Round adjustable)	1.00
3000K	1.00	90+	1.00	VF51RF01 (Round fixed)	0.99
3500K	1.00				
4000K	1.05				

Applying Lumen Multipliers to Calculate Delivered Lumens

Base Fixture Delivered Lumens (from PHOTOMETRIC DATA)	X	CCT Multiplier	X	CRI Multiplier	X	TRIM Multiplier	=	Delivered Lumens for Desired Fixture
STANDARD TRIM Example: VM050-VF51RF01 4000K 80+								
326 lm	X	1.05	X	1.19	X	0.99	=	403 lm

Theoretical Lumens: XXX LM (subject to change)

Theoretical Wattage: XXX W (subject to change)

***Please note lumens and wattage are subject to change and will be determined post production of the first articles.

*Any custom modifications are subject to minimum order quantity. (M.O.Q.)

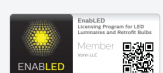
© VONN Lighting, 2025

VONN, LLC.

3323 NE 163rd St. PH-706
North Miami Beach, FL 33160

WWW.VONN.COM 888.604.8666

VONN, LLC. reserves the right to make any design changes for continuous improvement which will not affect the overall appearance or performance.



VELLA 2" HOTEL DOWNLIGHT

VM050-VF51RA01

By VONN Lighting

VONN

PROJECT:

TYPE:

CATALOG#:

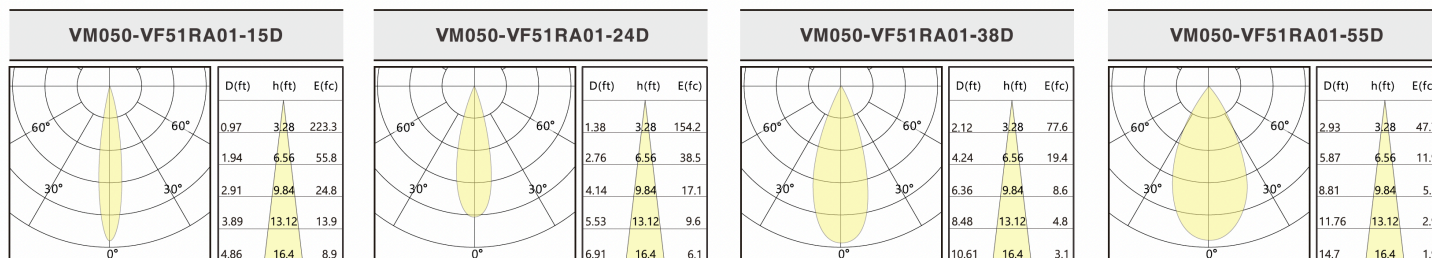
DATE:

PHOTOMETRIC DATA (NON-DIMMING)

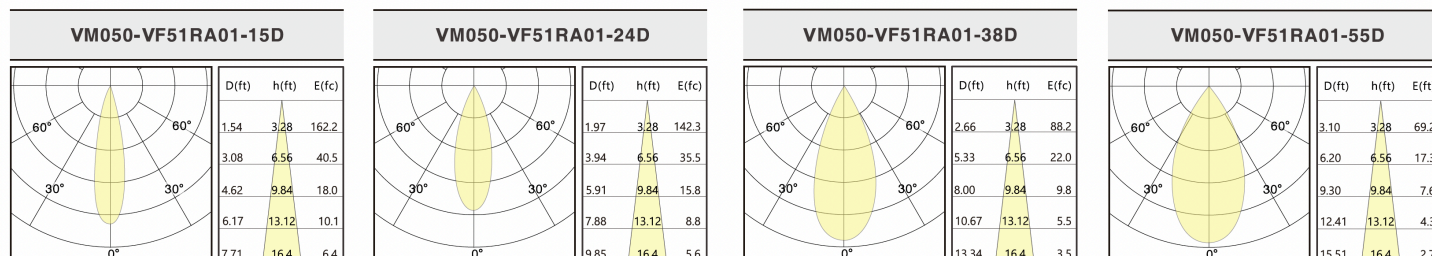
CCT (K)	CRI	LOAD (W)	BEAM OPTIC	LUMENS (lm)	EFFICACY (lm/w)	MAX CANDELA (cd)
3000K	90	5W	15°	301	58	2406
			24°	326	63	1669
			38°	334	65	836
			55°	325	63	521
		8W	15°	442	54	1748
			24°	516	63	1533
			38°	519	63	950
			55°	493	60	745

Above test data is based on **Round Adjustable** trim with 3000K 90CRI LED.

VM050-VF51RA01 5W



VM050-VF51RA01 8W



Above test data is based on **Round Adjustable** trim with 3000K 90CRI LED.

Theoretical Lumens: XXX LM (subject to change)

Theoretical Wattage: XXX W (subject to change)

***Please note lumens and wattage are subject to change and will be determined post production of the first articles.

*Any custom modifications are subject to minimum order quantity. (M.O.Q.)

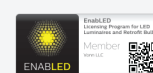
© VONN Lighting, 2025

VONN, LLC.

3323 NE 163rd St. PH-706
North Miami Beach, FL 33160

WWW.VONN.COM 888.604.8666

VONN, LLC. reserves the right to make any design changes for continuous improvement which will not affect the overall appearance or performance.



VELLA 2" HOTEL DOWNLIGHT

By VONN Lighting

VONN

PROJECT:

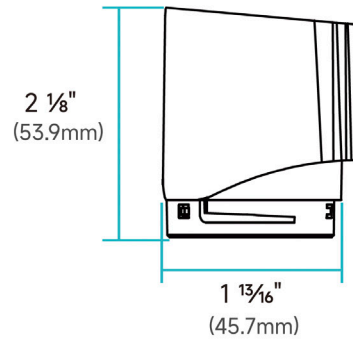
TYPE:

CATALOG#:

DATE:

DIMENSION

LED Module



Trim For Hotel Series



INSTALLATION

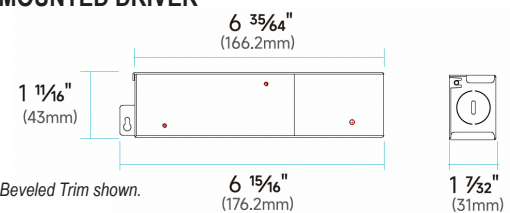


REMODEL

INSTALLATION

1. Direct connection with installed housing.
2. Operation temperature: -20°C - 40°C

DIMENSIONS FOR REMODEL MOUNTED DRIVER



Note: Total height varies depending on trim, Beveled Trim shown.
Minimum height: 3 9/32" (83.4mm)
Maximum height: 3 27/64" (86.8mm)

Theoretical Lumens: XXX LM (subject to change)

Theoretical Wattage: XXX W (subject to change)

***Please note lumens and wattage are subject to change and will be determined post production of the first articles.

*Any custom modifications are subject to minimum order quantity. (M.O.Q.)

© VONN Lighting, 2025