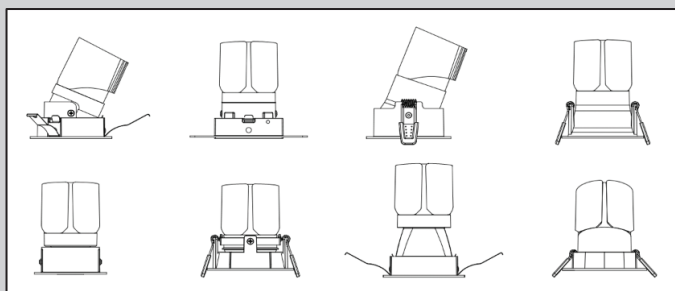
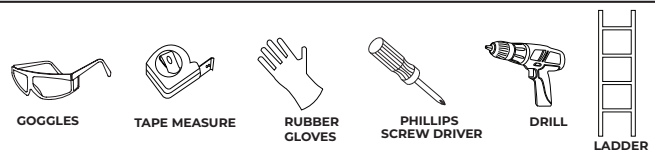


INSTALLATION GUIDE: VELLA SERIES

COMMERCIAL LED DOWN LIGHT SYSTEM

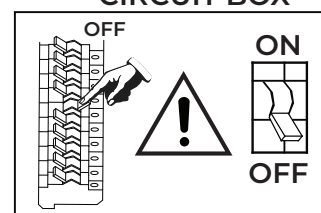


TOOLS YOU MAY NEED



- HOTEL SERIES
- RESIDENTIAL SERIES
- COMMERCIAL SERIES
- DEEP ANTI-GLARE SERIES
- WALL WASHER SERIES

CIRCUIT BOX



LED INFO & WARNINGS ⚠

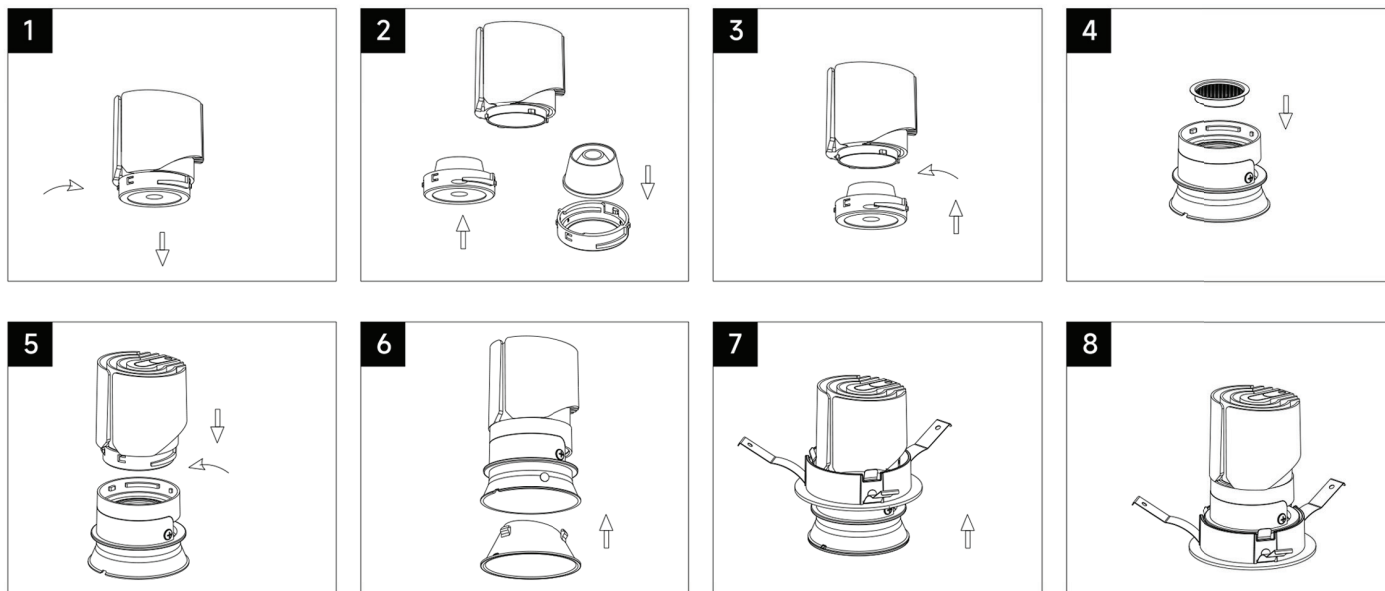
Please read and understand the entire manual before attempting to assemble, operate, or install the product.	Make sure that you have all necessary parts by checking the parts list. If any part is missing or damaged please contact VONN LIGHTING CUSTOMER SERVICE at 888-604-8666 for a replacement.
All parts must be used as indicated in these instructions. Do not substitute any parts, leave parts out, or use any parts that are worn or broken.	Inspect the LED fixture prior to installation to make sure that it has not been damaged during shipping.
Please handle the LED light with care when unpacking. Do not apply pressure to the LED's, do not open any factory sealed compartments, and do not touch the LEDs with your hands.	VONN highly recommends to use a qualified, licensed electrician to install the fixture. ⚠
VONN recommends to install the fixture on its own independent circuit. Do not install the fixture on the same circuit with the other appliances, or HVAC systems.	Do not remove or replace VONN manufactured parts that is provided with the fixture.
Place the wall switch in the "OFF" position of the room you are installing the fixture.	Shut "OFF" the electricity at main fuse box.

Instructions

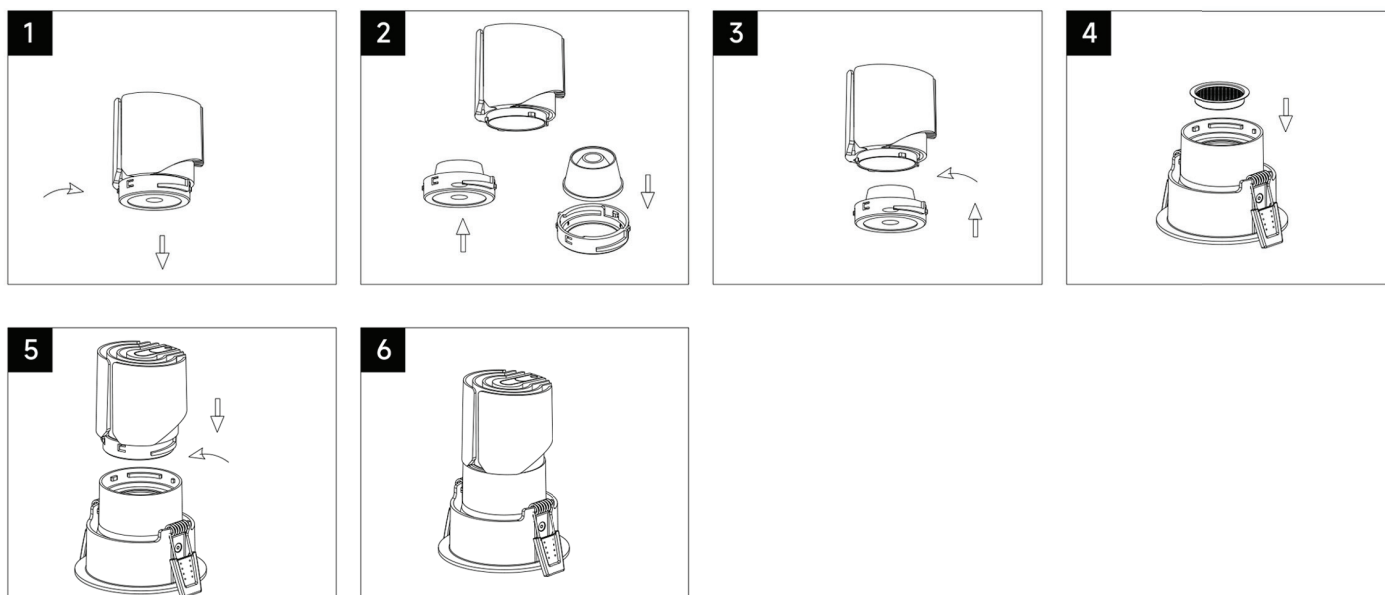
VONN

For Vella Series

Assembling Instruction (Hotel Series)



Assembling Instruction (Residential /Commercial /Deep Anti-glare /Wall Washer Series)

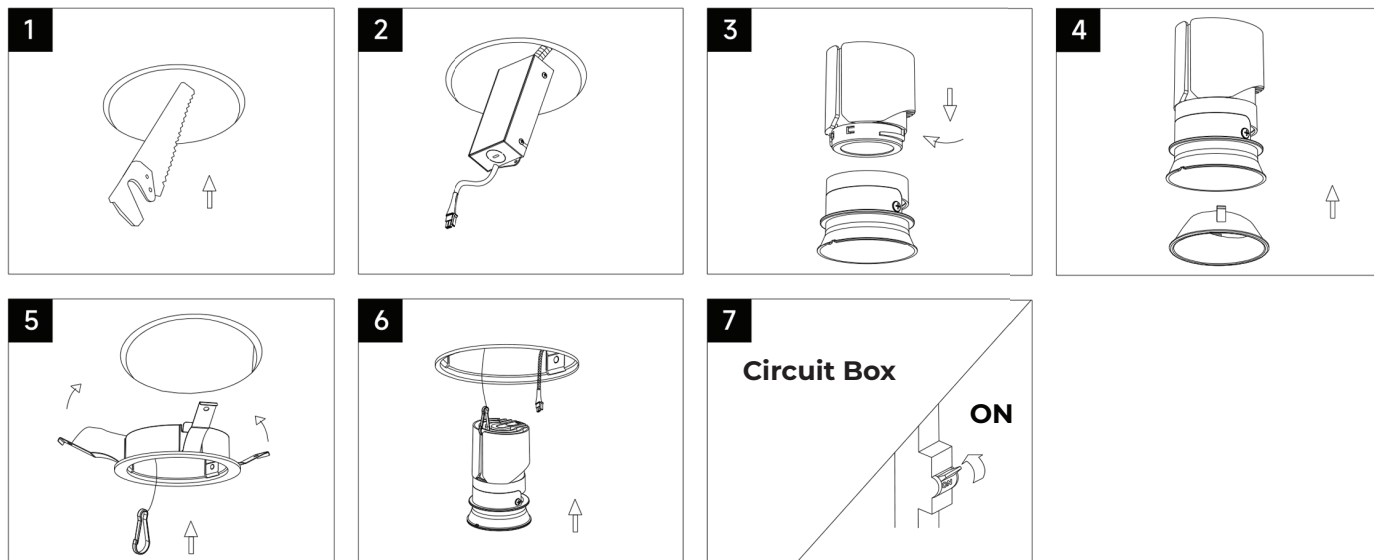


Instructions

VONN

For Vella Series

Installation Method 1



Installation Method 2

