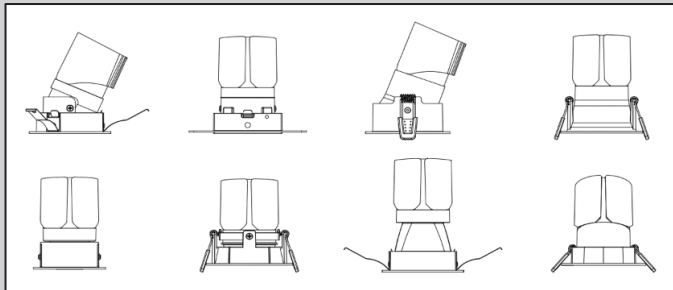


# INSTALLATION GUIDE: VELLA SERIES

## COMMERCIAL LED DOWN LIGHT SYSTEM

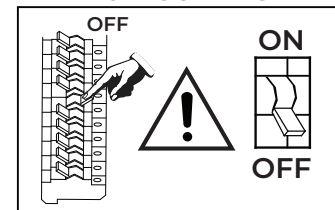


### TOOLS YOU MAY NEED



- HOTEL SERIES
- RESIDENTIAL SERIES
- COMMERCIAL SERIES
- DEEP ANTI-GLARE SERIES
- WALL WASHER SERIES

### CIRCUIT BOX



### LED INFO & WARNINGS ⚠

Please read and understand the entire manual before attempting to assemble, operate, or install the product.

Make sure that you have all necessary parts by checking the parts list. If any part is missing or damaged please contact VONN LIGHTING CUSTOMER SERVICE at 888-604-8666 for a replacement.

All parts must be used as indicated in these instructions. Do not substitute any parts, leave parts out, or use any parts that are worn or broken.

Inspect the LED fixture prior to installation to make sure that it has not been damaged during shipping.

Please handle the LED light with care when unpacking. Do not apply pressure to the LED's, do not open any factory sealed compartments, and do not touch the LEDs with your hands.

VONN highly recommends to use a qualified, licensed electrician to install the fixture. ⚠

VONN recommends to install the fixture on its own independent circuit. Do not install the fixture on the same circuit with the other appliances, or HVAC systems.

Do not remove or replace VONN manufactured parts that is provided with the fixture.

Place the wall switch in the "OFF" position of the room you are installing the fixture.

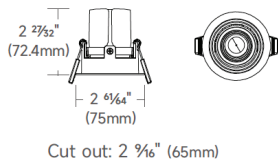
Shut "OFF" the electricity at main fuse box.

# Instructions

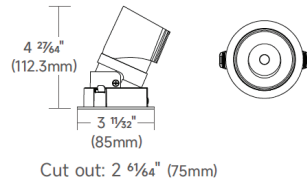
VONN

For Vella Series

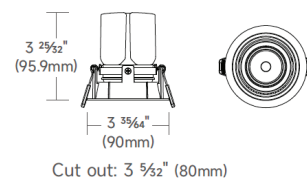
VM050-VF53RA01



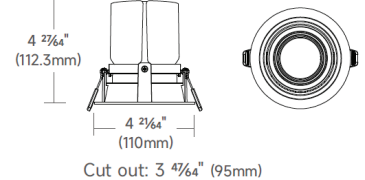
VM060-VF61RA01



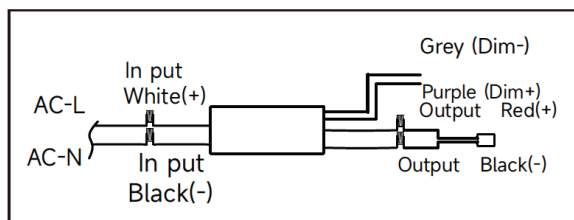
VM060-VF63RA01



VM070-VF73RA01



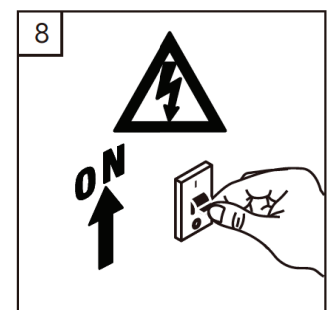
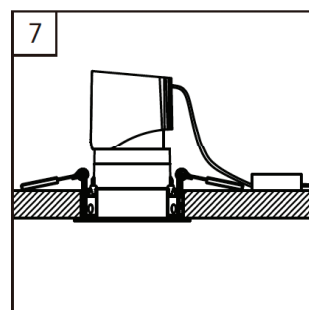
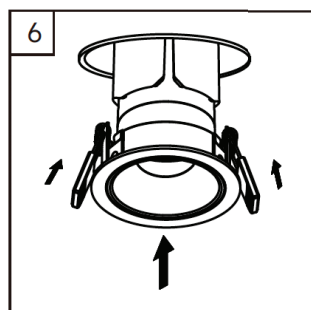
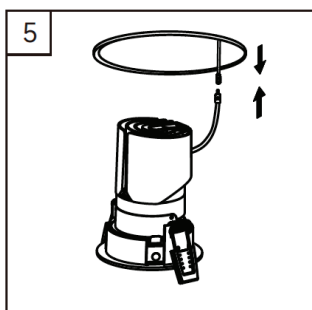
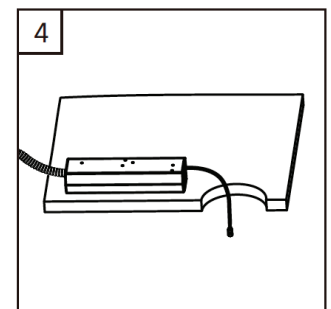
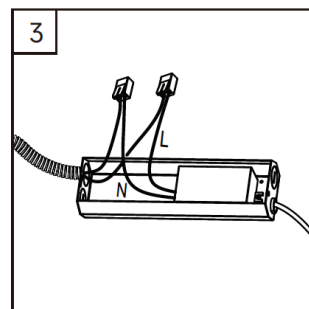
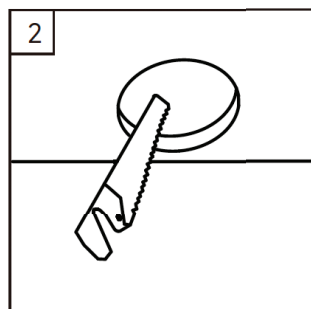
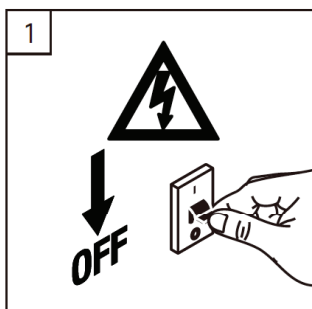
## WIRE CONNECTION



### WARNING

- ✓ Installation space height: 180mm and Match ceiling thickness: spring clip 1-20mm, spring plate 8-20mm, spring strip 5-20mm.
- ✓ Install this kit only in luminaires that have the construction features and dimensions shown in the photographs and/or drawings and where the input rating of the retrofit kit does not exceed the input rating of the luminaire.
- ✓ Wire connection must meet local electrical/building codes. Confirm that wires are in good condition and connectors are tight. A qualified electrician is required to install/remove the luminaire.
- ✓ Do not make or alter any open holes in an enclosure of wiring or electrical components during kit installation.
- ✓ To prevent wiring damage or abrasion, do not expose wiring to edges of sheet metal or other sharp objects.
- ✓ Allow lamp/fixture to cool before handling. Do not touch enclosure or light source.
- ✓ Do not directly look at the lamp when it working.
- ✓ Do not exceed maximum wattage marked on luminaire label.
- ✓ Do not modify the mechanical or electrical of the luminaire.
- ✓ Do not use or store in corrosive environment with hazardous material e.g. Sulphur, Chlorine, Phthalates, etc.
- ✓ Using the original accessories. Or will voids warranty.
- ✓ Follow all manufacturer's warnings, recommendations and restrictions for: driver type, burning position, mounting locations/methods, replacement and recycling. Follow local disposal laws.

## INSTALLATION INSTRUCTIONS

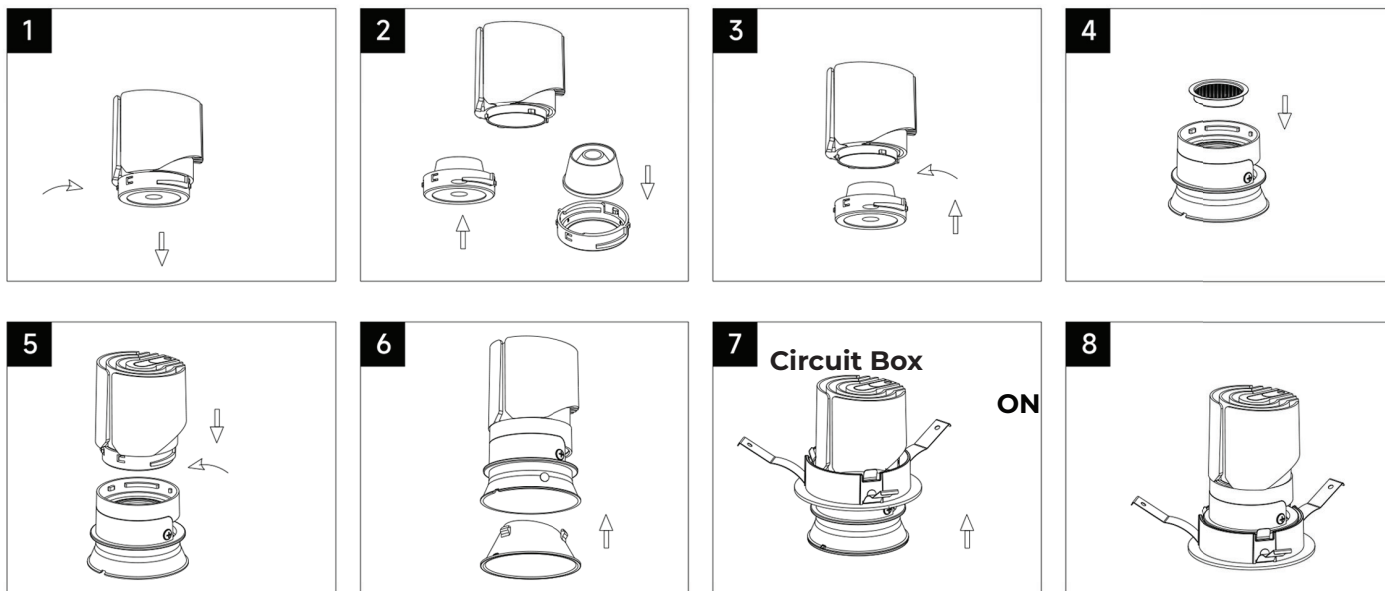


# Instructions

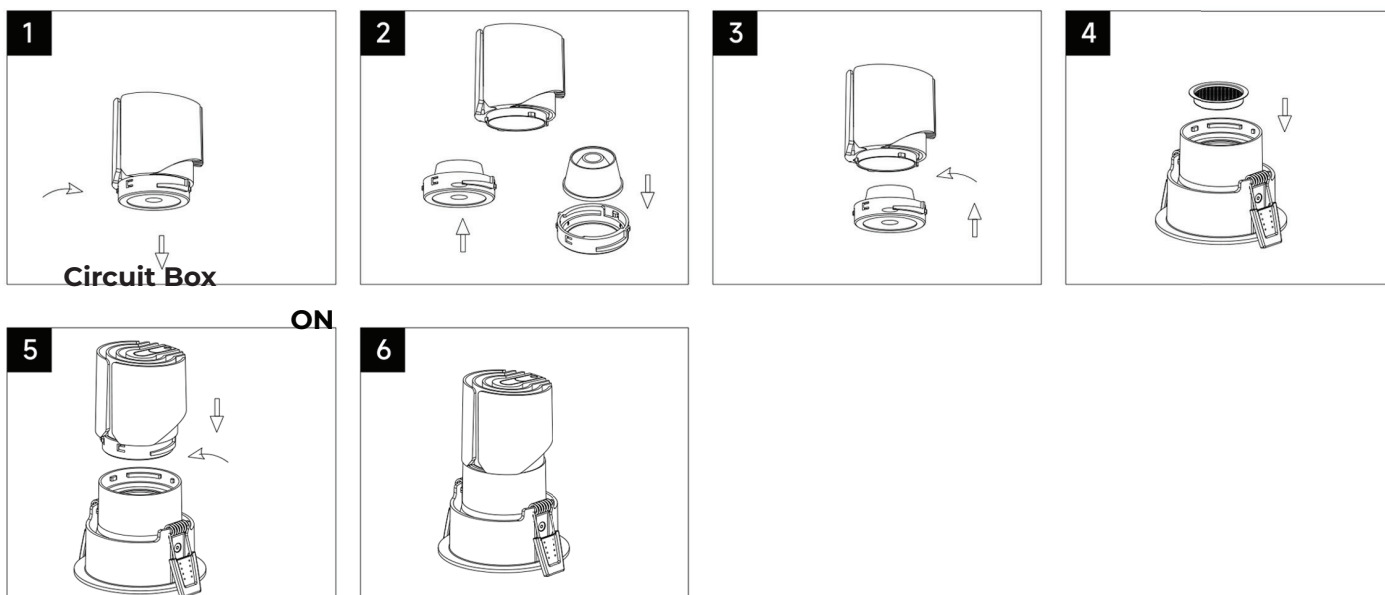
VONN

For Vella Series

## Assembling Instruction (Hotel Series)



## Assembling Instruction (Residential /Commercial /Deep Anti-glare /Wall Washer Series)

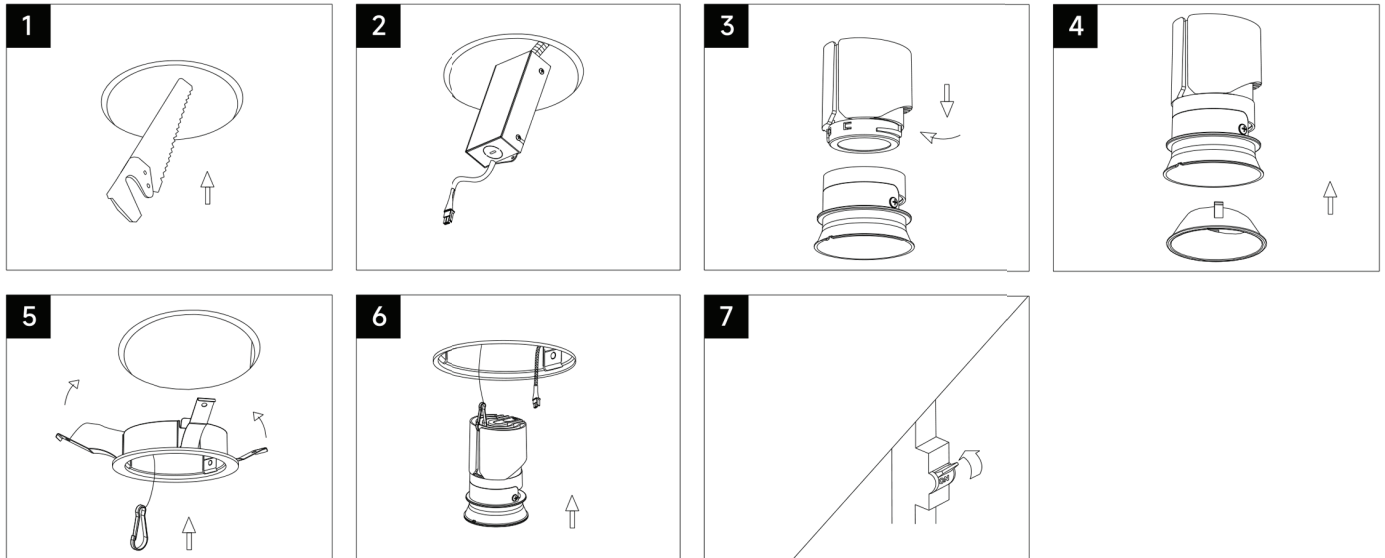


# Instructions

VONN

For Vella Series

## Installation Method 1



## Installation Method 2

