

INSTALLATION GUIDE:

LED STRIP

Garage Lighting

VGLX0202XCCTUNVWH / VGLX0324XCCTUNVWH

VGLX0506XCCTUNVWH / VGLX0638XCCTUNVWH



TOOLS YOU MAY NEED



GOGGLES



TAPE MEASURE



RUBBER
GLOVES



PHILLIPS
SCREW DRIVER



DRILL

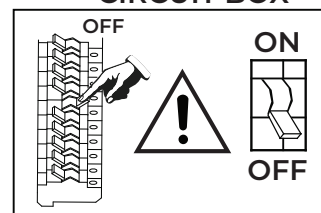


LADDER



FOR YOUR SAFETY, READ AND UNDERSTAND FOLLOW INSTRUCTIONS!
KEEP THE INSTRUCTIONS IN SAFE PLACE FOR FUTURE REFERENCE!

CIRCUIT BOX



LED INFO & WARNINGS !

Please read and understand the entire manual before attempting to assemble, operate, or install the product.	Make sure that you have all necessary parts by checking the parts list. If any part is missing or damaged please contact VONN LIGHTING CUSTOMER SERVICE at 888-604-8666 for a replacement.
All parts must be used as indicated in these instructions. Do not substitute any parts, leave parts out, or use any parts that are worn or broken.	Inspect the LED fixture prior to installation to make sure that it has not been damaged during shipping.
Please handle the LED light with care when unpacking. Do not apply pressure to the LED's, do not open any factory sealed compartments, and do not touch the LEDs with your hands.	VONN highly recommends to use a qualified, licensed electrician to install the fixture. !
VONN recommends to install the fixture on its own independent circuit. Do not install the fixture on the same circuit with the other appliances, or HVAC systems.	Do not remove or replace VONN manufactured parts that is provided with the fixture.
Place the wall switch in the "OFF" position of the room you are installing the fixture.	Shut "OFF" the electricity at main fuse box.

Instructions



Read Instruction manual carefully to ensure proper installation.
Please keep this instruction manual for future using!

⚠ WARNING

Lorem ipsum

To avoid the risk of fire, or electric shock this product should be installed, inspected, and maintained by a qualified electrician only. Installation should be completely by an individual familiar with the construction and operation of the luminaire. Installation of luminaire must be in accordance with nation and local building and electrical codes.

Safety Warning:

To avoid electric shock:

Be certain electrical power is OFF before and during installation and maintenance.

Luminaire must be supplied by a wiring system with an equipment grounding conductor.

To avoid burning hands:

Make sure lens and housing are cool when performing maintenance.

To avoid product degradation:

Make sure the wire supply voltage is the same as the luminaire supply

Use proper supply wiring as specified on the luminaire nameplate.

Avoid use in environments containing sulfur, chlorine, or other halides, methyl acetate or ethyl acetate, cyanoacrylates, glycol ethers, formaldehyde or butadiene.

Notes:

Instructions do not cover all details and all possible product configurations.

Do not restrict luminaire ventilation.

Ensure LED luminaire is not covered with material that will prevent convection or conduction cooling.

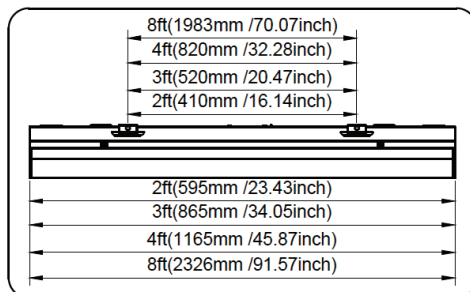
Ensure LED luminaire has the correct polarity before installation

Avoid exposing wiring to metal edges and sharp objects.

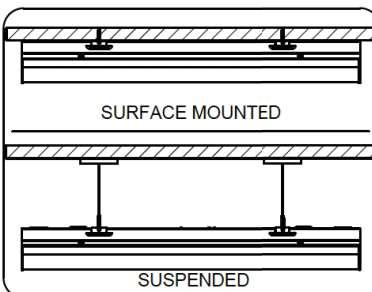
Maintenance:

Perform visual, electrical, and mechanical inspections on a regular basis. The environment and frequency of use should determine this. However, it is recommended that checks be made at least once a year. Electrically check to make sure that all connections are clean and tight. Mechanically check that all parts are properly assembled.

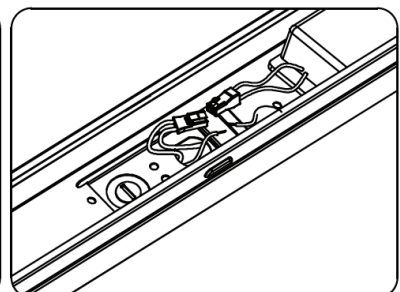
■ Installation Dimension



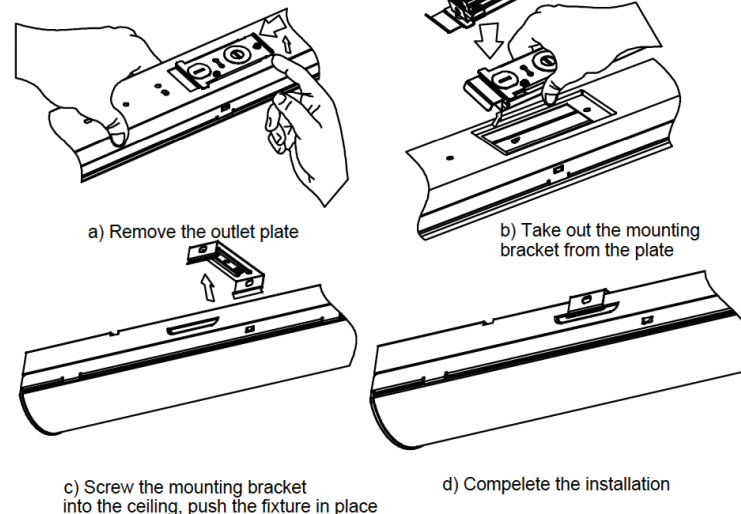
■ Installation



■ Electrical Connection



■ Instructions



■ Wiring Diagram

