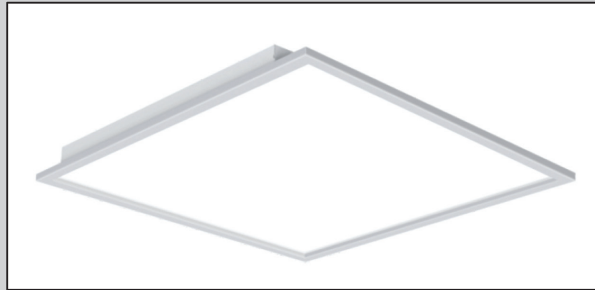


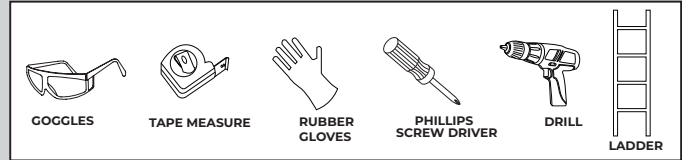
INSTALLATION GUIDE:

Flat Panel (Back-Lit LED)

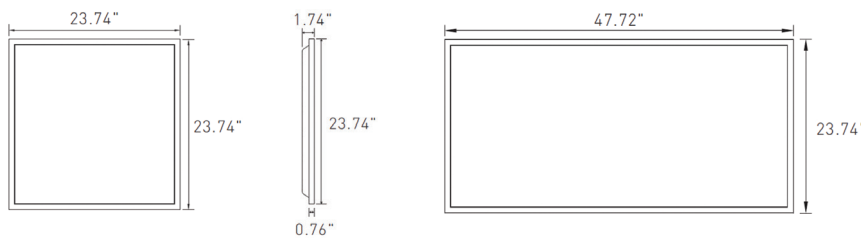
CCT & Wattage Adjustable + Emergency Back Up
VFPR22CCTEM / VFPR24CCTEM



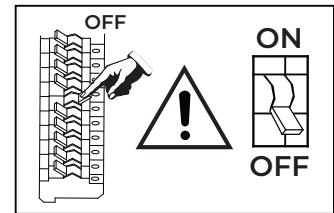
TOOLS YOU MAY NEED



! FOR YOUR SAFETY, READ AND UNDERSTAND FOLLOW INSTRUCTIONS!
 KEEP THE INSTRUCTIONS IN SAFE PLACE FOR FUTURE REFERENCE!

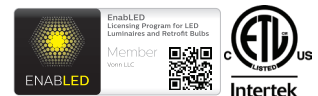


CIRCUIT BOX



LED INFO & WARNINGS !

<p>Please read and understand the entire manual before attempting to assemble, operate, or install the product.</p>	<p>Make sure that you have all necessary parts by checking the parts list. If any part is missing or damaged please contact VONN LIGHTING CUSTOMER SERVICE at 888-604-8666 for a replacement.</p>
<p>All parts must be used as indicated in these instructions. Do not substitute any parts, leave parts out, or use any parts that are worn or broken.</p>	<p>Inspect the LED fixture prior to installation to make sure that it has not been damaged during shipping.</p>
<p>Please handle the LED light with care when unpacking. Do not apply pressure to the LED's, do not open any factory sealed compartments, and do not touch the LEDs with your hands.</p>	<p>VONN highly recommends to use a qualified, licensed electrician to install the fixture. !</p>
<p>VONN recommends to install the fixture on its own independent circuit. Do not install the fixture on the same circuit with the other appliances, or HVAC systems.</p>	<p>Do not remove or replace VONN manufactured parts that is provided with the fixture.</p>
<p>Place the wall switch in the "OFF" position of the room you are installing the fixture.</p>	<p>Shut "OFF" the electricity at main fuse box.</p>



Instructions



NOTE

Please read this entire manual to fully understand and safely use this product.

Specifications are subject to change without notice.

Please visit our website the most recent user guide versions.

UNPACKING

- 1 Unpack and carefully examine the product.
- 2 Report any damage and save all packing materials if any part(s) were damaged during shipping.
- 3 Do not attempt to use this apparatus if it is damaged.

IMPORTANT SAFETY INFORMATION



CAUTION: Risk of Electric Shock

Suitable for Damp location. Access above ceiling required. Suitable for suspended ceilings.

READ ALL INSTRUCTIONS BEFORE INSTALLATION

- 1 Consult a qualified electrician to ensure correct branch circuit conductor.
- 2 The product should be installed and operated by a qualified electrician or technician in accordance with relevant local codes.
- 3 Risk of electric shock. Ensure that main power source is off when wiring or soldering the sections of the product.
- 4 Before installing this fixture or doing any maintenance, make sure to turn off the power supply at the circuit breaker or fuse box.
- 5 Check to make sure that all fixture connections have been properly made and the fixture is grounded to avoid potential electrical shocks.
- 6 Designed for use in AC110-277V/110-347V,50/60Hz,protected cricuit.

Instructions



INSTALLATION INSTRUCTIONS

Step 1

Bend J-Hook by 45° making it vertical to the rear cover of LED luminaire (Figure 1A).
Bend the top part of J-Hook by 90° (Figure 1B).
Repeat STEP1 to other J-Hooks.

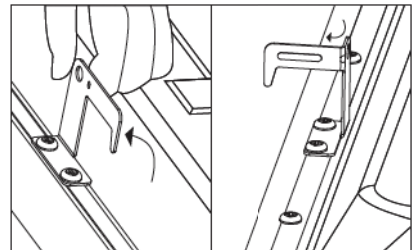


Figure 1 A

Figure 1 B

Step 2

Turn off power, remove the ceiling panel, then place LED luminaire into the T-bar, ensure the LED luminaire is attached to the ceiling. (Figure 2)
(J-Hook for positioning only)

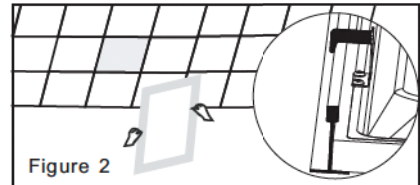


Figure 2

Step 3

Open the driver box. (Figure3)
(trade size of conduit: 22.2mm dia)

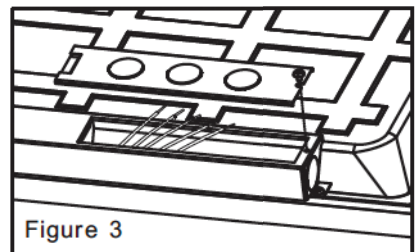


Figure 3

Step 4

① Connect AC Wires
Input L connects to the black wire of the luminaire,
N connects to the white wire, the ground connects
to the green wire

② Connect Dimmer
Compatible with 0-10V dimmer
The driver VIOLET (D+) to the dimmer+, and the
driver PINK(D-)to the dimmer-

Connect the wires with terminal cap as shown
in wiring diagram. (Figure 4)
Incoming insulated dimming conductors
shall have voltage rated at least equal to
the branch voltage.

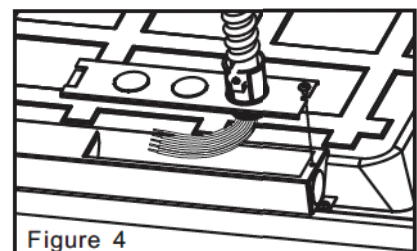


Figure 4

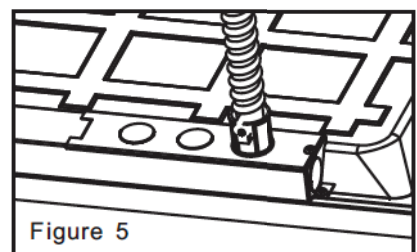


Figure 5

Step 5

Close the driver box and screw in (Figure 5)

WIRING DIAGRAM

