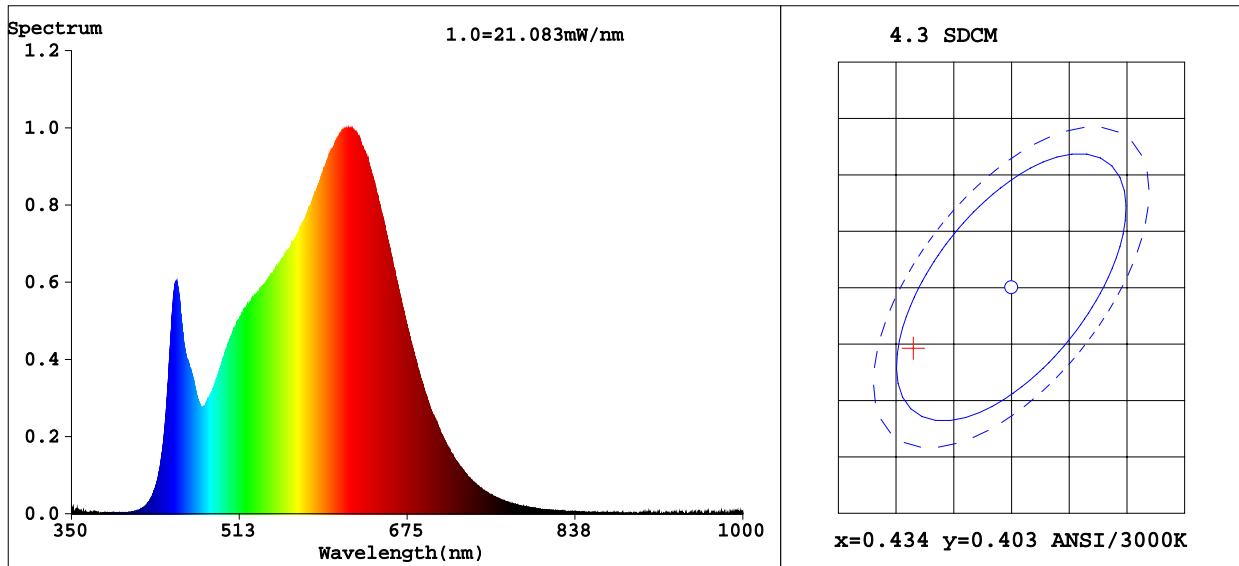


Spectrum Test Report



Color Parameters:

Chromaticity Coordinate: $x=0.4253$ $y=0.3976$ / $u'=0.2458$ $v'=0.5171$
 CCT=3152K(Duv=-0.0009) Dominant WL:Ld =582.5nm WL:Lc = --nm Purity=47.0%
 Ratio:R=23.7% G=73.0% B=3.4% Peak WL:Lp=618.1nm FWHM=162.5nm
 Render Index:Ra=94.0 AvgR=91.6

R1 =95 R2 =98 R3 =98 R4 =94 R5 =95 R6 =97 R7 =92
 R8 =82 R9 =61 R10=95 R11=96 R12=83 R13=96 R14=100 R15=91

Photo Parameters:

Flux = 1066 lm Eff. : 61.73 lm/W Fe = 3.612 W

Electrical parameters:

V = 120.68 V I = 0.1445 A P = 17.26 W PF = 0.9902
 LEVEL:OUT WHITE:ANSI_3000K

Status: Integral T = 22 ms Ip = 55663 (85%)

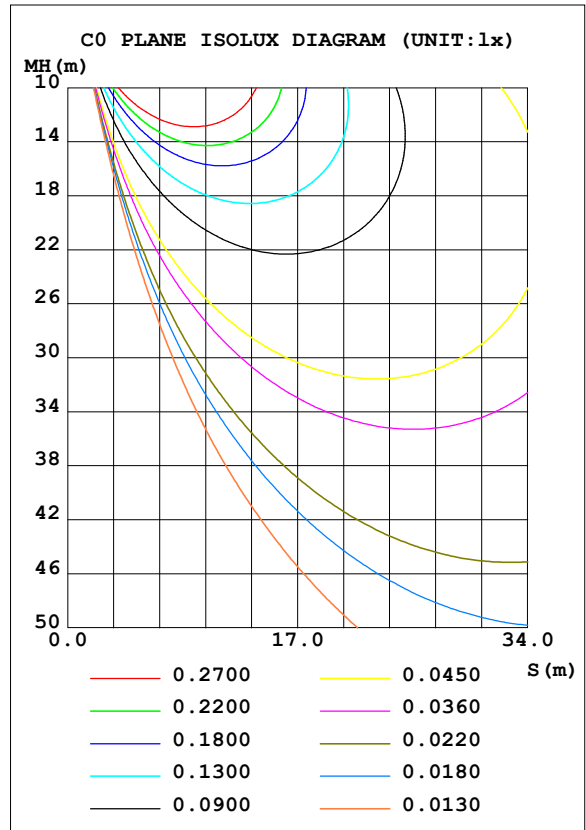
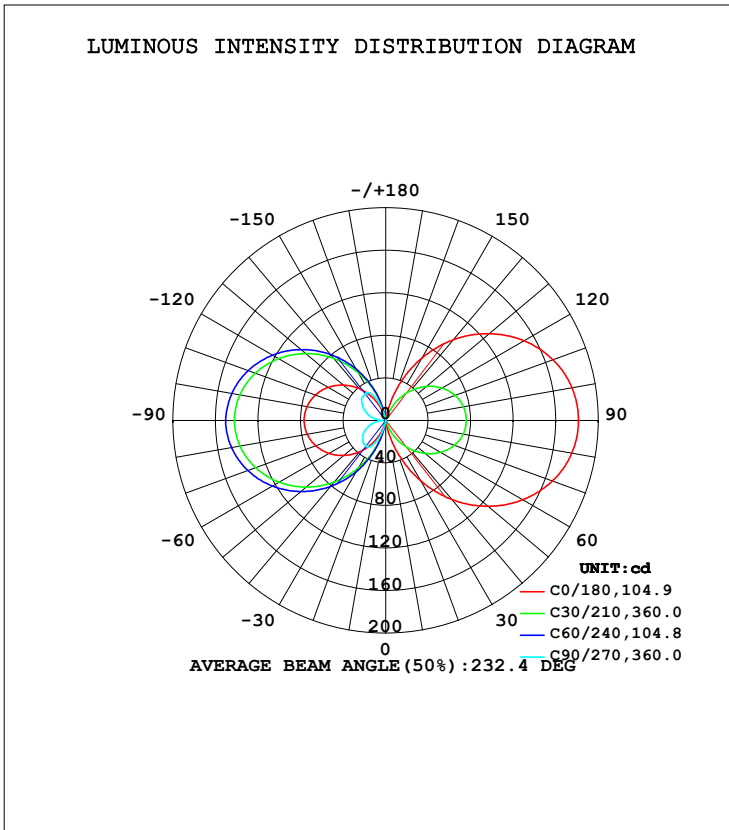
Model:VOB226088BL
 Tester:
 Temperature:25.3Deg
 Manufacturer:

Number:87
 Date:2021-09-24 15:27:23
 Humidity:65.0%
 Remarks:

LUMINAIRE PHOTOMETRIC TEST REPORT

Test:U:230.49V I:0.0759A P:16.830W PF:0.9624 Freq:49.99Hz Lamp Flux:8.33224x100 lm		
NAME: VOB226088BL	TYPE:wall lamp	WEIGHT:2KG
SPEC.:	DIM.:	SERIAL No.:001
MFR.:	SUR.:	Shielding Angle:

DATA OF LAMP		PHOTOMETRIC DATA			
MODEL	2835	Imax (cd)	229.6	S/MH (C0/180)	0.00
NOMINAL POWER (W)	17.68	LOR (%)	100.0	S/MH (C90/270)	0.00
RATED VOLTAGE (V)	230	TOTAL FLUX (lm)	833.22	η UP, DN (C0-180)	9.9, 9.8
NOMINAL FLUX (lm)	8.33224	CIE CLASS	DIFFUSE	η UP, DN (C180-360)	40.0, 40.3
LAMPS INSIDE	100	η up (%)	49.9	CIBSE SHR NOM	0.00
TEST VOLTAGE (V)	230	η down (%)	50.1	CIBSE SHR MAX	1.00



C Range: 0 - 360DEG
 C Interval: 15.0DEG
 Test Speed: MEDIUM
 Temperature: 25.3DEG
 Operators:
 Test Date: 22 September 2021

γ Range: 0 - 180DEG
 γ Interval: 0.5DEG
 Test System: EVERFINE GO-2000B_V1 SYSTEM V2.0.407.13
 Humidity: 65.0%
 Test Distance: 9.180m [K=1.0000]
 Remarks: VOB226088BL 100LED 2835 3000K 90Ra

ZONAL FLUX DIAGRAM

ZONAL FLUX DIAGRAM:

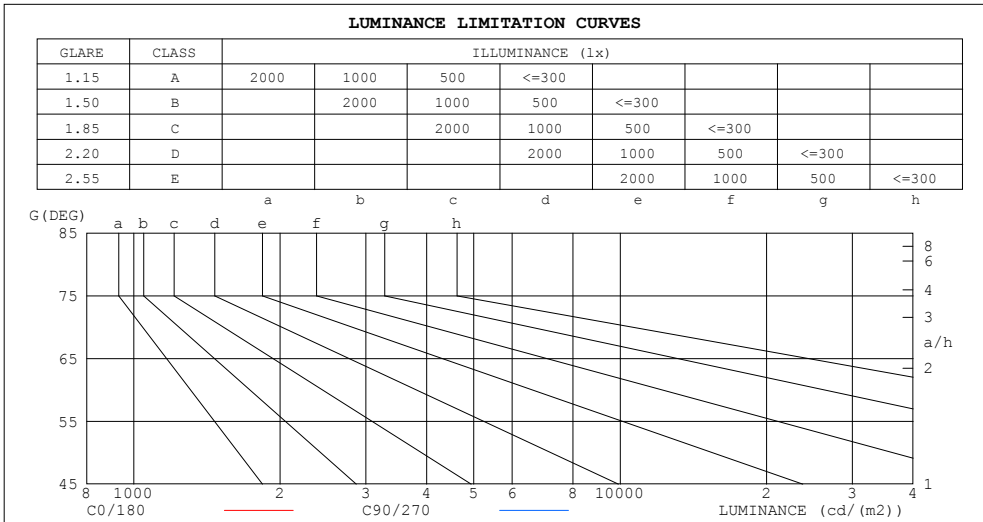
γ	C0	C45	C90	C135	C180	C225	C270	C315	γ	Φ zone	Φ total	%lum,lamp
10	0	0	0	0	0	3.713	0	1.474	0- 10	0.0074	0.0074	0.00,0.00
20	31.06	0	0	0	9.757	29.85	15.33	38.94	10- 20	2.395	2.402	0.29,0.29
30	64.98	0	0	0	24.50	57.24	28.26	80.79	20- 30	11.46	13.86	1.66,1.66
40	97.19	0.7236	0	0	38.60	83.69	30.31	120.1	30- 40	25.89	39.75	4.77,4.77
50	125.6	5.567	0	0	51.29	107.8	28.53	155.3	40- 50	43.85	83.60	10,10
60	149.1	9.727	0	0	62.00	128.3	24.24	185.0	50- 60	62.65	146.3	17.6,17.6
70	166.8	12.90	0	0	70.01	144.0	17.50	207.7	60- 70	79.57	225.8	27.1,27.1
80	177.7	14.93	0	0	74.99	154.2	10.37	221.8	70- 80	92.34	318.2	38.2,38.2
90	181.3	15.62	0	0	76.82	157.8	3.259	226.2	80- 90	98.94	417.1	50.1,50.1
100	177.9	15.29	0	0	75.21	154.2	10.21	221.5	90-100	98.50	515.6	61.9,61.9
110	167.3	13.63	0	0	70.37	144.0	18.30	207.0	100-110	91.76	607.4	72.9,72.9
120	150.2	10.83	0	0	62.49	128.2	24.53	173.7	110-120	79.15	686.5	82.4,82.4
130	127.1	6.886	0	0	51.95	107.9	29.70	143.6	120-130	62.46	749.0	89.9,89.9
140	99.19	2.146	0	0	39.30	83.82	31.49	121.0	130-140	43.94	792.9	95.2,95.2
150	67.34	0	0	0	25.21	57.25	29.86	82.55	140-150	26.14	819.1	98.3,98.3
160	33.52	0	0	0	10.32	29.70	16.53	40.55	150-160	11.67	830.7	99.7,99.7
170	0.5416	0	0	0	0	3.377	0	2.023	160-170	2.481	833.2	100,100
180	0	0	0	0	0	0	0	0	170-180	0.0076	833.2	100,100
DEG	LUMINOUS INTENSITY:cd									UNIT:lm		

C Range: 0 - 360DEG
 C Interval: 15.0DEG
 Test Speed: MEDIUM
 Temperature:25.3DEG
 Operators:
 Test Date:22 September 2021

γ Range: 0 - 180DEG
 γ Interval: 0.5DEG
 Test System:EVERFINE GO-2000B_V1 SYSTEM V2.0.407.13
 Humidity:65.0%
 Test Distance:9.180m [K=1.0000]
 Remarks: VOB226088BL 100LED 2835 3000K 90Ra

LUMINANCE LIMITATION CURVES

Test:U:230.49V I:0.0759A P:16.830W PF:0.9624 Freq:49.99Hz Lamp Flux:8.33224x100 lm		
NAME: VOB226088BL	TYPE:wall lamp	WEIGHT:2KG
SPEC.:	DIM.:	SERIAL No.:001
MFR.:	SUR.:	Shielding Angle:



LUMINANCE cd/(m2)		
G (DEG)	C0/180	C90/270
85	8198664	0
80	4053209	0
75	2649315	0
70	1931087	0
65	1487214	0
60	1180601	0
55	952725	0
50	773862	0
45	626944	0

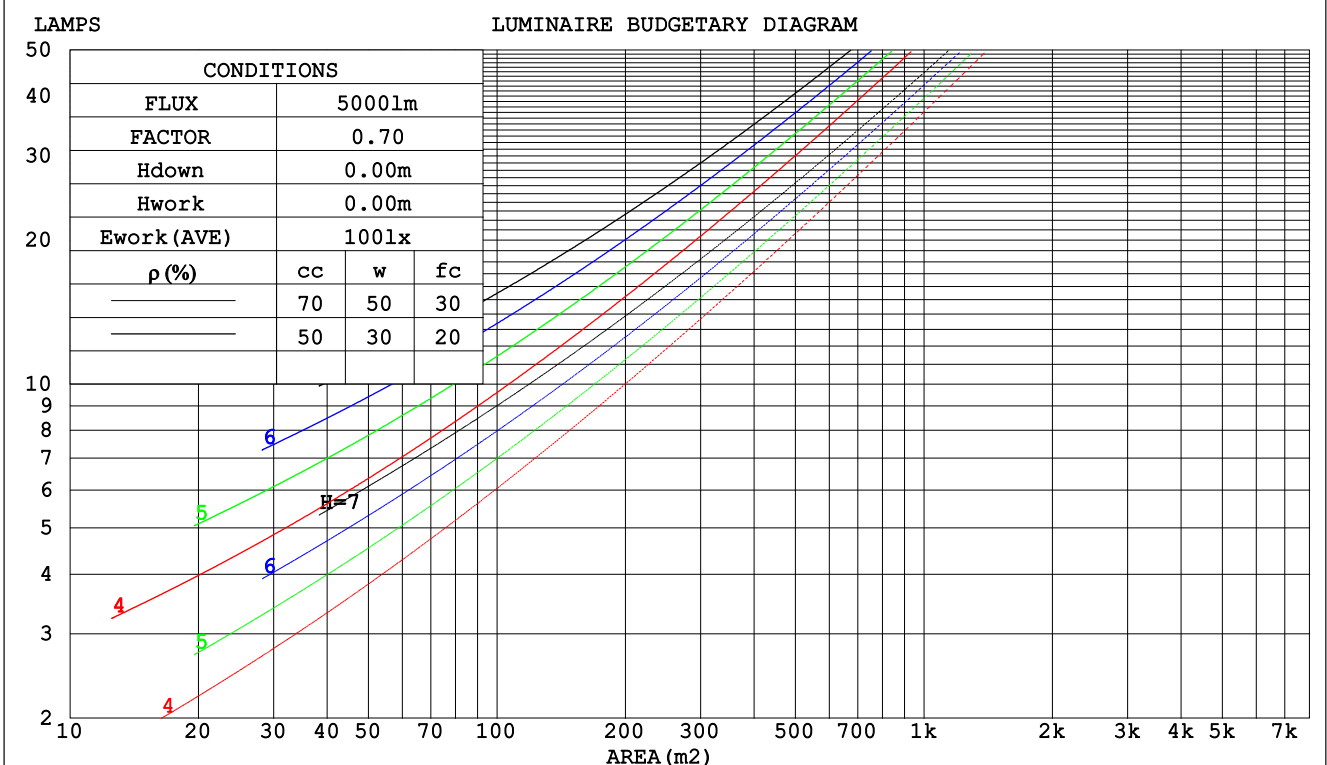
C Range: 0 - 360DEG
 C Interval: 15.0DEG
 Test Speed: MEDIUM
 Temperature:25.3DEG
 Operators:
 Test Date:22 September 2021

γ Range: 0 - 180DEG
 γ Interval: 0.5DEG
 Test System:EVERFINE GO-2000B_V1 SYSTEM V2.0.407.13
 Humidity:65.0%
 Test Distance:9.180m [K=1.0000]
 Remarks: VOB226088BL 100LED 2835 3000K 90Ra

CU AND LUMINAIRE BUDGETARY ESTIMATE DIAGRAM

Test:U:230.49V I:0.0759A P:16.830W PF:0.9624 Freq:49.99Hz Lamp Flux:8.33224x100 lm		
NAME: VOB226088BL	TYPE:wall lamp	WEIGHT:2KG
SPEC.:	DIM.:	SERIAL No.:001
MFR.:	SUR.:	Shielding Angle:

pcc	80%			70%			50%			30%			10%			0
pw	50%	30%	10%	50%	30%	10%	50%	30%	10%	50%	30%	10%	50%	30%	10%	0
pfc	20%			20%			20%			20%			20%			0
RCR	RCR:Room Cavity Ratio						Coefficients of Utilization(CU)									
0.0	1.07	1.07	1.07	.99	.99	.99	.83	.83	.83	.69	.69	.69	.56	.56	.56	.50
1.0	.85	.78	.73	.77	.72	.67	.64	.60	.56	.51	.48	.45	.40	.37	.35	.29
2.0	.70	.62	.55	.64	.57	.50	.52	.46	.41	.42	.37	.33	.32	.28	.25	.20
3.0	.60	.50	.43	.54	.46	.39	.44	.38	.32	.35	.30	.25	.26	.22	.19	.14
4.0	.52	.42	.34	.47	.38	.31	.38	.31	.25	.30	.24	.20	.22	.18	.14	.10
5.0	.45	.35	.28	.41	.32	.26	.33	.26	.21	.26	.20	.16	.19	.15	.11	.08
6.0	.40	.30	.24	.36	.28	.21	.29	.23	.17	.23	.18	.13	.17	.13	.09	.06
7.0	.36	.26	.20	.32	.24	.18	.26	.20	.15	.21	.15	.11	.15	.11	.08	.05
8.0	.32	.23	.17	.29	.21	.16	.24	.17	.13	.19	.13	.10	.14	.10	.07	.04
9.0	.29	.20	.15	.26	.19	.13	.21	.15	.11	.17	.12	.08	.13	.09	.06	.03
10.0	.26	.18	.13	.24	.17	.12	.20	.14	.09	.15	.11	.07	.12	.08	.05	.03



C Range: 0 - 360DEG
 C Interval: 15.0DEG
 Test Speed: MEDIUM
 Temperature:25.3DEG
 Operators:
 Test Date:22 September 2021

γ Range: 0 - 180DEG
 γ Interval: 0.5DEG
 Test System:EVERFINE GO-2000B_V1 SYSTEM V2.0.407.13
 Humidity:65.0%
 Test Distance:9.180m [K=1.0000]
 Remarks: VOB226088BL 100LED 2835 3000K 90Ra

WEC AND CCEC

Test:U:230.49V I:0.0759A P:16.830W PF:0.9624 Freq:49.99Hz Lamp Flux:8.33224x100 lm		
NAME: VOB226088BL	TYPE:wall lamp	WEIGHT:2KG
SPEC.:	DIM.:	SERIAL No.:001
MFR.:	SUR.:	Shielding Angle:

pcc	80%			70%			50%			30%			10%			0
pw	50%	30%	10%	50%	30%	10%	50%	30%	10%	50%	30%	10%	50%	30%	10%	0
pfc	20%			20%			20%			20%			20%			0
RCR	RCR:Room Cavity Ratio						Wall Exitance Coefficients(WEC)									
0.0																
1.0	.449	.255	.081	.426	.243	.077	.384	.220	.070	.345	.199	.064	.309	.179	.058	
2.0	.368	.201	.062	.347	.191	.059	.308	.171	.053	.273	.153	.048	.240	.136	.043	
3.0	.317	.169	.050	.298	.160	.048	.263	.142	.043	.230	.126	.039	.200	.111	.034	
4.0	.280	.145	.043	.262	.137	.041	.230	.122	.036	.200	.107	.032	.172	.093	.028	
5.0	.251	.128	.037	.235	.121	.035	.205	.107	.031	.177	.094	.028	.151	.081	.024	
6.0	.227	.114	.033	.213	.107	.031	.185	.095	.028	.160	.083	.024	.135	.071	.021	
7.0	.208	.103	.029	.194	.097	.028	.169	.085	.025	.145	.074	.022	.123	.064	.019	
8.0	.192	.094	.026	.179	.088	.025	.155	.078	.022	.133	.068	.019	.112	.058	.017	
9.0	.178	.086	.024	.166	.081	.023	.144	.071	.020	.123	.062	.018	.104	.053	.015	
10.0	.165	.079	.022	.155	.075	.021	.134	.066	.018	.115	.057	.016	.096	.048	.014	

pcc	80%			70%			50%			30%			10%			0
pw	50%	30%	10%	50%	30%	10%	50%	30%	10%	50%	30%	10%	50%	30%	10%	0
pfc	20%			20%			20%			20%			20%			0
RCR	RCR:Room Cavity Ratio						Ceiling Cavity Exitance Coefficients(CCEC)									
0.0	.571	.571	.571	.488	.488	.488	.333	.333	.333	.191	.191	.191	.061	.061	.061	
1.0	.574	.539	.507	.491	.462	.436	.336	.318	.302	.193	.184	.175	.062	.059	.057	
2.0	.569	.518	.475	.487	.446	.411	.334	.308	.286	.192	.179	.168	.062	.058	.055	
3.0	.562	.503	.456	.482	.434	.395	.331	.301	.277	.191	.176	.163	.061	.057	.054	
4.0	.554	.492	.444	.476	.425	.386	.327	.296	.271	.189	.173	.161	.061	.056	.053	
5.0	.547	.483	.436	.470	.418	.379	.323	.292	.268	.187	.171	.159	.060	.056	.052	
6.0	.539	.476	.430	.464	.412	.374	.320	.288	.265	.186	.170	.157	.060	.055	.052	
7.0	.532	.469	.425	.458	.407	.371	.316	.285	.263	.184	.168	.156	.059	.055	.052	
8.0	.526	.464	.422	.453	.403	.368	.313	.283	.261	.182	.167	.156	.059	.055	.052	
9.0	.519	.460	.420	.447	.399	.366	.310	.281	.260	.181	.166	.155	.058	.054	.051	
10.0	.513	.456	.418	.443	.396	.365	.307	.279	.259	.179	.165	.155	.058	.054	.051	

C Range: 0 - 360DEG
 C Interval: 15.0DEG
 Test Speed: MEDIUM
 Temperature:25.3DEG
 Operators:
 Test Date:22 September 2021

γ Range: 0 - 180DEG
 γ Interval: 0.5DEG
 Test System:EVERFINE GO-2000B_V1 SYSTEM V2.0.407.13
 Humidity:65.0%
 Test Distance:9.180m [K=1.0000]
 Remarks: VOB226088BL 100LED 2835 3000K 90Ra

UGR(Unified Glare Rating) Table

Test:U:230.49V I:0.0759A P:16.830W PF:0.9624 Freq:49.99Hz Lamp Flux:8.33224x100 lm										
NAME: VOB226088BL					TYPE:wall lamp			WEIGHT:2KG		
SPEC.:					DIM.:			SERIAL No.:001		
MFR.:					SUR.:			Shielding Angle:		
ceiling/cavity	0.7	0.7	0.5	0.5	0.3	0.7	0.7	0.5	0.5	0.3
walls	0.5	0.3	0.5	0.3	0.3	0.5	0.3	0.5	0.3	0.3
working plane	0.2	0.2	0.2	0.2	0.2	0.2	0.2	0.2	0.2	0.2
Room dimensions	Viewed crosswise					Viewed endwise				
x = 2H y = 2H	34.3	35.4	35.1	36.3	37.5	8.8	9.9	9.6	10.8	12.0
3H	38.9	39.9	39.7	40.8	42.0	8.4	9.5	9.3	10.4	11.6
4H	41.3	42.3	42.2	43.2	44.5	8.2	9.2	9.1	10.2	11.4
6H	43.9	44.9	44.9	45.8	47.1	8.1	9.0	9.0	9.9	11.2
8H	45.4	46.2	46.3	47.2	48.5	8.0	8.9	8.9	9.8	11.1
12H	46.9	47.8	47.9	48.8	50.0	7.9	8.7	8.8	9.7	10.9
4H 2H	33.9	34.9	34.8	35.8	37.1	22.6	23.6	23.5	24.6	25.8
3H	38.8	39.7	39.8	40.6	41.9	22.4	23.2	23.3	24.2	25.4
4H	41.6	42.3	42.5	43.3	44.6	22.2	23.0	23.1	23.9	25.2
6H	44.5	45.2	45.5	46.2	47.5	22.0	22.7	22.9	23.7	25.0
8H	46.2	46.8	47.1	47.8	49.1	21.9	22.6	22.9	23.6	24.9
12H	48.0	48.6	49.0	49.6	50.9	21.8	22.4	22.8	23.4	24.7
8H 4H	41.4	42.0	42.3	43.0	44.4	29.3	30.0	30.3	31.0	32.3
6H	44.6	45.2	45.6	46.2	47.5	29.2	29.7	30.2	30.8	32.1
8H	46.5	47.0	47.5	48.0	49.4	29.1	29.6	30.1	30.6	32.0
12H	48.6	49.1	49.7	50.1	51.5	29.0	29.4	30.0	30.5	31.8
12H 4H	41.3	41.9	42.3	42.9	44.2	32.1	32.7	33.1	33.8	35.1
6H	44.5	45.0	45.5	46.1	47.4	32.3	32.8	33.3	33.8	35.2
8H	46.5	46.9	47.5	47.9	49.3	32.3	32.7	33.3	33.7	35.1
Variations with the observer position at spacings:										
S = 1.0H	+ 0.1 / - 0.1					+ 0.2 / - 0.2				
1.5H	+ 0.3 / - 0.3					+ 0.4 / - 0.2				
2.0H	+ 0.5 / - 0.4					+ 0.9 / - 0.7				

CIE Pub.117, 833.2 lm Total Lamp Luminous Flux Correct (8log(F/F0) = -0.6)
 Area: 0.0002525 m2

C Range: 0 - 360DEG
 C Interval: 15.0DEG
 Test Speed: MEDIUM
 Temperature:25.3DEG
 Operators:
 Test Date:22 September 2021

γ Range: 0 - 180DEG
 γ Interval: 0.5DEG
 Test System:EVERFINE GO-2000B_V1 SYSTEM V2.0.407.13
 Humidity:65.0%
 Test Distance:9.180m [K=1.0000]
 Remarks: VOB226088BL 100LED 2835 3000K 90Ra

UTILIZATION FACTORS TABLE

Test:U:230.49V I:0.0759A P:16.830W PF:0.9624 Freq:49.99Hz Lamp Flux:8.33224x100 lm		
NAME: VOB226088BL	TYPE:wall lamp	WEIGHT:2KG
SPEC.:	DIM.:	SERIAL No.:001
MFR.:	SUR.:	Shielding Angle:

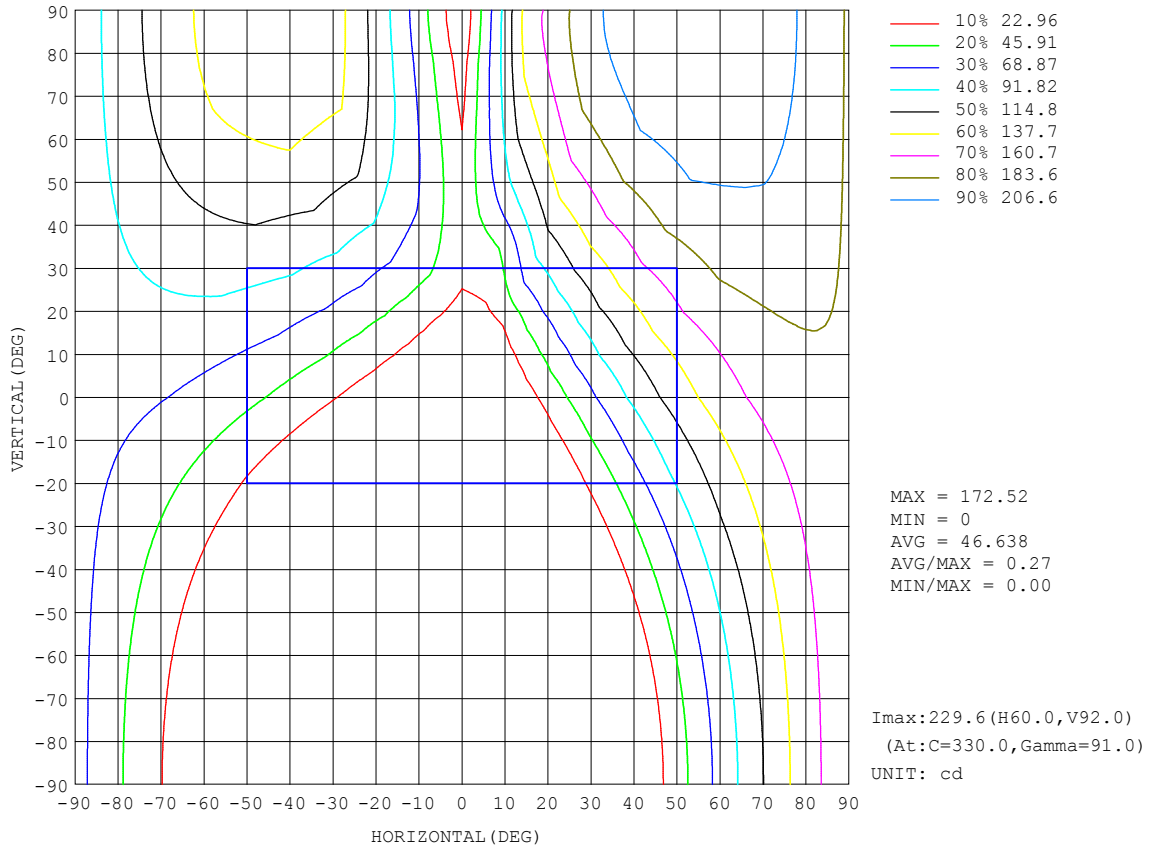
REFLECTANCE										
Ceiling	0.8	0.8	0.8	0.7	0.7	0.7	0.5	0.5	0.5	0
Walls	0.7	0.5	0.3	0.7	0.5	0.3	0.7	0.5	0.3	0
Working plane	0.2	0.2	0.2	0.2	0.2	0.2	0.2	0.2	0.2	0
ROOM INDEX	UTILIZATION FACTORS (PERCENT) $k(RI) \times RCR = 5$									
k = 0.60	33	20	12	31	19	11	28	17	10	3
0.80	41	27	18	38	25	17	34	22	15	5
1.00	48	33	23	45	31	22	39	29	20	8
1.25	55	40	30	51	37	28	44	33	25	11
1.50	61	46	35	56	43	33	48	37	29	13
2.00	69	55	44	63	51	41	53	43	36	17
2.50	74	61	51	68	56	47	57	48	41	21
3.00	78	66	56	72	61	53	60	52	45	23
4.00	84	73	65	77	68	60	65	57	51	27
5.00	87	78	70	80	72	65	67	61	56	30
ROOM INDEX	UF(total)									Direct
According to DIN EN 13032-2 2004			Suspended				SHRNOM = 1.25			

C Range: 0 - 360DEG
 C Interval: 15.0DEG
 Test Speed: MEDIUM
 Temperature:25.3DEG
 Operators:
 Test Date:22 September 2021

γ Range: 0 - 180DEG
 γ Interval: 0.5DEG
 Test System:EVERFINE GO-2000B_V1 SYSTEM V2.0.407.13
 Humidity:65.0%
 Test Distance:9.180m [K=1.0000]
 Remarks: VOB226088BL 100LED 2835 3000K 90Ra

ISOCANDELA DIAGRAM

Test:U:230.49V I:0.0759A P:16.830W PF:0.9624 Freq:49.99Hz Lamp Flux:8.33224x100 lm		
NAME: VOB226088BL	TYPE:wall lamp	WEIGHT:2KG
SPEC.:	DIM.:	SERIAL No.:001
MFR.:	SUR.:	Shielding Angle:

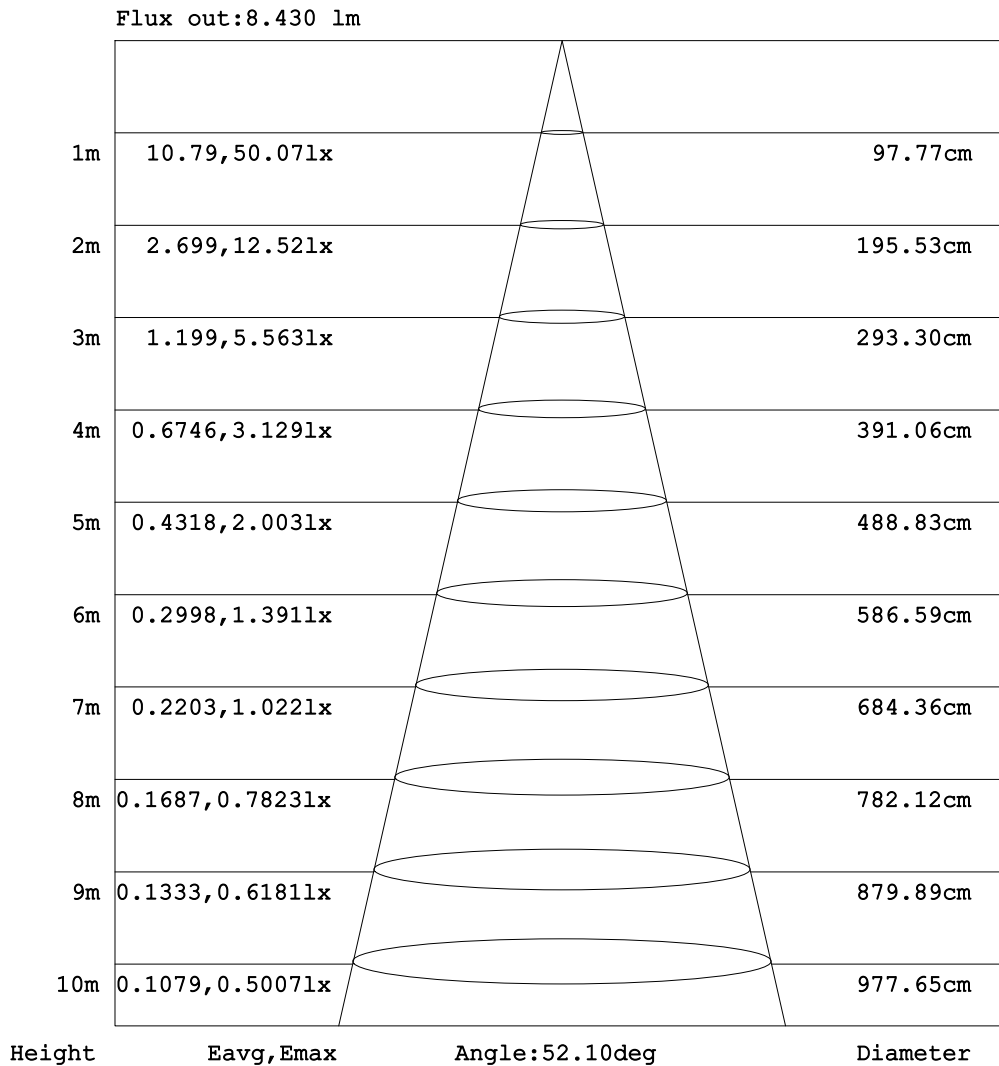


C Range: 0 - 360DEG
 C Interval: 15.0DEG
 Test Speed: MEDIUM
 Temperature: 25.3DEG
 Operators:
 Test Date: 22 September 2021

γ Range: 0 - 180DEG
 γ Interval: 0.5DEG
 Test System: EVERFINE GO-2000B_V1 SYSTEM V2.0.407.13
 Humidity: 65.0%
 Test Distance: 9.180m [K=1.0000]
 Remarks: VOB226088BL 100LED 2835 3000K 90Ra

AAI Figure

Test:U:230.49V I:0.0759A P:16.830W PF:0.9624 Freq:49.99Hz Lamp Flux:8.33224x100 lm		
NAME: VOB226088BL	TYPE:wall lamp	WEIGHT:2KG
SPEC.:	DIM.:	SERIAL No.:001
MFR.:	SUR.:	Shielding Angle:



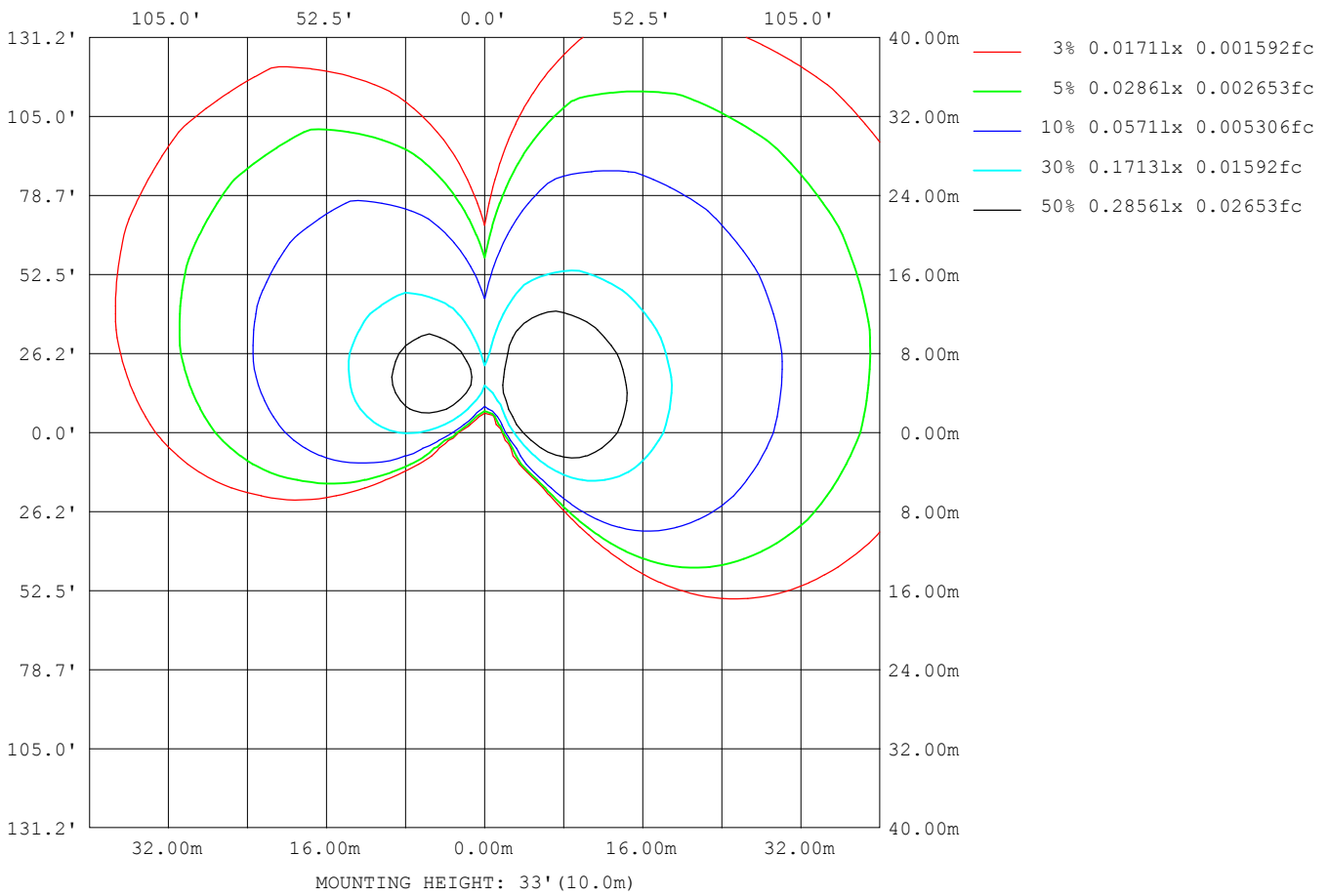
Note: The Curves indicate the illuminated area and the average illumination when the luminaire is at different distance.

C Range: 0 - 360DEG
 C Interval: 15.0DEG
 Test Speed: MEDIUM
 Temperature: 25.3DEG
 Operators:
 Test Date: 22 September 2021

γ Range: 0 - 180DEG
 γ Interval: 0.5DEG
 Test System: EVERFINE GO-2000B_V1 SYSTEM V2.0.407.13
 Humidity: 65.0%
 Test Distance: 9.180m [K=1.0000]
 Remarks: VOB226088BL 100LED 2835 3000K 90Ra

ISOLUX DIAGRAM

Test:U:230.49V I:0.0759A P:16.830W PF:0.9624 Freq:49.99Hz Lamp Flux:8.33224x100 lm		
NAME: VOB226088BL	TYPE:wall lamp	WEIGHT:2KG
SPEC.:	DIM.:	SERIAL No.:001
MFR.:	SUR.:	Shielding Angle:



C Range: 0 - 360DEG
 C Interval: 15.0DEG
 Test Speed: MEDIUM
 Temperature:25.3DEG
 Operators:
 Test Date:22 September 2021

γ Range: 0 - 180DEG
 γ Interval: 0.5DEG
 Test System:EVERFINE GO-2000B_V1 SYSTEM V2.0.407.13
 Humidity:65.0%
 Test Distance:9.180m [K=1.0000]
 Remarks: VOB226088BL 100LED 2835 3000K 90Ra

LED Avg.L Report

Test:U:230.49V I:0.0759A P:16.830W PF:0.9624 Freq:49.99Hz Lamp Flux:8.33224x100 lm		
NAME: VOB226088BL	TYPE:wall lamp	WEIGHT:2KG
SPEC.:	DIM.:	SERIAL No.:001
MFR.:	SUR.:	Shielding Angle:

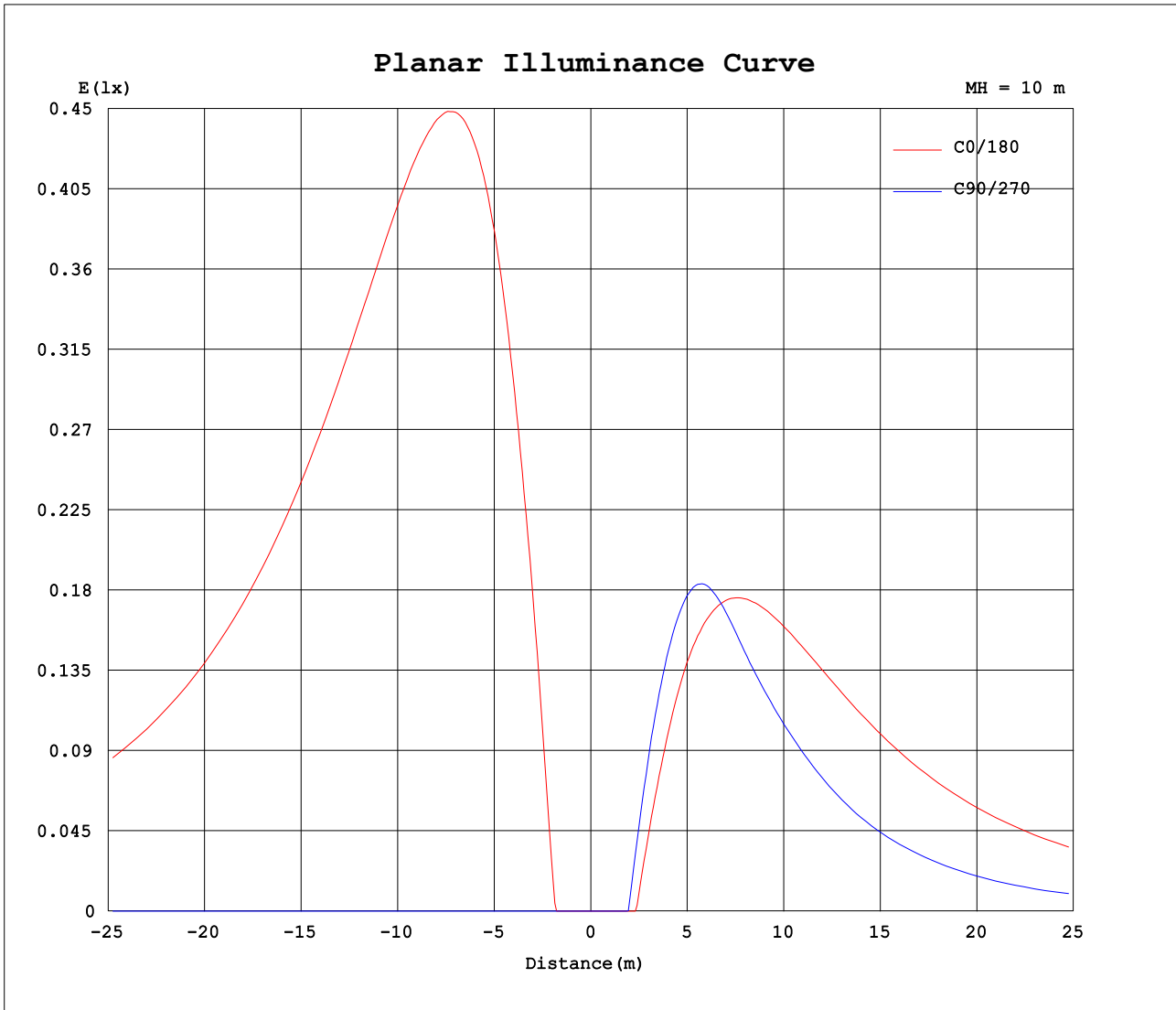
AvgL	cd/m2
L_0~180 (65) av	1054552
L_0~180 (75) av	1882334
L_0~180 (85) av	5832584
L_90~270 (65) av	98508
L_90~270 (75) av	110799
L_90~270 (85) av	127803
L_45 (65) av	809558
L_45 (75) av	1453083
L_45 (85) av	4515051

Standard: GB/T 29293-2012

C Range: 0 - 360DEG
 C Interval: 15.0DEG
 Test Speed: MEDIUM
 Temperature:25.3DEG
 Operators:
 Test Date:22 September 2021

γ Range: 0 - 180DEG
 γ Interval: 0.5DEG
 Test System:EVERFINE GO-2000B_V1 SYSTEM V2.0.407.13
 Humidity:65.0%
 Test Distance:9.180m [K=1.0000]
 Remarks: VOB226088BL 100LED 2835 3000K 90Ra

Planar Illuminance Curve



C Range: 0 - 360DEG
 C Interval: 15.0DEG
 Test Speed: MEDIUM
 Temperature: 25.3DEG
 Operators:
 Test Date: 22 September 2021

γ Range: 0 - 180DEG
 γ Interval: 0.5DEG
 Test System: EVERFINE GO-2000B_V1 SYSTEM V2.0.407.13
 Humidity: 65.0%
 Test Distance: 9.180m [K=1.0000]
 Remarks: VOB226088BL 100LED 2835 3000K 90Ra

LUMINOUS DISTRIBUTION INTENSITY DATA

Test:U:230.49V I:0.0759A P:16.830W PF:0.9624 Freq:49.99Hz Lamp Flux:8.33224x100 lm		
NAME: VOB226088BL	TYPE:wall lamp	WEIGHT:2KG
SPEC.:	DIM.:	SERIAL No.:001
MFR.:	SUR.:	Shielding Angle:

Table--1

UNIT: cd

C (DEG) \ γ (DEG)	0	15	30	45	60	75	90	105	120	135	150	165	180	195	210	225	240	255	270
0	0.00	0.00	0.00	0.00	0.00	0.00	0.00	0.00	0.00	0.00	0.00	0.00	0.00	0.00	0.00	0.00	0.00	0.00	0.00
5	0.00	0.00	0.00	0.00	0.00	0.00	0.00	0.00	0.00	0.00	0.00	0.00	0.00	0.00	0.00	0.00	0.00	0.00	0.00
10	0.00	0.00	0.00	0.00	0.00	0.00	0.00	0.00	0.00	0.00	0.00	0.00	0.00	0.00	2.52	3.71	2.76	0.08	0.00
15	14.5	5.97	0.00	0.00	0.00	0.00	0.00	0.00	0.00	0.00	0.00	0.00	2.50	9.34	14.2	16.6	15.6	11.1	6.89
20	31.1	18.6	3.78	0.00	0.00	0.00	0.00	0.00	0.00	0.00	0.00	0.00	9.76	19.6	26.4	29.9	28.8	24.0	15.3
25	48.0	31.2	11.4	0.00	0.00	0.00	0.00	0.00	0.00	0.00	0.00	2.38	17.2	29.8	38.8	43.5	42.2	36.6	22.7
30	65.0	44.1	19.4	0.00	0.00	0.00	0.00	0.00	0.00	0.00	0.00	6.35	24.5	40.1	51.4	57.2	55.6	47.0	28.3
35	81.5	56.7	27.1	0.00	0.00	0.00	0.00	0.00	0.00	0.00	0.00	10.3	31.7	50.3	63.8	70.7	68.7	55.1	30.5
40	97.2	68.8	34.5	0.72	0.00	0.00	0.00	0.00	0.00	0.00	0.00	14.1	38.6	60.0	75.7	83.7	81.2	62.5	30.3
45	112	80.2	41.7	3.19	0.00	0.00	0.00	0.00	0.00	0.00	0.00	17.7	45.2	69.3	87.0	96.1	93.0	69.6	29.7
50	126	90.7	48.3	5.57	0.00	0.00	0.00	0.00	0.00	0.00	0.00	21.1	51.3	77.9	97.6	108	104	75.2	28.5
55	138	100	54.5	7.77	0.00	0.00	0.00	0.00	0.00	0.00	0.00	24.1	56.9	85.7	107	119	114	79.5	26.6
60	149	109	59.9	9.73	0.00	0.00	0.00	0.00	0.00	0.00	0.00	26.9	62.0	92.8	116	128	123	82.3	24.2
65	159	116	64.7	11.4	0.00	0.00	0.00	0.00	0.00	0.00	0.00	29.3	66.4	99.0	124	137	131	84.7	21.0
70	167	122	68.7	12.9	0.00	0.00	0.00	0.00	0.00	0.00	0.00	31.4	70.0	104	130	144	138	86.0	17.5
75	173	127	71.9	14.1	0.00	0.00	0.00	0.00	0.00	0.00	0.00	33.0	72.9	108	135	150	143	86.1	14.5
80	178	131	74.1	14.9	0.00	0.00	0.00	0.00	0.00	0.00	0.00	34.2	75.0	111	139	154	147	85.7	10.4
85	180	133	75.4	15.4	0.00	0.00	0.00	0.00	0.00	0.00	0.00	35.0	76.3	113	141	157	150	84.9	5.63
90	181	133	75.9	15.6	0.00	0.00	0.00	0.00	0.00	0.00	0.00	35.4	76.8	114	142	158	151	84.2	3.26
95	180	133	75.5	15.6	0.00	0.00	0.00	0.00	0.00	0.00	0.00	35.2	76.4	113	142	157	149	84.0	4.96
100	178	131	74.4	15.3	0.00	0.00	0.00	0.00	0.00	0.00	0.00	34.6	75.2	111	139	154	147	84.4	10.2
105	173	128	72.4	14.6	0.00	0.00	0.00	0.00	0.00	0.00	0.00	33.6	73.2	108	136	150	143	84.4	15.0
110	167	123	69.4	13.6	0.00	0.00	0.00	0.00	0.00	0.00	0.00	32.2	70.4	104	130	144	138	83.9	18.3
115	160	117	65.7	12.4	0.00	0.00	0.00	0.00	0.00	0.00	0.00	30.3	66.8	99.2	124	137	131	82.5	21.5
120	150	110	61.1	10.8	0.00	0.00	0.00	0.00	0.00	0.00	0.00	28.0	62.5	93.1	116	128	123	80.6	24.5
125	139	102	55.9	9.00	0.00	0.00	0.00	0.00	0.00	0.00	0.00	25.4	57.5	86.0	108	119	114	77.6	27.2
130	127	92.5	50.0	6.89	0.00	0.00	0.00	0.00	0.00	0.00	0.00	22.4	52.0	78.2	98.0	108	104	73.7	29.7
135	114	82.2	43.4	4.57	0.00	0.00	0.00	0.00	0.00	0.00	0.00	19.1	45.9	69.6	87.5	96.2	92.8	68.9	31.0
140	99.2	71.0	36.4	2.15	0.00	0.00	0.00	0.00	0.00	0.00	0.00	15.6	39.3	60.4	76.2	83.8	81.2	62.7	31.5
145	83.7	59.1	29.1	0.00	0.00	0.00	0.00	0.00	0.00	0.00	0.00	11.8	32.4	50.6	64.3	70.8	68.9	55.3	31.8
150	67.3	46.6	21.4	0.00	0.00	0.00	0.00	0.00	0.00	0.00	0.00	7.89	25.2	40.5	51.9	57.3	56.0	47.2	29.9
155	50.5	33.9	13.4	0.00	0.00	0.00	0.00	0.00	0.00	0.00	0.00	3.92	17.8	30.1	39.3	43.5	42.6	36.7	24.3
160	33.5	21.1	5.63	0.00	0.00	0.00	0.00	0.00	0.00	0.00	0.00	0.00	10.3	19.7	26.7	29.7	29.1	23.9	16.5
165	16.6	8.11	0.00	0.00	0.00	0.00	0.00	0.00	0.00	0.00	0.00	0.00	3.01	9.41	14.3	16.3	15.7	10.7	7.82
170	0.54	0.00	0.00	0.00	0.00	0.00	0.00	0.00	0.00	0.00	0.00	0.00	0.00	0.01	2.54	3.38	2.59	0.02	0.00
175	0.00	0.00	0.00	0.00	0.00	0.00	0.00	0.00	0.00	0.00	0.00	0.00	0.00	0.00	0.00	0.00	0.00	0.00	0.00
180	0.00	0.00	0.00	0.00	0.00	0.00	0.00	0.00	0.00	0.00	0.00	0.00	0.00	0.00	0.00	0.00	0.00	0.00	0.00

C Range: 0 - 360DEG
 C Interval: 15.0DEG
 Test Speed: MEDIUM
 Temperature:25.3DEG
 Operators:
 Test Date:22 September 2021

γ Range: 0 - 180DEG
 γ Interval: 0.5DEG
 Test System:EVERFINE GO-2000B_V1 SYSTEM V2.0.407.13
 Humidity:65.0%
 Test Distance:9.180m [K=1.0000]
 Remarks: VOB226088BL 100LED 2835 3000K 90Ra

LUMINOUS DISTRIBUTION INTENSITY DATA

Test:U:230.49V I:0.0759A P:16.830W PF:0.9624 Freq:49.99Hz Lamp Flux:8.33224x100 lm		
NAME: VOB226088BL	TYPE:wall lamp	WEIGHT:2KG
SPEC.:	DIM.:	SERIAL No.:001
MFR.:	SUR.:	Shielding Angle:

Table--2

UNIT: cd

C (DEG) γ (DEG)	285	300	315	330	345															
0	0.00	0.00	0.00	0.00	0.00															
5	0.00	0.00	0.00	0.00	0.00															
10	0.00	0.00	1.47	3.43	3.03															
15	10.1	11.2	18.3	21.6	20.9															
20	18.9	26.1	38.9	42.3	40.2															
25	26.6	47.8	60.1	63.4	59.9															
30	34.3	68.9	80.8	84.4	79.4															
35	44.7	87.4	101	105	98.3															
40	59.5	105	120	124	116															
45	76.8	121	138	142	133															
50	90.8	136	155	159	149															
55	103	151	171	175	163															
60	113	163	185	189	176															
65	123	175	197	201	187															
70	131	184	208	211	196															
75	138	192	216	219	204															
80	143	198	222	225	209															
85	147	201	225	228	212															
90	146	202	226	230	213															
95	137	201	225	228	212															
100	132	195	221	225	208															
105	133	182	215	219	203															
110	133	172	207	211	196															
115	125	164	192	201	186															
120	115	159	174	189	175															
125	105	152	157	174	163															
130	93.8	139	144	156	148															
135	80.3	124	133	134	133															
140	63.0	108	121	114	116															
145	47.5	90.6	103	95.5	97.8															
150	36.8	72.1	82.6	80.5	75.7															
155	28.4	50.7	61.9	64.1	52.0															
160	20.3	28.3	40.6	43.6	31.6															
165	11.3	13.0	19.6	22.7	18.2															
170	1.17	0.00	2.02	3.75	2.65															
175	0.00	0.00	0.00	0.00	0.00															
180	0.00	0.00	0.00	0.00	0.00															

C Range: 0 - 360DEG
 C Interval: 15.0DEG
 Test Speed: MEDIUM
 Temperature:25.3DEG
 Operators:
 Test Date:22 September 2021

γ Range: 0 - 180DEG
 γ Interval: 0.5DEG
 Test System:EVERFINE GO-2000B_V1 SYSTEM V2.0.407.13
 Humidity:65.0%
 Test Distance:9.180m [K=1.0000]
 Remarks: VOB226088BL 100LED 2835 3000K 90Ra