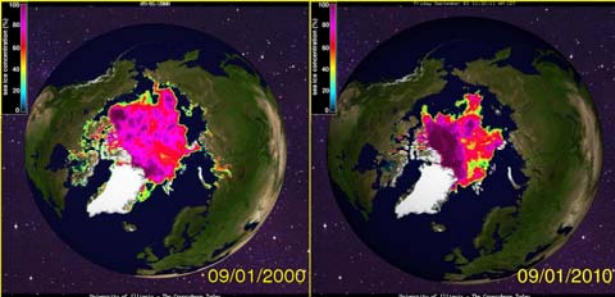


CLIMIGRATION: Climate-Induced Community Displacement

Climate change threatens community infrastructure as well as lives.

Permanent Relocation is the only Durable Solution.

Robin Bronen, Resilience and Adaptation Program, University of Alaska Fairbanks



Arctic Sea Ice Retreat/ University of Illinois

Temperatures in Alaska have increased 3.5 C since 1975. Permafrost melts, arctic sea ice decreases and storms increase in intensity. In Alaska, 184 communities are affected by flooding and erosion. Community habitability and the lives of residents are at risk.

Adaptive Governance

Social-ecological indicators: Saline intrusion of groundwater; Public infrastructure repeatedly damaged; Lives threatened

Protection in Place



Community Relocation:

shoreline protection not feasible, lives and health of residents and access to water and housing threatened.



Guiding Principles of Climigration: A Human Rights Response

- Families and tribes must remain together
- Infrastructure must be improved
- Impoverishment and social and cultural disintegration prevented.

Kivalina Seawall



Newtok Permafrost Thawing



No institutional framework exists to decide when and how communities relocate. Disaster Relief and Hazard Mitigation no longer protect.

Methodology:

***Interviews, Participation in tribal, federal and state government community relocation meetings; Housing Survey and Literature review**

