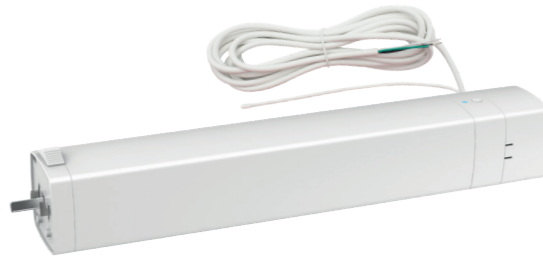




VTi® DRAPERY ELECTRIC MOTOR | 1 Nm

6-800-MD-50US1 (100 - 240V AC | Unidirectional RF + Standard)



AS QUIET AS
29dB
VTi® RELIION MOTORS



FEATURES

- One way & center open fabrication options.
- Automatically adjust its electronic limits.
- Operation as quiet as 29 dB.
- 5 wires connection supports Control through RF and dry contact.
- Manual pull function: automatically open or close the drapery when pulling on the fabric to initiate movement.
- Stop on contact: the motor stops when it finds an obstacle that offers resistance to its movement.
- Manual operation option when there is a power outage.
- 433.92 MHz radio frequency communication.
- Maximum weight capacity: 88 lb | 40 kg.
- Smart control with VTi® Smart Hub, anytime, anywhere.
- Compatible with leading brands of Home Automation Systems.

APPLICATIONS



**Drapery
One Way**



**Drapery
Center Open**

RF CONTROL SOLUTIONS



Point RE-LION Remote
2 | 6 | 16 CH LED
Unidirectional
6-800-AT-POU02 | 06 | 16



Point RE-LION Remote
2 | 6 Channels
Bidirectional
6-800-AT-POB02 | 06



Chic RE-LION Remote
2 | 6 Channels
Bidirectional
6-800-AT-CHB02 | 06



**Escalate RE-LION
Timer Remote**
6 Channels Display
Bidirectional
6-800-AT-ESB06



**Escalate RE-LION
Remote**
16 Channels Display
Bidirectional
6-800-AT-ESB16



**Deco One RE-LION
Wall Switch**
2 | 6 Channels
Bidirectional
6-800-AT-DEB02 | 06

SMART SOLUTIONS



**VTi® RE-LION
SMARHUB**
6-800-HA-VTI01



**VTi® RE-LION
SMARHUB PLUS**
6-800-HA-VTI02



**VTi HomeMate+
App**

COMPATIBLE SYSTEMS



Ripple Fold



Pinch Pleat

DRY CONTACT CONTROL



**Single Pole Double Throw (SPDT)
Switch for Standard Motors**
6-100-61-20727
Does not support RF control.

CERTIFICATIONS



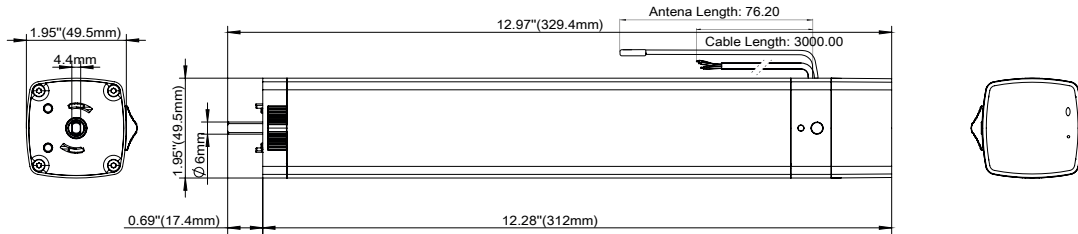
i Bidirectional Remotes are also compatible with Unidirectional motors. Refer to programming instruction manual for details.



VTi® DRAPERY ELECTRIC MOTOR | 1 Nm

6-800-MD-50US1 (100 - 240V AC | Unidirectional RF + Standard)

DIMENSIONS



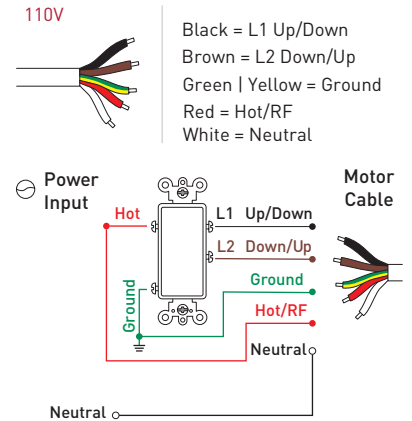
*All measurements are reflected in millimeters.

TECHNICAL SPECS

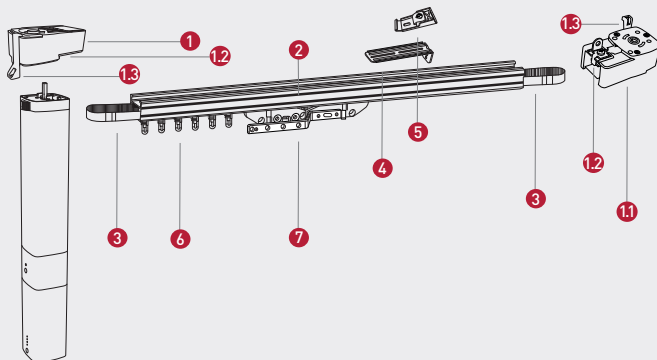
Torque	1 Nm	Current	0.6 A
Speed	12, 14, 16 cm/s	Thermal Protection	6 Minutes
Sound Level	29 dB	Voltage Supply	Input: 100-240V AC (50/60 Hz)
Limits	Electronic	Radio Frequency	433.92 MHz
Index Protection	IP 40	Weight Capacity*	88 lb 40 kg
Power	60 W	Working Temp.	14 ~ 131 °F -10 ~ 55 °C
Cable Type	SVT #18AWG [3x0.8mm2]	RF Modulation	ASK
Cable Length	118 in 3.00 m		

*The maximum weight capacity is calculated under optimal circumstances. Actual results may vary. Specifications are subject to change without notice.

WIRING



SYSTEM COMPONENTS



	DASH Track	EURO Track
1-1.1	Drapery Gearbox - DASH Track 6-800-DA-MD002	Drapery Gearbox - EURO Track 6-800-DA-MD001 Secondary Gear End - EURO Track 6-800-DA-S0003 (Optional Item)
1.2	Track lock (Included with each Drapery Gearbox.)	Track lock (Included with each Drapery Gearbox.)
1.3	Fabric Holder Clip 1.3a. Ripple Fold: 6-700-DA-S0011 1.3b. Pinch Pleat System: 6-700-DM-00011 (Included with each Drapery Gearbox.)	Fabric Holder Clip 1.3a. Ripple Fold: 6-800-DA-S0011 1.3b. Pinch Pleat System: 6-700-DM-00011 (Included with each Drapery Gearbox.)
2	Aluminum track - DASH Track 6-700-DM-00009	Aluminum track - EURO Track 6-800-DA-S0W19
3	Interior belt - DASH Track 6-700-DM-00005	Interior Belt - EURO Track 6-800-DA-S0005
4	"L" bracket 0-030-CA-D6600	"L" bracket 0-030-CA-D6600
5	Ceiling Installation Clip - DASH Track 6-700-DM-00010	Ceiling Installation Clip - EURO Track 6-800-DA-S0004
6	Carriers - DASH Track 6a. Ripple Fold system: 6-700-DM-00013 00014 00015 00016 6b. Pinch Pleat system: 6-700-DM-00006	Carriers - EURO Track 6a. Ripple Fold System: 6-800-DA-S0013 S0014 S0015 S0016 6b. Pinch Pleat System: 6-800-DA-S0006
7	Master Carrier - DASH Track 7a. Ripple Fold system: 6-700-DM-00018 7b. Pinch Pleat system: 6-700-DM-00008	Master Carrier - EURO Track Ripple Fold & Pinch Pleat Systems: 6-800-DA-S0018
7.1	Snap Tape for Ripple Fold system 6-700-DM-00017 (Not shown in the diagram)	Snap Tape for Ripple Fold system 6-700-DM-00017 (Not shown in the diagram)
-	Splice - DASH Track 6-700-DM-00012 (Optional Item)	Splice - EURO Track 6-800-DA-S0012 (Optional Item)