



VERTILUX

TECHNOLOGY & INTEGRATION

PROGRAMMING MANUAL

MANUAL DE PROGRAMACIÓN

VTi® RE-LION MOTORS

6-800-MB-250W1 | Wand Control*

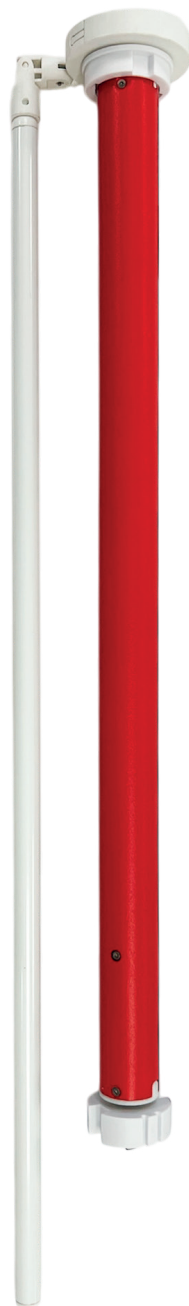
Wire-free

Rechargeable

Battery powered

ENGLISH

ESPAÑOL | PAG. 12



*Does not support RF Control



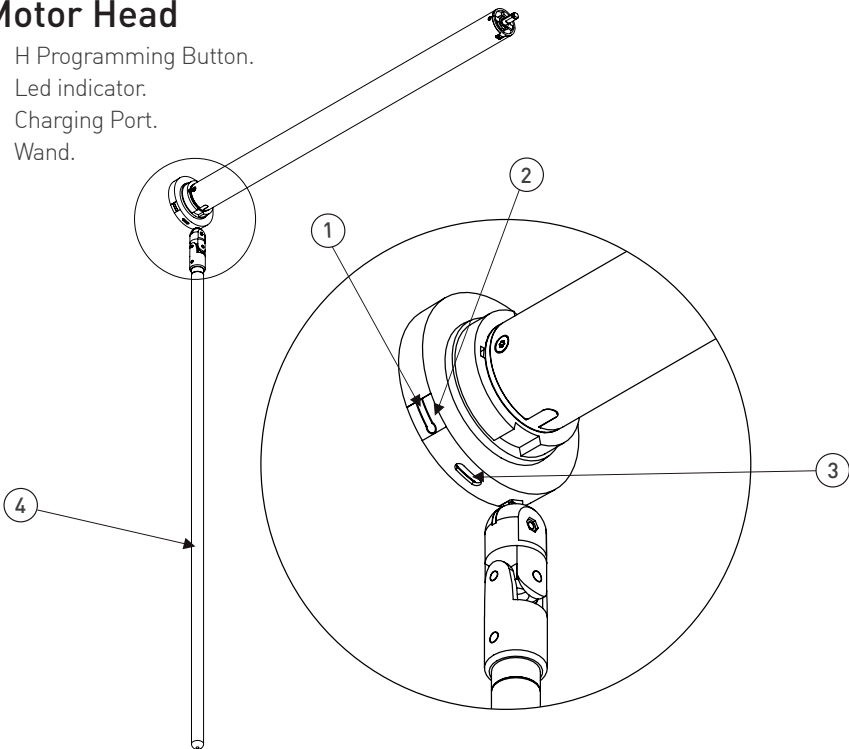
Important instructions and information

1. Ensure that the motor is compatible with the associated brackets or accessories. Incorrect installation can lead to serious injury and will void manufacturer's liability and warranty.
2. Do not expose the motor to water, moisture, humidity or extreme temperatures.
3. Do not lift the motor by grabbing the wand.
4. This motor has a 12V built-in rechargeable Li-ion battery pack with integrated charge management system. Max input voltage: 5V/2A.
5. Please charge it before using for the first time, make sure it is fully charged before first use.
6. Please do not use motor when charging.
7. When the battery voltage is low, the LED will flicker eight times to indicate a low voltage warning when the motor starts. Once fully charged, the LED on the motor head will remain solid blue.

Product Information

Motor Head

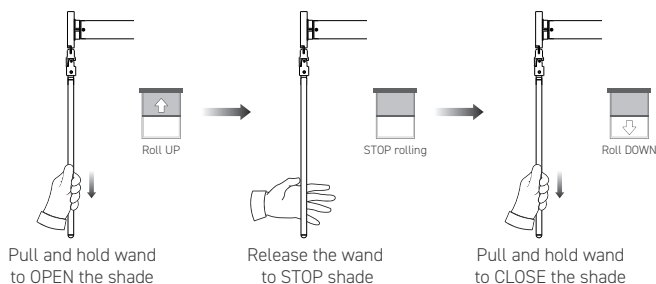
1. H Programming Button.
2. Led indicator.
3. Charging Port.
4. Wand.



Motor Operation

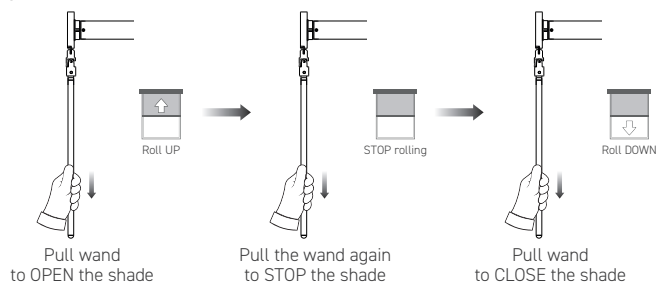
Motor operation if the limits are not set

① Considering the motor is installed on the left side.



Motor operation once limits are set

① Considering the motor is installed on the left side.

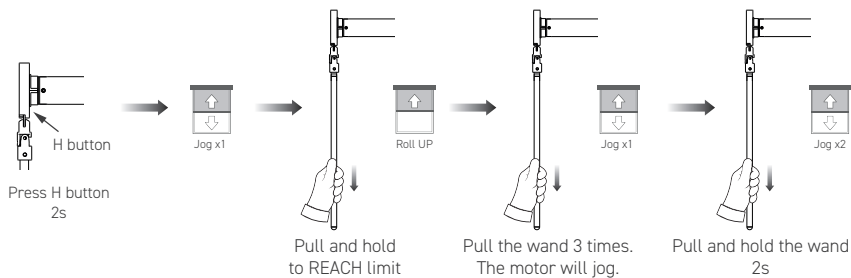


Configuration Instructions

① The motor can be installed on the left or right side. To ensure proper setup, adjust the upper limit first if the motor is on the right side, or the lower limit first if it's on the left side.

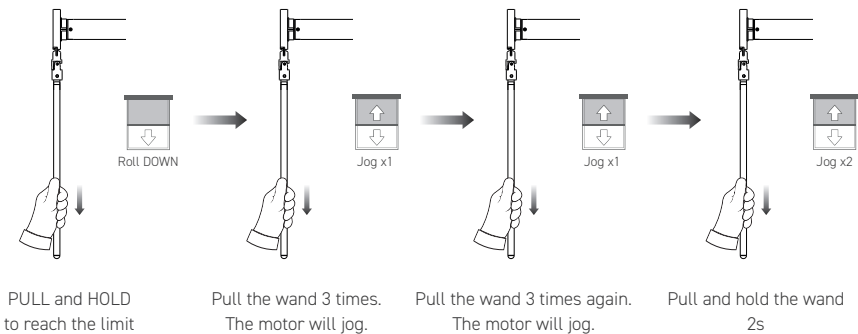
Setting the First Limit

1. Press H button for 2s until the motor jogs.
2. Pull and hold the rod until you reach the desired limit.
3. Pull the wand 3 times. The motor will jog.
4. Pull and hold the wand for 2 seconds until the motor jogs twice.



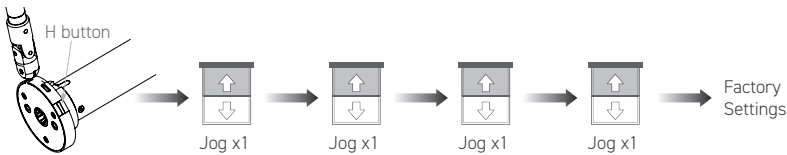
Setting the Second Limit

- 1. Pull and hold the wand until you reach the desired limit.
- 2. Pull the wand 3 times. The motor will jog.
- 3. Pull the wand 3 more times. The motor will jog.
- 4. Pull and hold the wand for 2 seconds until the motor jogs twice.



Resetting the Motor to Factory Settings

Press and Hold the H button on the motor head for 16 seconds until the motor jogs four times, then release it. All the motor settings will be deleted.



TROUBLESHOOTING		
Problem	Cause	Solution
The motor is not responding	1. Battery depleted. 2. Motor inactive since the limits have not been set.	1. Recharge the motor with the compatible charger. 2. Press and hold H button on the motor head for 2 seconds until the motor jogs.
LED indicator is blinking	1. Low battery.	1. Recharge the motor using a compatible charger for 6-8 hours until the LED turns solid blue.