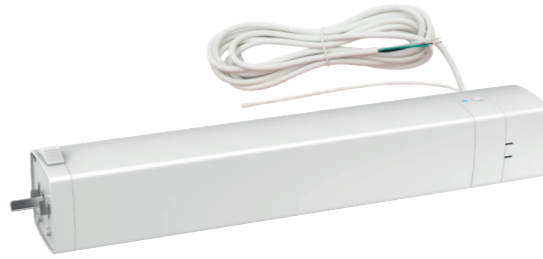




# VTi® DRAPERY ELECTRIC MOTOR | 2 Nm

6-800-MD-50UE2 (100 - 240V AC | Unidirectional)



AS QUIET AS  
**29dB**  
VTi® RELION MOTORS



## FEATURES

- One way & center open fabrication options.
- Automatically adjust its electronic limits.
- Operation as quiet as 29 dB.
- Manual pull function: automatically open or close the drapery when pulling on the fabric to initiate movement.
- Stop on contact: the motor stops when it finds an obstacle that offers resistance to its movement.
- Manual operation option when there is a power outage.
- 433.92 MHz radio frequency communication.
- Maximum weight capacity: 132 lb | 59 kg.
- Smart control with VTi® Smart Hub, anytime, anywhere.
- Compatible with leading brands of Home Automation Systems.

## APPLICATIONS



Drapery  
One Way



Drapery  
Center Open

## COMPATIBLE SYSTEMS



Ripple Fold



Pinch Pleat



## SMART SOLUTIONS



VTi® RE-LION  
SMARTHUB  
6-800-HA-VTI01



VTi® RE-LION  
SMARTHUB PLUS  
6-800-HA-VTI02



VTi HomeMate+  
App

## CONTROL SOLUTIONS



Point Celtic  
Remote

2 Channels Unidirectional  
6-800-AT-POU02



Point Celtic  
Remote

6 Channels Unidirectional  
6-800-AT-POU06



Point Celtic  
Remote

16 Channels Unidirectional  
6-800-AT-POU16



Chic Remote

2 Channels Bidirectional  
6-800-AT-CHB02



Chic Remote

6 Channels Bidirectional  
6-800-AT-CHB06



Escalate Remote

6 Channels Timer + Display  
Bidirectional  
6-800-AT-ESB06



Escalate Remote

16 Channels Display  
Bidirectional  
6-800-AT-ESB16

## CERTIFICATIONS

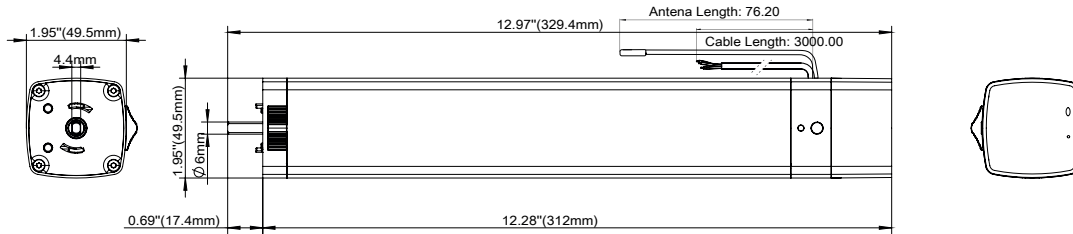




# VTi® DRAPERY ELECTRIC MOTOR | 2 Nm

6-800-MD-50UE2 (100 - 240V AC | Unidirectional)

## DIMENSIONS



\*All measurements are reflected in millimeters.

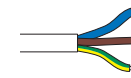
## TECHNICAL SPECS

<b>Torque</b>	2 Nm	<b>Current</b>	0.6 A
<b>Speed</b>	12, 14, 16 cm/s	<b>Thermal Protection</b>	6 Minutes
<b>Sound Level</b>	29 dB	<b>Voltage Supply</b>	Input: 100-240V AC (50/60 Hz)
<b>Limits</b>	Electronic	<b>Radio Frequency</b>	433.92 MHz
<b>Index Protection</b>	IP 40	<b>Weight Capacity*</b>	132 lb   59.8 kg
<b>Power</b>	60 W	<b>Working Temp.</b>	14 ~ 131 °F   -10 ~ 55 °C
<b>Cable Type</b>	SVT #18AWG (3x0.8 mm2)	<b>RF Modulation</b>	ASK
<b>Cable Length</b>	118 in   3.00 m		

\*The maximum weight capacity is calculated under optimal circumstances. Actual results may vary. Specifications are subject to change without notice.

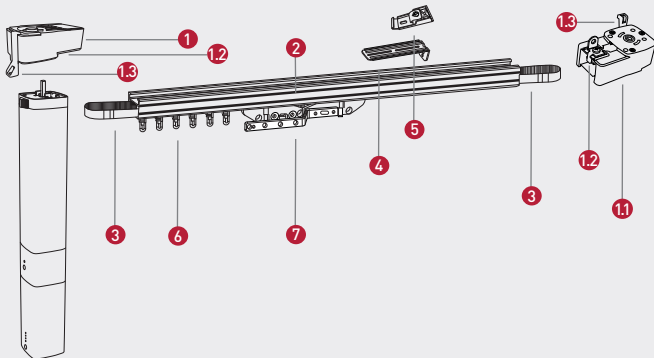
## WIRING

100 - 240V AC



Blue = Neutral  
Brown = Live  
Green | Yellow = Ground

## SYSTEM COMPONENTS



	DASH Track	EURO Track
1-1.1	<b>Drapery Gearbox - DASH Track</b> 6-800-DA-MD002	<b>Drapery Gearbox - EURO Track</b> 6-800-DA-MD001 <b>Secondary Gear End - EURO Track</b> 6-800-DA-S0003 (Optional Item)
1.2	<b>Track lock</b> (Included with each Drapery Gearbox.)	<b>Track lock</b> (Included with each Drapery Gearbox.)
1.3	<b>Fabric Holder Clip</b> 1.3a. Ripple Fold: 6-700-DA-S0011 1.3b. Pinch Pleat System: 6-700-DM-00011 (Included with each Drapery Gearbox.)	<b>Fabric Holder Clip</b> 1.3a. Ripple Fold: 6-800-DA-S0011 1.3b. Pinch Pleat System: 6-700-DM-00011 (Included with each Drapery Gearbox.)
2	<b>Aluminum track - DASH Track</b> 6-700-DM-00009	<b>Aluminum track - EURO Track</b> 6-800-DA-S0W19
3	<b>Interior belt - DASH Track</b> 6-700-DM-00005	<b>Interior Belt - EURO Track</b> 6-800-DA-S0005
4	<b>"L" bracket</b> 0-030-CA-06600	<b>"L" bracket</b> 0-030-CA-06600
5	<b>Ceiling Installation Clip - DASH Track</b> 6-700-DM-00010	<b>Ceiling Installation Clip - EURO Track</b> 6-800-DA-S0004
6	<b>Carriers - DASH Track</b> 6a. Ripple Fold system: 6-700-DM-00013   00014   00015   00016 6b. Pinch Pleat system: 6-700-DM-00006	<b>Carriers - EURO Track</b> 6a. Ripple Fold System: 6-800-DA-S0013   S0014   S0015   S0016 6b. Pinch Pleat System: 6-800-DA-S0006
7	<b>Master Carrier - DASH Track</b> 7a. Ripple Fold system: 6-700-DM-00018 7b. Pinch Pleat system: 6-700-DM-00008	<b>Master Carrier - EURO Track</b> Ripple Fold & Pinch Pleat Systems: 6-800-DA-S0018
7.1	<b>Snap Tape for Ripple Fold system</b> 6-700-DM-00017 (Not shown in the diagram)	<b>Snap Tape for Ripple Fold system</b> 6-700-DM-00017 (Not shown in the diagram)
-	<b>Splice - DASH Track</b> 6-700-DM-00012 (Optional Item)	<b>Splice - EURO Track</b> 6-800-DA-S0012 (Optional Item)