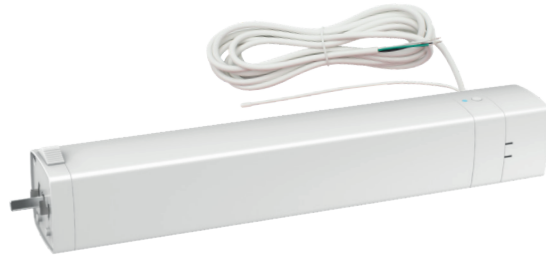




VTi® DRAPERY ELECTRIC MOTOR | 2 Nm

6-800-MD-50BE2 (100 - 240V AC | Bidirectional)



AS QUIET AS
29dB
VTi® RELIION MOTORS



FEATURES

- 433 MHz Bi-Directional RF communication allows control of the position of the shades and keeps them track anytime.
- One way & center open fabrication options.
- Automatically adjust its electronic limits.
- Operation as quiet as 29 dB.
- Manual pull function: automatically open or close the drapery when pulling on the fabric to initiate movement.
- Stop on contact: the motor stops when it finds an obstacle that offers resistance to its movement.
- Manual operation option when there is a power outage.
- 433.92 MHz radio frequency communication.
- Maximum weight capacity: 132 lb | 59.8 kg.
- Smart control with VTi® Smart Hub, anytime, anywhere.
- Compatible with leading brands of Home Automation Systems.

APPLICATIONS



Drapery
One Way

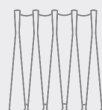


Drapery
Center Open

COMPATIBLE SYSTEMS



Ripple Fold



Pinch Pleat



SMART SOLUTIONS



VTi® RE-LION
SMARTHUB PLUS
6-800-HA-VTI02



VTi HomeMate+
App

CONTROL SOLUTIONS



Chic Celtic Remote
2 Channels
Bidirectional
6-800-AT-CHB02



Chic Celtic Remote
6 Channels
Bidirectional
6-800-AT-CHB06



Escalate Celtic Remote
6 Channels
Bidirectional
6-800-AT-ESBT6



Escalate Celtic Remote
16 Channels
Bidirectional
6-800-AT-ESB16

CERTIFICATIONS

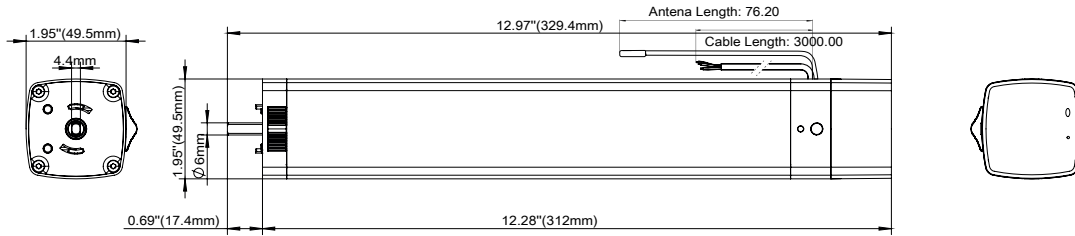




VTi® DRAPERY ELECTRIC MOTOR | 2 Nm

6-800-MD-50BE2 (100 - 240V AC | Bidirectional)

DIMENSIONS



*All measurements are reflected in millimeters.

TECHNICAL SPECS

Torque	2 Nm	Current	0.6 A
Speed	12, 14, 16 cm/s	Thermal Protection	6 Minutes
Sound Level	29 dB	Voltage Supply	Input: 100-240V AC (50/60 Hz)
Limits	Electronic	Radio Frequency	433.92 MHz
Index Protection	IP 40	Weight Capacity*	132 lb 59.8 kg
Power	60 W	Working Temp.	14 ~ 131 °F -10 ~ 55 °C
Cable Type	SVT #18AWG (3x0.8mm2)	RF Modulation	FSK
Cable Length	118 in 3.00 m		

*The maximum weight capacity is calculated under optimal circumstances. Actual results may vary. Specifications are subject to change without notice.

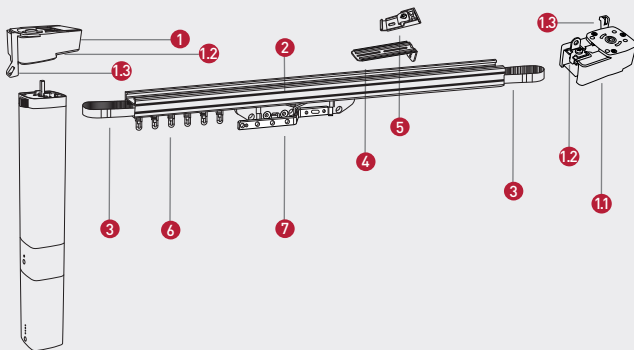
WIRING

100 - 240V AC



Blue = Neutral
Brown = Live
Green | Yellow = Ground

SYSTEM COMPONENTS



	DASH Track	EURO Track
1-1.1	Drapery Gearbox - DASH Track 6-800-DA-MD002	Drapery Gearbox - EURO Track 6-800-DA-MD001 Secondary Gear End - EURO Track 6-800-DA-S0003 (Optional Item)
1.2	Track lock (Included with each Drapery Gearbox.)	Track lock (Included with each Drapery Gearbox.)
1.3	Fabric Holder Clip 1.3a. Ripple Fold: 6-700-DA-S0011 1.3b. Pinch Pleat System: 6-700-DM-00011 (Included with each Drapery Gearbox.)	Fabric Holder Clip 1.3a. Ripple Fold: 6-800-DA-S0011 1.3b. Pinch Pleat System: 6-700-DM-00011 (Included with each Drapery Gearbox.)
2	Aluminum track - DASH Track 6-700-DM-00009	Aluminum track - EURO Track 6-800-DA-S0W19
3	Interior belt - DASH Track 6-700-DM-00005	Interior Belt - EURO Track 6-800-DA-S0005
4	"L" bracket 0-030-CA-06600	"L" bracket 0-030-CA-06600
5	Ceiling Installation Clip - DASH Track 6-700-DM-00010	Ceiling Installation Clip - EURO Track 6-800-DA-S0004
6	Carriers - DASH Track 6a. Ripple Fold system: 6-700-DM-00013 00014 00015 00016 6b. Pinch Pleat system: 6-700-DM-00006	Carriers - EURO Track 6a. Ripple Fold System: 6-800-DA-S0013 S0014 S0015 S0016 6b. Pinch Pleat System: 6-800-DA-S0006
7	Master Carrier - DASH Track 7a. Ripple Fold system: 6-700-DM-00018 7b. Pinch Pleat system: 6-700-DM-00008	Master Carrier - EURO Track Ripple Fold & Pinch Pleat Systems: 6-800-DA-S0018
7.1	Snap Tape for Ripple Fold system 6-700-DM-00017 (Not shown in the diagram)	Snap Tape for Ripple Fold system 6-700-DM-00017 (Not shown in the diagram)
-	Splice - DASH Track 6-700-DM-00012 (Optional Item)	Splice - EURO Track 6-800-DA-S0012 (Optional Item)