



# VERTILUX

IDEAS FOR YOUR SPACE

## COFRE 30 SYSTEM

COFRES





# COFRE 30 SYSTEM

TECHNICAL SHEET | FICHA TÉCNICA



## FEATURES

The Cofre 30 is a modern and minimalistic retractable cassette system designed to cover large dimensions.

Its innovative engineering make the installation and operation of this system the safest and easiest on the market.

The Cofre 30 is manufactured according to the European quality standard and under a very strict quality control system.

## APPLICATIONS



Retractable  
Awnings

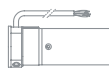


Outdoor Use

## OPERATION OPTIONS



Crank



VTi® Celtic  
Motor





# COFRE 30 SYSTEM

## TECHNICAL SHEET | FICHA TÉCNICA

### TECHNICAL SPECS

<b>Maximum Width</b>	Wall: 20'   6 m Ceiling: 16'   5 m	<b>Mounting Options</b>	Wall or Ceiling
<b>Maximum Projection</b>	11.5'   3.5 m	<b>Range of Inclination</b>	5° to 70° in Wall or Ceiling Installation
<b>Tube Diameter Ø</b>	70 mm up to 5 m of width 78 mm up to 6 m of width	<b>Operation Option</b>	Crank or Motor
		<b>Minimum Torque for Motorization</b>	50 Nm

### WIND RESISTANCE

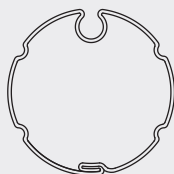
PROJECTION	WIDTH								
	2.0 m	2.5 m	3.0 m	3.5 m	4.0 m	4.5 m	5.0 m	5.5 m	6.0 m
1.5 m	2	2	2	2	2	2	2	2	2
2.0 m		2	2	2	2	2	2	2	2
2.5 m			2	2	2	2	2	2	1
3.0 m				2	1	1	1	1	1
3.5 m					1	1	1	1	1

CLASS 1 28 km/h

CLASS 2 38 km/h

\*Wind resistance and safety values (according to standard UNE-EN 13561:2015).

### RECOMMENDED TUBES



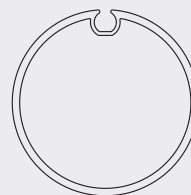
Up to 16.4' | 5 m of Width

2 3/4" | 70 mm

Galvanized Steel  
Grooved Tube

0-154-TU-G7021

Length: 19.6'



Up to 19.6' | 6 m of Width

3" | 78 mm

Galvanized Steel  
Grooved Tube

0-154-TU-G7821

Length: 19.6'



# COFRE 30 SYSTEM

TECHNICAL SHEET | FICHA TÉCNICA

## MINIMUM ASSEMBLY WIDTHS (INCLUDING CAPS)

---

PROJECTION	MINIMUM WIDTH
1.5	1.95
2.0	2.45
2.5	2.95
3.0	3.45
3.5	3.95

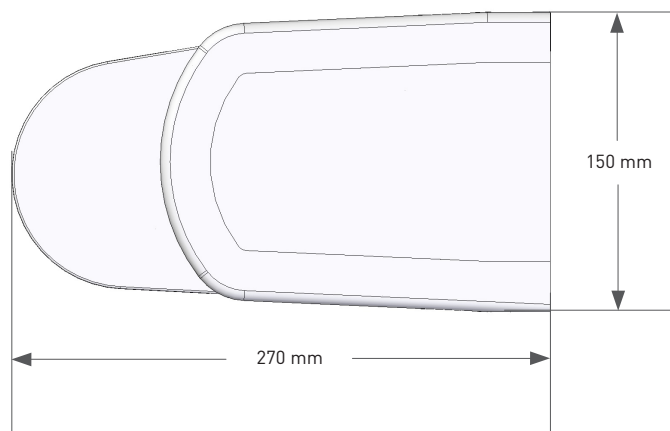




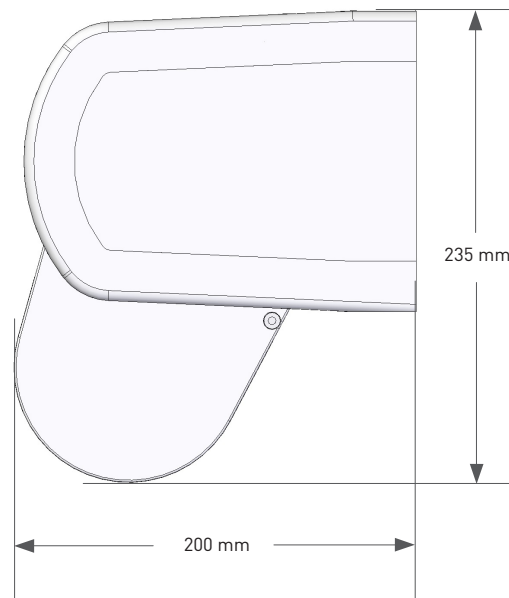
# COFRE 30 SYSTEM

DIMENSIONS | DIMENSIONES

## WALL INSTALLATION

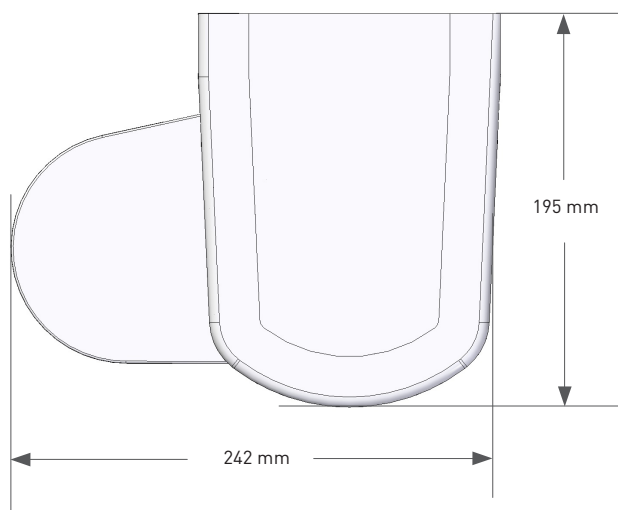


Minimum slope 5°

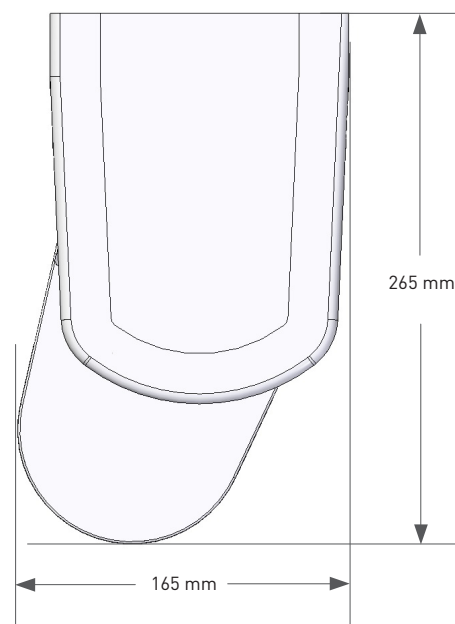


Maximum slope 70°

## CEILING INSTALLATION



Minimum slope 5°



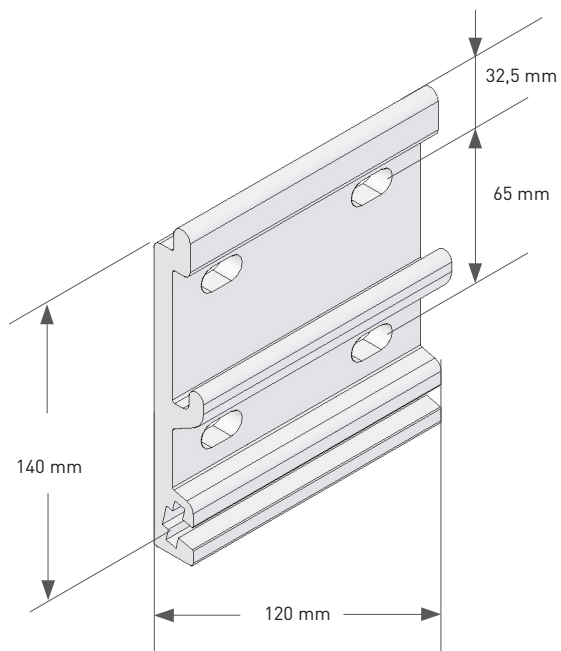
Maximum slope 70°



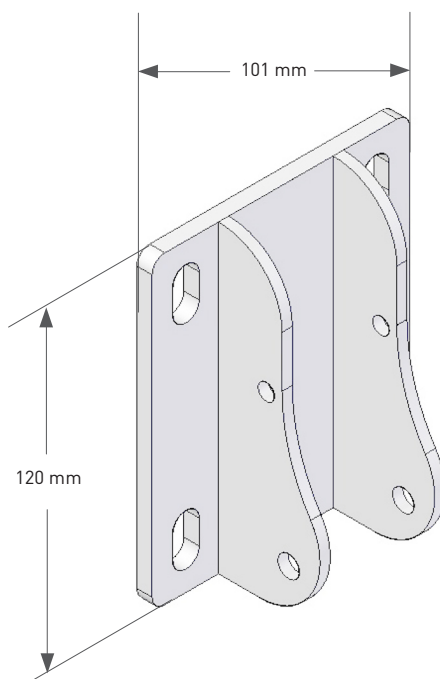
# COFRE 30 SYSTEM

DIMENSIONS | DIMENSIONES

## WALL PLATE



## CENTRAL SUPPORT PLATE



COFRE 30 SYSTEM

# INSTALLATION OPTIONS

OPCIONES DE INSTALACIÓN

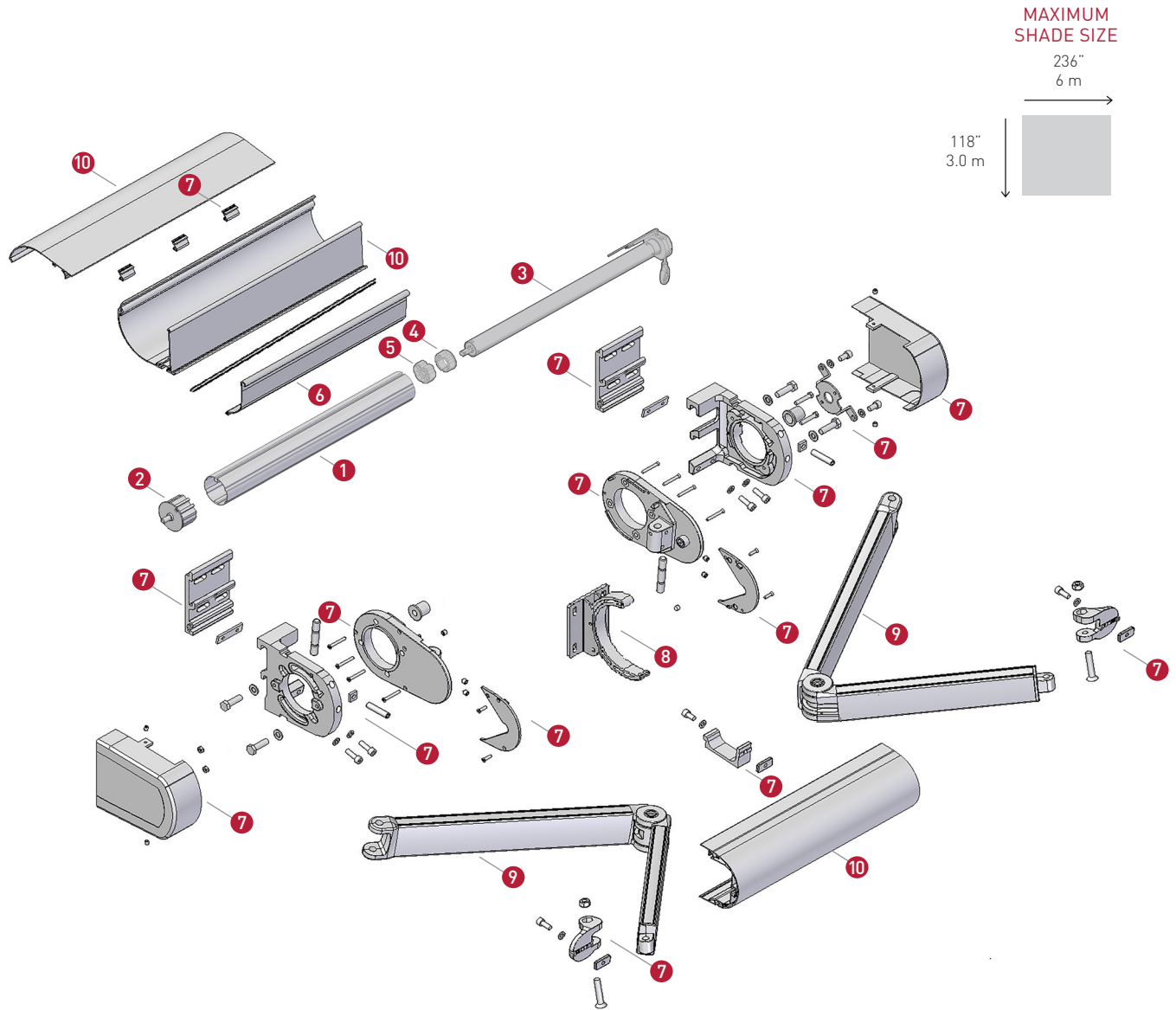




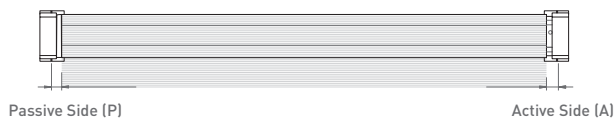


# MOTORIZED COFRE 30 SYSTEM WITH 70 mm TUBE

## SCHEMATIC DIAGRAM | DESPIECE DEL SISTEMA



### DEDUCTIONS



Roller Tube	A + P =	169 mm
-------------	---------	--------



# MOTORIZED COFRE 30 SYSTEM WITH 70 mm TUBE

## SCHEMATIC DIAGRAM | DESPIECE DEL SISTEMA

### LEGEND | LEYENDA

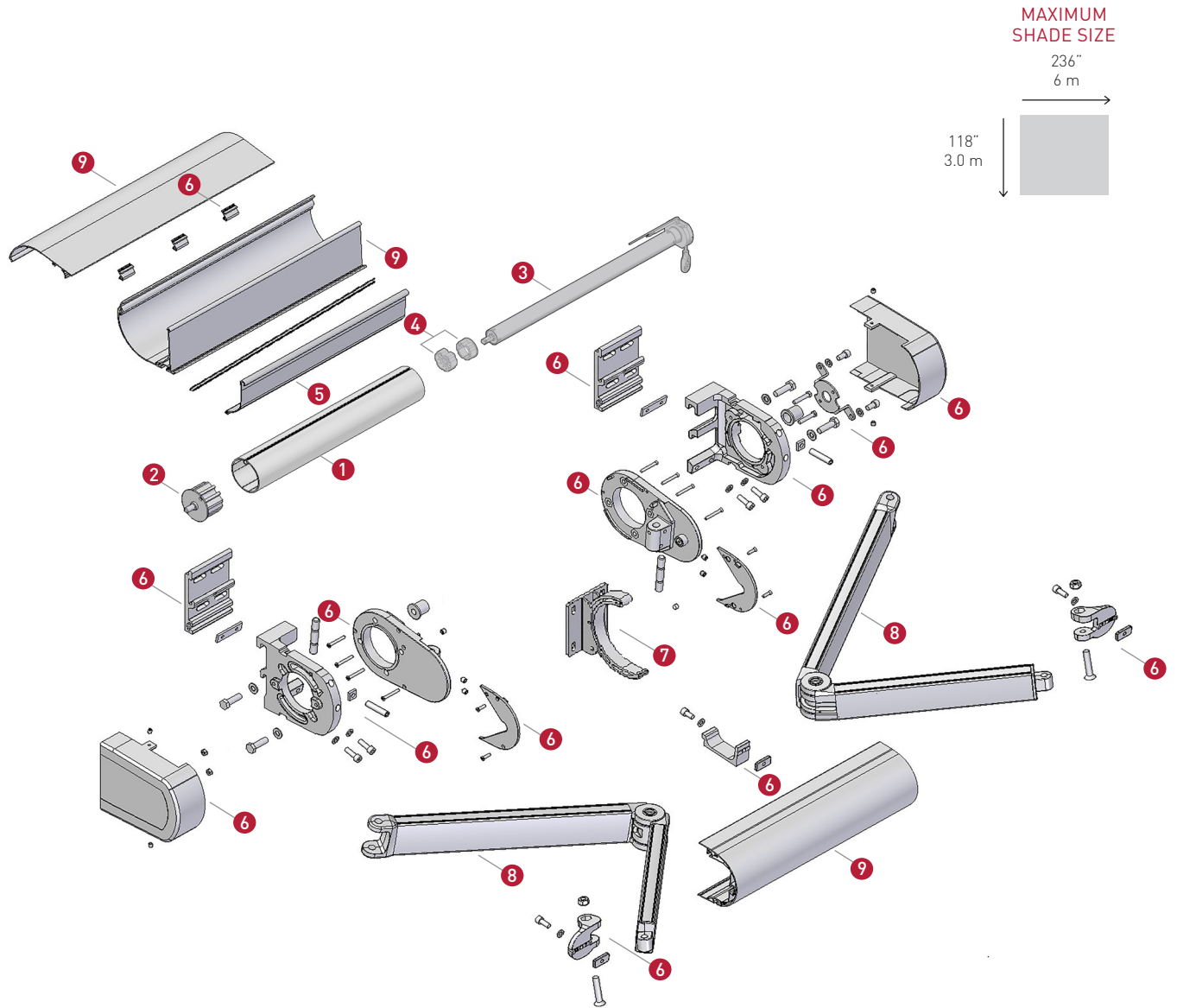
NO.	DESCRIPTION	CODE	QTY	UNIT
1	2 ¼" (70 mm) Galvanized Steel Grooved Tube (Available in 19.6'   6 m)	0-154-TU-G7021	-*	FT
-	6 mm Plastic Insert for 2 ¼"   60 mm, 2 ¾"   70 mm, 3"   78 mm Galvanized Tube (Not shown in the diagram)	0-140-07-79010	-*	FT
2	2 ¾" (70 mm) Nylon Point (with 12 mm Round Tip Axis)	0-140-07-70367	1	EA
3	VTi® Celtic Mechanical Limits - Manual Override Motor   50 Nm (Multiple options available. See <i>Compatible Motors Section</i> )	6-700-CM-45M50	1	EA
4	Crown for 45 mm Motors and 2 ¾"   70mm Tubes	6-700-AC-DH570	1	EA
5	Drive for 45 mm "A" Shaft Motors and 2 ¾"   70mm Tubes	6-700-AD-DL570	1	EA
6	T-Cofre PVC Anti-friction Strip 1.50 m	0-140-07-44480	-*	FT
7	T-Cofre Box Accesory Kit - White	0-140-07-44580	1	KIT
-	Hand Crank Model Roma - White (Not shown in the diagram) 3.2'   1.00 m (10), 4.0'   1.20 m (15), 5.0'   1.50 m (20), 5.5'   1.70 m (25), 6.5'   2.00 m (30), 7.2'   2.20 m (35), 8.2'   2.50 m (40)	0-140-07-730XX	1	EA
8	T-Cofre Central Support - White	0-140-07-44370	1	EA
9	Articulated Arm Set - White 5'   1.50 m (10), 6.5'   2.00 m (20), 8'   2.50 m (30), 10'   3.00 m (40), 11'   3.50 m (50)	0-140-07-317XX	1	SET
10	T-Cofre Box 3 Profiles Set, 6 m - White	0-140-07-44506	1	FT

\*The quantity per shade varies depending on the width of the shade.

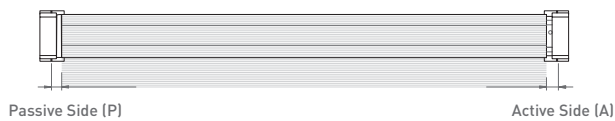


# MOTORIZED COFRE 30 SYSTEM WITH 78 mm TUBE

## SCHEMATIC DIAGRAM | DESPIECE DEL SISTEMA



### DEDUCTIONS



Passive Side (P)	Active Side (A)
Roller Tube	
A + P =	169 mm





# MOTORIZED COFRE 30 SYSTEM WITH 78 mm TUBE

## SCHEMATIC DIAGRAM | DESPIECE DEL SISTEMA

### LEGEND | LEYENDA

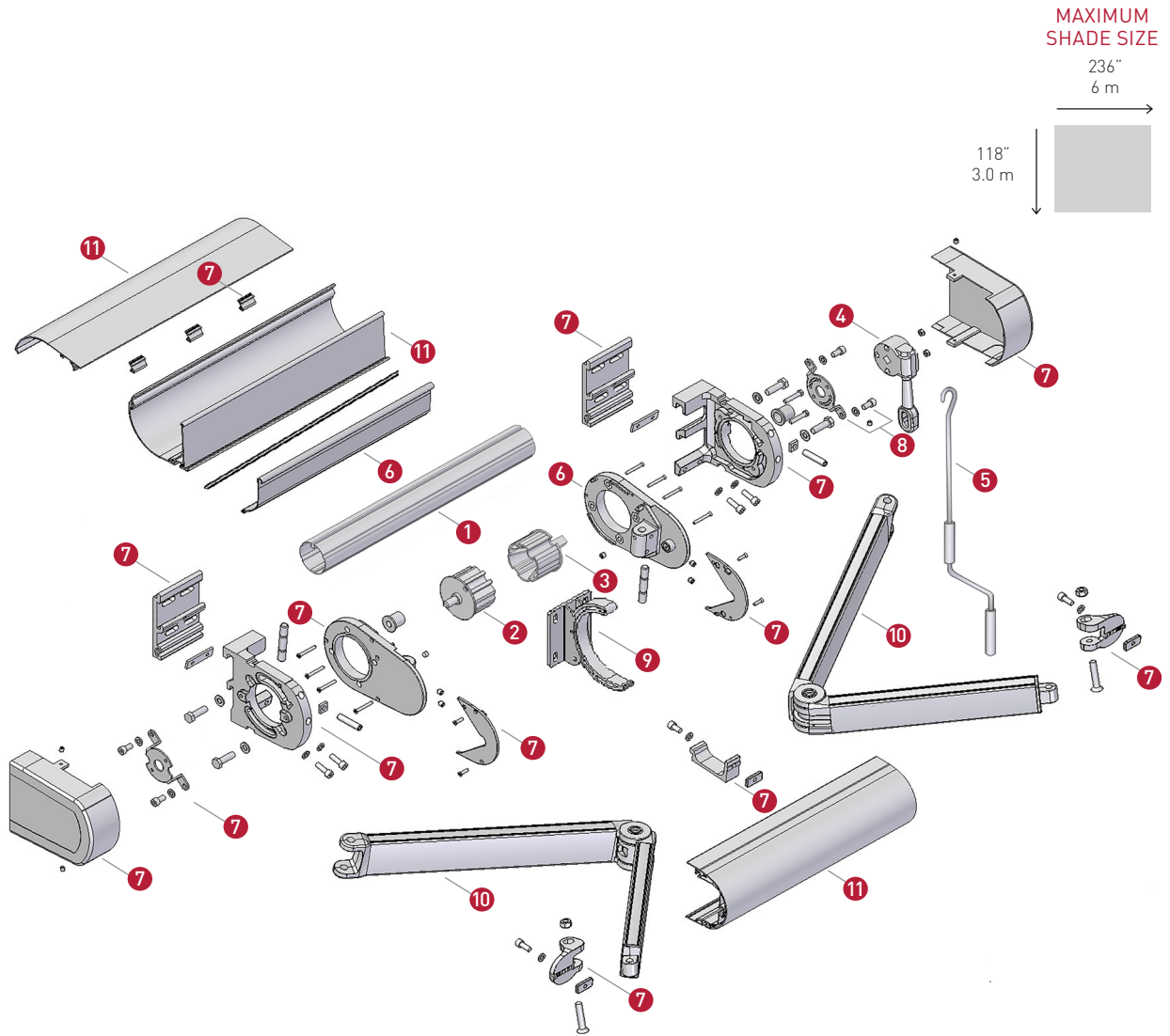
NO.	DESCRIPTION	CODE	QTY	UNIT
1	3" (78 mm) Galvanized Steel Grooved Tube (Available in 19.6'   6 m)	0-154-TU-G7821	-*	FT
-	6 mm Plastic Insert for 2 1/4"   60 mm, 2 3/4"   70 mm, 3"   78 mm Galvanized Tube (Not shown in the diagram)	0-140-07-79010	-*	FT
2	3" (78 mm) Nylon Point (with 12 mm Round Tip Axis)	0-140-07-70325	1	EA
3	VTi® Celtic Mechanical Limits - Manual Override Motor   50 Nm (Multiple options available. See <i>Compatible Motors Section</i> )	6-700-CM-45M50	1	EA
4	Crown and Drive for 45 mm Motors and 3"   78 mm Tubes *(Set pieces are also sold separately: Crown: 6-700-AC-DH100   Drive: -700-AD-DL180)	6-700-AS-45078*	1	SET
5	T-Cofre PVC Anti-friction Strip 1.50 m	0-140-07-44480	-*	FT
6	T-Cofre Box Accesory Kit - White	0-140-07-44580	1	KIT
-	Hand Crank Model Roma - White (Not shown in the diagram) 3.2'   1.00 m (10), 4.0'   1.20 m (15), 5.0'   1.50 m (20), 5.5'   1.70 m (25), 6.5'   2.00 m (30), 7.2'   2.20 m (35), 8.2'   2.50 m (40)	0-140-07-730XX	1	EA
7	T-Cofre Central Support - White	0-140-07-44370	1	EA
8	Articulated Arm Set - White 5'   1.50 m (10), 6.5'   2.00 m (20), 8'   2.50 m (30), 10'   3.00 m (40), 11'   3.50 m (50)	0-140-07-317XX	1	SET
9	T-Cofre Box 3 Profiles Set, 6 m - White	0-140-07-44506	1	FT

\*The quantity per shade varies depending on the width of the shade.

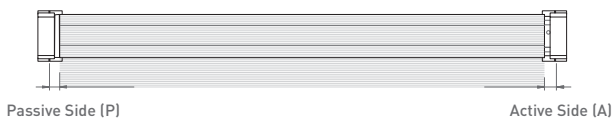


# MANUAL COFRE 30 SYSTEM WITH 70 mm TUBE

## SCHEMATIC DIAGRAM | DESPIECE DEL SISTEMA



### DEDUCTIONS



Roller Tube	A + P =	169 mm
-------------	---------	--------



# MANUAL COFRE 30 SYSTEM WITH 70 mm TUBE

## SCHEMATIC DIAGRAM | DESPIECE DEL SISTEMA

### LEGEND | LEYENDA

NO.	DESCRIPTION	CODE	QTY	UNIT
1	2 3/4" (70 mm) Galvanized Steel Grooved Tube (Available in 19.6'   6 m)	0-154-TU-G7021	-*	FT
-	6 mm Plastic Insert for 2 1/4"   60 mm, 2 3/4"   70 mm, 3"   78 mm Galvanized Tube (Not shown in the diagram)	0-140-07-79010	-*	FT
2	2 3/4" (70 mm) Nylon Point (with 12 mm Round Tip Axis)	0-140-07-70367	1	EA
3	2 3/4" (70 mm) Nylon Gear Box Holder	0-140-07-70330	1	EA
4	Gear Box 1:7 Threaded - White (Multiple options available. See Gear Box Section)	0-140-07-71120	1	EA
5	Hand Crank Model Roma - White 3.2'   1.00 m (10), 4.0'   1.20 m (15), 5.0'   1.50 m (20), 5.5'   1.70 m (25), 6.5'   2.00 m (30), 7.2'   2.20 m (35), 8.2'   2.50 m (40)	0-140-07-730XX	1	EA
6	T-Cofre PVC Anti-friction Strip 1.50 m	0-140-07-44480	-*	FT
7	T-Cofre Box Accesory Kit - White	0-140-07-44580	1	KIT
8	T-Cofre Box Machine Kit	0-140-07-44540	1	SET
9	T-Cofre Central Support - White	0-140-07-44370	1	EA
10	Articulated Arm Set - White 5'   1.50 m (10), 6.5'   2.00 m (20), 8'   2.50 m (30), 10'   3.00 m (40), 11'   3.50 m (50)	0-140-07-317XX	1	SET
11	T-Cofre Box 3 Profiles Set, 6 m - White	0-140-07-44506	1	FT

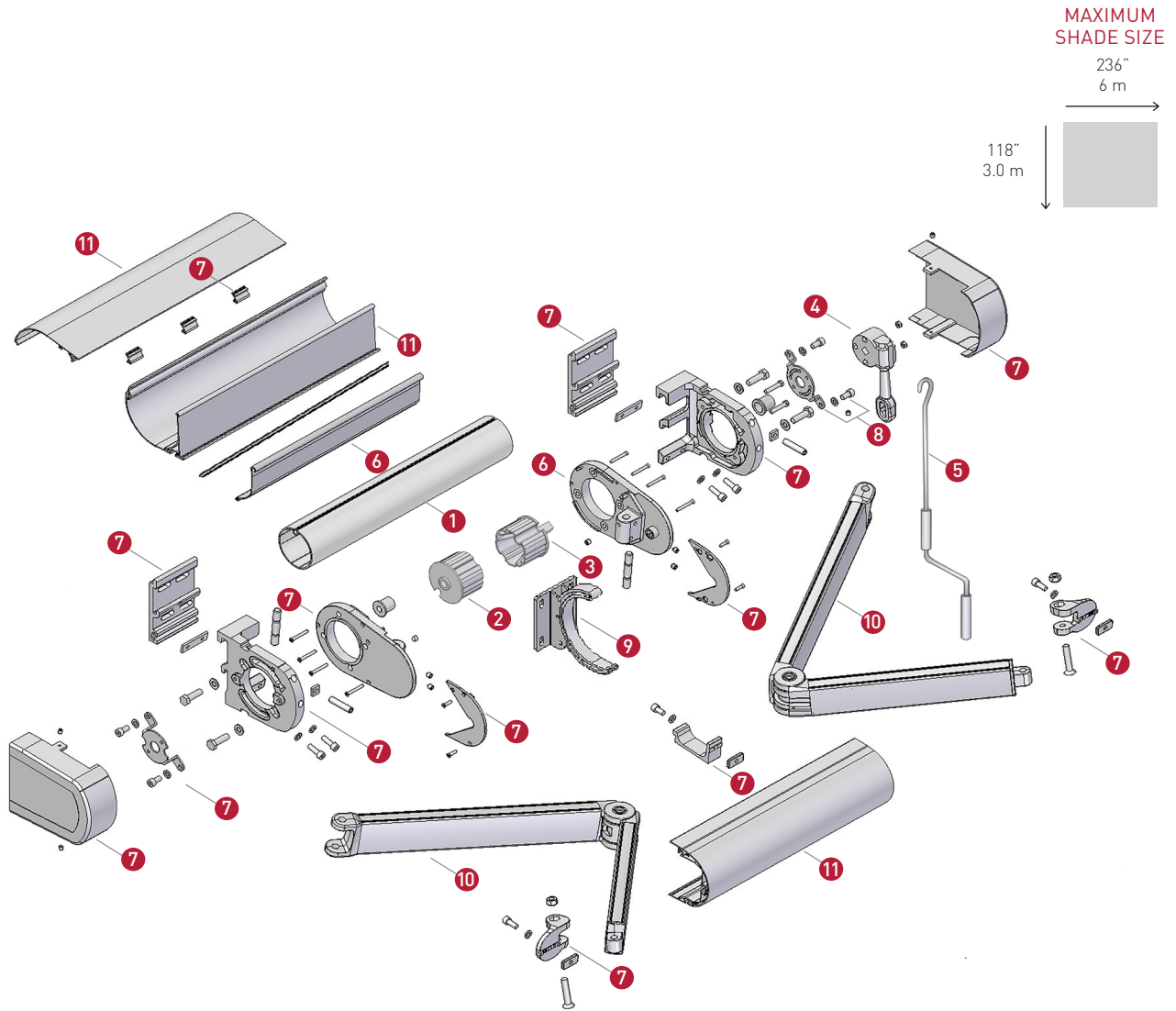
\*The quantity per shade varies depending on the width of the shade.



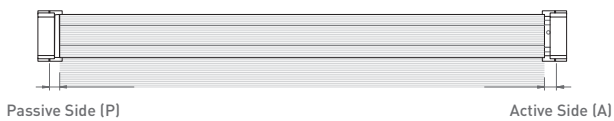


# MANUAL COFRE 30 SYSTEM WITH 78 mm TUBE

## SCHEMATIC DIAGRAM | DESPIECE DEL SISTEMA



### DEDUCTIONS



Roller Tube	A + P =	169 mm
-------------	---------	--------



# MANUAL COFRE 30 SYSTEM WITH 78 mm TUBE

## SCHEMATIC DIAGRAM | DESPIECE DEL SISTEMA

### LEGEND | LEYENDA




NO.	DESCRIPTION	CODE	QTY	UNIT
1	3" (78 mm) Galvanized Steel Grooved Tube (Available in 19.6'   6 m)	0-154-TU-G7821	-*	FT
-	6 mm Plastic Insert for 2 1/4"   60 mm, 2 3/4"   70 mm, 3"   78 mm Galvanized Tube (Not shown in the diagram)	0-140-07-79010	-*	FT
2	3" (78 mm) Nylon Point (with 12 mm Round Tip Axis)	0-140-07-70325	1	EA
3	3" (78 mm) Nylon Gear Box Holder	0-140-07-70378	1	EA
4	Gear Box 1:7 Threaded - White (Multiple options available. See Gear Box Section)	0-140-07-71120	1	EA
5	Hand Crank Model Roma - White 3.2'   1.00 m (10), 4.0'   1.20 m (15), 5.0'   1.50 m (20), 5.5'   1.70 m (25), 6.5'   2.00 m (30), 7.2'   2.20 m (35), 8.2'   2.50 m (40)	0-140-07-730XX	1	EA
6	T-Cofre PVC Anti-friction Strip 1.50 m	0-140-07-44480	-*	FT
7	T-Cofre Box Accesory Kit - White	0-140-07-44580	1	KIT
8	T-Cofre Box Machine Kit	0-140-07-44540	1	SET
9	T-Cofre Central Support - White	0-140-07-44370	1	EA
10	Articulated Arm Set - White 5'   1.50 m (10), 6.5'   2.00 m (20), 8'   2.50 m (30), 10'   3.00 m (40), 11'   3.50 m (50)	0-140-07-317XX	1	SET
11	T-Cofre Box 3 Profiles Set, 6 m - White	0-140-07-44506	1	FT

\*The quantity per shade varies depending on the width of the shade.



## COFRE 30 SYSTEM

COMPATIBLE GEAR BOXES | MÁQUINAS COMPATIBLES

PICTURE	DESCRIPTION	RATIO	MAX. WEIGHT CAPACITY	GEAR BOX WEIGHT
	<b>Arion - Atos Manual System Control - White</b> 0-153-01-01501	1:9	110 kg	710 g
	<b>Awning Gear Box Long 1:11 Crank - White</b> 0-140-07-71110	1:11	121 kg	781 g
	<b>Awning Gear Box 1:16 - White</b> 0-140-07-71115	1:16	145 kg	940 g





## COFRE 30 SYSTEM

COMPATIBLE MOTORS | MOTORES COMPATIBLES

### SERIE Ø45

---



**VTi® Celtic Mechanical Limits Motor | 50 Nm**  
6-700-CM-45R50 (120V) | 6-700-CN-45R50 (230V)



**VTi® Celtic Mechanical Limits | Manual Override Motor | 50 Nm**  
6-700-CM-45M50 (120V) | 6-700-CN-45M50 (230V)

### SERIE Ø55

---



**VTi® Celtic Mechanical Limits | Manual Override Motor | 100 Nm**  
6-700-CM-55M00 (120V) | 6-700-CN-55M00 (230V)



**VTi® Celtic Mechanical Limits | Manual Override  
Standard Motor | 100 Nm**  
6-700-CN-55S00 (230V)



## COFRE 30 SYSTEM

COMPATIBLE TUBES & ADAPTERS FOR MOTORIZATION

TUBOS COMPATIBLES Y ADAPTADORES PARA MOTORIZACIÓN

### SERIE Ø45



2 3/4" (70 mm) GALVANIZED STEEL GROOVED TUBE

CODE	DESCRIPTION	CROWN	DRIVE
0-154-TU-G7021	2 3/4" (70 mm) Galvanized Steel Grooved Tube (Available in 19.6'   6 m)	 6-700-AC-DH570	 6-700-AD-DL570



3" (78 mm) GALVANIZED STEEL GROOVED TUBE

CODE	DESCRIPTION	CROWN	DRIVE
0-154-TU-G7821	3" (78 mm) Galvanized Steel Grooved Tube (Available in 19.6'   6 m)	 6-700-AC-DH100	 6-700-AD-DL180
Set (Crown + Drive)   6-700-AS-45078			

### SERIE Ø55



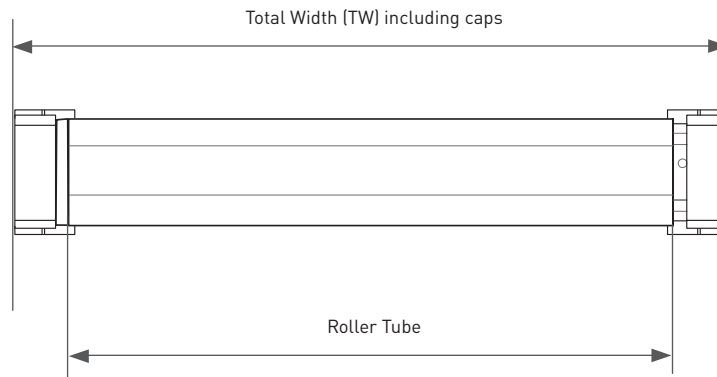
3" (78 mm) GALVANIZED STEEL GROOVED TUBE

CODE	DESCRIPTION	CROWN	DRIVE
0-154-TU-G7821	3" (78 mm) Galvanized Steel Grooved Tube (Available in 19.6'   6 m)	 6-700-AC-DH100	 6-700-AD-DL180
Set (Crown + Drive)   6-700-AS-55M78			



# COFRE 30 SYSTEM

DEDUCTIONS | DEDUCCIONES



	MOTOR	GEAR BOX
Roller Tube	= TW - 183 mm	= TW - 169 mm
Minicofre Profiles	= TW - 165 mm	= TW - 165 mm

\*TW = Total Width including caps

\*\* This chart is provided as a reference for deduction calculation purposes. However, some variations are possible. Vertilux strongly recommends the validation of the specific deductions for every particular project.



VERTILUX

IDEAS FOR YOUR SPACE

1.800.356.8837

[sales@vertilux.com](mailto:sales@vertilux.com)

[vertilux.com](http://vertilux.com)