



# VTi® CELTIC DC CORD LIFT ELECTRONIC LIMITS MOTOR SINGLE SHAFT | 0.6 Nm | 6-700-CL-SSE06



\*Headrail adapters already installed in the motor.



## FEATURES

- Suitable for single Cellular Shades and day and night configuration (2 motors required).
- Recommended for Cellular Shades up to 70" x 118" | 1.7 m x 2.9 m.
- Weight Capacity 7 lb | 3 kg.
- Simple electronic setting of limits and other adjustments.
- An intermediate limit can be preset.
- 433.92 MHz radio frequency communication.
- Suitable for indoor use only.
- DC: direct current, low voltage motor.
- Two power sources available: a low voltage wired with a DC transformer or a wirefree experience with an external rechargeable battery pack.
- Smart control with VTi® Smart Hub, anytime, anywhere.
- Compatible with leading brands of Home Automation Systems.

## REQUIRED ACCESSORY



**4 mm Square Rod Adapter**  
6-700-CL-ACC01

## APPLICATIONS



Cellular Shades

## CONTROL SOLUTIONS



**VTi® Celtic Neo RF Emitter**  
1, 6 & 16 Channels



**VTi® Celtic RF Wireless Pick Up Wall Switch**  
2 & 6 Channels



**VTi® Celtic RF Wireless Wall Switch**  
1 & 6 Channels



**Timer Touch & Wall Switch**  
16 Channels

## SMART SOLUTIONS



**VTi® Celtic Serial Interface**



**VTi® Smart Hub**



**VTi HomeMate App**

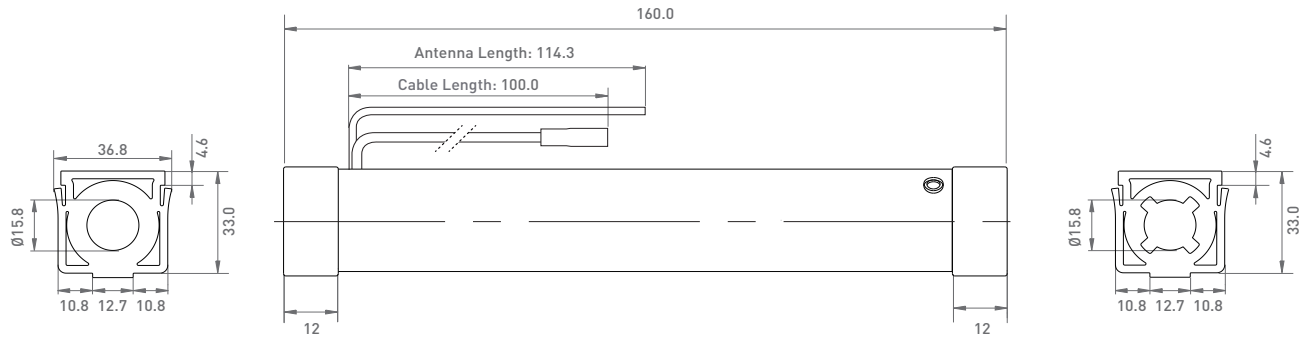
## CERTIFICATIONS





# VTI® CELTIC DC CORD LIFT ELECTRONIC LIMITS MOTOR SINGLE SHAFT | 0.6 Nm | 6-700-CL-SSE06

## DIMENSIONS



\*All measurements are reflected in millimeters.

## TECHNICAL SPECS

<b>Torque</b>	0.6 Nm	<b>Current</b>	1.2 A
<b>Speed</b>	34 rpm	<b>Thermal Protection</b>	7 Minutes
<b>Sound Level</b>	45 dB	<b>Voltage Supply</b>	7.4 V DC
<b>Limits</b>	Electronic	<b>Radio Frequency</b>	433.92 Hz
<b>Index Protection</b>	IP 44	<b>Maximum Shade Size</b>	70" x 118"   1.7m x 2.9m
<b>Power</b>	8.9 W	<b>Weight Capacity*</b>	7 lb   3 kg
<b>Cable Type</b>	24 AWG	<b>Working Temp.</b>	14 ~ 140 °F   -10 ~ 60 °C
<b>Cable Length</b>	4 in   10 cm	<b>Modulation Type</b>	ASK

\*The maximum weight capacity is calculated under optimal circumstances. Actual results may vary. Specifications are subject to change without notice.

## POWER SOLUTIONS

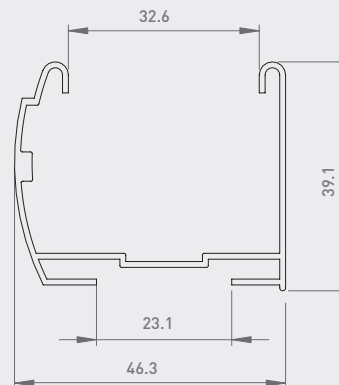
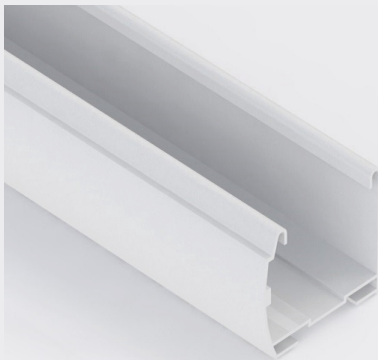


**Li-ion Battery  
Charger**  
8.4 V DC | 2.5 A  
6-700-CM-DC003



**External  
Battery Pack**  
6-700-MA-EBPCL

## COMPATIBLE HEADRAIL



**Aluminum Headrail - White**

**0-112-04-01000**

**Length: 16'**

\*All measurements are reflected in millimeters.